



## Wavestore EVIS – Demo Setup

The Wavestore EVIS software suite is an application framework to manage a wide range of security sensing and monitoring systems integrated with the Wavestore DVR. In addition to the abilities to display maps and interactive icons, EVIS will display megapixel cameras in full resolution and support a zoom capability.

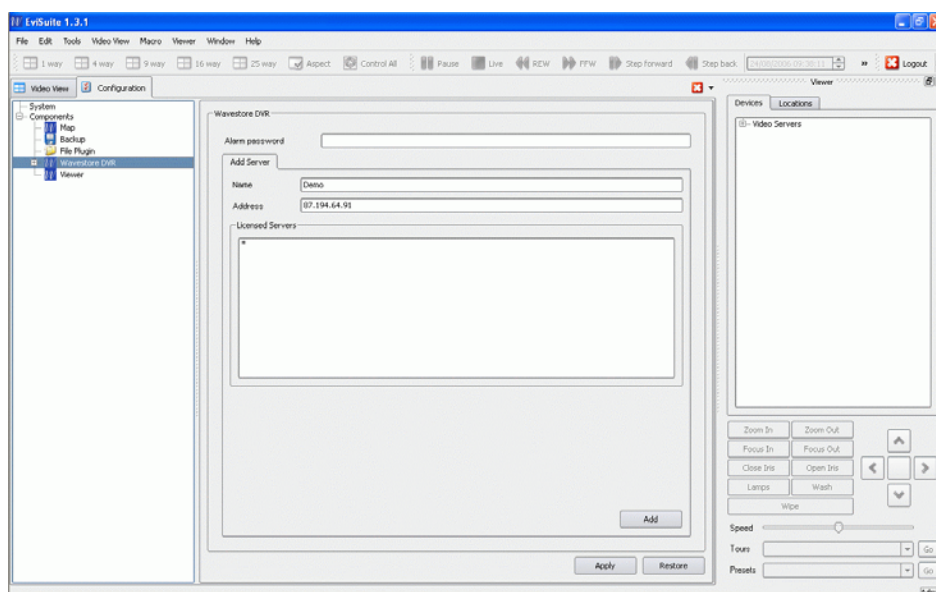
Details of EVIS can be found at <http://www.wavestore.com/evis.html#pixel>

Here are the instructions for setting up the EVIS evaluation software:

Go to <http://www.allbabel.com/evisuited.html> and download the latest version of the EVI Suite software. Once downloaded, run the installer program and follow the instructions.

Once installed, the EVIS application will be launched. Log in using the username "admin" and password "admin". Firstly, you may want to close the "Alarm", "Action" and "Map" panels on the left-side of the screen to make some room. If you have a high-resolution screen it may not be necessary, but on a low-resolution screen you might find it difficult to see all the details on-screen. (You can get these panels back later by selecting them in the Tools menu).

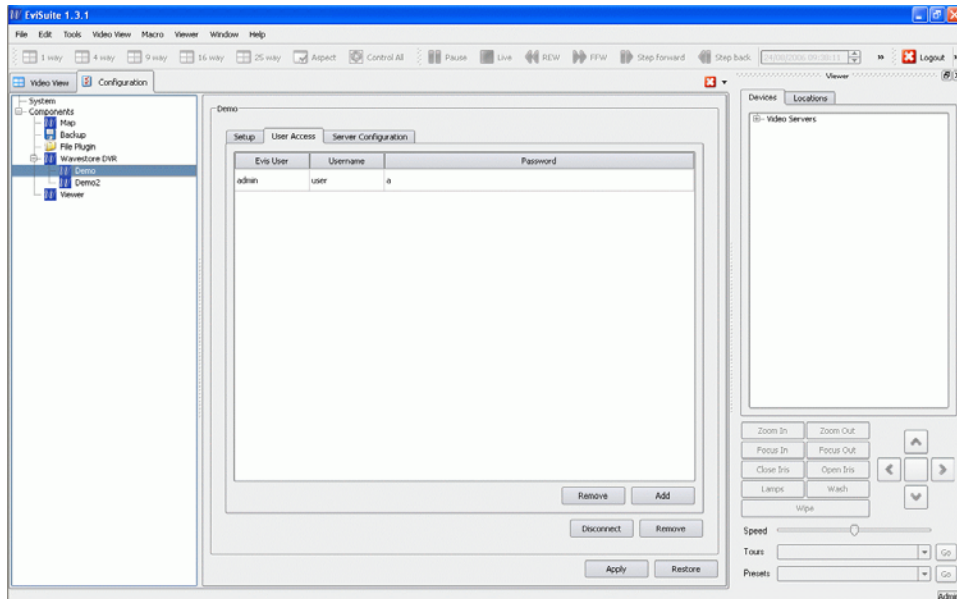
The next thing we need to do is to configure the Wavestore login details. For this demo, we will connect to the online demo Wavestore at the Wavelet Technology offices. Click "Configuration" to open the configuration panel, and then click Wavestore DVR in the left pane. In the box labelled "Address", enter the following IP address: **87.194.64.91**



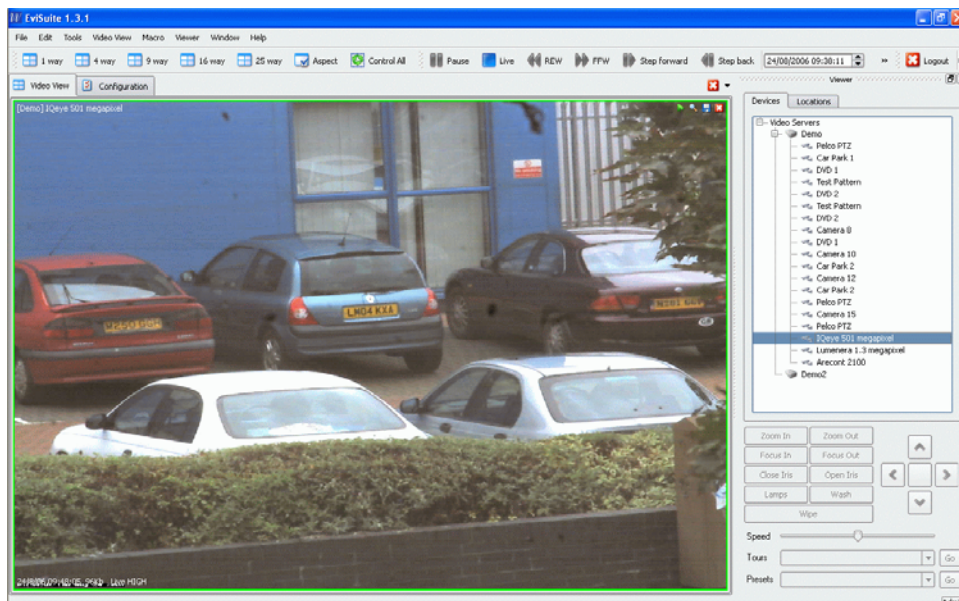
Then enter a name in the Name box above the IP address and click Add at the bottom of the screen. The name that you entered will appear in the pane on the left of the screen. Click this name to view more details of the Wavestore server. We now need to configure the login details for this Wavestore.



Firstly, click Add, then in the box underneath "Evis User" double-click so that the username "Admin" is shown. Under "Username" enter "user" and under "Password" enter "a". Finally, click "Apply" at the bottom of the screen and you will now be connected to the Wavestore.



To begin viewing video, click the plus (+) symbol next to the server name, under "Video Servers" on the right of the screen to show a camera list. Then just double-click a camera to display it.



(The zoom feature icon is at the top right of the screen). Simply click the icon and then "draw" the area of the display that you want to zoom onto.

[info@wavestore.com](mailto:info@wavestore.com)  
[www.wavestore.com](http://www.wavestore.com)  
+44 (0)20 8756 5456