

Application Software

Product Code: L-SW400

Description: Q-ie

Q Integrated Edition is an access control system comprising of both hardware and software.

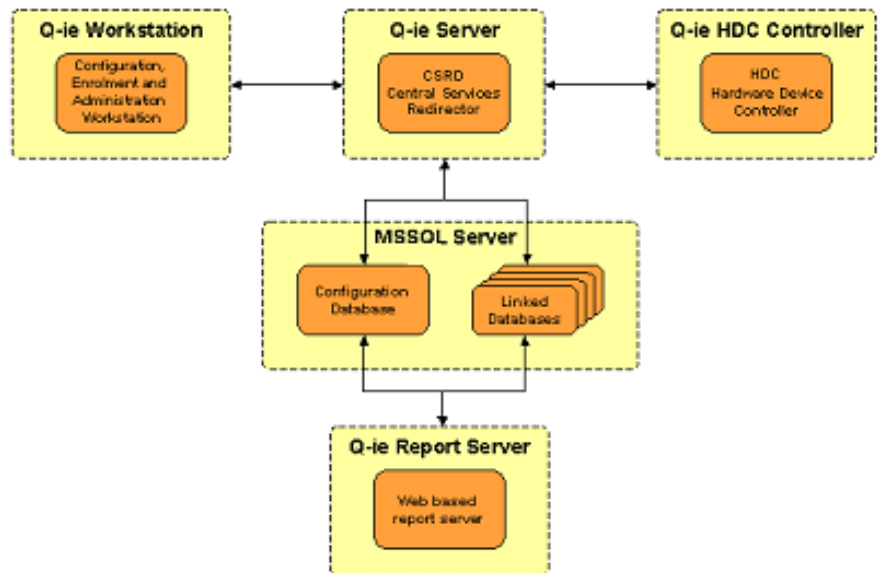
Hardware

Q-ie was designed to support the Syclon panel current loop architecture, which can support up to 56 26-bit Wiegand readers per loop. See *Syclon Panel User Manual* for further information concerning the configuration of the Syclon panel hardware.

Software

The software consist of 5 components namely:

- Q-ie Server or CSRD (Central Services Redirector)
- Q-ie Workstation
- HDC Controller
- Q-ie Web based Report Server
- Database



Q-ie server

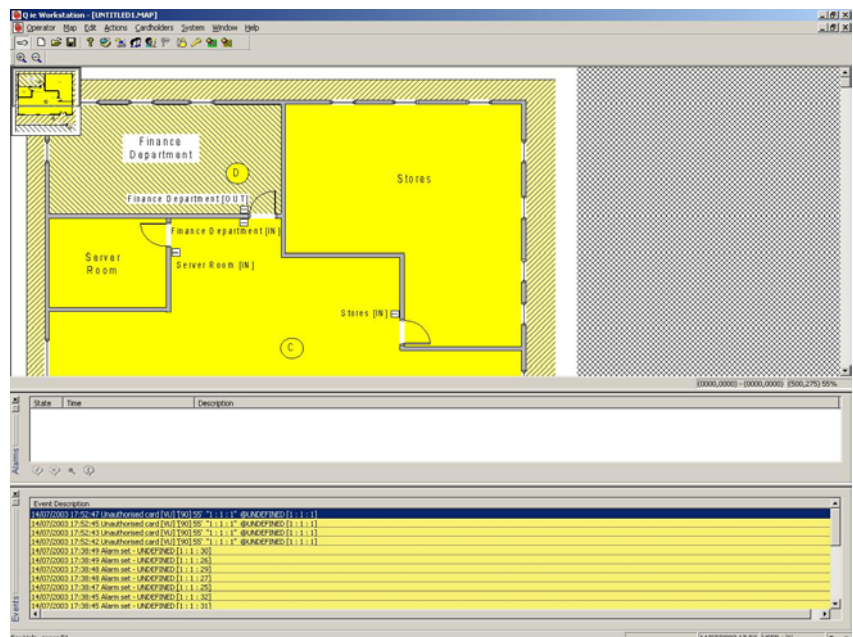
The function of the Q-ie server is to:

- Store the configuration in the database.
- Send events to workstations and log them in the database.
- Communicate with the HDC Controllers and update them with the latest configuration changes.

Q-ie Workstation

The Q-ie Workstation is used to:

- Administer system
- Run reports
- Enrolment of cardholders
- Operator interaction
- View Maps, Events and System Alarms



HDC Controller

The Hardware Device Controller (HDC) communicates with the Syclon Panels and buffers all transactions before sending them to the CSRD. As all system configuration information is also stored in a local database the HDC does not rely on a network connection to the CSRD server to operate.

Web based Report Server

The Web based report server generates the Crystal Reports® requested by the operator and displays them in a HTML interface within Q-ie. This allows any computer on the same network to view a report using a web browser. Access to the reports does however require a password to prevent misuse.

Database

All of the system configuration as well as all card transactions and operator actions are stored in the database.

Q-ie was designed to be compatible with both Microsoft® SQL Server™ 2000 and Microsoft® SQL Server™ 7.0. The Microsoft® Data Access Components (MDAC) 2.6 SP 1 must be installed on the Q-ie Server (CSRD) and workstations to ensure communication with the Microsoft® SQL Server™. The Q-ie installation wizards will ensure that the correct version of MADC is installed.

The Q-ie installation wizard includes a copy of the Microsoft® SQL Server™ 2000 Desktop Edition, which can be used for sites with up to 1000 cardholders. (See the Q-ie Installation Manual)

Features

The Q-ie System includes the following features, which are discussed in the System Administrators manual:

- User level permissions – operators required to logon to system
- Automatic operator Logon time out
- Resizable Event and Alarm Windows
- Timed Events
- Input/Output mapping
- Interactive maps with Scripting
- Customisable Alarms triggered by system events
- Escorted Access
- 3 Passback levels
- Customisable reports using Crystal reports
- 4 Different card types are supported each with it's own customisable linked database, including image capture.
- Operator hardware override from workstation
- HDC Level Scripting
- Distributed intelligence – HDC makes all decisions
- 3rd Party integration on 3 levels:
- Wiegand interface on Syclon panels
- Event exporting
- External verification
- Both the CSRD and HDC Servers run as NT Services

Additional Modules

VisiLog

VisiLog is a module of Q-ie designed specifically for the enrolment of visitors at the reception of a facility.

VisiLog has the following features:

- User level permissions – operators required to logon to system
- Automatic operator logon time out
- Visitor information fields are configurable

- A picture of the visitor can also be captured
- Visitor information can be pre-entered prior to arrival or entered upon arrival. Visitor information from a previous visit can also be used.
- Visitor card is automatically disabled when visitor badges at the last reader
- Visitor reporting is accessed through the Q-ie Report Server interface.

Minimum System Requirements

The operating system requirements are dependent on the features that will be installed.

Hardware Requirements

Hardware requirements of the Q-ie Server greatly depend on the size of the system. The following server specifications should be used as a guide only.

The below hardware specifications assume that:

- The site has approximately 1000 cardholders and 32 readers.
- Microsoft SQL Server Desktop Edition (MSDE) has been installed rather than MSSQL Standard Edition.
- The HDC Controller and Report Server are also installed on the Q-ie Server computer.

Server Specification

- Windows 2000 Professional
- Pentium III 500MHz
- 128MB Ram
- 20GB hard drive (to allow enough space for database growth, database backups and Journal files)
- 8MB video adapter
- 15" monitor (17" monitor when maps are to be used)
- Mouse and keyboard
- CD-ROM
- CD-RW or other system to allow system backups to be created that can be stored off-site.

Workstation Specifications

The Q-ie Workstation hardware requirements are not dependent on the size of the site. The minimum suggested workstation hardware specifications are as follows:

- Windows 2000 Professional
- Pentium II 400MHz
- 96MB RAM
- 100MB free hard drive space
- 8MB video adapter
- 15" monitor (17" monitor when maps are to be used)
- Mouse and keyboard
- CD-ROM (only required for the installation of the software)

Wavetrend (Pty) Ltd.
Wavetrend House
Hammets Crossing Office Park
Selbourne Rd
Fourways
Johannesburg
South Africa
Tel +27(11)462-2633
Fax +27(11)462-6316



Wavetrend Inc.
13912 NE 31st Place
Bellevue
USA

Tel +1-206-949-6394

sales@wavetrend.net

Wavetrend UK Ltd.
1st Floor, 7 Mallard Court,
Mallard Way, Crewe Business Park, Crewe,
Cheshire
England
CW1 6ZQ

Tel +44-1270-214-433
Fax +44-1270-214-420

