

IB8381/81-E

Bullet Network Camera



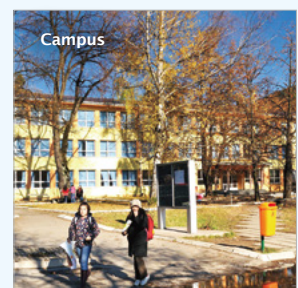
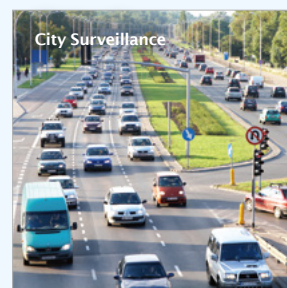
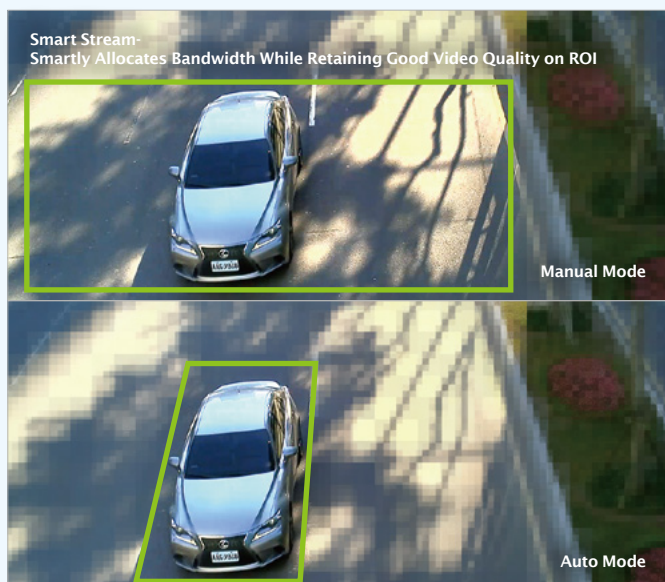
5MP · 30M IR · Smart Focus System · IP67 · Cable Management · Extreme Weather Support with PoE

VIVOTEK IB8381/81-E is a brand-new professional outdoor bullet network camera offering up to 25 fps @ 5-Megapixel or 30 fps @ 1080p resolution with superb image quality. Equipped with new image technology, IB8381/81-E provides the excellent image quality and finer detail than ever before. The powerful 3D Noise Reduction technology and Smart Stream technology enables the IB8381/81-E to optimize resolution on a desired object or area to maximize efficiency of bandwidth usage.

The IP67-rated housing is also designed to ensure the camera body withstands rain and dust and guarantees smooth operation under a multitude of harsh weather conditions. Additionally, the wide operating temperature range further enhances the IB8381-E's performance and reliability in extremely cold and warm weather even with PoE.

Key Features

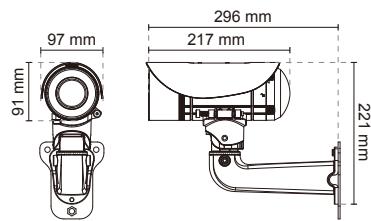
- 5-Megapixel CMOS Sensor
- 25 fps @ 2560x1920 (5MP)
- 3 ~ 9 mm Vari-focal, P-iris, Remote Focus Lens
- Removable IR-cut Filter for Day & Night Function
- Built-in IR Illuminators, Effective up to 30 Meters
- Real-time H.264, and MJPEG Compression
- Two-way Audio
- WDR Enhancement for Unparalleled Visibility in Extremely Bright and Dark Environments
- Smart Focus System for Remote and Precise Focus Adjustment
- Weather-proof IP67-rated Housing
- Built-in 802.3at Compliant PoE
- Built-in SD/SDHC/SDXC Card Slot for On-board Storage
- Mounting Bracket with Cable Management for Protected Installation
- Extreme Weather Support with PoE (IB8381-E)
- Smart IR Technology to Avoid Overexposure



Technical Specifications

Model	IB8381 IB8381-E	Alarm and Event
System Information		Alarm Triggers
CPU	Multimedia SoC (System-on-Chip)	Video motion detection, manual trigger, digital input, periodical trigger, system boot, recording notification, camera tampering detection, audio detection
Flash	256 MB	Alarm Events
RAM	512 MB	Event notification using digital output, HTTP, SMTP, FTP and NAS server, SD Card File upload via HTTP, SMTP, FTP, NAS server and SD card
Camera Features		General
Image Sensor	1/3.2" Progressive CMOS	Smart Focus System
Maximum Resolution	2560x1920	Remote focus
Lens Type	Vari-focal	Connectors
Focal Length	f = 3~ 9 mm	RJ-45 cable connector for Network/PoE connection Audio input Audio output AC 24V power input DC 12V power input Digital input*1 Digital output*1 Analog video output
Aperture	F1.2 ~ F2.3	LED Indicator
Auto-iris	P-iris	System power and status indicator
Field of View	31° ~ 67° (Horizontal) 24° ~ 50° (Vertical) 40° ~ 90° (Diagonal)	Power Input
Shutter Time	1/5 sec. to 1/32,000 sec.	24V AC 12V DC IEEE 802.3at PoE
WDR Technology	WDR Enhanced	Power Consumption
Day/Night	Removable IR-cut filter for day & night function	IB8381 Max. 10.86W (DC 12V) Max. 12.13W (AC 24V) Max. 12.36W (PoE) IB8381-E Max. 22.4W (DC 12V) Max. 24.6W (AC 24V) Max. 23.46W (PoE)
Minimum Illumination	0.22 Lux @ F1.2 (Color) 0.001 Lux @ F1.2 (B/W)	Dimensions
Pan/tilt/zoom Functionalities	ePTZ: 48x digital zoom (4x on IE plug-in, 12x built in)	Ø: 91 mm x 221 mm
IR Illuminators	Built-in IR illuminators, effective up to 30 meters with Smart IR	Weight
On-board Storage	SD/SDHC/SDXC card slot	Net: 1348g
Video		Casing
Compression	H.264, MJPEG	Weather-proof IP67-rated housing
Maximum Frame Rate	H.264: 25 fps at 2560x1920 30 fps at 1920x1080 MJPEG: 25 fps at 2560x1920 30 fps at 1920x1080	Safety Certifications
Maximum Streams	3 simultaneous streams	CE, LVD, FCC Class A, VCCI, C-Tick, UL
S/N Ratio	Above 53 dB	Operating Temperature
Dynamic Range	69 dB	IB8381: Starting Temperature: -10°C ~ 50°C (14°F ~ 122°F) Working Temperature: -20°C ~ 50°C (-4°F ~ 122°F) IB8381-E: Starting Temperature: -40°C ~ 50°C (-40°F ~ 122°F) Working Temperature: -50°C ~ 50°C (-58°F ~ 122°F)
Video Streaming	Adjustable resolution, quality and bitrate	Warranty
Image Settings	Adjustable image size, quality and bit rate, Time stamp, text overlay, flip & mirror, Configurable brightness, contrast, saturation, sharpness, white balance, exposure control, gain, backlight compensation, privacy masks, Scheduled profile settings, Seamless recording, smart stream, 3D Noise Reduction	36 months
Audio		System Requirements
Audio Capability	Audio input /output (full duplex)	Operating System
Compression	AAC, G.711, G.726	Microsoft Windows 7/8/Vista/XP/2000
Interface	External microphone input Audio output	Web Browser
Network		Mozilla Firefox 7~10 (Streaming only) Internet Explorer 7.x, 8.x, 9.x, 10.x, 11.x
Users	Live viewing for up to 10 clients	Other Players
Protocols	IPv4, IPv6, TCP/IP, HTTP, HTTPS, UPnP, RTSP/RTP/RTCP, IGMP, SMTP, FTP, DHCP, NTP, DNS, DDNS, PPPoE, CoS, QoS, SNMP, 802.1X, UDP, ICMP	VLC: 1.1.11 or above Quicktime: 7 or above
Interface	10Base-T/100 BaseTX Ethernet (RJ-45)	Included Accessories
ONVIF	Supported, specification available at www.onvif.org	CD
Intelligent Video		User's manual, quick installation guide, Installation Wizard 2, ST7501 32-channel recording software
Video Motion Detection	Triple-window video motion detection	Others
		Quick installation guide, warranty card, sun shield, wall mount bracket, waterproof RJ45 Ethernet enclosure, alignment sticker / desiccant bag, waterproof connector, screw

Dimensions



Compatible Accessories

Mounting Kits



AM-311
Pole Mount
Adaptor



AM-411
Corner Mount
Adaptor



AM-711
Junction Box

All specifications are subject to change without notice. Copyright © VIVOTEK INC. All rights reserved.

Distributed by:



VIVOTEK INC.
6F, No.192, Lien-Cheng Rd., Chung-Ho,
New Taipei City, 235, Taiwan, R.O.C.
T: +886-2-82455282 F: +886-2-82455532
E: sales@vivotek.com

VIVOTEK USA
2050 Ringwood Avenue,
San Jose, CA 95131
T: 408-773-8686 F: 408-773-8298
E: salesusa@vivotek.com

VIVOTEK Europe
Randstad 22-133, 1316BW Almere,
The Netherlands
T: +31(0)36-5298-434
E: saleseurope@vivotek.com

Ver 1.9