

VPD300WD

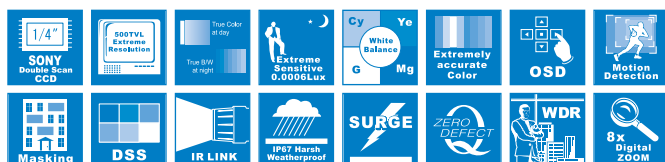
Wide Dynamic, 30x Zoom Speed Dome Camera

Product Information

VPD300WD is a high performance Turbo Speed Dome camera. Enhanced with a perfect mechanism and latest technologies, the camera delivers a superior Auto Focus control under the free angle PTZ in operation, accurate movement and stop after the long term use of preset touring and high speed zoom and focus for capturing moving objects.

Newly developed super DSP built-in, high performance 30x optical zoom module, enables the camera to have many unique and superior functions, such as higher than 520TVL resolution, absolutely best sensitivity of 0.003Lux in color mode, 126 x Super WDR etc.

Built-in ICR(Infra-red Cut filter Removable) makes the unit sensitive to IR combined surveillance for viewing long distance at total darkness and to deliver a noiseless B/W image with increased 570TVL. In daytime the image displays as purely natural color.



Key Features

- 1/4" SONY Super HAD Color CCD
- True Day/Night
- Extremely high sensitivity of 0.003Lux in color mode
- Dynamic Noise Reduction (DNR)
- Optical 30x Zoom (3.3mm~99mm)
- 360°endless rotation. (Max. 200°/sec)
- 128x Presets and versatile auto functions
- 126x WDR
- Digital 8x Zoom
- Digital Flip Over
- 8x Privacy zones
- Sensor 4x Inputs /2x outputs
- RS485(PELCO-D,P)
- Intelligent and Precise Mechanism

Dynamic and precise AF control

The camera can trace and pick up the object moving away fast from the scene with powerful 240 times zoom and greatly improved Auto Focus control.



Removable Motorized IR Cut Filter (ICR) Viewable at total darkness !

The image at daytime displays as True Color with IR Cut filter attached and turns to clear B/W (color signal removed) mode at night (True Day/Night). With ICR, it comes to IR sensitive that enables the camera to view the scene at total darkness.



Normal PTZ.
No IR sensitive.

VPD300WD
Image captured at total
darkness under IR illumination.

Super Wide Dynamic (sWDR)

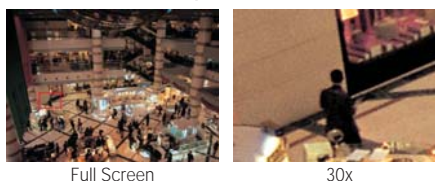
With new powerful DSP system integrated, it makes 126 times upgraded backlight compensation than that of existing BLC system.



High resolution of 520TVL

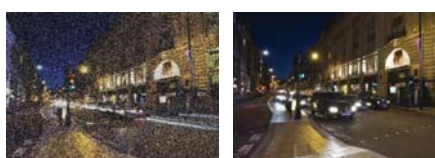


Powerful 30x optical zoom



Extremely upgraded sensitivity of 0.0006 Lux

Clearly different from conventional PTZ, this dome, with built-in Super DSP system can see the object very clear at even a starless dark night. In addition the built-in Dynamic Noise Reduction (DNR) removes noises and ghost effect to have the picture quality greatly improved. It also saves the DVR's recording capacity up to 70%.



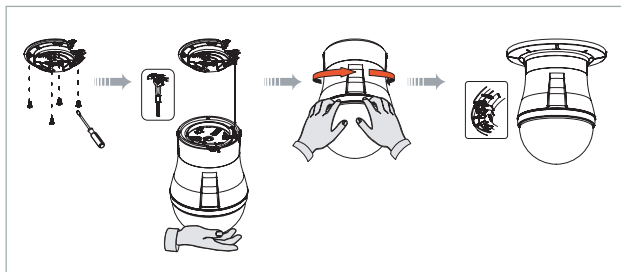
Normal PTZ.
Noisy and dragging

VPD300WD
Noise and ghost removed

VPD300WD | Wide Dynamic, 30x Zoom Speed Dome Camera

Quick and Easy installation

Dome base is separated and easily mounted on the ceiling first and the main body is simply hooked on it with no tool by hand. Complicated cable connection is not additionally required with the built-in one-stop connection mechanism.

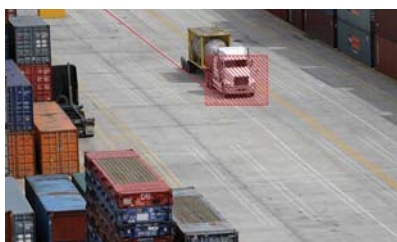


Improved picture blindness problem

Problem in the conventional Dome that is to be out of control for blind detection after long time use is clearly solved with perfect mechanical protection from the design stage.

Compatible to iNVR (VPR100)

Based on the reliability, Precise PTZ touring and speedy AF performance, it is perfectly compatible to the intelligent analytics NVR system of Visionhitech.



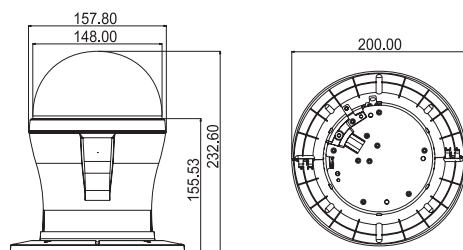
Video Content Analytics



Detected Object is traced and zoomed by PTZ.

MODEL	VPD300WD
Image sensor	1/4" Color Super HAD CCD, 410,000 pixels
Effective Pixels	NTSC : 768(H) x 494(V) PAL : 752(H) x 582(V)
H.Resolution	NTSC : 520 TV Lines (Day) / 570 TV Lines (Night) PAL : 500 TV Lines (Day) / 550 TV Lines (Night)
Synchronizing system	Internal
Scanning system	NTSC 525 Lines PAL 625 Lines 2:1 Interlaced
Video output	1.0Vp-p Composite. 75 Ohms
S/N ratio	More than 50 dB (AGC Off)
Min. Illumination	0.003Lux at F1.6 (Color), 0.0006Lux at F1.6 (B/W)
OSD	On / Off
Digital zoom	On / Off (2X, 4X, 8X)
S/N Ratio	50dB (AGC off, Weight on)
Day & Night	Color / B/W / Auto (ICR filter change)
Back Light Compensation	Normal /BLC /WDR (52dB)
Shutter Speed	Auto/Manual (NTSC: 1/60 ~ 1/120,000) (PAL : 1/50 ~ 1/120,000)
White Balance	AWC /Manual /ATW(1,800°K~10,500°K)
Gain Control	Low /Middle /High /Off
Sens-up	ON / OFF (2X~128X)
SSNR	Low /Middle /High /Off
Privacy	On / Off (8 programmable zones)
Preset	128 points
Digital Flip	On / Off
Focus control	Auto / Manual / One push
Iris control	Auto/Manual
Motion detection	On / off (Built-in alarm output connector)
Protocol	RS-485(Pelco-D, P)
Power source	12VDC or 12VDC/24VAC Dual Power
Operating current	20W Max.
Lens	Auto Focus Digital zoom
Zoom ratio	30X, f3.3~99mm (F1.6)
Angle of view	H: 51.26°(Wide) ~ 2.39°(Tele) V: 39.03°(Wide) ~ 1.80°(Tele)
Aperture ratio	F.1.6 ~ F.3.7
Pan/Tilt angle	Pan: 360° (200° /sec) / Tilt: -4° ~ 184° (200° /sec)
Operating Temperature	14°F ~ 122°F (-10°C ~ +50°C)
Humidity	Within 90% RH
Measurement (mm)	157(Ø) x 232(H)
Weight (Approx.g)	2200

Dimension



ACCESSORY

Indoor Wall mount



VHB-300WI

Pendant mount



VHM-300PM

Coner mount



VHM-300COR

Pole mount



VHM-300PO

Parapet mount



VHM-300PAR