



Visionhitech Americas Inc.  
A Division of Visionhitech Co, LTD

IP  
cameras



Visionhitech is proud to offer a complete line of megapixel and D1 resolution IP cameras to cover any networked surveillance application. Choose from standard, armor dome, bullet and PTZ dome configurations to fit your environment. Selectable H.264/MJPEG compression and Dual Stream allows simultaneous transmission of different resolutions to a live viewer and NVR. 2 way audio is supported, allowing remote audio monitoring and talkback. PoE and 12VDC power sources provide flexible installation options.

### Dual Stream



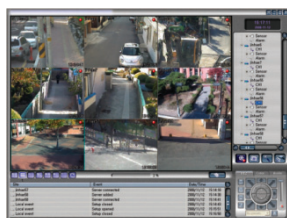
H.264 & MJPEG codecs allow you to select the best compression for the job. Dual Streaming allows simultaneous transmission of high rez images to NVR, and high frame rate video for live viewing. Supports full D1 720x480 pixel resolution @ 30fps.

### D1 and Megapixel Resolution



Available in standard 720x480 pixel resolution at full D1 30fps. For high definition, use the 1.3 megapixel system which provides nearly 4 times the resolution compared to D1.

### Connectivity Options



Central Monitoring Software (CMS)



Search View

eMap

Connect to the IP camera via Web browser, 3rd party VMS or included Central monitoring software. CMS offers real time A-V monitoring with connections to video servers and multiple IP cameras. Record, playback, monitor events/alarms and control PTZ functions remotely.



## Network Features

- TCP/IP 10/100 BaseT Interface
- H.264/MJPEG codecs
- Dual Streaming
- PoE or 12VDC power
- Full Duplex, 2 way audio
- Connect via Browser or included CMS Software

## IP/Network

Network Protocols	TCP/IP, DHCP, HTTP, UDP, FTP, SMTP, RTP, TRSP,
iP Support	Dynamic and Static IP
System Requirements	Pentium CPU 1.2Ghz (or equivalent) or higher, Graphics Card w/ 32MB RAM, Windows XP / 2000 / Vista / 7 and system RAM as recommended for OS

## Megapixel IP Cameras

### Common Specs

- 1/3" Sony 1.3M CMOS
- 1280x1024 Pixels @ 25fps
- 2DNR Noise Reduction
- Megapixel quality lenses (Optional on Box cameras)

Feature	 VC58M-IP	 VDA110M-IP VDA110MIR-IP	 VN70IIM-IP	 VPD180M-IP
Type	Box	Outdoor Dome IP66	Outdoor Bullet IP66	Indoor Autopan Dome
Lens	CS Mount, Optional	3-9mm VF CS Mount	3-9mm VF	3-9mm VF
Min. Illumination, IR Beam Distance	0.2 Lux Color, 0.001 lux B/W	0.2 Lux Color, 0.001 lux B/W (VDA110M-IP); 0.2 Lux Color, 0 Lux B/W, 98' (VDA110MIR-IP)	0.2 Lux Color, 0 Lux B/W, 164'	0.1 Lux Color, 0.3 Lux B/W
SD Card Slot	Yes	No	No	Yes
Special Features				4 integrated PIR & Autopanning

## WideLux IP Cameras

### Common Specs




- 1/3" Sony Super HAD CCD II
- WideLux chipset
- 720x480 Pixels @ 30fps
- Super Wide Dynamic Range
- 2D+3DNR Noise Reduction
- 0.1 Lux, 0.0001 Lux (Sens-up)
- Digital Image Stabilizer
- Anti Color Rolling
- Intelligent IR Control (IR versions only)

Feature	 VC58S-IP	 VDA110S-IP VDA110SIR-IP	 VD101S-IP	 VN70IIS-IP
Type	Box	Outdoor Dome IP66	Indoor Dome	Outdoor Bullet IP66
Lens	CS Mount, Optional	2.8-12mm VF DC Iris	2.8-12mm VF DC Iris	2.8-12mm or 5-50mm VF DC Iris
IR Beam Distance	N/A	98' (VDA110SIR-IP)	N/A	164'
SD Card Slot	Yes	No	No	No

## Night Vision & PTZ IP Cameras

### Common Specs

- 720x480 Pixels @ 30fps

Feature	 VA102E-VL60-IP	 VA332WD-VL60-IP, VA372WD-VL60-IP	 Indoor Outdoor VPD330WD-IP, VPD370WD-IP
Type	Super Night Vision	Super Night Vision w/ Optical Zoom	PTZ Dome
Versions Available	Outdoor IP67	Outdoor IP66	Indoor or Outdoor IP66
Lens	7.5-50mm VF DC Iris	33x or 37x Optical Zoom	33x or 37x Optical Zoom
Min. Illumination	0.2 Lux, 0.0001 lux (DSS on)	0 lux, IR on	0.7 Lux, 0.002 lux (Sens Up)
IR Beam Distance	394'	394'	N/A
WDR	Yes	Yes	Yes
DNR	2D+3DNR	2D+3DNR	2D+3DNR

Note: Specifications are subject to change without prior notice.

[www.vhtamericas.com](http://www.vhtamericas.com)

Toll Free (US): 1 877 218 6599 | Int'l: 1 949 660 1412 | [info@vhtamericas.com](mailto:info@vhtamericas.com)