

VD80/90/100/120 Standard Dome camera

Product Information

The essential priority of our Standard Color Dome cameras is in their supreme picture quality which is very unique and distinct. It fulfills an ultra clear and distinct picture quality than ever conventional dome camera and maximizes the value of what the security camera is for.

The dome with built in Super HAD CCD chip technology realizes the best sensitive low light performance featuring 0.3 Lux/F2.0.

Making the dome curvature with pure transparency and with undistorted image production is our positive preference. The crystal clear Dome window is made of polycarbonate to protect the camera from even a violent attack on it. The unit is supported with a variety of optical solutions in order to cover a dynamic range of applications with a different viewable distance at any different angle of view.



VD80CSHR



VDA90CSHR



VD100CSHR



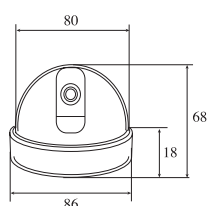
VD120CSHR



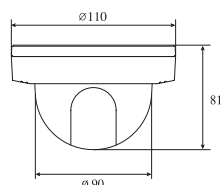
Key Features

- Automatic image conversion from Color to B/W
- Extremely Higher resolution
 - 560TVL(Day) to 600TVL(Night)- High resolution : HQ Version
 - 500TVL(Day) to 560TVL(Night)- High resolution
- Extremely accurate color reproduction (with 10bit A/D process)
- DIP SW functions
 - ESC/ALC, BLC on/off, AGC Nor/Max, AWB ATW/Push Lock
- 1/3" Super HAD/EX-View HAD Color CCD sensor (Sony)
- Surge power input protection built-in
- Poly carbonate clear cover • Optically correct clear window
- 12VDC • Very easy to install • Compact and Beautiful
- Easy access to Dip SW for function adjustment

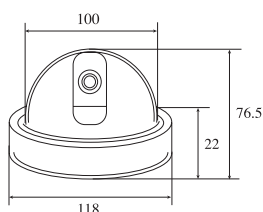
Dimension



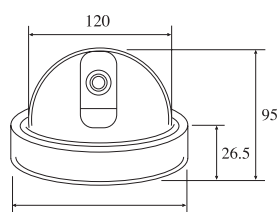
VD80CSHR



VDA90CSHR



VD100CSHR



VD120CSHR

MODEL	VD80CSHR / VDA90CSHR / VD100CSHR / VD120CSHR
Image sensor	1/3" DSP Color Sony Super HADCCD
Effective Pixels	Med-Res - NTSC : 512(H)X492(V) PAL : 500(H)X582(V) High-Res - NTSC : 768(H)X494(V) PAL : 752(H)X582(V)
H.Resolution	400TVL(Med-Res)/500TVL(High-Res)
Synchronizing system	Internal
Scanning system	NTSC 525 Lines PAL 625 Lines 2:1 Interlaced
Video output	1.0Vp-p Composite. 75 Ohms
S/N ratio	More than 50 dB (AGC Off)
Min. Illumination	0.3 Lux at F2.0
BLC	Automatic
White balance	2100°K - 9100°K Auto
Gain Control	4dB-30dB Auto
Gamma correction	r=0.45
Smear effect	0.005%
Shutter speed	NTSC : 1/60 - 1/100,000 sec PAL : 1/50 - 1/100,000 sec
MTBF	80,000 hours
Power source	DC12V
Operation current	90mA w / regulated 12VDC in
Lens	Board lens : 3.6mm(92°) Board lens option : 2.5mm(145°), 2.9mm(120°), 4.3mm(78°), 6.0mm(54°), 8.0mm(39°), 12.0mm(26°), 16.0mm(19°) Varifocal Lens option(VDA90/VD120 Series) 4-9mm Varifocal Auto DC Iris lens 2.6-6mm Varifocal Auto DC Iris lens 9-22mm Varifocal Auto DC Iris lens
Operating Temperature	14°F ~ 122°F (-10°C ~ +50°C)
Humidity	Within 90% RH
Output Terminal	4 Feet DIY cable with BNC-Female for Video, DC Jack-Male for Power
Measurement (mm)	Refer to dimensions
Weight(Approx.g)	180/450/330/400
Optional Function 1	External Audio with C-Microphone " - 35dB / mV "
Optional Function 2	Infra-Red Light sensitive without losing the true coloration at day light
Optional Function 3	Reverse Image