

VA300 Super Night vision Outdoor AF Zoom camera

Product Information

VA300 is a WDR Auto Focus Zoom lens built-in day/night camera specially designed for the professional Day/Night surveillance. With the built-in 30X (f3.3~99mm) optical zoom lens and Digital 10X zoom function, the camera provides 300 times of zoom capability. The unit possesses a super bright sensitivity of 0.0007 Lux at color mode and a ICR built-in Day/Night mechanism, At daytime, the camera features a 520TVL Color image and at nighttime, the image is converted into real B/W mode (Color signal removed) resulting in the resolution and sensitivity greatly enhanced. The camera incorporates an Intelligent CDS control technology that triggers mechanical day/night filter accurately switched on and off with the image changed between Color and B/W at 5 lux outdoor darkness. With user friendly IR Link outputs, installers can easily connect the IR illuminators on the spot. Specially designed power circuit enables the camera to be installed on an existing UTP or telephone cable without affecting on the camera's Day/Night performance.



Key Features

- Digital Zoom Camera (Optical 30x plus Digital 10x)
- High performance 1/4" Sony Super HAD CCD
- High resolution of 520 TVL at Day/570 TVL at Night
- Greatly enhanced Sensitivity of 0.0007 Lux at F1.6
- IR Sensitive mechanical Day/Night filter system built-in (ICR)
- True Color at Day and Real B/W at Night conversion
- IR Connection 4P Din Jack (Left & Right) built-in
- Extended IR LEDs' life cycle and the sensitivity
- Accurate Day/Night perception • Side IR (850nm-8 Øx17° x6ea)
- RS-485 remote control (supports Pelco-D, SEC, Panasonic, Vicon)
- Mountable on the Ceiling, Wall, Slope, Table with 3-Axis mechanism.
- IP66 Weatherproof • Cable concealed thru bracket.
- Installation with existing telephone cable up to 100M long.
- Easy to use OSD menu control
 - Motion detection.
 - Camera ID
 - Sens-up (2x~128x)
 - Dynamic Noise Reduction (DNR)
 - Privacy masking

Intelligent IR Compensation

The image reflected from the IR lights becomes WHITE from the conventional IR cameras. Visionhitech's new IR Compensation technology analyzes the light saturation and automatically optimizes the level to the objects being recognizable.



Conventional IR Image

Self-compensated IR Image

High power IR LEDs built-in LED Lamp Interchangeable



30X Optical Auto Focus Zoom (f3.3mm ~ 99mm)

The unit incorporates f3.3mm ~ 99mm 30 x optical and 10x Digital AF zoom lens, Built-in ICR enables the unit to create clear image quality for 24 hours Day & Night. With OSD menu control, the user can capture the view of up to 300 times closer.



Normal optical view

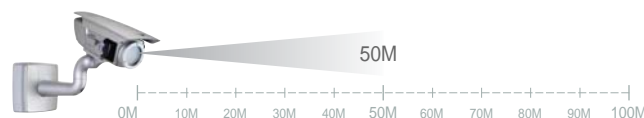


30 x optical zoom

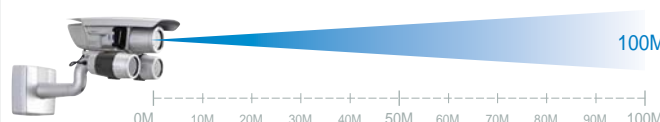
Powerful night sensitivity

This new night vision camera includes high impact infra-red LEDs as a standard capturing a clear and very bright image at pitch black '0' Lux darkness for up to 50 meter long distance.

<Standard>



<With IR Link in addition. Illuminator: VL60>



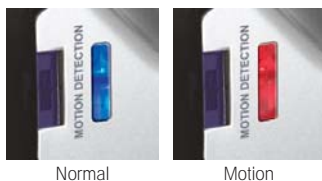
Extended IR LEDs' life cycle and the sensitivity

The VA300 adapts the Visionhitech's special IR life protection technology that extends the life cycle of IR LEDs at its maximum period of life span. Conventional IR cameras tend to produce a bright IR image at the beginning but the LEDs' performance is reduced day by day and finally burned to dead in short time period after the installation. Consequently the night vision performance of conventional cameras is seriously reduced within after several months of operation.

VA300 | Super Night vision Outdoor AF Zoom camera

Motion detection Lamp

When the camera detects a motion, the RED LED blinks in order to deter an intruder's attempts of a crime. BLUE LED is on in normal condition,



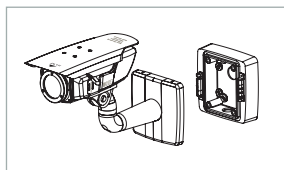
IP66 Weatherproof

The unit is duly passed IP66 international weatherproof standard, allowing the camera to be operated safely from even extremely harsh water storming weather condition.



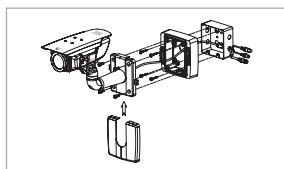
Detachable mounting base

The mounting base is separated and can be installed in advance.



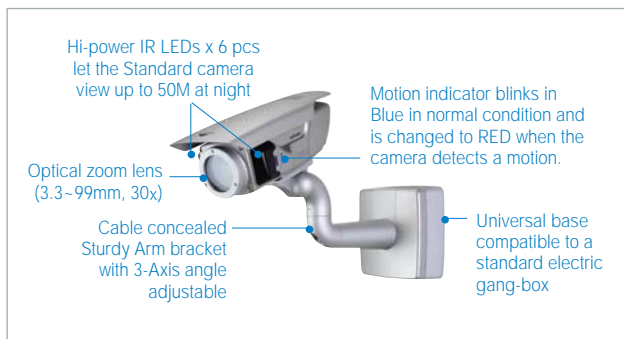
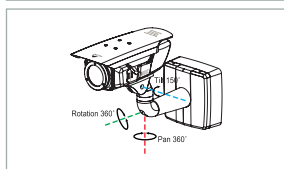
Compatible to an electric junction box.

The mounting base is compatible to the industry standard 2-gang junction box for an easy installation.



Triple axis mounting.

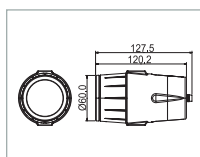
The unit can position the right angle of view from any of diverse locations like on the wall, Ceiling, Slope, Ground etc.



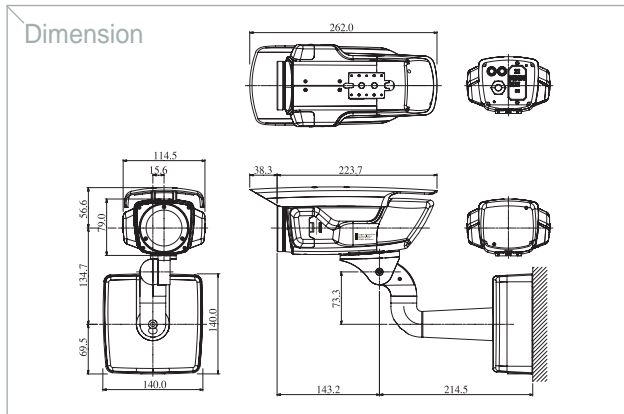
IR Link terminal



Optional IR Illuminator



Dimension



MODEL	VA300
Image sensor	STD : 1/4" Super HAD CCD
Effective Pixels	NTSC : 768(H) x 494(V) PAL : 752(H) x 582(V)
H.Resolution	NTSC : 520 TV Lines (at Day) / 570 TV Lines (at Night) PAL : 520 TV Lines (at Day) / 570 TV Lines (at Night)
Synchronizing system	Internal
Scanning system	NTSC 525 Lines PAL 625 Lines 2:1 Interlaced
Video output	1.0Vp-p Composite. 75 Ohms
S/N Ratio	50dB(AGC off)
Min.Illumination	0.0007 Lux at F1.6(Sens-up)

OSD Menu	
OSD menu	RS485 (DVR or Controller is available)
Digital zoom	On / Off (2X~8X)
S/N Ratio	50dB (AGC off, Weight on)
Day & Night	Color / B/W / Auto (ICR filter change)
Back Light Compensation	Low / Middle / High / Off
Shutter Speed	Auto / Manual (NTSC: 1/60 ~ 1/120,000 sec) (PAL: 1/50 ~ 1/120,000 sec)
White Balance	ATW / AWC / Manual
Gain Control	Low / Middle / High / Off
Sens-up	Auto (2X~128X) / Off
DNR	Low / Middle / High / Off
Privacy	On / Off (Max. 32 zones / 8 Prorammmable zones per screen)
Preset	8 positions
Flip	H-REV (On/Off) / V-REV (On/Off)
Focus control	Auto / Manual / One push
Iris control	Auto / Manual
Motion detection	On / Off
Communication	RS-485 (Pelco-D, SEC, Panasonic, Vicon)

POWER	
Power source	24VDC
Operating current	140mA(IR "Off" at Day) 360mA(IR "On" at Night)

LENS	
Lens	Auto Focus Digital zooms
Zoom ratio	30X, f3.3~99mm (F1.6)
Min. Focus distance	1.5M
Angle of view Lens initialization	Horizontal: Appr.58.0°(Wide) to 2.22°(Tele) Vertical: Appr.44.8°(Wide) to 1.68 °(Tele)
Digital Zoom	On / Off (2X~10X)

Operating	
Operating Temperature	14°F ~ 122°F (-10°C ~ +50°C)
Humidity	Within 90% RH
Weatherproof rating	IP66
Measurement (mm)	140(W) X 260(V) X 396(L)
Weight (Approx.g)	3000
Connection	Cable concealed through Bracket

IR Function	
IR Spectrum	High Power 850nm-17° (8Ø) x 6ea
Viewable distance	Up to 50M at moonless night
MTBF of IR	20,000 Hours

IR Option	
Addable IR Illuminator	VL60 (Option)
IR Spectrum	High Power 850nm-17° (8Ø) x 20ea
Viewable distance	Up to 100M at moonless night with VL60 x 2 sets in addition