

BRACKETS AND ADAPTERS FOR STAINLESS STEEL PRODUCTS

NXWBS1 WALL MOUNT

Made of AISI 316L electropolished stainless steel

Load rating: 45kg (99lb)

Dimensions: 371x186mm (14.6x7.3in)

Available modular components: NXCOL and NXCW

Unit weight: 2.5kg (5.5lb)



NXWBS1

NXWBL WALL BRACKET FOR NXL HOUSING

Made of AISI 316L electropolished stainless steel

Load rating: 45kg (99lb)

Length: 596mm (23.5in)

Available modular components: NXCOL and NXCW

Unit weight: 5.5kg (12.1lb)



NXWBL

NXWBPTH1 WALL BRACKET FOR NXPTH

Made of AISI 316L electropolished stainless steel

Load rating: 70kg (154lb)

Length: 596mm (23.5in)

Compatible with NXCOL, NXCW and NXFWBT modular components

Unit weight: 4.8kg (10.6lb)



NXWBPTH1

NXFWBT PARAPET MOUNTING BRACKET

Made of AISI 316L electropolished stainless steel

Load rating: 70kg (154lb)

Height: 124mm (4.9in)

Compatible with: NXWBPTH1 bracket

Unit weight: 0.9kg



NXFWBT

NXCOL POLE MOUNT ADAPTER

Made of AISI 316L electropolished stainless steel

For pole diameters Ø 110-150mm (4.3-5.9in)

Load rating: 50kg (110lb)

Dimensions: 180x196mm (7.0x7.7in)

Suitable for NXWBS1, NXWBL and NXWBPTH1 brackets

Unit weight: 3.3kg (7.3lb)



NXCOL

NXCW CORNER MOUNT ADAPTER

Made of AISI 316L electropolished stainless steel

Load rating: 50kg (110lb)

Dimensions: 180x291mm (7x11.5in)

Suitable for NXWBS1, NXWBL and NXWBPTH1 brackets

Unit weight: 1.2kg (2.6lb)



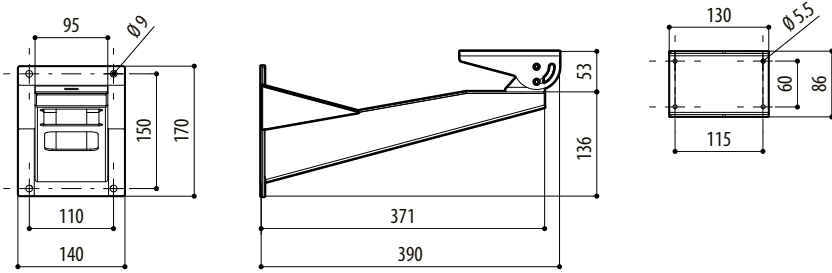
NXCW

| PACKAGE | | | |
|--------------|---------------|-------------------------------|---------------|
| Model Number | Weight | Dimensions (WxHxL) | Master carton |
| NXWBS1 | 2.8kg (6.2lb) | 16x18.5x46cm (6.3x7.3x18.1in) | 8 |
| NXWBL | 5.6kg | 19x16x60cm (7.5x6.3x23.6in) | - |
| NXWBPTH1 | 5kg/11lb | 18x60x15.5cm (7.1x23.6x6.1in) | 4 |
| NXFWBT | 1kg (2.2lb) | 10x16x23cm (3.9x6.3x9in) | - |
| NXCOL | 3.5kg (7.7lb) | 14x25.5x20cm (5.5x10x7.9in) | 8 |
| NXCW | 1.3kg (2.8lb) | 24x32x24.5cm (9.4x12.6x9.6in) | 5 |

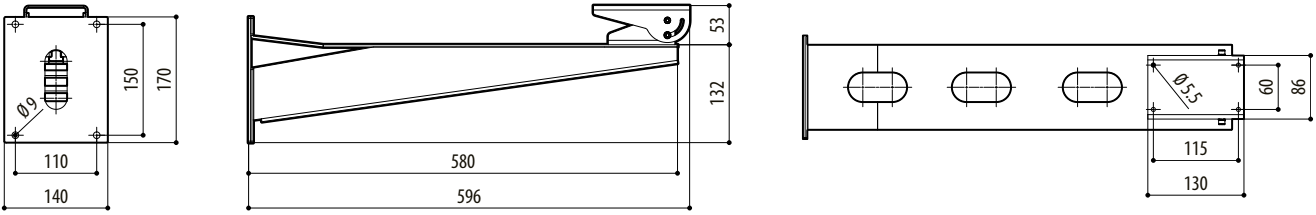
| COMPATIBILITY HOUSINGS/P&T/ADAPTERS/BRACKETS | | | | |
|--|--------|-------|----------|---------|
| | Wall | | | Parapet |
| | NXWBS1 | NXWBL | NXWBPTH1 | NXFWBT |
| Housings | | | | |
| NXM | ✓ | - | - | - |
| NTM | ✓ | - | - | - |
| NXL | - | ✓ | - | - |
| NTL | - | ✓ | - | - |
| NXW | ✓ | - | - | - |
| NTW | ✓ | - | - | - |
| P&T motors | | | | |
| NXPTH | - | - | ✓ | ✓ |
| Adapters | | | | |
| NXCW | ✓ | ✓ | ✓ | - |
| NXCOL | ✓ | ✓ | ✓ | - |

TECHNICAL DRAWINGS

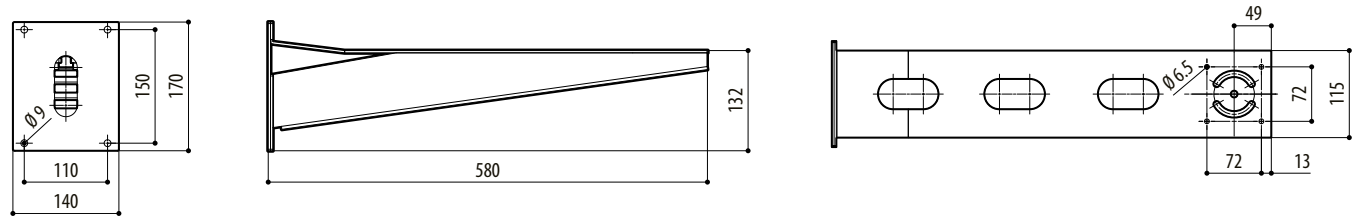
Sizes in millimeters.



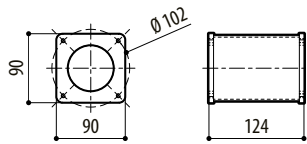
NXWBS1



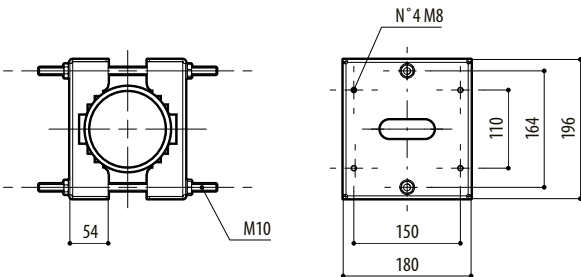
NXWBL



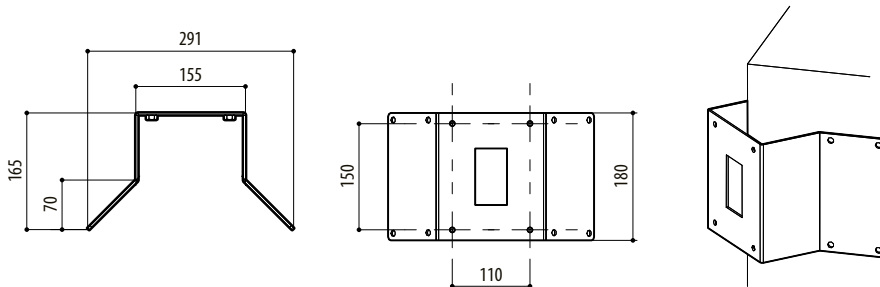
NXWBPTH1



NXFWBT



NXCOL



NXCW

