

### MAIN FEATURES

Indoor / Outdoor installations

Thick extruded aluminium and stainless steel armour plating

Max impact resistance (IK10)

Bullet proof glass (BR3)

Internal cable channel

Weatherproof standard IP54

### DESCRIPTION

Armoured housing, consisting of a 10mm thick extruded aluminium base with front and rear bottom constructed from 30mm thick aluminium. An 18mm-bullet-proof glass is fixed on the front by means of an iron frame. The armour plating is constructed from 3mm stainless sheet steel, which covers the base and housing body. The unit is completed with an aluminium sunshield.

Complete protection is ensured by the special joint bracket, constructed from aluminium, with internal cable channel for concealed power and video cables.

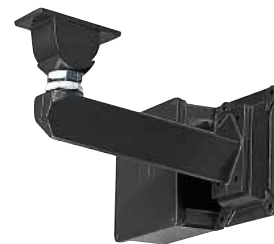
A nut and a lock nut allow the joint adjustment and locking. The bracket can be wall mounted by means of its reinforcing support plate.

Available accessories: sunshield, heater kit, optional blower kit and power supply.

The AVBPH housing has been designed for maximum security applications, like prisons, where there is the need of maximum protection against vandalism.



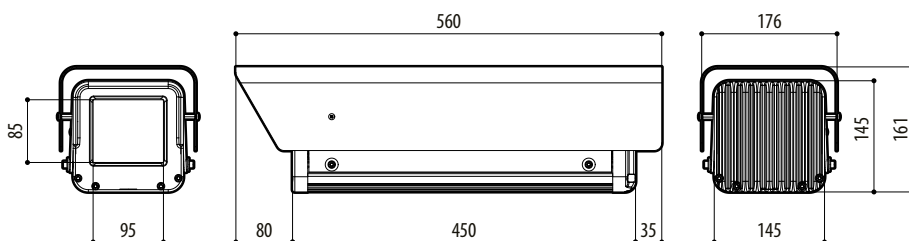
AVBPH1K



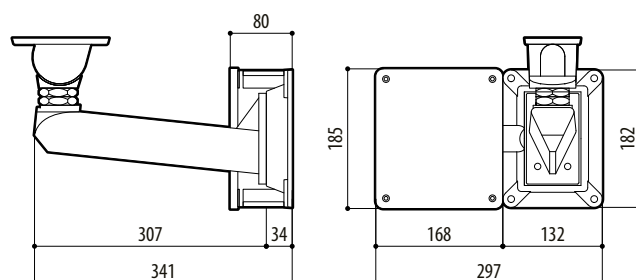
AVBPWB01B



AVBPH1K + AVBPWB01B



AVBPHK



AVBPWB01B

mm 1:10

## AVBPH

AVAILABLE MODELS				
Code	Sunshield	Heater 115/230Vac	Heater 12Vdc/24Vac	Max consumption
AVBPH1K000	•	•		40W
AVBPH2K000	•		•	20W

## TECHNICAL DATA

## GENERAL

## AVBPH

10mm (0.4in) thick extruded aluminium base

30mm (1.2in) thick aluminium front and rear bottom

Stainless steel window frame

Constructed from 3mm (0.1in) stainless steel sheet which covers the base and housing body

Epoxypolyester powder painting, grey colour

Aluminium sunshield epoxypolyester powder painted, RAL9002 colour

Supplied with instruction manual, desiccant bag, accessories for camera and lens mounting

## AVBPWBB

Aluminium

Epoxypolyester powder painting, grey colour

## MECHANICAL

## AVBPH

Bullet proof glass BR3 according EN1063

Window 18mm (0.7in) thick glass

Window dimensions 95x85mm (3.7x3.4in)

External dimensions with sunshield (WxHxL): 176x161x560mm (6.9x6.3x2in)

Internal usable dimensions (WxH): 122x100mm (4.8x3.9in)

Usable length without accessories

AVBPH 380mm (14.9in)

Usable length with heater and / or blower

AVBPH 330mm (13in)

Usable length with heater and power supply

AVBPH 310mm (12.2in)

## AVBPWBB

Internal cable management

Wall mounted coupled with counterplate

## ELECTRICAL

Heater Ton 15°C±3°C (59°F±5°F) Toff 22°C±3°C (71°F±5°F)

- IN 12Vdc/24Vac, consumption 20W max

- IN 115/230Vac, consumption 40W max

Blower kit with thermostat air filter, Ton 35°C±3°C (95°F±5°F) Toff 20°C±3°C (71°F±5°F)

- IN 12Vdc, consumption 4W max

- IN 24Vac, consumption 4W max

- IN 230Vac, consumption 4W max

Camera power supply

- IN 230Vac - OUT 12Vdc, 50/60Hz, 400mA

- IN 230Vac - OUT 24Vac, 50/60Hz, 400mA

## ENVIRONMENT

Indoor / Outdoor

Operating temperature with heater: -20°C / +60°C (-4°F / +140°F)

## CERTIFICATIONS

CE EN61000-6-3, EN60065, EN50130-4

IP54 EN60529 (IP44 with blower kit and air filter)

Impact resistance IK10 EN62262

BR3 according EN1063 for bullet proof glass

## ACCESSORIES

OAVBPHH1 Heater 115/230Vac

OAVBPHH2 Heater 12Vdc/24Vac

OAVBPHCF1 Blower kit with thermostat air filter IN 12Vdc

OAVBPHCF2 Blower kit with thermostat air filter IN 24Vac

OAVBPHCF3 Blower kit with thermostat air filter IN 230Vac

OHEPS24 Camera power supply IN 230Vac - OUT 12Vdc, 400mA

OHEPS25 Camera power supply IN 230Vac - OUT 24Vac, 400mA

## BRACKETS AND ADAPTORS

AVBPWBB Wall bracket with cable channel and wall bracket adapter

AVBPWB01B Wall bracket with cable channel wall bracket adapter and box

PACKAGE							
Code	Unit weight		Package weight		Package dimensions (WxHxL)		Master carton
	kg	lb	kg	lb	cm	in	unit
AVBPH1K	10.3	22.7	12.0	26.5	57.0x24.0x30.0	22.5x9.4x11.8	-
AVBPWBB	3.2	7.1	3.5	7.7	42.5x15.5x14.0	16.7x6.1x5.5	10