



### Features

- Full function PTZ speed dome
- Integrated high performance infra-red (IR) illumination
- 360° per second pan speed
- 0.02° resolution
- 0.02° per second minimum tracking rate
- Infra-red illumination turns on automatically and the camera switches to black & white mode at night-time
- Full 360° pan & tilt night vision with a viewing diameter up to 200 metres
- Sony EX-View high performance camera module
- X18, X26 or 36 optical zoom, x12 digital zoom
- Dual camera option - view and record the whole picture on the context camera while zooming in on the main camera
- Vandal resistant hemisphere and housing
- Advanced privacy, preset positions & multiple tour options
- Mount options include wall, corner, ceiling, swan neck, and pendant
- Telemetry protocols: Videoswitch VXP-4, BBV (coax), PelcoD, PelcoP, Vista
- Automatic protocol and baud sensing
- Address set via menu
- Programmable pan limits
- 2 years warranty
- Weatherproofed to IP66
- Quick mount and release
- Video lift and gain facility
- 830nm and 940nm IR wavelength options
- Manufactured in the UK

### Order Codes

#### Semi-covert IR Models

Vi-D218	18:1 zoom, 830nm IR
Vi-D226	26:1 zoom, 830nm IR
Vi-D236	36:1 zoom, 830nm IR

#### Dual Camera Semi-covert IR Models

Vi-D218D	18:1 zoom, 830nm IR, Dual camera
Vi-D226D	26:1 zoom, 830nm IR, Dual camera
Vi-D236D	36:1 zoom, 830nm IR, Dual camera

#### Covert IR Models

940nm IR	Fully covert IR is available on all models. Add the suffix "L" to above stock codes.
----------	--

#### Accessories

Vi-PSU-1	CMOR Dome Power Supply, IP66, 24VDC
Vi-H264/ENC/WBX	H264 CMOR Dome IP Converter, IP66
Vi-H264/DEC/WBX	H264 IP Decoder, BNC output
Vi-AL1	CMOR Dome Alarm Module, 16 inputs
Vi-B2	Wall bracket and 3m cable
Vi-B2D	Wall bracket and 3m cable for dual camera dome
Vi-B3	Pendant mount (380mm) with 4m cable
Vi-B3D	Pendant mount (380mm) with 4m cable for dual camera dome
Vi-B4	Swan neck mount with 4m cable
Vi-B4D	Swan neck mount with 4m cable for dual camera dome
Vi-B5	Corner adaptor for wall bracket
Vi-B6	Pole adaptor
Vi-B7	Adaptor for brackets with 63.5mm PCD
Vi-B8	Ceiling adaptor. Total height including dome is 320mm

### Overview

The innovative patented design enables long distance IR (up to 100m with 830nm IR) to always track the dome movement ensuring full 360° pan and 90° tilt coverage. Cutting edge design enables the C-MOR® IR Dome to be extremely energy efficient whilst significantly reducing light pollution. The amount of light directed to the scene being viewed would require huge amounts of lighting using the old 'flood' approach. This means that not only is the picture and range much improved, but the C-MOR® IR Dome is greener too, using up to fifty times less energy.

Videoswitch, Ocean House, Redfields Industrial Park, Redfields Lane, Church Crookham, Hants GU52 0RD

[www.videoswitch.co.uk](http://www.videoswitch.co.uk)

Tel: 01252-851510 Fax: 01252-851296 Email: [sales@videoswitch.co.uk](mailto:sales@videoswitch.co.uk)

This product is designed and manufactured to the highest standards within our ISO9000 certified quality assurance system. It is certified to meet the CE mark requirements in accordance with the 89/336/EEC Electromagnetic Compatibility and 73/23/EEC Low Voltage directives. Due to a policy of ongoing product development, specifications may change without notice.



Vsd550E

## Technical Data

### Camera(s)

Camera	Sony Colour/monochrome Ex-View HAD 1/4" CCD PAL		
Resolution	460TVL, 440,000 pixels		
Colour sensitivity	0.1lux		
Monochrome sensitivity	0.01lux		
Optical zoom	x18	x26	x36
Angle of view (horiz)	48° - 2.7°	54° - 2.2°	58° - 1.7°
Focal length	4 - 74mm	3.5 - 91mm	3.4 - 122mm
Aperture	F1.4 to F3	F1.6 - F3.8	F1.6 - F4.5
Digital zoom	12x		

### IR Illumination

IR Control	Light sensing, Timer, Manual
IR wavelength options	830nm (semi covert) 940nm (covert)
Night time range	100m (830nm ) 40m (940nm )

### Mechanics

Pan speed	360°/sec
Tilt speed	200°/sec
Pan angle	360° continuous pan rotation
Pan limits	a left and right limit may be programmed
Tilt angle	+5 to -90
Pan/Tilt to zoom ratio	Menu programmable relation between zoom and rate

### Physical and Environmental

Material	Cast aluminium dome, polycarbonate hemisphere
Operating temperature	-35°C to 50°C
Environmental	IP66
Finish	Grey (Black and other colours to order)

### Telemetry

RS485	Videoswitch VXP4, PelcoD, PelcoP, Vista (auto sensing)
Addressing	Set via menu
Baud rate	9600, 4800 or 2400 baud (auto sensing)
Coax telemetry	BBV compatible (auto sensing)
Auto protocol sensing	Yes

### Features

Dynamic privacy zones	24 zones up to 8 displayed simultaneously
Presets	100
Preset tours	8
Resolution preset	0.02 degree
Camera/Preset titles	16 alphanumeric characters
Video amplification	HF lift & gain, menu controlled
Video launch amplifier	0-6dB 8 steps
Password Protection	Yes
Photocell	Inbuilt
Fan	Yes
Heater	Yes
Quick mount/release	The dome hooks safely onto the mount without the need of a safety wire and is secured using a hand operated tightening wheel. A single bolt provides both quick installation of the cover and tamper protection.
Origin	Manufactured in the UK

### Power

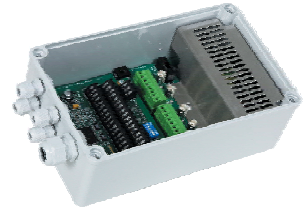
Power requirement	24VDC @ 2.5A
-------------------	--------------

### Options

Alarm Module	Vi-ALM1 (16 alarm inputs)
Power supply	Vi-PSU1 or Vi-PSU1A (with alarms)
Mounting options	Wall, corner, swan-neck, pendant, post
Colours	Standard colour is light grey. Black and other colours available on request

## Accessories

Vi-PSU1 Power Supply  
(with Vi-AL1 Alarm module fitted)



Vi-B2 Wall mount bracket



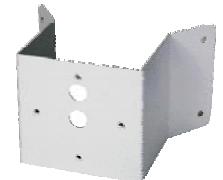
Vi-B3 Pendant mount



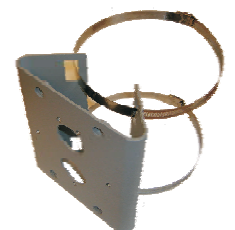
Vi-B4 Swan neck mount



Vi-B5 Corner adaptor



Vi-B6 Pole mount adaptor



Videoswitch, Ocean House, Redfields Industrial Park, Redfields Lane, Church Crookham, Hants GU52 0RD

[www.videoswitch.co.uk](http://www.videoswitch.co.uk)

Tel: 01252-851510 Fax: 01252-851296 Email: [sales@videoswitch.co.uk](mailto:sales@videoswitch.co.uk)

This product is designed and manufactured to the highest standards within our ISO9000 certified quality assurance system. It is certified to meet the CE mark requirements in accordance with the 89/336/EEC Electromagnetic Compatibility and 73/23/EEC Low Voltage directives. Due to a policy of ongoing product development, specifications may change without notice.



Vsd550E