

## V1500X-SCCS-1 System Controller



- Compatible with ViconNet control systems, including VMDC, and Pilot/NOVA matrix control systems
- Connection in RS-232, RS-422 or IP
- 3 function proportional joystick for pan, tilt and zoom
- Backlit LCD with touch-sensitive controls

### Overview

The V1500X-SCCS-1 is a desk-top style multi-function system controller designed to operate with Vicon's Pilot/NOVA™ matrix systems and ViconNet® Digital Video Management systems, including the Virtual Matrix Display Controller (allows ViconNet functioning to simulate as a traditional matrix control system); this is the only "keypad" that can be used with the VMDC. System connection, from the rear panel, can be RS-232, RS-422 or IP (for ViconNet and Virtual Matrix modes only). The System Controller can be simultaneously connected to both a non-IP ViconNet/Virtual Matrix system and a Pilot/NOVA system.

### Modes

The V1500X-SCCS-1 System Controller has three primary modes of operation: Pilot mode, ViconNet mode and Virtual Matrix mode. A fourth mode, Setup, provides for system configuration, programming sounds and diagnostics. All operation modes provide for standard camera, monitor, preset, tour, and salvo selections as well as standard PTZ, lens, auxiliary relay, lens speed, auto-pan and auto-iris controls. Macros can also be created and recalled.

In ViconNet and Virtual Matrix modes, the System Controller also provides control access to multi-screen controls, Quick Playback and Playback Speed. In IP ViconNet/Virtual Matrix mode, the V1500X-SCCS-1 can connect up to 63 workstations.

### Operation

The primary display is a touch sensitive color LCD screen, which displays information based on mode and function selection. Touching icons on the LCD screen activates these functions. Status messages are displayed in boxes on the screen.

The controller employs a three function, proportional joystick for pan, tilt and zoom control. A twist control on the joystick controls zoom functions; focus and iris are simple pushbutton controls. A standard numerical keypad with back/clear buttons, as well as camera and monitor select keys, are provided.

A set of keys offers special functions, including display options, Macro and Mode selection, Help, Preset and Alarm. Shift is used with other keys for additional functions.

A Jog/Shuttle wheel, which provides Frame Advance or Reverse and Fast Forward and Reverse, and buttons for Record, Freeze, Play and Stop are used in ViconNet and Virtual Matrix modes only.

Up to 10 users can be logged on to the controller. There are two authorization levels, manager and user. A manager has all configuration and operation privileges while a user can only operate the unit.

Finished in silver, the System Controller has tactile robust pushbuttons of blue, black and gray. A 15 W input power supply is supplied.

## Controls and Connectors

### Rear Panel Connectors:

Ethernet: RJ-45. RS-422: 6-pin screw terminal (female). RS-232: 9-pin D-shell (female) for Flash Upgrade or direct connection to a ViconNet/VMDC in RS-232 Port mode. Power: 2-pin screw terminal (female). USB, Parallel Port (25-pin D-shell) and RS-485 (9-pin D-shell): for future use.

### Front Panel Controls:

LCD Panel: displays programming and operation screens, touch sensitive. Numeric Keypad: number entry. Camera Key: enter camera number. Monitor Key: enter monitor number. Special Function Keys: select programming and operation screen; Mode, Macro, Multi-Screen, Full Screen. Preset Key: enter preset number. Alarm Key: acknowledge alarm (buzzer on/off software selectable). Shift: for additional functionality, i.e., set preset/record macros in Pilot mode; select Workstation in ViconNet/VMDC mode. Help Key: display on-screen help. Focus Near/Far Keys: manually focus camera view, momentary. Iris Open/Close Key: manually open or close camera iris, momentary. Joystick: deflect to pan and tilt mechanism in desired direction; diagonal motion provides simultaneous pan/tilt; twist top to zoom in/out. Jog/Shuttle: frame advance/reverse, fast forward and reverse (ViconNet/VMDC only). ViconNet/VMDC Control Keys: record, freeze, play and stop video.

## Compatibility

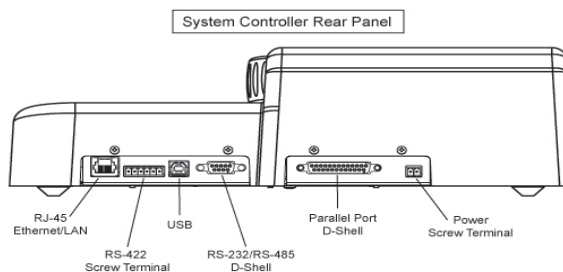
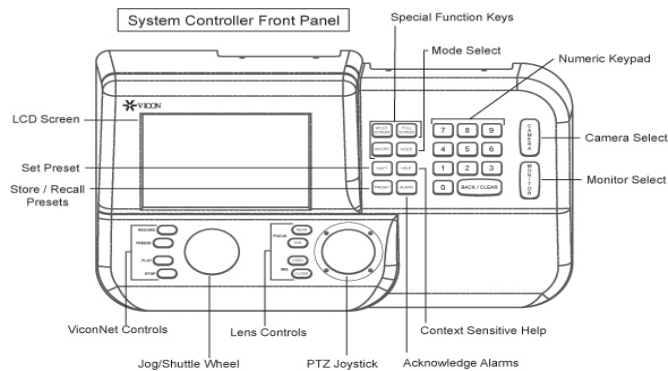
**Vicon Systems:** VMDC (required), ViconNet and Pilot/NOVA control systems.

## Mechanical

**Construction:** Plastic.  
**Finish:** Silver with blue, black and gray keys.  
**Mounting:** Desk-top.  
**Dimensions:** Height: 4.00 in. (192 mm). Width: 13.75 in. (349 mm). Depth: 8.75 in. (222 mm).  
**Weight:** 4.0 lb (1.8 kg).  
**Input Power:** 13.6 VDC  $\pm$ 2%.  
**Input Current:** 140 mA.  
**AC Input:** 15 W power supply adapter provided, 120/230 VAC.  
**Power Consumption:** 2 W.

## Environmental

**Operating Conditions:** 32 to 104° F (0 to 40° C).  
**Humidity:** Up to 90% relative, non-condensing.  
**Approvals:** FCC Class A; CE.  
**Warranty:** 3 years.



Data Sheet Number: V201  
 Dated: 09/2010  
 Vicon Data Sheet Number: 8009-7201-02-00  
 Specifications subject to change without notice.

ViconNet and its logo are registered trademarks of Vicon Industries Inc.  
 NOVA is a trademark of Vicon Industries Inc.  
 Copyright © 2010 Vicon Industries Inc. All rights reserved.