



# PRODUCT SPECIFICATION

**MODEL:** V10UM

**PRODUCT CODE:** 1875

**DESCRIPTION:** LIGHT-DUTY INDOOR UNIVERSAL MOUNT

Model V10UM Universal Light-Duty Indoor Mount is designed to support camera/housing combinations weighing up to 20 pounds (9.1 kg). Available for wall or ceiling installation, this indoor mount includes a V1000AH Adjustable Head that allows for full 360-degree rotation and varying tilt angles.

NOTES	SPEC NO.	REV.	SEC.
SUPERSEDES PRODUCT SPECIFICATION 132-287	601	589	7



V10UM UNIVERSAL MOUNT

## TECHNICAL INFORMATION

### MECHANICAL

Mounting: Wall or ceiling.  
 Type: Adjustable  
 Angular Movement: Vertical;  $\pm 60^\circ$   
 Horizontal;  $360^\circ$   
 Application: Indoor  
 Load Rating: 20 lb. (9.1 kg).  
 Dimensions: See Figure 1.  
 Weight: 2.2 lb (1.0 kg).

Construction: Mount; rectangular steel tubing.  
 Head; die-cast zinc.  
 Finish: Mount; brushed chrome.  
 Head; polished chrome.  
 Shipping Dimensions: Height; 5.6 in. (14 cm).  
 Width; 11.25 in. (28.6 cm).  
 Depth; 12.0 in. (30 cm).  
 Shipping Weight: 2.7 lb (1.2 kg).  
 Shipping Volume:  $0.4 \text{ ft}^3$  ( $0.01 \text{ m}^3$ ).

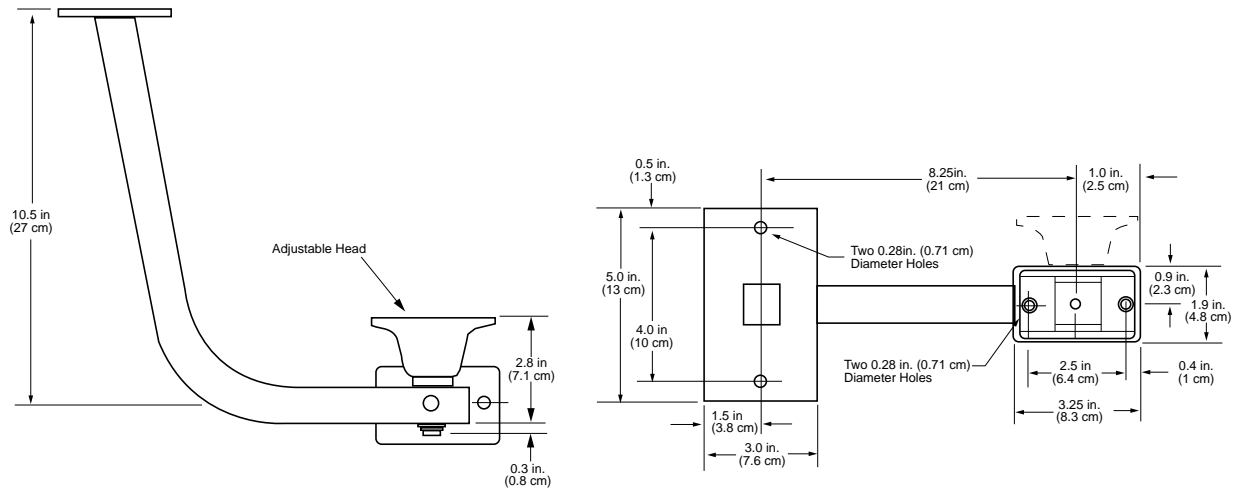


Figure 1  
Outline Drawing

Product specifications subject to change without notice.  
 Copyright © 1999 Vicon Industries Inc. All rights reserved.

Vicon part number 8006-7601-00-00  
 Vicon and its logo are registered trademarks of Vicon Industries Inc.