

KOLLECTOR PRO XG

16-Channel Digital Video Recorder



ViconNet Rev 3.0 improves system interoperability through integration with industry-leading security systems:

- Lenel's OnGuard® Access Security System
- Hirsch's Velocity™ Access Security System
- ObjectVideo's VEW™ Video Analysis and Tracking Systems

Take advantage of these other high-performance features found only in ViconNet's Rev 3.0

- Geographic mapping and control GUI
- 4-output analog matrix option controlled through the ViconNet interface
- System updates over the network
- 8 alarm output relays
- Improved resolution of 720 x 488
- PTZ/Dome control

Kollektor Pro XG, the next generation, offers a new look that fits into today's style. Vicon's most popular DVR is still a powerhouse. ViconNet's Rev 3.0 pushes the Kollektor Pro XG to a level of performance never seen in a cost-effective unit. A geographical map control and an optional active 4-output analog matrix are the highlights to an extensive list of feature enhancements that improve the Pro's overall use in any system.

System integration has also been a focus of ViconNet's development, and now you can choose an integrated solution that ties your digital video system together with the leaders in access and video analysis. Kollektor Pro recorders can now be an integral part of a complete security system with Hirsch and other industry leaders.

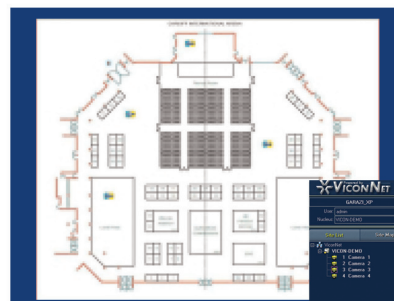
As a DVR, Kollektor Pro is unrivaled in its combination of cost-effectiveness and performance. Options include configurations that span the range from 30 fps to 240 fps with storage options up to 1.2 TB internally and 8 TB with an optional external RAID.

World Headquarters
Hauppauge, New York
631-952-CCTV (2288)
800-645-9116

European Headquarters
Fareham, PO 15 5TX
United Kingdom
+44 (0) 1489 566300

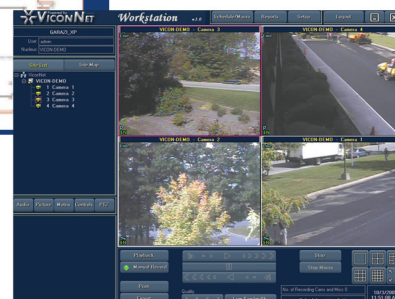
Brussels Office
Zaventem
Belgium
+32 (2) 712 8780

Hong Kong Office
Shatin
New Territories
852-2145-7118



Map Interface

Main ViconNet Interface



Model Number**	Product Code	FPS	Channels	HD (GB)	CD-R/W	16 x 4 Analog Matrix	Max Capture Resolution (pixels)
KPX30/KPX30M Series	8900-01	30	16	160*	✓		720 x 488
	8902-01	30	16	160*	✓	✓	720 x 488
	8986-01	30	16	320*	✓		720 x 488
	8985-01	30	16	320*	✓	✓	720 x 488
	8904-01	30	16	500*	✓		720 x 488
	8906-01	30	16	500*	✓	✓	720 x 488
KPX60/KPX60M Series	8908-01	60	16	250*	✓		720 x 488
	8910-01	60	16	250*	✓	✓	720 x 488
	8988-01	60	16	400*	✓		720 x 488
	8987-01	60	16	400*	✓	✓	720 x 488
	8912-01	60	16	660*	✓		720 x 488
	8914-01	60	16	660*	✓	✓	720 x 488
KPX120/KPX120M Series	8916-01	120	16	250*	✓		720 x 488
	8918-01	120	16	250*	✓	✓	720 x 488
	8990-01	120	16	500*	✓		720 x 488
	8989-01	120	16	500*	✓	✓	720 x 488
	8920-01	120	16	900*	✓		720 x 488
	8922-01	120	16	900*	✓	✓	720 x 488
	8924-01	120	16	1200*	✓		720 x 488
KPX240/KPX240M Series	8926-01	120	16	1200*	✓	✓	720 x 488
	8928-01	240	16	320*	✓		720 x 488
	8930-01	240	16	320*	✓	✓	720 x 488
	8932-01	240	16	900*	✓		720 x 488
	8934-01	240	16	900*	✓	✓	720 x 488
	8936-01	240	16	1200*	✓		720 x 488
	8938-01	240	16	1200*	✓	✓	720 x 488

*20GB of hard drive space is dedicated for the application.

**Model number with M includes 16 x 4 analog matrix. Collector Pro is available with optional audio capability.

Technical Information

ELECTRICAL

Input Voltage:

120 - 230 VAC +/- 10%, 50/60 Hz, nominal.
NOTE: Vicon requires the use of uninterruptible power supply systems (UPS) to prevent voltage fluctuations that can affect operation and cause damage to the equipment. Failure to comply voids the warranty.

Current:

3 A.

Power Consumption:

KPX30 and KPX60: 400 W nominal.
KPX120 and KPX240: 450 W nominal.

Heat Equivalent:

KPX30 and KPX60:
22.75 btu/min (5.7 kg-cal/min).
KPX120 and KPX240: 25.6 btu/min (6.4 kg-cal/min).

System:

CPU: Intel® Celeron® 1.8 MHz, minimum, for 30 and 60 fps recorders. Intel Pentium IV 2.66 MHz minimum for 120 and 240 fps recorder.
RAM: 512 MB. HDD: 160 - 1200 GB. (Based on model. See Table.)

Video Recording Rate:

LAN: Onboard 100/1000 Mbps interface.
16 simultaneous channels @ 30, 60 or 120 frames per second, maximum. 30 fps per channel, maximum.

Video Recording Resolution:

480 horizontal TV lines max at 720 x 488 pixel pallet (864 x 586, PAL).

Video Quality:

Selectable using a 4-position bar. Numbers 1, 5, 6, 7 in the bar represent 3 pixel pallet sizes within 2 compression rates.

Analog Video Matrix:

4-output, optional.

Alarm Output:

8 output relays.

SOFTWARE OPERATION

Configuration:

The Main Window Screen contains a 16-channel local video display area, device tree, controls and toolbars used to operate and setup the system. A configuration menu is used to setup the cameras, macros, devices, authorization, Alarms, Picture Database Utilities, Authentication and Sequence Sessions.

Surveillance Operation:

The video display area can show up to 16 simultaneous local cameras providing controls for video quality. Simultaneous live, record and play back video can be displayed with full PTZ control

Macros:

Automatic operation routines can be defined for locally recorded or live cameras with programmable functions of command duration, recording location, picture quality, refresh mode, recording rate (fps), sensor and relays and alarm activation.

Authorization:

Administrator and Guest group rights can be setup to perform specific system functions.

Alarms:

Alarms can be setup to activate using macros or triggered by sensors. Alarms can also be triggered on video loss or an "Area of Interest" motion detection screen.

MECHANICAL

Application:

Indoor.

Mounting:

Standard 19 in. (483 mm) rackmount and stackable, 4U height.

Dimensions:

Height: 7.0 in. (178 mm).
Width: 19.0 in. (483 mm).
Depth: 120 fps: 22.0 in. (559 mm).
240 fps: 24.25 (616 mm).

Note: Dimensions exclude connectors and rack mount handles.

Weight:

50.0 lb (22.6 kg), approximately.

Construction:

Steel case and hardware.

Color:

Black.

ENVIRONMENT

Operating Temperature

Range:

32 to 104° F (0 to 40° C).

Operating Humidity

Range:

0 to 95% relative, noncondensing.