

BP52

Alarm Panel

NEW ALARMS

V LINK

VBX



Overview

The BP52 Alarm Panel acts as the central brain of a Verkada alarm system.¹ With 32 input zones, it can easily replace traditional panels and take over existing sensors without new wiring. Organizations with larger sites can extend coverage with BE32 expanders. For high availability, organizations can add LTE backup and VBX batteries to the BP52, which operates locally with expanders and keypads — meaning that only one cellular backup device is needed for the entire site.

Like other Verkada products, the BP52 is cloud-managed and natively integrates with other devices in the Verkada ecosystem. Through the Command web or mobile app, users can view live and historical sensor activity, access zone mapping, and manage software-defined partitions. Organizations additionally benefit from alerts for offline devices, 24/7 support, and automatic firmware updates, ensuring their alarm panel is always operational and improving over time.

Key features

Complete site coverage

- 32 inputs for wired sensors, each with 12V AUX power
- 4 RS485 outputs for keypads and expanders
- 2 relay outputs for sirens and strobes
- Built-in 4-port PoE switch for hubs and keypads

Wireless support

- Built-in VLink hub connects up to 160 wireless sensors
- Unlimited expansion via PoE hubs, keypads, and repeaters

Cloud-managed

- See the live status of all connected sensors and devices on an interactive zone map
- Automatic health checks and offline device alerts
- Automatic firmware updates for the latest features

Highly available

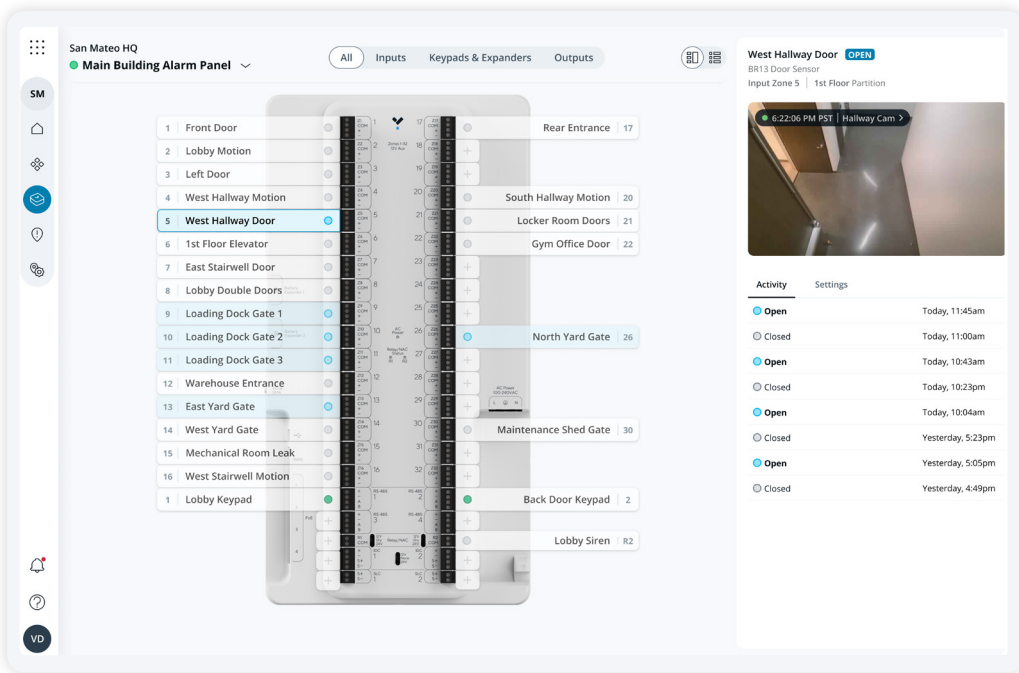
- 2 built-in slots for [VBX batteries](#) (sold separately)
- Built-in mount for [cellular backup communicator](#) (sold separately)

1. Sites in New Alarms must have one alarm panel to use intrusion sensors. Multiple panels are not allowed per site. The panel is not required for sites with camera triggers only.



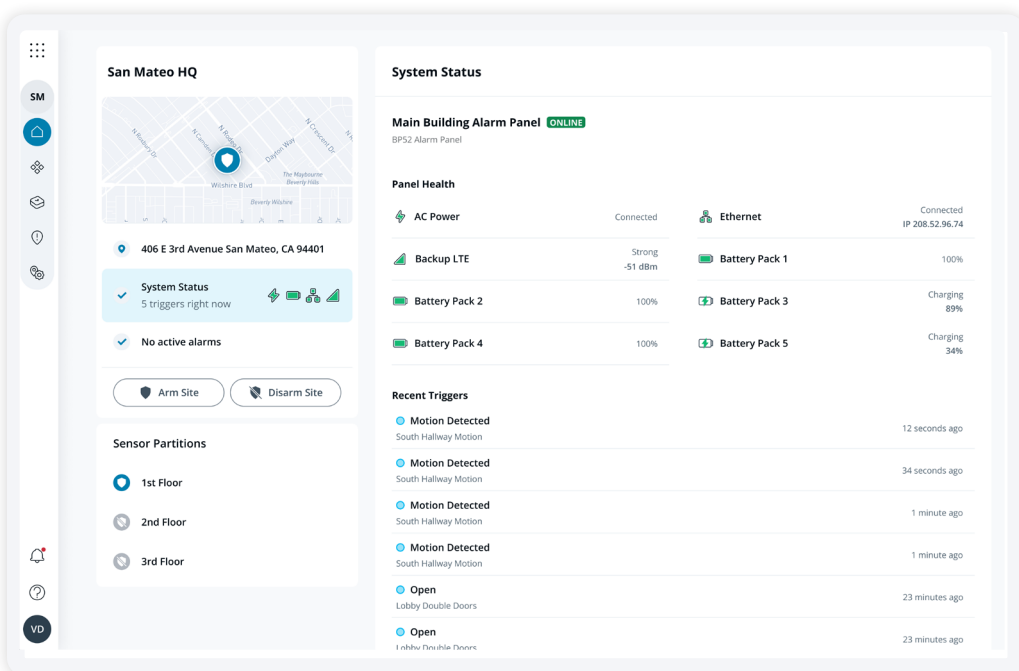
Cloud-managed

Verkada's cloud-based management platform, Command, brings visibility and control at scale for many alarm systems across multiple sites. Users can easily check live sensor activity, access the exact zone mapping for a panel, and create software-defined partitions.



Highly available

The BP52 integrates with our cellular backup communicator and VBX battery system to deliver high availability for the entire alarm system. Because the BP52 operates locally with all the expanders and keypads at a site, only one cellular backup communicator is needed for the entire site.





BP52

Tech Specs

Power and network

Power Consumption	175W max See Output Specifications table for load limits (page 4)	Uplink	100/1000 Mbps RJ45 port, USB 2.0 (for ACC-CEL-LTE-2)
Power Input	100-240V AC (50-60Hz) ¹ 2x battery slots (for ACC-VBX-200WH) 2x battery enclosure ports (for ACC-VBX-ENC)	Wireless Communication	VLink sub-GHz transceiver
VLink Wireless Range	Please refer to the downstream device datasheet		

Inputs and outputs

Alarm Inputs	32x inputs with 12V DC aux power Compatible with variable EOL resistors (1k Ω - 4.7k Ω)	Relay Outputs	2x relays for siren/strobe/NAC with switch- selectable voltage & optional dry config: <ul style="list-style-type: none">• 12 or 24V DC wet operation• 24V DC dry operation
Conventional Fire Input (IDC)²	2x 2-wire or 2x 4-wire Initiating Device Circuit inputs (conventional) with switch-selectable 12/24V DC aux power Note: IDC inputs share a single switch for voltage selection	Addressable Fire Input (SLC)²	2x 2-wire Signaling Line Circuit inputs (addressable) with 36V DC aux power
RS485 Outputs	4x RS485 outputs with 36V DC aux power	PoE Outputs	4x PoE+ / 802.3at capable ports 60W total power budget
Tamper Detection	Yes		

General

Dimensions (with enclosure)	Height: 21.9" (55.7 cm) Width: 12.7" (32.3 cm) Depth: 4.6" (11.6 cm)	Operating Temperature and Humidity	32 to 122° F (0 to 50° C) 0-90% RH non-condensing
Weight	16.2 lb (7.3 kg)	Warranty	10 years
Certifications	FCC, IC, UKCA, RCM, CEC BC, UL/IEC 62368-1, CSA NO22.2 62368-1		

Installation

Included Accessories	AC cable, VLink antenna, 32x 1k Ω EOL resistors, wall mount, 2x keys for built-in lock, flathead screwdriver, 4x plywood screws	Mounting Options	Wall mount
-----------------------------	--	-------------------------	------------

1. Can directly connect to AC mains or use included AC cable

2. Future software support



Output Specifications

Power Output	Voltage Rail				
	5V	12V	24V	36V	54V
Zones	-	1A max across Zone 1-16 1A max across Zone 17-32	-	-	-
Relays	-	Switch selectable, 1.7A max each	Switch selectable, 1A max each	-	-
IDCs	-	Switch selectable, 0.3A max each	Switch selectable, 0.3A max each	-	-
SLCs	-	-	-	0.25A max each	-
RS485	-	-	-	2A max each, 72W total	-
USB-A	1A max	-	-		-
PoE	-	-	-		30W per port, 60W total
Max Allowable Load Per Voltage Rail	1A max (5W total)	4.4A max (52.8W total)	2.6A max (62.4W total)	2.5A max (90W total)	60W total
Max Simultaneous Loading Across All Outputs	130W total				



Ordering Information

Panel

Model Number	Description	Cost (MSRP) USD
BP52-HW-NA	BP52 Alarm Panel, North America Type B Plug	\$899

Cellular Backup Communicator

ACC-CEL-LTE-2	Cellular Backup Communicator for BP52 Panel	\$349
LIC-BX-CEL-1Y-CAP	1-Year Cellular Backup License With Data, Capacity Increase	\$299
LIC-BX-CEL-3Y-CAP	3-Year Cellular Backup License With Data, Capacity Increase	\$849
LIC-BX-CEL-5Y-CAP	5-Year Cellular Backup License With Data, Capacity Increase	\$1,349
LIC-BX-CEL-10Y-CAP	10-Year Cellular Backup License With Data, Capacity Increase	\$2,699
LIC-BX-CEL-1Y-RNW	1-Year Cellular Backup License With Data, Renewal	\$299
LIC-BX-CEL-3Y-RNW	3-Year Cellular Backup License With Data, Renewal	\$849
LIC-BX-CEL-5Y-RNW	5-Year Cellular Backup License With Data, Renewal	\$1,349
LIC-BX-CEL-10Y-RNW	10-Year Cellular Backup License With Data, Renewal	\$2,699

Backup Battery

ACC-VBX-200WH	200Wh Backup Battery for BP52 Panel	\$199
ACC-VBX-ENC	Dual Battery Enclosure for BP52 Panel	\$299