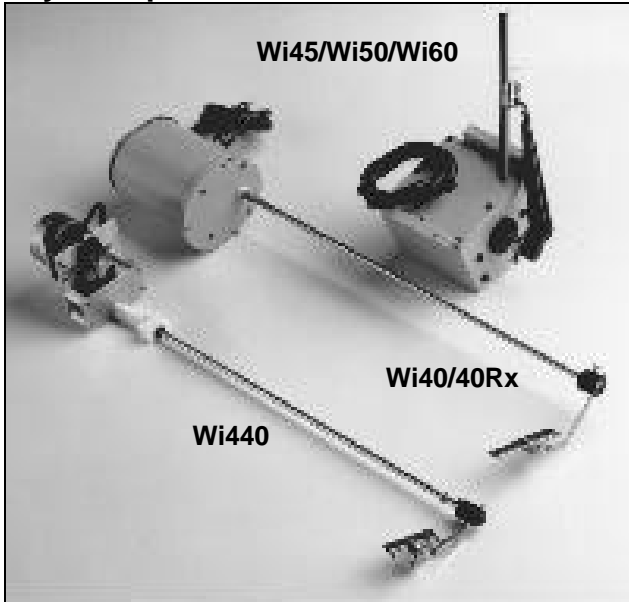


Technical Specification

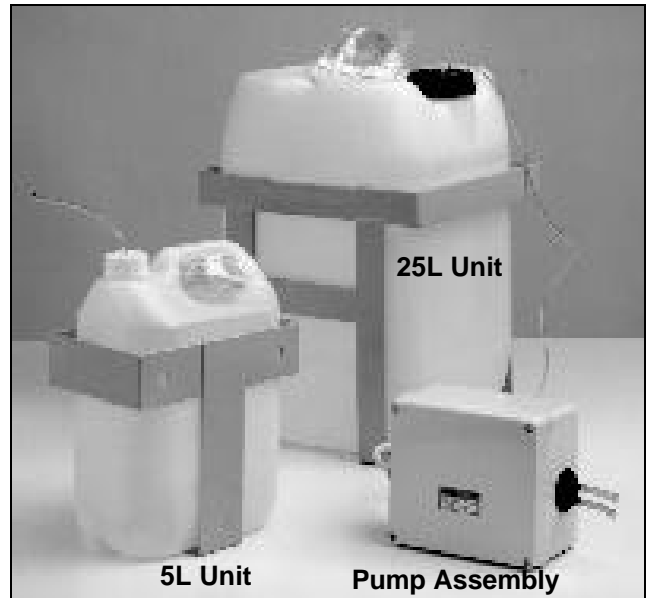
DESCRIPTION

Molynx provide a range of accessories to fit their Camera Housings. These include a number of wiper units and two sizes of washer units designed to provide an economical solution for CCTV applications.

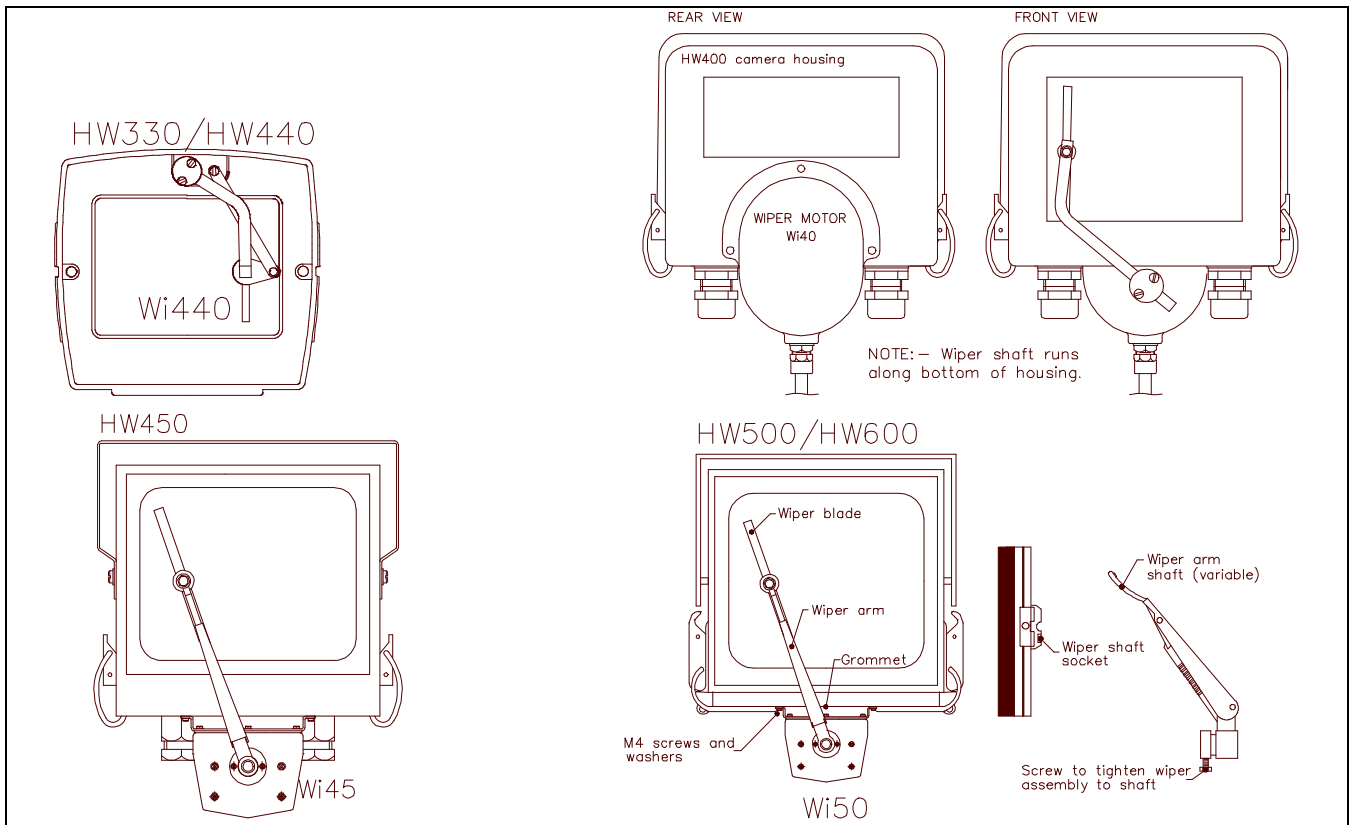
Molynx Wipers and accessories



Molynx 5 and 25 Litre Washer Units

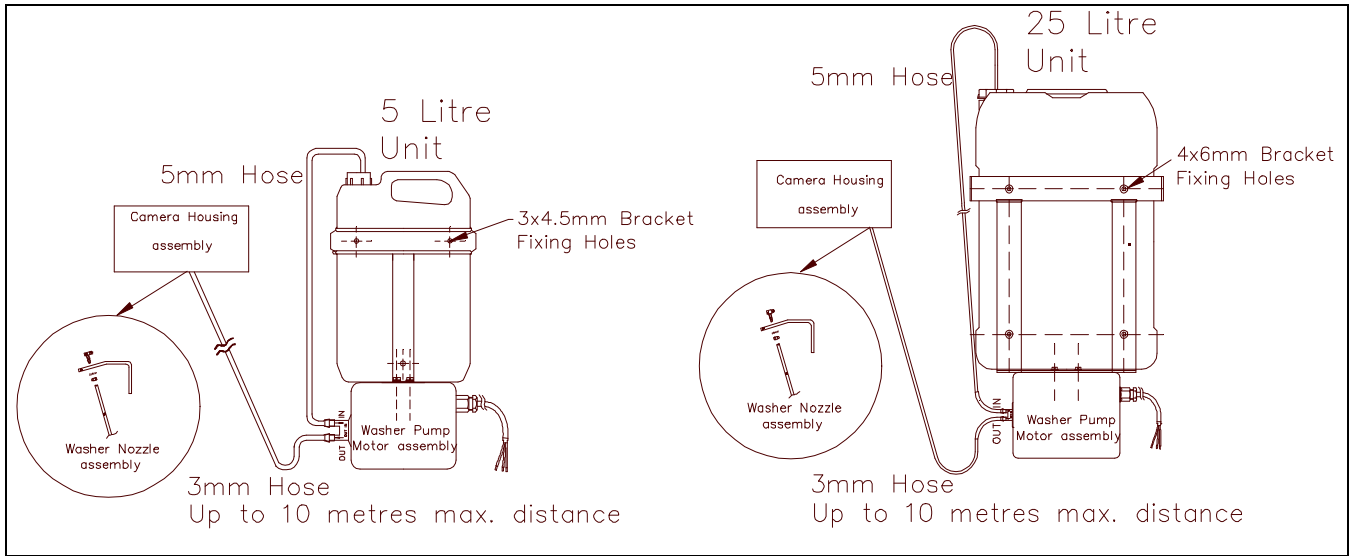


WIPER MOUNTING DETAILS



Whilst every effort has been made to ensure that all information is correct at the time of publication, Molynx reserve the right to alter specifications without prior notice

WASHER UNIT MOUNTING DETAILS



SPECIFICATIONS

Mechanical

WIPER UNIT	L (mm)	W(mm)	H(mm)	Weight	Material	Finish
Wi440	Internal fitting within Connoisseur Housing			800g packaged	Aluminium	N/A
Wi40 Wi40Rx	casing - 112mm shaft - 400 (or 450mm Wi40Rx)	127mm	98mm	1.8kg packaged	Aluminium	Polyester powder coat (RAL7032)
Wi45	125mm	127mm	98mm	1.2 kg packaged	Aluminium	Polyester powder coat (RAL7032)
Wi50/Wi60	125mm	127mm	98mm	1.2 kg packaged	Aluminium	Polyester powder coat (RAL7032)
WASHER UNITS						
WA5	209	152	430	3kg empty, 7kg full	Wall Bracket : Zinc plated mild steel	Wall Bracket : Polyester powder coat (RAL7032)
WA25	311	300	430	4kg empty, 28kg full	Washer Bottle: H.D.P.E	thermoplastic

Electrical

Product Code	Voltage Options	Maximum Current Rating:	Operating Frequency:
Wi440	230V AC, 110V AC, 24V AC	25mA, 50mA, 250mA	50Hz ±2Hz (60Hz option)
Wi40/Wi40Rx	230V AC, 110V AC, 24V AC	25mA, 50mA, 250mA	
Wi45/Wi50/Wi60	230V AC, 110V AC, 24V AC	25mA, 50mA, 250mA	
PUMP-240	230V AC (195.5 TO 253V)	230mA	
PUMP-110	110V AC (93.5 TO 121V)	500mA	
PUMP-24	24V AC (20.4 TO 26.4V)	2.5Amps	

Whilst every effort has been made to ensure that all information is correct at the time of publication, MolyNX reserve the right to alter specifications without prior notice