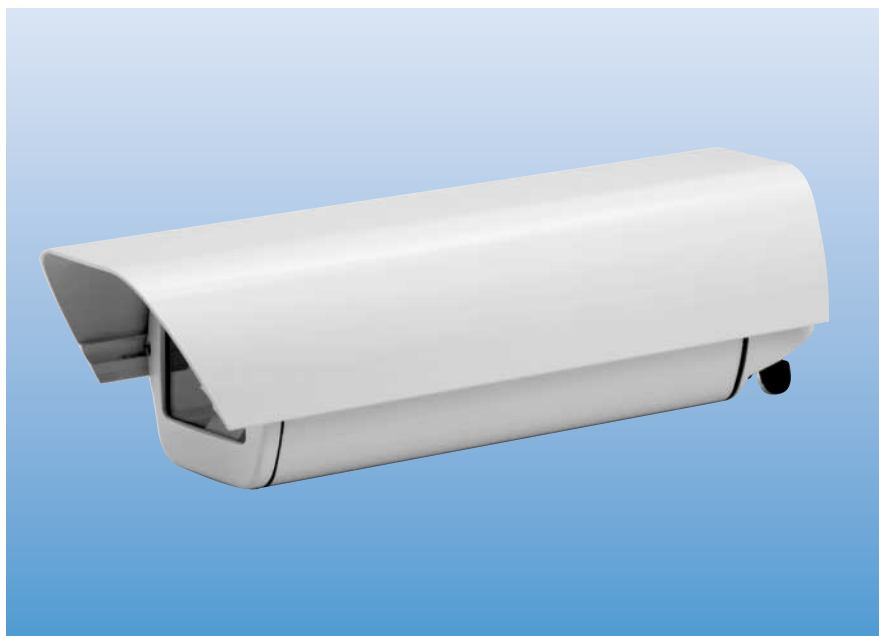









## Wide-bodied environmental camera housing

An environmental enclosure designed for housing modern CCD cameras fitted with zoom lenses. Ideal for use with pan-tilt assemblies.



-  Supplied with heater as standard
-  IP66 weatherproofing
-  Housing body easily removed to enable in-situ adjustment of camera and lens
-  Optional power supplies providing 12VDC or 24VAC power for cameras are available
-  Fitted with three PG9 cable glands
-  Easily adjustable sun-shield
-  Easy-mount side-swinging camera tray

### Safe and easy access

The outer body of the housing is easily removed by releasing just two allen-key screws to provide easy in-situ access to the camera, lens and cabling. Set up of the camera and lens could not be easier.

In addition, the removed camera body can be safely hung from a hook provided especially for this purpose.

### IP66 weather-proofing

The closed design of the extruded housing-body is completed with cast-aluminium end-caps fitted with neoprene gaskets to ensure a rating of IP66.

### Sun-shield and heater

Supplied, as standard, complete with sun-shield and thermostatically controlled heater in a choice of two voltages 12 ~24 Volt, 20 Watt or 110 ~240 Volt, 40 Watt.

### Camera mounting kit

A selection of insulating spacers is provided to ensure the camera is electrically isolated; thereby minimising the possibility of ground loops. A pouch of moisture absorbing desiccant is also provided to remove trapped water-vapour.

### Cable access

Three PG9 glands provide for separate entry of power, video and control cabling.

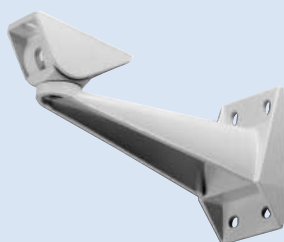
# VCH400

## Accessories

Power supply VCH950-12 / -24



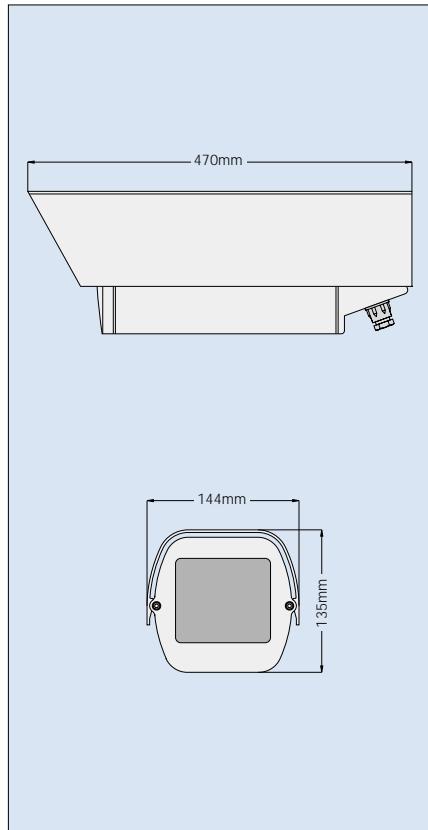
Housing wall-mount VCH900



## Technical data

<b>Mechanical</b>	
• Material	Aluminium extrusion body with cast aluminium end-caps and glass face-plate
• Usable volume (W x H x L)	90 x 85 x 320mm (without power-supply fitted)
• Finish	Epoxy polyester powder coat
• Colour	RAL9002 (Light grey)
<b>Electrical</b>	
• Cable entry	Three PG9 cable glands
• Heater type	Thermostatically controlled PTC
• Heater rating (VCH400-24)	12VDC ~24VAC, 20 Watt
• Heater rating (VCH400-230)	110 ~230VAC, 40 Watt
• Heater turn-on temperature	14°C ±3°
• Heater turn-off temperature	20°C ±3°
<b>Environmental</b>	
• Sealing	IP66
• Gaskets	Neoprene rubber
• Regulatory	CE

## Dimensions



## Ordering data

Type	Art. No.	Designation	Weight
VCH400-24	537832.0-001	Camera Housing OD 320mm 24VAC	3.506 kg
VCH400-230	537829.0-001	Camera Housing OD 320mm 230VAC	3.456 kg
VCH950-12	537816.0-001	Power supply 230VAC ~12VDC	0.481 kg
VCH950-24	537803.0-001	Power supply 230VAC ~24VDC	0.631 kg
VCH900	538323.0-001	Housing Mount Wall	0.612 kg

