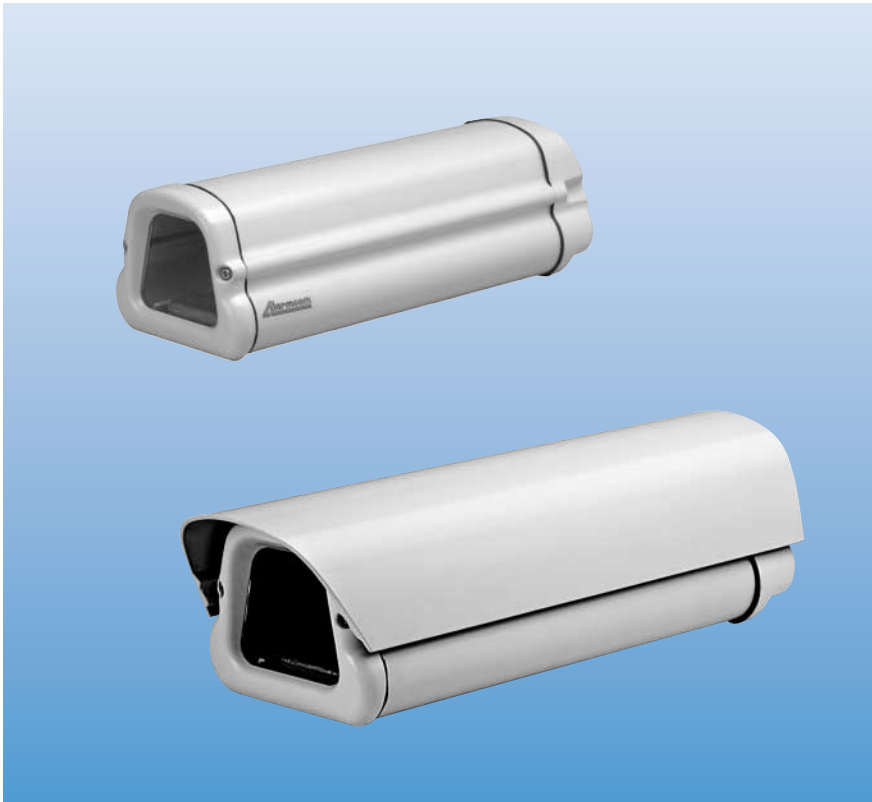


Weatherproof and dust-proof environmental housings

Attractive extruded aluminium housings designed to enclose and protect modern CCD cameras fitted with either fixed or variable focal-length lenses. Two models are available; VCH200, with fitted sun-shield and VCH210 without sun-shield.



Weather-proof version complete with easily adjustable sun-shield

IP66 weatherproofing with two screw access to camera and lens

Housing body easily removed to enable in-situ adjustment of camera and lens

Optional power supplies are available to provide 12VDC or 24VAC power for cameras

Easy-mount side-swinging camera tray

VCH200 is supplied as standard with a PTC heater

Safe and easy access

The outer body of the housing is easily removed by releasing just two allen-key screws to provide easy in-situ adjustment of camera, lens and all cabling.

The removed housing body can be safely hung from a hook especially provided for this purpose.

Two cable glands provide separate access for video and power.

IP66 weather-proofing

The closed design of the extruded housing-body is completed with cast-aluminium end-caps fitted with neoprene gaskets to ensure a weather-proof rating of IP66.

Reliable PTC Heaters

Positive temperature coefficient (PTC) heaters fitted as standard improve overall system reliability by automatically adjusting heat output to match the ambient conditions. Available in a choice of two ratings, 12~24 Volt, 20 Watt or 110~240 Volt, 40 Watt.

For warm, dry climates, VCH210 is available without a heater.

Camera mounting kit

A selection of insulating spacers is provided to ensure the camera is isolated from the housing, minimising the risk of electrical interference.

To ensure clear visibility, a pouch of moisture absorbing desiccant is provided to remove any trapped water-vapour from the sealed housing.

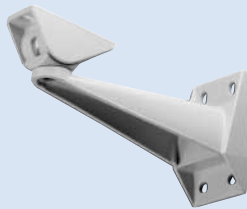
VCH200 / VCH210

Accessories

Power supply VCH960-12 / -24

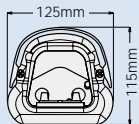


Housing mount VCH900

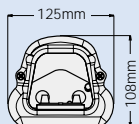
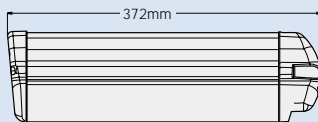


Dimensions

VCH200



VCH210



Technical data

Mechanical

• Material	Extruded aluminium body with cast end-caps and glass face-plate
• Usable volume (W x H x L)	65 x 69 x 250mm (without power-supply fitted)
• Finish	Epoxy polyester powder coat
• Colour	RAL9002 (off-white)

Electrical

• Cable entry	Two PG9 cable glands
• Heater type	Thermostatically controlled PTC element
• Heater rating (VCH200-24)	12VDC ~ 24VAC, 20 Watt
• Heater rating (VCH200-230)	110 ~ 230VAC, 40 Watt
• Heater turn-on temperature	14°C ±3°
• Heater turn-off temperature	20°C ±3°

Environmental

• Sealing	IP66
• Gaskets	Neoprene rubber
• Regulatory	CE

Ordering data

Type	Art. No.	Description	Weight
VCH200-24	537793.0-001	Housing OD 300mm 24VAC heater	3.316 kg
VCH200-230	540816.0-001	Housing OD 300mm 230VAC heater	3.316 kg
VCH210	557142.0-001	Housing OD 300mm no heater	3.316 kg
VCH210-24	541158.0-001	Housing DP 300mm 24VAC heater	3.316 kg
VCH210-230	541145.0-001	Housing DP 300mm 230VAC heater	3.316 kg
VCH960-12	537858.0-001	Power supply 230VAC ~ 12VDC	0.371 kg
VCH960-24	537845.0-001	Power supply 230VAC ~ 24VDC	0.371 kg
VCH900	538323.0-001	Housing wall mount	0.612 kg

