



# CCTV

## SISTORE MX NVS – software-based video recording



Answers for infrastructure.

**SIEMENS**



## SISTORE MX NVS – Network Video Software

SISTORE™ MX NVS is a software package for network video recording, allowing the operator to view live images, as well as to support recording, playback and remote access for up to 32 IP cameras per installed system. SISTORE MX NVS can be used in a wide variety of applications, including retail, banking, traffic and transportation, to name but a few. It fully supports the connection of a variety of network cameras (IP cameras) and video servers from different manufacturers. SISTORE MX NVS can be installed on high-performance industrial PCs – optionally equipped via USB with alarm inputs and outputs – this Network Video Software satisfies the requirement for special security applications to optimum effect.

# Software-based IP camera recording

## ■ Software-based video monitoring and recording with up to 32 IP cameras per installed system

This software package operated in conjunction with a standard PC supports network-based video monitoring and recording for up to 32 IP cameras per installed system.

## ■ Support of third-party IP cameras including PTZ control

In addition to IP cameras and IP modules from Siemens, SISTORE MX NVS can also record images from numerous third-party IP cameras that have already been installed and, if these are functional cameras, then SISTORE MX NVS also supports PTZ control over a network.

## ■ Support of megapixel recording

SISTORE MX NVS supports the recording of megapixel IP cameras. Megapixel recordings contain more information, particularly useful when using the integrated digital zoom feature.

## ■ Integrated motion detection

To optimise hard disk storage, the pixel-based motion detection system allows the user to define areas of interest in a scene and only when motion occurs inside this area, will the images be recorded. The motion detection can be used to trigger an alarm and increase the recording rate to ensure the most information is stored.

## ■ Integrated sabotage detection

SISTORE MX NVS is equipped with integrated sabotage protection,

recognising camera re-positioning, covering, spraying and defocusing.

## ■ Site plan feature for easy orientation in the monitored area

Cameras positioned in a site plan can be easily displayed via mouse click. This feature helps operating personnel to track suspicious people for example, without having to remember the next camera number.

## ■ Certified as complying with the German Accident Prevention Regulations for Banks (UVV-Kassen)

SISTORE MX NVS is certified as complying with the German Accident Prevention Regulations for Banks (the highest certification standard in Germany), which is required by every bank.

## ■ SISTORE MX NVS RemoteView

The SISTORE MX NVS can be used in conjunction with SISTORE MX NVS RemoteView to analyse the video recordings via remote access (via LAN or ISDN).

## ■ Expandable from a single IP camera to a system with literally thousands of IP cameras

With SISTORE MX NVS, it is possible to start with a one IP camera system and expand as the security demand increases to a limitless amount of IP cameras on the network. From one RemoteView client, it is possible to simultaneously view up to 32 IP cameras from 10 different SISTORE MX NVS.

## Highlights

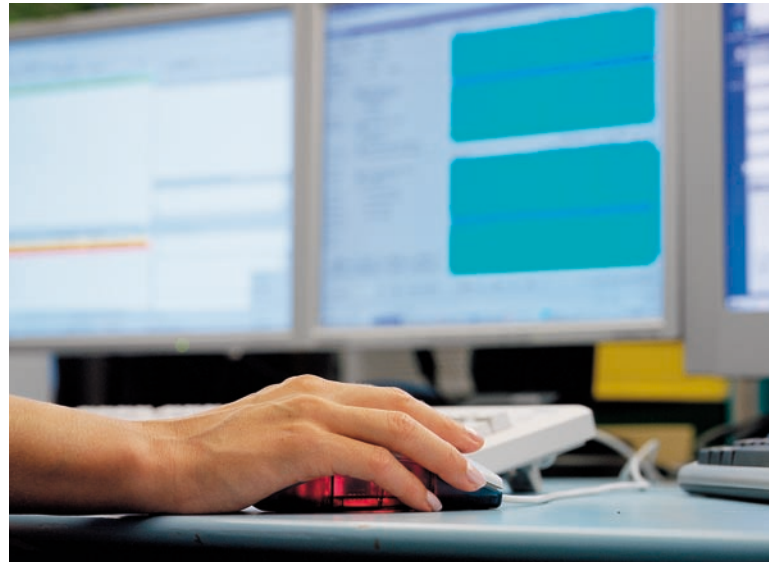
- Software package for recording & viewing up to 32 IP cameras
- Supports megapixel IP camera recording including PTZ
- Motion detection integrated
- Sabotage detection integrated
- Site plan feature for easy orientation
- UVV-Kassen certified
- Remote access using RemoteView software
- Scalable from a single IP camera to literally thousands

Transportations systems



Banks





Supplied with the software, a dongle and a user manual.

# Simple software – complete functionality

## ■ Quick installation through plug & play

The system is ready for immediate use after installing the software and setting up the IP cameras. When developing SISTORE MX NVS the focus was on simple, clear controls and functional reliability.

## ■ Optimised recording modes

SISTORE MX NVS provides optimised recording modes for any situation. If via the built-in motion detection, movement occurs, or if an external alarm input is triggered, the image quality and recording speed can be increased, enabling

more information to be recorded. During standard long-term recording on the other hand, the image quality and recording speed can be decreased to save storage space, if required.

## ■ Pentaplex operation

SISTORE MX NVS is a “pentaplex” system – a system that enables the user to record, view live images and replay previously recorded video at the same time. In addition the system allows RemoteView mode and the external archiving of recordings.

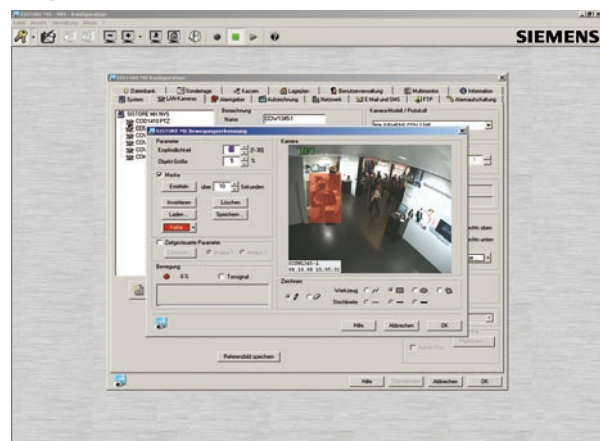
## Highlights

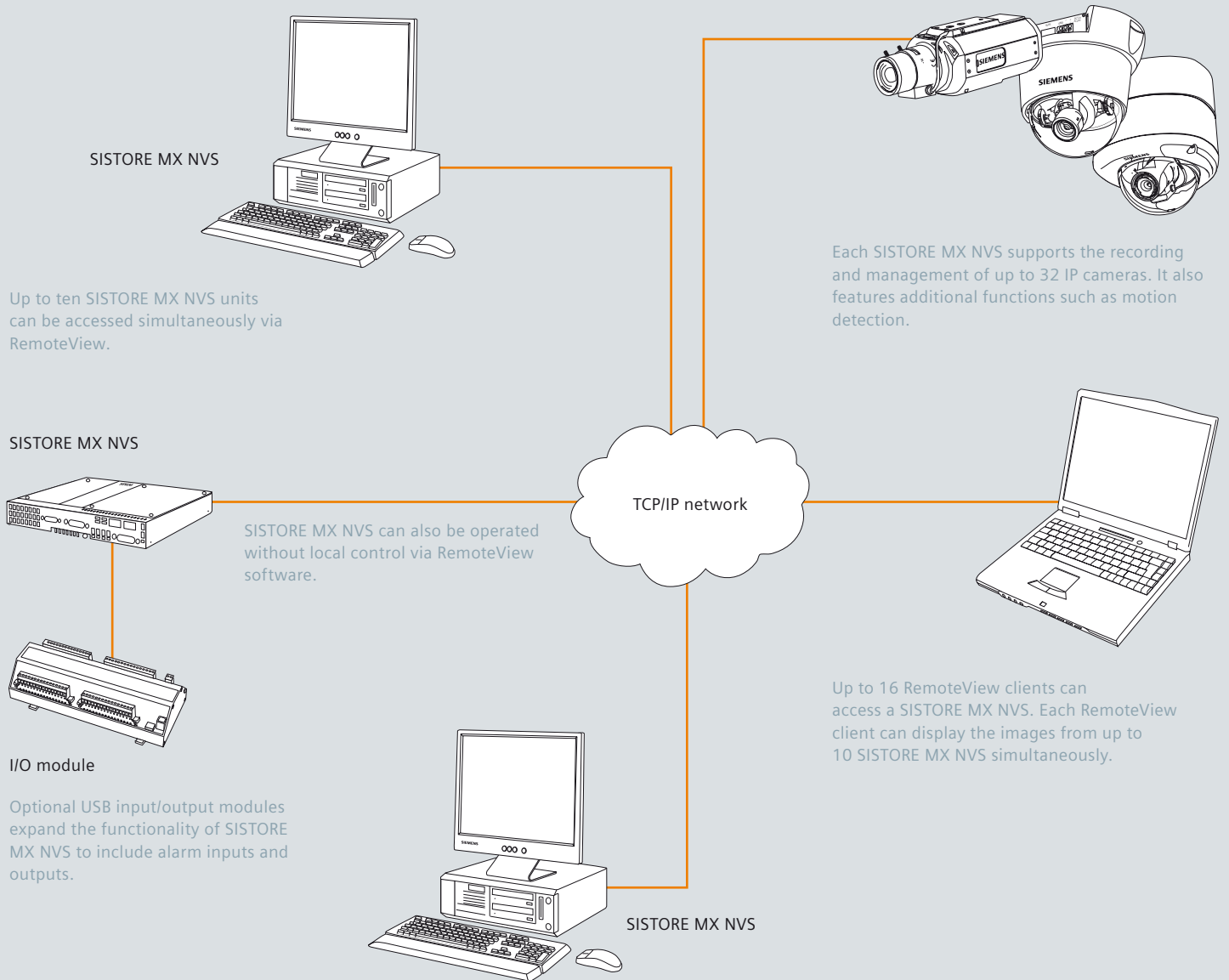
- Quick and easy to install
- Long-term and event-based recording
- Pentaplex operation
- Live image display & alarm scenarios
- User access management
- Various archiving options

The interactive site plan feature helps operators track suspicious activity.



Integrated motion detection feature





■ **Live image display & alarm scenarios**

In addition to recording, all cameras can be displayed for live monitoring. In addition SISTORE MX NVS allows the definition of alarm scenarios depending on time, date, alarm conditions etc. If an alarm is triggered, e.g. via the integrated motion detection or an external alarm input, a predefined alarm scenario executes. Thereby it is possible to zoom to a predefined image area

and start recording or to increase the recording rate of certain cameras, ensuring that the correct images are stored in the correct quality.

■ **User administration**

SISTORE MX NVS works with a uniquely designed user administration system. By assigning different user rights, each operator can be given access to certain functions, and declined access to others, depending on their particular duties.

■ **Export and archiving**

SISTORE MX NVS supports archiving, both of sequences on the local hard disk and shared networked drives. In addition archiving can be done using an external CD/DVD burner connected via USB.



SISTORE MX hardware for hybrid video surveillance

## Technical overview

### ■ Quick and easy searching

To ensure the fastest method of finding images, a mask can be defined in the area of interest, filtering the playback to only that area and ensuring no time is wasted watching hours of useless video. Also, there is the timeline search, showing all recorded images across the cameras, including showing movement detection, alarm triggers etc. – just drag the line to the time or date required – simple. Of course it is also possible to search according to standard criteria such as date, time, camera and alarm logbook.

### ■ Multiple user access (multi-client)

Up to 16 clients can access a SISTORE MX NVS simultaneously via the included RemoteView software.

### ■ Multi-server with simultaneous access

Together with the possibility of administering thousands of SISTORE MX NVS PCs, one RemoteView station allows simultaneous access to up to 10 SISTORE MX NVS PCs.

### ■ Integration of switching inputs and outputs via USB (optional accessory)

The SISTORE MX NVS can optionally be equipped with alarm inputs, from which recording can be started or speed adjusted. The digital inputs are reserved for specific alarm inputs e.g. UPS power failure, start/stop recording. The alarm outputs are designed to connect to alarm systems, turn on lights or trigger a loudspeaker pre-recording. It is also possible to record a single audio channel linked to a pre-defined camera.

### ■ Alarm action

In the event of an alarm, an automatic connection is established to the remote monitoring station via the RemoteView software. In addition, the operator receives an e-mail or text message informing of the alarm or system status, enabling necessary alarm procedures to then take place.

## Highlights

- Quick and easy searching
- Multiple user access
- Multi-server with simultaneous access
- Integration of switching inputs and outputs via USB
- Control possible using video software IVM

System requirements	SISTORE MX NVS Server	RemoteView/WebView/Demo operation
Version of operation system	Windows XP SP2	Windows XP SP2
Language of operation system	German or English	German or English
Display resolution	1024x768 or 1280x1024 Pixel	1024x768 or 1280x1024 Pixel
Colour depth	16 Bit	16 Bit
<b>Hardware</b>		
Processor	Intel Pentium 4	Intel Pentium 4
Speed	2.6 GHz or higher	2.6 GHz or higher
Random access memory	1024 MB RAM or more	512 MB RAM or more
File system	NTFS	NTFS
Free hard disk capacity	120 GB or more	60 GB or more
System partition C	10 GB or more	10 GB or more
Network archive	min. one network archive	

Technical Overview	SISTORE MX NVS4 SISTORE MX NVS9 SISTORE MX NVS16 SISTORE MX NVS32
<b>Display</b>	
Video inputs (digital IP/Ethernet)	■
Video resolution (HxV)	up to 1280x1024
<b>Alarms</b>	
Alarm inputs (optional)	8
Alarm inputs/outputs combined (optional)	16/16
Alarm outputs (optional)	8
Video loss detection	■
Activity detection	■
Alarm log	■
Sabotage detection	■
<b>Controls</b>	
Easy-search via mask or timeline	■
PTZ/dome control	■
Fast forward/rewind controls	x 0.1 to x 50 speed
Password protection	10 levels
<b>Connectivity</b>	
RemoteView Software (remote access)	■
IVM Video Management interface	■
SiPass access control interface	■
<b>Export/Backup</b>	
Image export	JPG or AVI via network
Image backup/archive (external software necessary)	via USB to CD/DVD burner

#### ■ Control via IVM video software (from IVM version 3.0)

SISTORE MX NVS can be controlled directly via IVM interactive video software from Siemens. The recorded images and event data can be played back and analysed, and full camera control can take place via any IVM client in the system network.

#### ■ SISTORE MX hybrid system

If analogue cameras are already installed in a system which is set to be upgraded with IP cameras in the future, then SISTORE MX, also available from Siemens, is the ideal choice. This hybrid video monitoring system enables the recording of images from both 32 analogue and 32 IP cameras, thereby also supporting seamless migration from analogue to digital. Further information on SISTORE MX can be found at [www.siemens.com/sistoremx](http://www.siemens.com/sistoremx).

# Answers for infrastructure.

## ■ Megatrends driving the future

The megatrends – demographic change, urbanization, climate change and globalization – are shaping the world today. These have an unprecedented impact on our lives and on vital sectors of our economy.

## ■ Innovative technologies to answer the toughest questions

Throughout a 160-year history of proven research and engineering talent, with more than 50,000 active patents, Siemens has continuously provided its customers with innovations in the areas of health-care, energy, industry and infrastructure – globally and locally.

## ■ Increase productivity and efficiency through complete building life cycle management

Building Technologies offers intelligent integrated solutions for industry, commercial and residential buildings and public infrastructure. Over the entire facility's life cycle, our comprehensive and environmentally conscious portfolio of products, systems, solutions and services in the fields of electrical installation technology, building automation, fire safety and electronic security, ensures the:

- optimum comfort and highest energy efficiency in buildings,
- safety and security for people, processes and assets,
- increased business productivity.



Siemens Switzerland Ltd  
Industry Sector  
Building Technologies Division  
International Headquarters  
Gubelstrasse 22  
6301 Zug  
Switzerland  
Tel +41 41 724 24 24  
Fax +41 41 724 35 22

Siemens Building Technologies  
A Division of Siemens Ltd (Australia)  
885 Mountain Hwy  
Bayswater, VIC, 3153  
Australia  
Tel +61 (0)3 9721 2000  
Fax +61 (0)3 9720 9966

Siemens Limited  
Building Technologies  
Units 1006-10  
10/F, China Resources Building  
26 Harbour Road  
Wanchai  
Hong Kong  
Tel +852 2870 7888  
Fax +852 2407 4457

Siemens Pte Limited  
Building Technologies  
The Siemens Center  
60 MacPherson Road  
348615  
Singapore  
Tel +65 6490 6000  
Fax +65 6490 6001

Siemens Building Technologies  
Security Products  
Brecon House  
Llantarnam Park  
Cwmbran  
NP44 3AB  
United Kingdom  
Tel +44 871 386 0800  
Fax +44 871 386 0888

The information in this document contains general descriptions of technical options available, which do not always have to be present in individual cases. The required features should therefore be specified in each individual case at the time of closing the contract.

Subject to change • Order no. A6V10061672 •  
© Siemens Switzerland Ltd • Printed in Switzerland • 20811 St/Ah