



CCTV

SISTORE MX – the hybrid video surveillance system





A new dimension of surveillance

SISTORE MX is a flexible, hybrid surveillance and image recording system that can be used in a multitude of applications. From banks and industrial facilities to train stations and shopping centres, the system is designed for all applications. SISTORE MX is ideal for integration with other security systems due to the numerous connection possibilities available. Integrated motion detection enables both indoor and outdoor surveillance.

Transportation system



Safe and secure into the future with Siemens' hybrid technology

■ Hybrid recording system with up to 64 camera inputs

Siemens hybrid technology unifies both analogue and digital technologies in a single system, therefore allowing a smooth upgrade of existing systems. With ten available models, up to 32 standard analogue cameras and 32 IP cameras can be connected, with various hard disk size, and DVD burning options.

■ Integration in other systems

Via the integrated software interface, SISTORE MX can be controlled by IVM, the interactive video management software, SiPass access control system, and MM8000, the danger management system from Siemens, to name but a few.

■ PTZ control for both speed dome cameras and pan/tilt devices

Both speed dome and pan/tilt/zoom cameras can be controlled via the on-screen interface of SISTORE MX. Preset positions can be set and recalled simply, together with setting patrols, where the camera moves from one preset position to another automatically and "patrols" the facility.

■ Support of third-party IP cameras including PTZ control

SISTORE MX can also be connected to third-party IP cameras that have already been installed and, if these are functional cameras, then SISTORE MX also supports PTZ control over a network.

■ Full "pentaplex" operation

SISTORE MX is a pentaplex system – one which enables the user to simultaneously continue to record, watch a live multi-

screen picture display whilst playing back previously recorded video scenes on the same monitor and remote viewing over a network or dialup connection.

■ Tamper protection and temperature management integrated

This hybrid recording system is equipped with integrated sabotage protection, recognising camera re-positioning, covering, spraying and defocusing. The integrated temperature management reduces maintenance time and cost, ensuring true system protection.

■ Site plan feature for easy orientation in the monitored area

Cameras positioned in a site plan can be displayed easily via mouse click. This feature helps operating personnel to track suspicious people for example, without having to remember the next camera number.

■ Certified as complying with the German Accident Prevention Regulations for Banks (UVV Kassen)

SISTORE MX is certified as complying with the German Accident Prevention Regulations for Banks (the highest certification standard in Germany), which is required by every bank.

■ "Kalagate" security certification

SISTORE MX is certified by the Kalagate Imagery Bureau. Based in England, Kalagate independently certifies digital equipment verifying that the captured and stored images are admissible as evidence in criminal and civil judicial courts of law.

Highlights

- Hybrid digital recording system with up to 64 camera inputs
- Records up to 200 images per second
- Integration with IVM, SiPass, MM8000
- Control of PTZ and dome cameras
- Support of third-party IP cameras including PTZ control
- Full pentaplex operation
- Tamper protection and temperature management integrated
- Site plan feature
- Certified as complying with the German Accident Prevention Regulations for Banks (UVV Kassen)
- Kalagate security certification for use as evidence in court
- New model with integrated DVD burner

Banks



Retail stores



Comprehensive features that are simple to operate

Flexible remote monitoring

In networked applications during an alarm condition, SISTORE MX can provide a direct link to the remote viewing software, to allow immediate access to the images over the network, or send SMS and if required an e-mail. This included RemoteView software can also perform a "site-tour" – automatically connecting and disconnecting to pre-defined remote sites allowing the operator to simply sit back and watch the tour on the monitor.

Basic matrix switching

It is possible to have a total of 4 analogue monitor outputs – these can be used to switch any of the 32 analogue cameras, creating a basic 32 x 4 switcher. Monitors can be programmed to act as alarm monitors and SISTORE MX will automatically switch cameras upon alarm activation.

Reference image

Benefiting both installers and end users is the facility to store a "reference image" of the installed camera – so should it be moved, maliciously or otherwise, or simply if it has to be serviced, there is an exact record of its viewing position.

Various different display options

With the connection of up to 64 cameras possible, multiple screen display options are provided to the user to ensure the optimum viewing conditions.

Motion detection

To optimise hard disk storage, the pixel-based motion detection system allows the user to define areas of interest in a scene and only when motion occurs

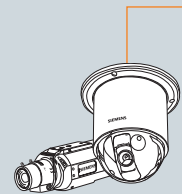
inside this area, will the images be recorded.

Covert camera mode

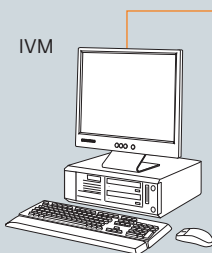
Any camera can be recorded, but not displayed depending upon the user level, so cameras monitoring cash registers could only be monitored by Managers for example.

Quick and easy searching

To ensure the fastest method of finding images, a mask can be defined in the area of interest, filtering the playback to only that area and ensuring no time is wasted watching hours of useless video. Also, there is the timeline search, showing all recorded images across the cameras, including showing movement detection, alarm triggers etc. – just drag the line to the time or date required – simple. Of course it is also possible to search according to standard criteria such as date, time, camera and logbook.



Up to 32 analogue cameras can be connected to the system; these can be a mixture of colour or mono, indoor or outdoor cameras, pan/tilt/zoom cameras, fixed cameras or speed dome cameras.

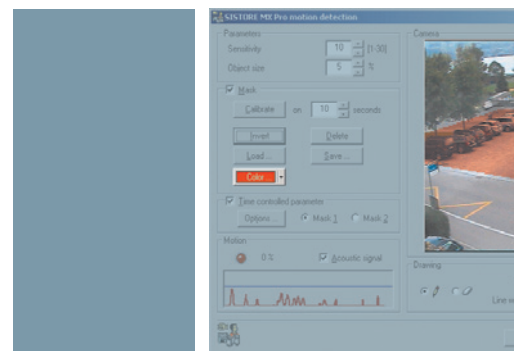


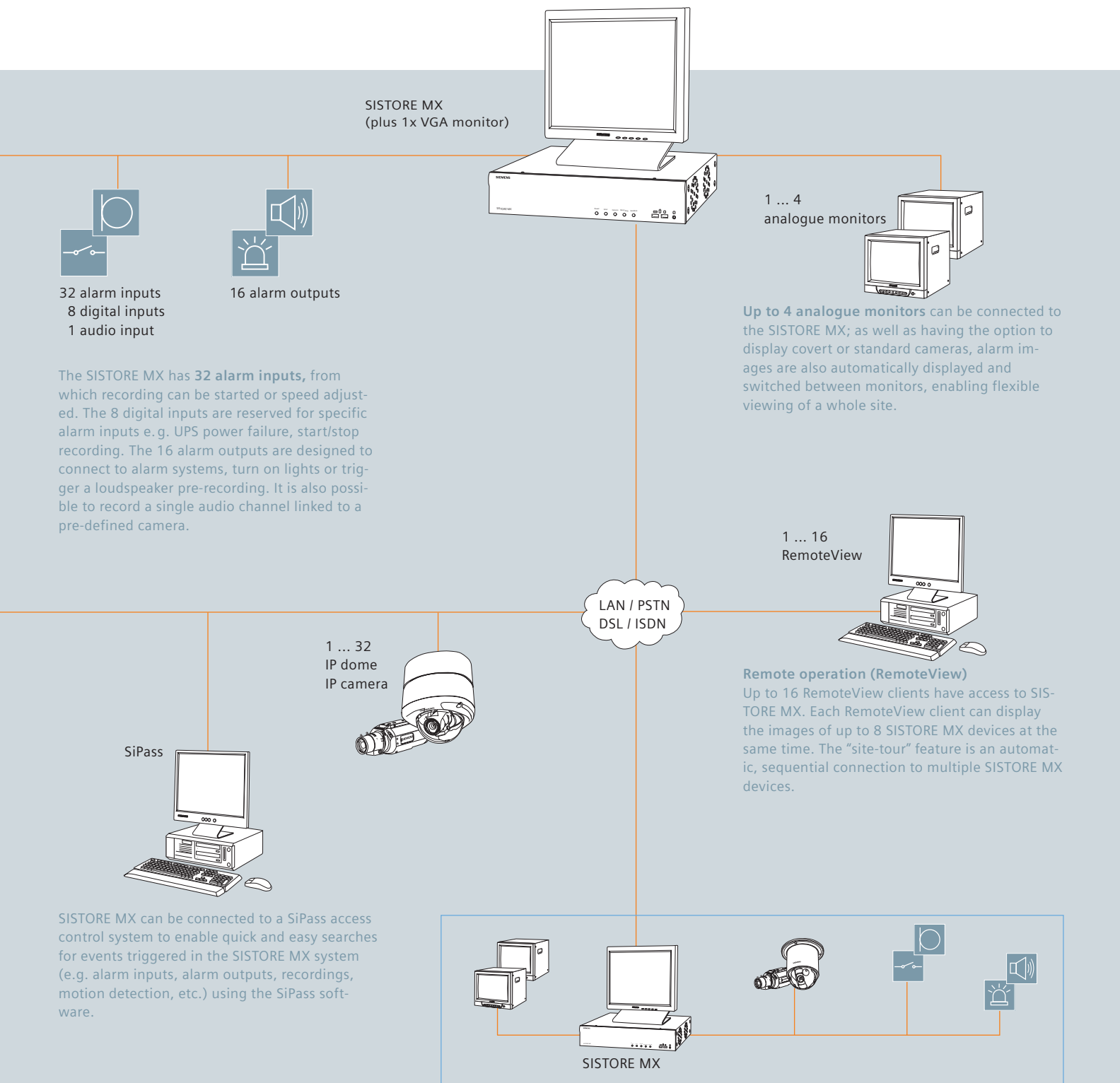
IVM (Interactive Video Software) for integrated control of video systems. This management system allows the operator to control a security system via the graphical user interface.

Various different display options

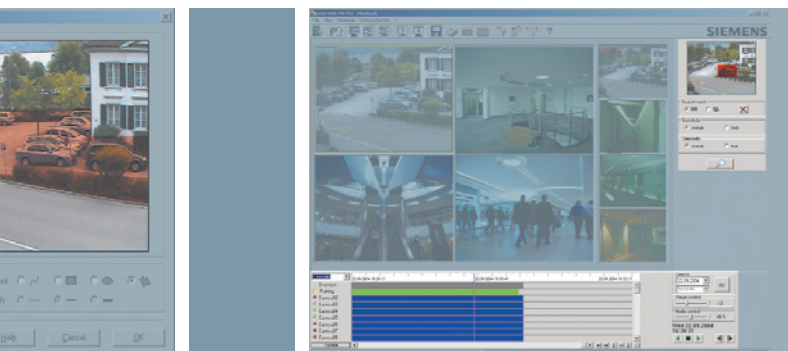


Motion detection





Quick and easy searching using timeline or filter.



Additional features provided by SISTORE MX



■ Site plan feature

It is always difficult to remember all camera numbers and positions. The new site plan feature of SISTORE MX provides a full visual overview of a facility. Site plans or photos of facilities can be loaded easily by adding the appropriate symbol for the camera position to the site plan. In addition to this, it is possible to add additional cards for individual rooms or floors and link these so as to be able to easily switch between rooms or floors. This is an important feature for operating personnel when tracking suspicious persons on the premises.

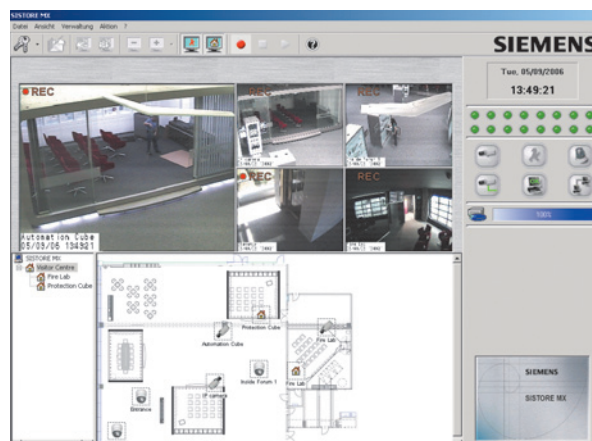
■ Cash register connection

The serial interface with which SISTORE MX is equipped can be used to connect various different cash register systems, therefore making the system suitable for use in retail stores, shopping centres etc. Recording can be initiated for a corresponding camera based on special word/line filters placed on the data sent from the cash register as well as defined alarm filters. The same filter words can then be used as search criteria for subsequent research.

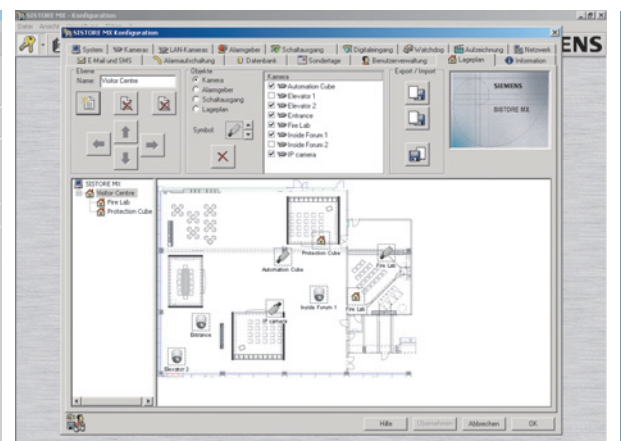
■ Automatic backup

SISTORE MX can automatically backup full or partial video and audio recordings on an external drive. The time and days of the week can be configured for backup. The user can choose whether to carry out full or incremental backup. As opposed to full backup, incremental backup is used to store all files that have been created since the last backup therefore requiring considerably less time and storage capacity on the target drive.

The site plan feature helps operating personnel track suspicious persons.



Simply add and position cameras on the site plan via drag and drop.



■ Multiple server operation

The new multiple server operation feature enables simultaneous access to several SISTORE MX devices from a remote operating station and therefore allows for monitoring several locations at the same time using RemoteView. Images from a specific camera are displayed by simply selecting the camera from the list. Up to 768 (8x96) cameras can be listed and live images from up to 36 (6x6) cameras can be displayed at once.

■ High image quality and recording speed

- Highest image quality
- Individually programmable recording speed for each camera
- Connect up to 32 IP cameras via the network for true digital recording, as well as standard analogue cameras via coaxial cable

■ Alarm

- Automatic connection to monitoring station with RemoteView software in case of alarm
- Notification (e.g. alarm, fault) via e-mail or SMS

■ Versatile recording settings

- Recording of alarm history, individually programmable for each camera
- Intelligent motion detection, individually programmable for each camera
- Flexible configuration via time control for all features
- AND link via digital inputs
- Audio recording with allocation to a specific camera
- Stored reference image which can be used to check the installed camera position
- Encrypted images for the most secure recording
- Viewing of cameras depending upon user password level (covert camera mode)

■ Various playback possibilities

- Playback overview via timeline, log book, date and time, or to enable filtered playback, via search mask (all available with RemoteView software)
- Synchronised playback of up to 4 cameras, including via LAN or ISDN




■ Remote operation using RemoteView software

- Simultaneous playback of up to 32 live images (multiplexed) using RemoteView
- Multiple clients can access a SISTORE MX device at the same time
- “Site-tour” feature, automatically connecting to and from remote locations
- Multiple servers on a single client
- Licence-free RemoteView software for network operation

■ Additional innovative features

- Various languages integrated
- Status display of digital outputs including via RemoteView
- Programmable bandwidth restriction for LAN and ISDN
- 4 USB ports for connecting external devices (e.g. CD/DVD burner)
- Watchdog feature for constant monitoring to ensure the safest systems
- SCSI port for connecting Siemens approved RAID systems
- Extensive user management features
- Flexible, user-friendly calendar management for public holidays, vacation time, etc.

Display
Video inputs (analogue)
Video inputs (digital IP / Ethernet)
Monitor outputs
Audio inputs / outputs
Video resolution (H x V)
Live display formats
Covert camera mode
Recording
Maximum recording speed – no local playback
Maximum recording speed – during local playback
Maximum recording speed – playback via RemoteView software
Recording schedules
Alarms
Alarm inputs
Digital inputs
Alarm outputs
Video loss detection
Activity detection
Internal buzzer
Alarm log
Sabotage detection
Controls
Easy-search via mask or timeline
PTZ / dome control
Fast forward / rewind controls
Password protection
Connectivity
Ethernet LAN/WAN connector (10/100 Mbps)
External modem connector (ISDN)
RemoteView software (license-free)
VSS-SDK / IVM / MM8000
SiPass access control interface
Export / Backup
Image export
Image backup / archive
Hard disk expansion possibility

MX4 250/50 MX8 250/50 MX16 500/50	MX16 500/100 MX24 500/100 MX32 750/100	MX3204 *250/150 DVD MX3208 250/200 DVD MX3216 500/200 DVD MX3232 1000/200 DVD
		
4 / 8 / 16	16 / 24 / 32	4 / 8 / 16 / 32
32	32	32
3 (2 x BNC, 1 x VGA)	5 (4 x BNC, 1 x VGA)	*3 (2 x BNC, 1 x VGA) 5 (4 x BNC, 1 x VGA)
1	1	1
704 x 288 (high) 384 x 288 (standard) 1280 x 1024 (IP megapixel)	704 x 288 (high) 384 x 288 (standard) 1280 x 1024 (IP megapixel)	704 x 288 (high) 384 x 288 (standard) 1280 x 1024 (IP megapixel)
1 (full screen), 2 x 2 (quad), 1 + 5, 3 x 3, 2 x 8, 4 x 9, 4 x 4, 6 x 6 - 4	1 (full screen), 2 x 2 (quad), 1 + 5, 3 x 3, 2 x 8, 4 x 9, 4 x 4, 6 x 6 - 4	1 (full screen), 2 x 2 (quad), 1 + 5, 3 x 3, 2 x 8, 4 x 9, 4 x 4, 6 x 6 - 4
■	■	■
50 ips – analogue cameras 100 ips – IP cameras	100 ips – analogue cameras 100 ips – IP cameras	100 ips – analogue cameras 100 ips – IP cameras
50 ips – analogue cameras 100 ips – IP cameras	100 ips – analogue cameras 100 ips – IP cameras	100 ips – analogue cameras 100 ips – IP cameras
50 ips – analogue cameras 100 ips – IP cameras	100 ips – analogue cameras 100 ips – IP cameras	100 ips – analogue cameras 100 ips – IP cameras
user-defined	user-defined	user-defined
16	32	*16 / 32
4	8	*4 / 8
8	16	*8 / 16
■	■	■
> 25,000 zones	> 25,000 zones	> 25,000 zones
■	■	■
■	■	■
■	■	■
■	■	■
■	■	■
x0,1 to x50 speed	x0,1 to x50 speed	x0,1 to x50 speed
9 levels	9 levels	9 levels
■	■	■
via USB	via USB	via USB
■	■	■
■	■	■
■	■	■
JPG, AVI, K26	JPG, AVI, K26	JPG, AVI, K26
USB to CD/DVD burner	USB to CD/DVD burner	Internal DVD burner
System harddisk plus up to 3 extensions	System harddisk plus up to 3 extensions	System harddisk plus up to 2 extensions



Complementing the range of models: SISTORE MX with DVD burner.

Welcome to the world of innovative thinking

■ Innovation

Siemens invests a great deal in both manpower and research and development. This results in a steady stream of new insights, technologies and inventions that enable us to improve the reliability of our products and systems, ensuring the securest products and making our systems even more simple and convenient to operate.

Advances in digital technologies are creating a whole new world of possibilities. Siemens is at the leading edge of progress in this field and continues to redefine both current and future technologies.

■ Reliability

With a history of over a hundred years, if you need an established, reliable partner you are in the very best of hands with Siemens. System expansions and upgrades can be continuously made over a period of years, which ensures your investment for the future.

■ Security

Siemens products and systems provide you with security. Today, tomorrow and for decades to come. That's why countless customers around the world place their trust in Siemens.



Siemens Switzerland Ltd
Building Technologies Group
International Headquarters
Gubelstrasse 22
6301 Zug
Switzerland
Tel +41 41 724 24 24
Fax+41 41 724 35 22

Siemens Building Technologies
A Division of Siemens Ltd (Australia)
885 Mountain Hwy
Bayswater, VIC, 3153
Australia
Tel +61 (0)3 9721 2000
Fax+61 (0)3 9720 9966

Siemens Limited
Building Technologies
Units 1006-10
10/F, China Resources Building
26 Harbour Road
Wanchai
Hong Kong
Tel +852 2870 7888
Fax+852 2407 4457

Siemens Pte Limited
Building Technologies
The Siemens Center
60 MacPherson Road
348615
Singapore
Tel +65 6490 6000
Fax+65 6490 6001

Bewator Limited
A Siemens Business
Brecon House
Llantarnam Park
Cwmbran
NP44 3AB
United Kingdom
Tel +44 (0)871 386 0800
Fax+44 (0)871 386 0888

The information in this document contains general descriptions of technical options available, which do not always have to be present in individual cases. The required features should therefore be specified in each individual case at the time of closing the contract.

Subject to change • Order no. A24205-A336-B500 • © Siemens Switzerland Ltd