

# SIEMENS

## IVM NT

Interactive Video Management System NT  
Software Package for Video Control Centers





# Interactive video management system NT

IVM NT is the software package for operation, visualization, parameterization and control of all video components in your video control center.



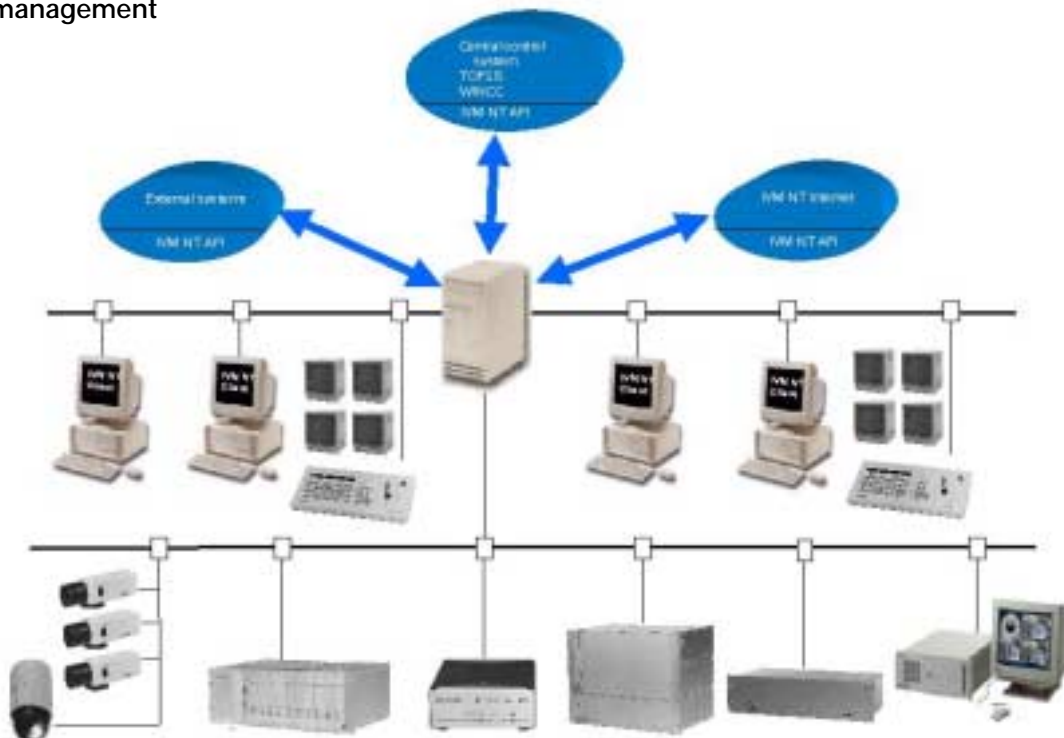
The simple, intuitive operating and linking facilities for all Windows applications mean that IVM NT is an open system and suitable for integration.

## Features of the IVM NT

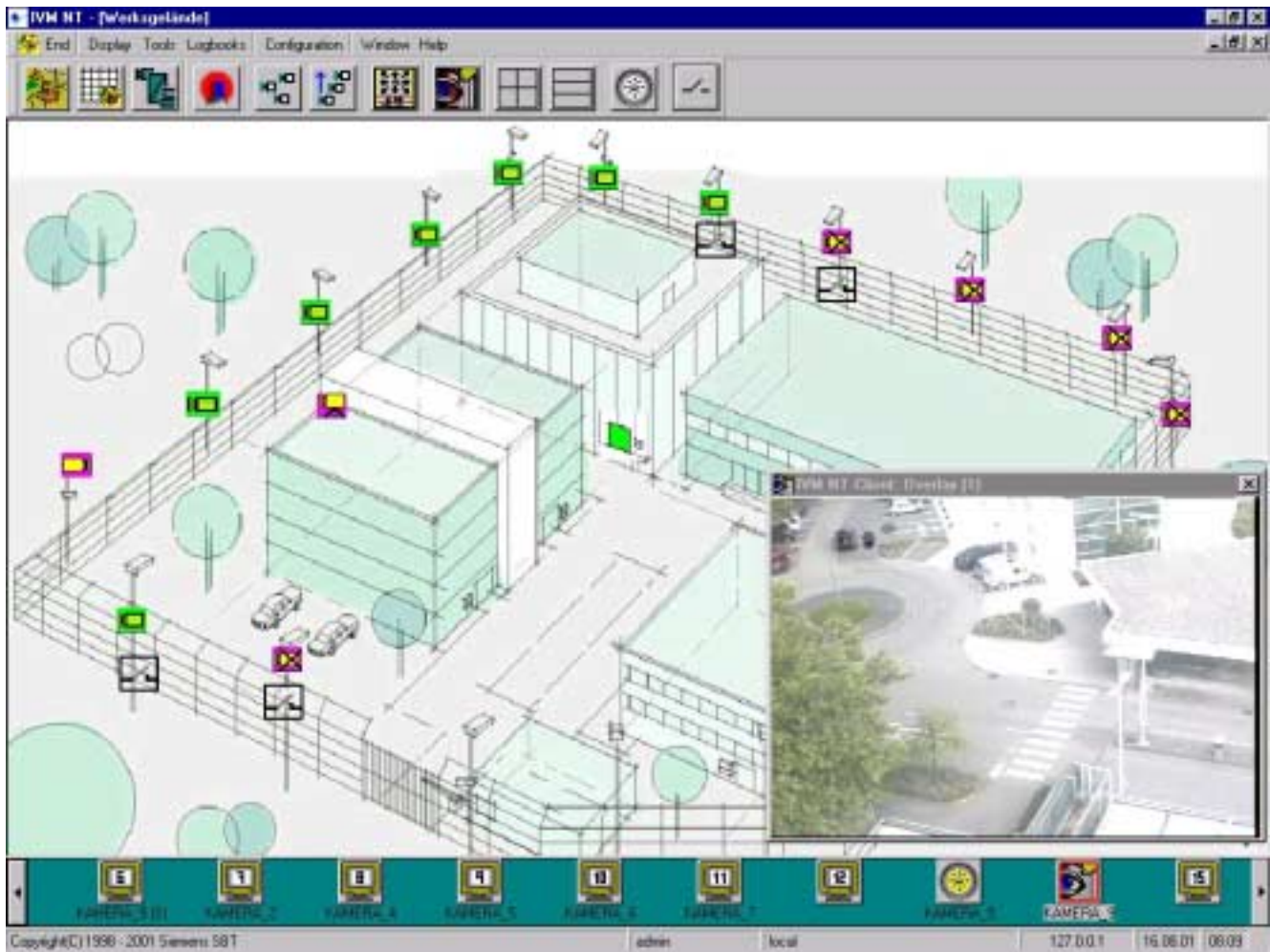
- Video control center as graphical PC terminal for operation, visualization, parameterization and control of the following video products:

Digital system video cameras	TELEMAT video sensor
SIMATRIX video matrix	TELSCAN digital video transmission system
SISTORE NT digital frame store	External systems

- Uniform, user-friendly, graphical user interface
- Efficient video monitoring with event control
- Modular design – universal applicability
- Client/server architecture – single-user and multi-user systems
- High flexibility with multi-user systems resulting from user-specific access privileges and alarm management



System configuration IVM NT



*Graphical user interface of an IVM NT video control center*

## Application

The visualization and recording of events is the current state-of-the-art for future-oriented security concepts. The pictures and data associated with an alarm permit the rapid initiation of measures appropriate to the situation. The complete video management can be implemented using **IVM NT**, covering the generation of site plans, parameterization, and the visualization, selection and control of individual video components or external systems.

Event-controlled messages, alarms or process information from associated systems can be visualized, evaluated and documented via serial interfaces and LAN using standardized protocols.

The unambiguous assignment of pictures provides the user with the following information on a message:

- Reason for message, from the recorded pictures and event data
- Development of danger, from the display of live pictures
- Picture and data documentation for the complete event

Application fields for video control centers:

- Object monitoring  
e.g. factory premises, prisons, public property, computer centers
- Logging of events  
e.g. access privileges, cash dispensers
- Recording of events  
e.g. haulage contractors/loading ramp, warehouse movements
- Process monitoring  
e.g. baggage conveyor belts, production control
- Traffic monitoring  
e.g. jam detection, traffic flows

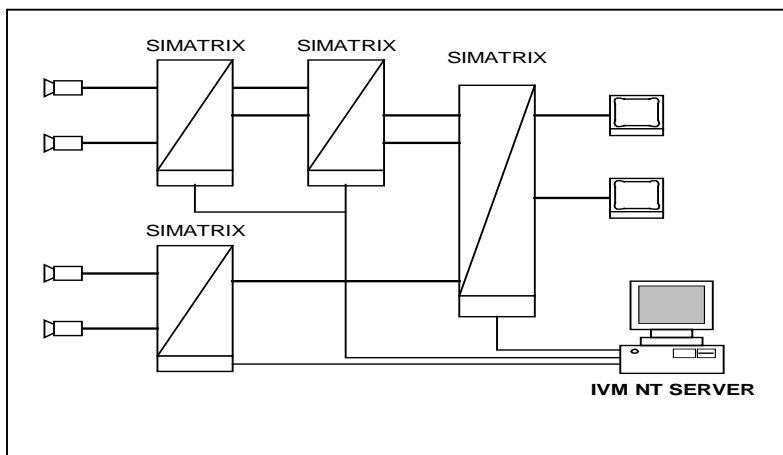
## Design

The IVM NT software package comprises the following components:

- IVM NT Server
- IVM NT Client
- IVM NT Config Tool
- IVM NT API
- ArchiveManager for SISTORE NT

### System characteristics

- Open system architecture
- Scaling of video components, users and alarms
- Database access via ODBC
- Optional server redundancy (interruption-free data integrity)
- Logbook function with stored event data and pictures
- Process optimization with time-controlled command processing
- Event-dependent control of video components
- User-based alarm processing in the network. The alarm is sent to the workstation on which the user has logged on.
- Cascading of transmission media (e.g. video matrices). The video connections between the cascaded video matrices are managed using priorities.



*Example of the cascading of video matrices*

### IVM NT Server (CCTV server)

The IVM NT Server software handles the control of all system components, the administration of user privileges, and alarm processing.

The following system components are integrated:

- Management and control of video matrices
- Management and control of keyboards/control units
- Management and control of TELEMAT video sensors
- Management and control of TELSCAN video transmission systems (ISDN public telephone network) and components for transmission on ATM/LAN networks
- Management and control of SISTORE NT (digital frame stores)
- Management and control of cameras

## IVM NT Client

The **IVM NT Client** software is the graphical user interface of your system with the following features:

- Individual, configurable user interfaces with several levels
- Access security using password levels and user profiles
- Interactive graphic selection and remote control via mouse/keyboard/input device
- Online language selection
- Graphic library for fast image configuring
- Live on-screen pictures
- Parameterizable scheduler functions
- Group switching, switching of sequences, and switching of group sequences
- Visualization following message, failure of video signal, camera switching etc.
- Operation and visualization of external systems, e.g. intrusion alarm system, WINCC, SICLIMAT
- **SISTORE NT tracing functions:**

The complete archive of all SISTORE NT systems can be searched through in the IVM NT Client, or the specific archive of a camera using the context menu. Various filter functions support convenient searching in the archive.



*Tracing using the context menu*

The ArchiveManager is used for the complete archive.

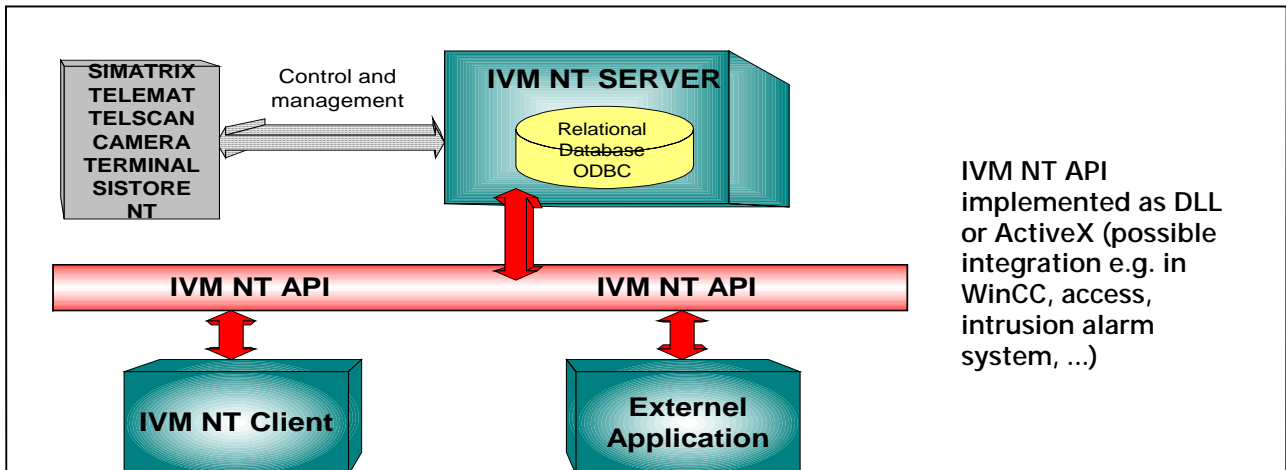
## IVM NT Config Tool

The **IVM NT Config Tool** is a graphical user interface for configuring your system and has the following features:

- Documentation of system data
- Individual telegram generation for communication (control) with external systems, can be operated from the IVM NT graphical user interface
- Parameterization of user profiles
- Terminals with switching assignment
- Alarm management

## IVM NT API

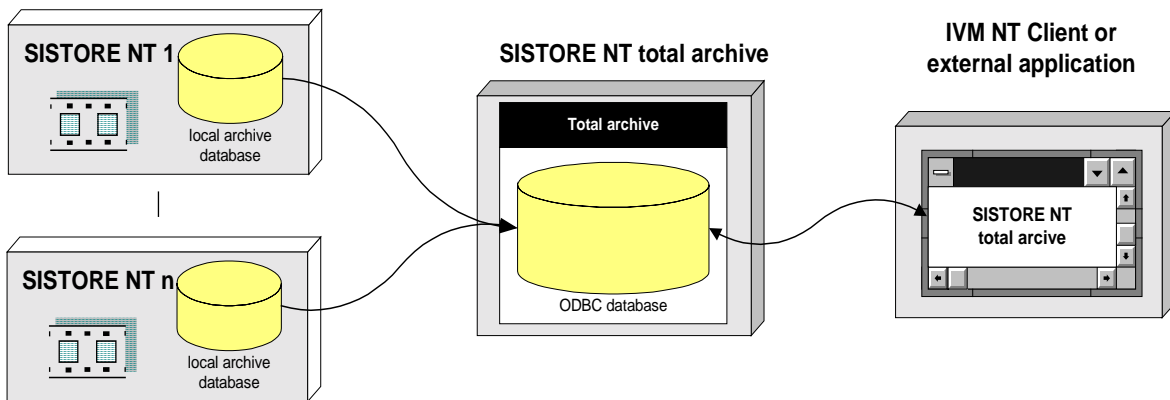
The **IVM NT API** is a standardized programming interface for generating own clients. The IVM NT client software is based on the **IVM NT API**. By connecting the **IVM NT API** and the database access via ODBC, the same functions are available in self-generated applications as in the **IVM NT Client**.



*Use of IVM NT API*

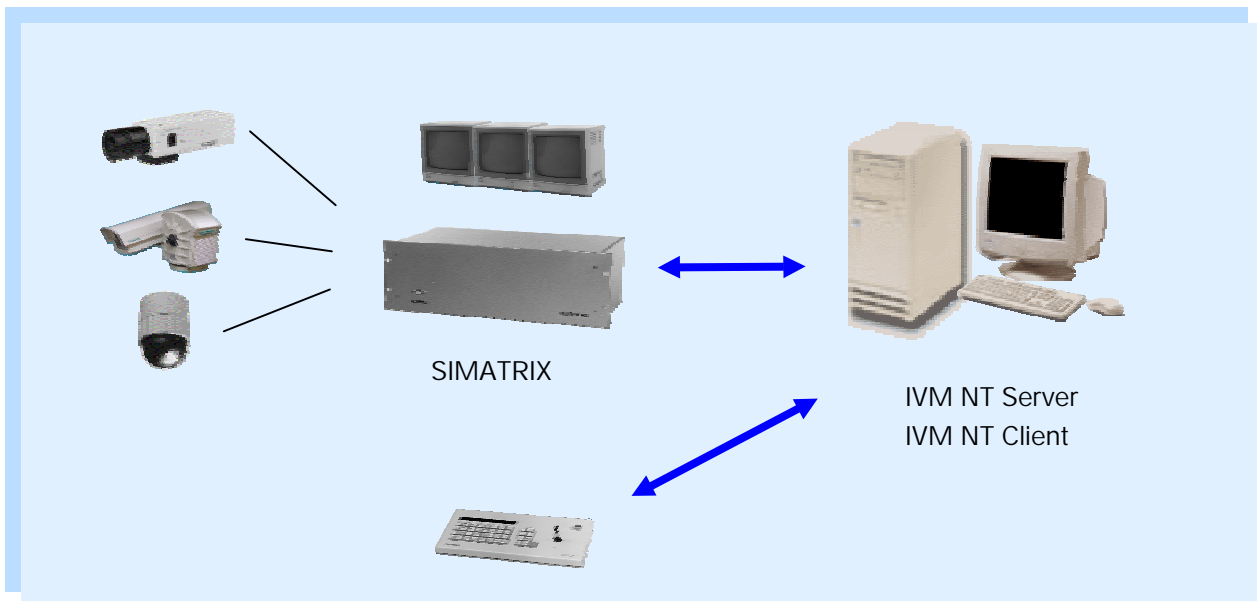
## ArchiveManager for SISTORE NT

The SISTORE NT ArchiveManager can be installed if several SISTORE NT systems are in use. The program is a utility under Windows NT which combines the archives of individual SISTORE NT systems into a total archive. This functionality is used in networked SISTORE NT and IVM NT systems. It provides the user with simple tracing within all SISTORE NT systems.



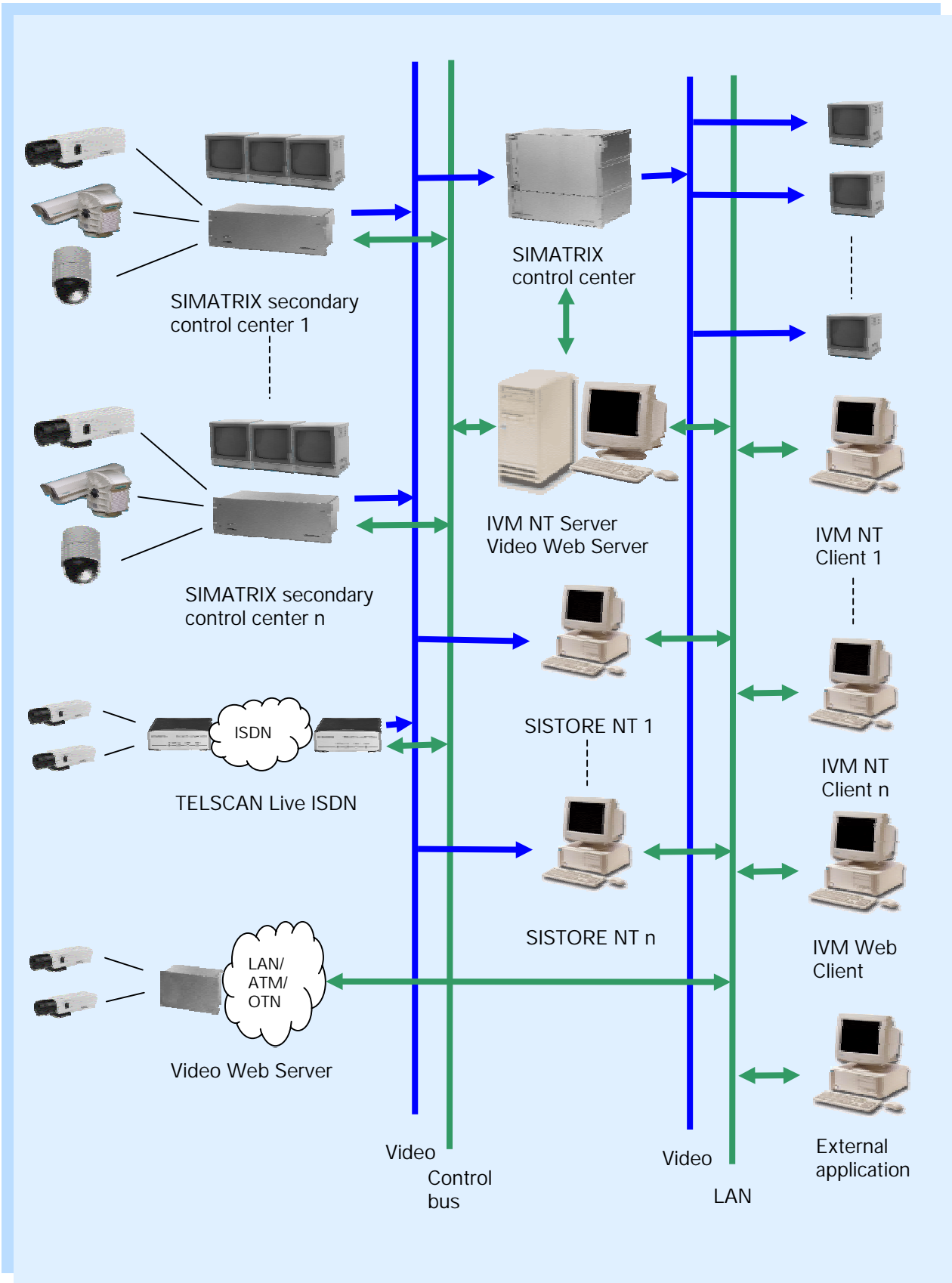
*Use of the SISTORE NT ArchiveManager*

## Application examples



*Example of a small CCTV system*





Example of a larger CCTV system

## Minimum hardware requirements for IVM NT

Recommendation:

Optimum utilization of the IVM NT system is guaranteed with a PC with the following system properties.

- Pentium III or better, at least 466 MHz
- At least 128 MB RAM; at least 256 MB RAM when using SQL server
- Graphics card VGA 1024\*768, 4 MB
- IVM NT video overlay card (option for the IVM NT Client)
- Hard disk 4.3 GB
- Diskette drive 3½ inch, 1.44 MB
- CD-ROM drive
- MF2 keyboard, mouse
- Windows NT 4.0 operating system, Service Pack 6
- At least 17-inch monitor for the IVM NT Client
- Network card

## Ordering data

Designation	Order No.
<b>Cerberus® COIB0801-NT</b> <b>IVM NT basic license for inputs/outputs: 64 / 8</b> incl. basic server license for IVM NT system and client with dongle for design of systems up to 64/8	<b>2GF9400-8FA</b>
<b>Cerberus® COIB1601-NT</b> <b>IVM NT basic license for inputs/outputs: 128 / 8</b> incl. basic server license for IVM NT system and client with dongle for design of systems up to 128/8	<b>2GF9400-8FL</b>
<b>Cerberus® COIB3202-NT</b> <b>IVM NT basic license for inputs/outputs: 255 / 16</b> incl. basic server license for IVM NT system and client with dongle for design of systems up to 255/16	<b>2GF9400-8FB</b>
<b>Cerberus® COIB3204-NT</b> <b>IVM NT basic license for inputs/outputs: 255 / 32</b> incl. basic server license for IVM NT system and client with dongle for design of systems up to 255/32	<b>2GF9400-8FC</b>
<b>Cerberus® COIB3208-NT</b> <b>IVM NT basic license for inputs/outputs: 255 / 64</b> incl. basic server license for IVM NT system and client with dongle for design of systems up to 255/64	<b>2GF9400-8FD</b>
<b>Cerberus® COIB3212-NT</b> <b>IVM NT basic license for inputs/outputs: 255 / 96</b> incl. basic server license for IVM NT system and client with dongle for design of systems up to 255/96	<b>2GF9400-8FE</b>
<b>Cerberus® COIB3216-NT</b> <b>IVM NT basic license for inputs/outputs: 255 / 128</b> incl. basic server license for IVM NT system and client with dongle for design of systems up to 255/128	<b>2GF9400-8FF</b>
<b>Cerberus® COIB6404-NT</b> <b>IVM NT basic license for inputs/outputs: 512 / 32</b> incl. basic server license for IVM NT system and client with dongle for design of systems up to 512/32	<b>2GF9400-8FG</b>
<b>Cerberus® COIB6408-NT</b> <b>IVM NT basic license for inputs/outputs: 512 / 64</b> incl. basic server license for IVM NT system and client with dongle for design of systems up to 512/64	<b>2GF9400-8FH</b>
<b>Cerberus® COIB6412-NT</b> <b>IVM NT basic license for inputs/outputs: 512 / 96</b> incl. basic server license for IVM NT system and client with dongle for design of systems up to 512/96	<b>2GF9400-8FJ</b>

<b>Cerberus® COIB6416-NT</b> <b>IVM NT basic license for inputs/outputs: 512 / 128</b> incl. basic server license for IVM NT system and client with dongle for design of systems up to 512/128	<b>2GF9400-8FK</b>
<b>Cerberus® COIS3001-NT</b> <b>IVM NT license per TELEMAT data concentrator</b> <b>medium</b>	<b>2GF9400-8GA</b>
<b>Cerberus® COIR2001-NT</b> <b>IVM NT license per SISTORE NT</b>	<b>2GF9400-8GB</b>
<b>Cerberus® COIC1001-NT</b> <b>IVM NT license per client</b> Client for expansion of an IVM NT system, incl. dongle	<b>2GF9400-8GC</b>
<b>Cerberus® COIT4001-NT</b> <b>IVM NT license per TELSCAN</b>	<b>2GF9400-8GE</b>
<b>Cerberus® CRD1111-NT</b> <b>IVM NT video overlay card (option)</b> Video card for live on-screen display	<b>2GF9400-8EA</b>
<b>Cerberus® COIB1111-NT</b> <b>IVM NT separate basic license dongle for client</b>	<b>2GF9400-8EB</b>

Products made in Germany.

## IVM NT licensing

Copy protection of the IVM NT system is achieved using a dongle. Enabling of the various configurations is achieved using a license file.

The basic license includes the IVM NT software package with an IVM NT Server and an IVM NT Client. If the IVM NT Client of the basic license is to execute on a computer other than the IVM NT Server, the separate basic license dongle (2GF9400-8EB) is required.

The number of inputs and outputs is independent of the number of video matrices.

IVM NT can be operated with two different database systems: with Microsoft Access or with Microsoft SQL Server. A Microsoft Access database is supplied, and guarantees fault-free operation up to the following configuration: 3 x IVM NT Client, 5 x video matrices, 1 x TELEMAT rack, 10 x TELSCAN transmitter, 1 x TELSCAN receiver, 5 x SISTORE NT.

In larger systems, we recommend use of the Microsoft SQL server for stability and performance reasons. The license costs for the Windows NT operating system and the Microsoft SQL server are not included in the IVM NT licenses.

Issued by SGS,  
CEVIS VIDEO SYSTEMS  
D-76181 Karlsruhe



This document may not be duplicated nor its  
contents used or communicated to others  
without express authority!  
Delivery subject to availability; right of technical  
modifications reserved.

**We are building security.**

---

**Siemens Gebäudesicherheit GmbH & Co. oHG**

**Order No. A24205-A336-B912**

Issue 16.11.01    CCTV PL-8    Dispo 32200  
PA 11012            E&B

Printed in the Federal Republic of Germany  
on environmentally-friendly chlorine-free paper