



## ASE5300-CB

SiPass®  
integrated

### CCTV third-party interface licence

[Insert "ShortDescription"]

- 
- **Integration of CCTV functionalities within SiPass integrated**
  - **Configuration and control of CCTV operations from SiPass integrated**
  - **Display of CCTV images directly from SiPass integrated**

This optional module allows you to upgrade your SiPass integrated client to a video surveillance workstation. The SiPass integrated CCTV third-party interface license provides an interface to a number of video surveillance systems. The settings and configurations for cameras and monitors are directly made from the SiPass integrated system. The image sequences can be displayed from the SiPass integrated graphical user interface (GUI) or a standard CCTV monitor. Using the event control function, it is possible to program camera sequences, which can then start automatically with a specific system event.

## Features

---



- Zoom (In / Out), Focus (Near / Far), Iris (Open / Close), Pan Tilt Speed
- Live image on-screen
- Ability to record, save and play presets and patterns directly from the SiPass integrated GUI
- Define monitors, cameras and auxiliaries
- View specific CCTV images in response to system alarms and other status changes
- Configurable event-task routines that generate CCTV activity
- CCTV actions directly from graphic maps
- The communication protocol to CCTV switcher can be customized from the SiPass integrated GUI.

## Description

---

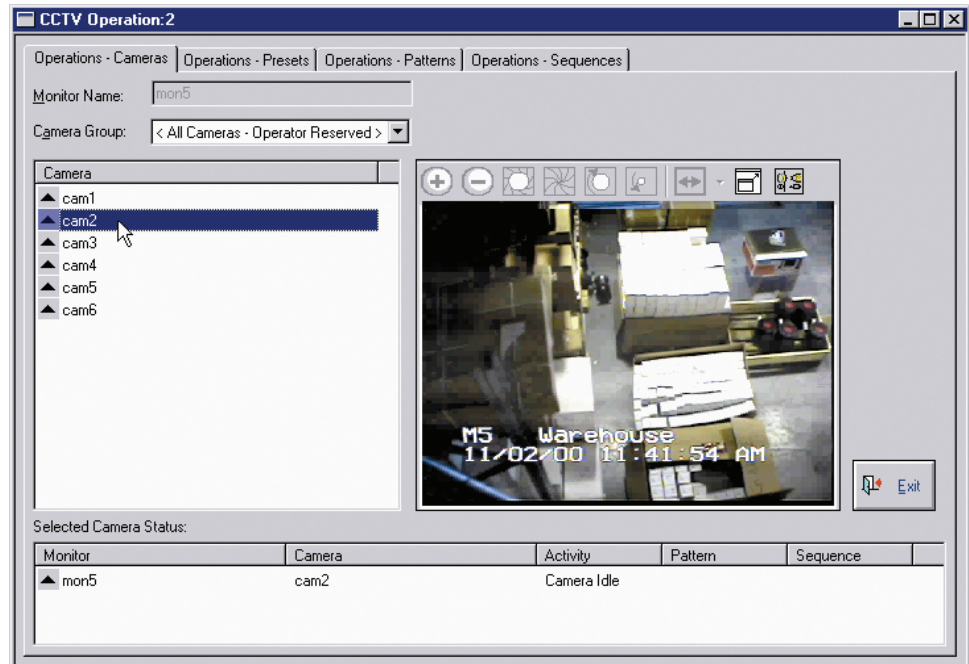
The SiPass integrated CCTV third-party interface seamlessly integratea CCTV operation within the SiPass integrated access control and security solution.

It allows you to interface with a range of CCTV systems and transforms your standard SiPass integrated client into an interactive CCTV station. This enables you to control the operation of CCTV components from the convenience of the SiPass integrated GUI.

Through the use of a video capture card, you can display high-quality CCTV images directly from the SiPass integrated GUI. You can also switch camera images to different monitors, create and view presets, patterns and sequences. When used in conjunction with the advanced alarm handling mechanism in SiPass integrated, you can display presets, patterns, or sequences on any monitor when the security at your facility has been breached.

Using the database partitioning in SiPass integrated, you can govern exactly which operators can use the CCTV functions and the level of control they have over each CCTV device.

To ensure that every facility using the CCTV third-party interface runs as efficiently as possible, CCTV actions can be run directly from graphical maps.



### CCTV GUI

Supported matrix switchers:

- Pelco 9760
- Pelco 9740
- Pelco CM6700
- Pelco CM6800

Note: Live images using the SiPass integrated GUI are dependent upon a Windows compatible video capture card being installed.

Note: Integration to Siemens SIMATRIX in a "no cost" option.

## System Requirements

---

One of the following core software packages is required:

Type	Part no	Designation
ASL5000-SE	6FL7820-8AA10	SiPass integrated Standard
ASL5000-OA	6FL7820-8AA20	SiPass integrated Optima

The following optional module is also required:

Type	Part no	Designation
ASE5300-CW	6FL7820-8AE01	CCTV capability on a SiPass integrated workstation license

## Details for ordering

---

To order the SiPass integrated software extensions, you must first complete a software license order form. Please contact your SiPass integrated supplier for further information.

Type	Part no	Designation
ASE5300-CB	6FL7820-8AE26	CCTV third-party interface licence

Issued by  
Siemens AB  
Security Products  
International Headquarters  
Englundavägen 7  
SE-171 24 Solna  
Tel. +46 8 629 0300

[www.siemens.com/securityproducts](http://www.siemens.com/securityproducts)

© 2011 Copyright by Siemens AB

Data and design subject to change without notice.  
Supply subject to availability.

---

Document no. **A24205-A335-B120**

Edition 19.10.2011