



## AR6181-MT, AR6182-MT

Access Control

### Card reader

to read ISO14443 Type A, like Mifare® and my-d proximity cards

- 13,56 MHz proximity reader technology
- RS-485 interface with CerPass / UCI reader protocol
- Clock/Data interface with Omron / Wiegand reader protocol
- Connection to SiPass, CerPass, or SIPORT

The AR6181-MT and AR6182-MT proximity readers in Square housing are part of the new Access reader range.

The readers are designed for Access Control applications using standard ISO14443A, Mifare® and my-d proximity cards, to read the unique card number or the personalised ID-number of Mifare® or my-d proximity cards.

The AR6181-MT and AR6182-MT (keypad version) reader can be connected to the door controller or the Reader Interface Module RIM to allow the operation with the access control systems **SiPass**, **CerPass**, or **SIPORT**.



Industrie Forum Design, Hannover  
**IF Design Award Winner 2001**



### AR6181-MT Card Reader (13,56 MHz)

- Transmission frequency 13,56 MHz
- Reads the unique serial number of standard ISO14443A, Mifare® and my-d proximity ID-cards (SLE55R04, SLE55R16, SLE66CL160S)
- Reads the personalised ID-number of Mifare® (data in sector/block) and und my-d proximity ID-cards (SLE55R04, SLE55R16; data in a public application)
- Up to 5 cm read range, depending on mounting environment<sup>1</sup>
- DIP-switch for functionality selection
- Flash-Memory for Firmware updates
- Three LED's, yellow, red and green, for status display and buzzer for audible signals
- ID-card reader can be connected to the Access Control System **SiPass**, **CerPass** and **SIPORT**
- Data transmission using 2-wire RS-485 partyline
- CerPass reader protocol (Reader address 1 to 8)
- UCI reader protocol (Reader address 1 to 4)
- Reader power from the power supply of the door controller
- "Touch and Go" operation



### AR6182-MT Card Reader with keypad (13,56 MHz)

- as per card reader AR6181-MT
- with additional keypad for PIN-code entry
- Keypad, 12 keys: 10 keys 0 – 9, C- and E-key
- CC30xx / DRI:
  - Keypad operation before card (card follows PIN)
  - or**
  - keypad operation after card (PIN follows card)
- AC4000:
  - Keypad operation before card (card follows PIN)

---

<sup>1</sup> Depending of the used Transponders (Size, Assembly) a decrease of the reader's range is possible.

## Compatibility

---

By use of the reader interface RS-485 with CerPass reader protocol.

	<b>CerPass</b> CC30xx	<b>SiPass</b> DRI	<b>SIPORT</b>		
			DC2000	AC4000	K24
<b>AR6181-MT</b>	✓	✓	✓ <sup>2</sup>	✓	-
<b>AR6182-MT</b>					

By use of the reader interface RS-485 with UCI reader protocol.

	<b>CerPass</b> CC30xx	<b>SiPass</b> DRI	<b>SIPORT</b>		
			DC2000	AC4000	K24
<b>AR6181-MT</b>	-	-	✓ <sup>2</sup>	✓	✓
<b>AR6182-MT</b>					

By use of the reader interface Clock/Data with Omron / Wiegand reader protocol.

**Important:** By using the Clock/Data reader interface the keypad is not supported.

	<b>CerPass</b> CC30xx	<b>SiPass</b> DRI	<b>SIPORT</b>		
			DC2000	AC4000	K24
<b>AR6181-MT</b>	✓ <sup>3</sup>	✓	✓ <sup>4</sup>	✓ <sup>4</sup>	✓ <sup>4</sup>
<b>AR6182-MT</b>					

## Installation

---

Recommended for wall installation with or without distance frame on even surface. Can also be installed in standard recess boxes DIN 49073. For installation and connection please follow the instructions of the operating manual.

<sup>2</sup> Keypad operates only with DC2000 Firmware-version above 2.0 !

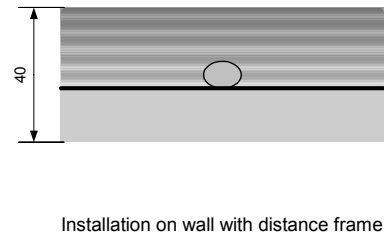
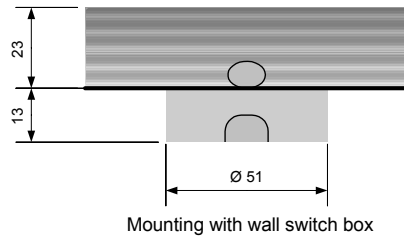
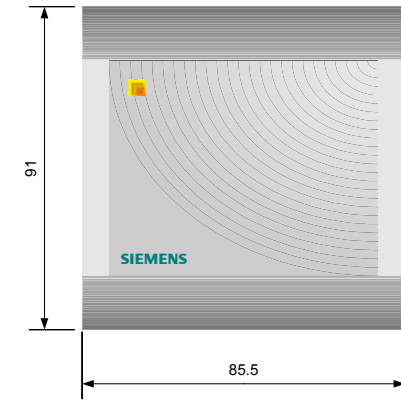
<sup>3</sup> Connection only via DCU3 door module (GBQ:524612) possible

<sup>4</sup> Connection only via UCI-Box (6FL7100-8HL) possible

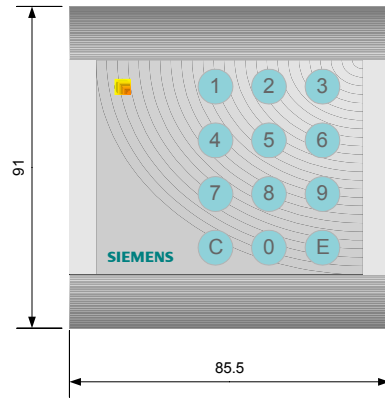
Dimensions (in mm)

---

AR6181-MT




AR6182-MT



## Technical data

---

<b>Power supply</b>	12-24 V DC/AC (10,2 – 27,6 V)
<b>Current consumption</b>	approx. 250 mA
<b>Interfaces</b>	
RS-485	CerPass / UCI reader protocol
Clock/Data	Omron / Wiegand reader protocol
<b>Operating temperature</b>	-20 to +60 °C
<b>Keypad</b>	
AR6181-MT	no
AR6182-MT	yes, > 1.000.000 operations
<b>Protection class</b>	IP65
<b>Standards</b>	
<b>Conforming</b>	to VDE 0830 i.e. separate door control unit with power supply, detached from the reader terminal
<b>Dimensions in mm (h x w x d)</b>	
Without distance frame	91 x 85,5 x 23
With distance frame	91 x 85,5 x 40
<b>Colour</b>	similar RAL9006, white aluminium
<b>Material</b>	PC / ABS plastic (injection moulding), varnish

## Details for ordering

---

Type	Part no	Designation	Weight
AR6181-MT	6FL7170-8AK	AR6181-MT - Identification card reader for ISO14443A; Mifare® and my-d proximity	0.15kg
AR6182-MT	6FL7170-8AL	AR6182-MT - Identification card reader with keypad for ISO14443A; Mifare® and my-d proximity	0.15kg
	6FL7195-3VU02-1DN0	ID-card Mifare®, white, blank, not personalised	

Issued by  
Siemens Building Technologies  
Fire & Security Products GmbH & Co. oHG  
D-76187 Karlsruhe

[www.sbt.siemens.com](http://www.sbt.siemens.com)

© 2004 Copyright by  
Siemens Building Technologies AG  
Data and design subject to change without notice.  
Supply subject to availability.

Printed in the Federal Republic of Germany  
on environment-friendly chlorine-free paper.

---

Document no. **A24205-A335-B071**

Edition 08.2004