

# TruVision™ Line IR cameras

## Standard-Res Fixed Lens Cameras

- TruVision™ Cam IR Bullet (TVC-BIR-SR)
- TruVision™ Dome IR (TVD-TIR-SR)

## Mid-Res Varifocal Lens Cameras

- TruVision™ Cam IR Bullet (TVC-BIR-MR)
- TruVision™ Dome IR (TVD-TIR-MR)

## High-Res Varifocal Lens Cameras

- TruVision™ Cam IR Bullet (TVC-BIR-HR)
- TruVision™ Dome IR (TVD-TIR-HR)



## Overview

The TruVision™ line from GE Security includes a comprehensive family of infrared (IR) cameras for stand-alone or basic integrated installations that are flexible and scalable to accommodate future growth. Ideal for surveillance system installations ranging from convenience stores to retail mall parking lots, the TruVision IR line has the right cameras for your job and can help you stay within budget constraints without compromising security needs.

These flexible cameras can see in total darkness, providing color images by day and black-and-white images under IR operation in low-light applications. Form factors include omni-directional dome and traditional bullet cameras. Dome models allow for ceiling or wall mounting while still maintaining a level field of view. Single gang adaptor plates are included with the MR and HR dome models, while the bullet models offer a familiar form factor that can also be ceiling or wall mounted. TruVision IR dome and bullet cameras are also available in fixed lens and varifocal lens models.

Best of all, the TruVision IR line of cameras is backed by a two-year warranty, valid from the original purchase date. For superior quality and performance, GE Security delivers the level of products you expect from a leader in the video surveillance market.

## Standard Features

- Balanced IR illumination for optimal viewing in low- to no-light environments
- Dome and bullet form factors provide flexible installation options and ensure the right camera for the job
- Up to IP67 ratings for weather-resistant performance (depending on model)
- Flexible resolutions from 380 TVL to 530 TVL so you can choose the level of performance required for the job
- Varifocal and fixed lens options available
- Compatible with all analog CCTV recording devices and equipment

## Application

Built for long-lasting service and plug-and-play functionality, the TruVision IR line provides a value-based solution that is ideal for applications ranging from residential to office buildings.

Designed for low-light and complete-darkness environments, TruVision cameras' balanced IR capabilities and multiple resolution options offer the perfect camera for each situation. With weather-resistant options that are well suited for indoor and outdoor applications, TruVision cameras represent sensible, secure video surveillance you can depend on.

## TruVision IR Cameras Application Matrix

GE SKU	TVC-BIR-SR	TVD-TIR-SR	TVC-BIR-MR	TVD-TIR-MR	TVC-BIR-HR	TVD-TIR-HR
<b>Recommended Use*</b>						
<b>Residential</b>	Outdoor	Indoor	Outdoor	Indoor		Indoor
<b>Retail</b>	Outdoor	Indoor	Outdoor	Indoor		Indoor
<b>Office building</b>	Outdoor	Indoor	Outdoor	Indoor	Outdoor	Indoor
<b>School</b>		Indoor		Indoor		Indoor
<b>Parking lot</b>			Outdoor		Outdoor	

\*Although recommended use is indoor, TruVision™ IR Domes (TVD-TIR-SR, TVD-TIR-MR, TVD-TIR-HR) are rated IP66 and above and can be used in outdoor applications if desired.



North America  
T 503-885-5700  
T 888-GE-SECURITY  
888-437-3287

Asia  
T 852-2907-8108  
F 852-2142-5063

Australia  
T 61-3-9239-1200  
F 61-3-9239-1299

Europe  
T 32-2-725-11-20  
F 32-2-721-40-47

Latin America  
T 305-593-4301  
F 305-593-4300

gesecurity.com

Specifications subject to change without notice.

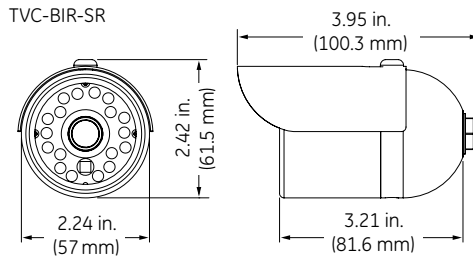
© 2008 General Electric Company  
All Rights Reserved



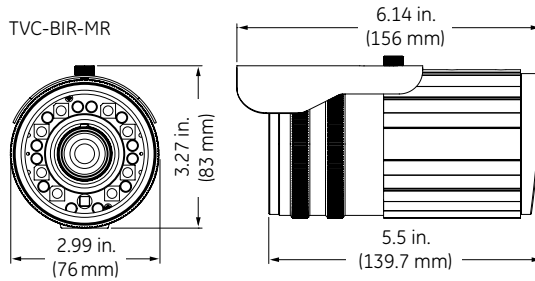
In 2008 GE Security was named the North American Video Surveillance Solutions Company of the Year by Frost & Sullivan.

## Dimensional Diagrams

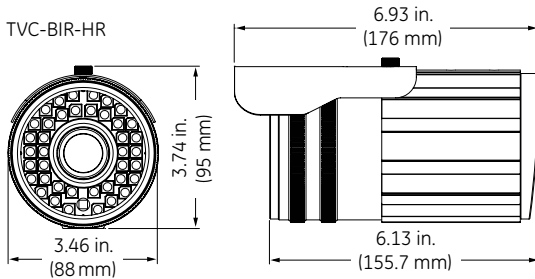
TVC-BIR-SR



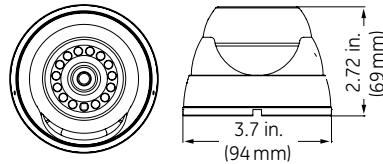
TVC-BIR-MR



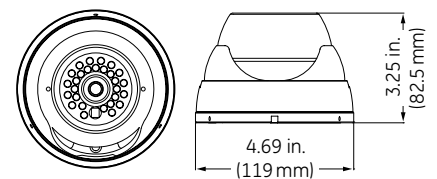
TVC-BIR-HR



TVD-TIR-SR



TVD-TIR-MR/TVD-TIR-HR



## Ordering Information

### NTSC

TVC-BIR-SR	TruVision™ Cam IR Bullet Standard-Res Camera, 380 TVL Color, 4.3 mm Fixed Lens, 49.2 ft./15 m IR Range, 12VDC only
TVD-TIR-SR	TruVision Dome IR Standard-Res Camera, 380 TVL Color, 4.3 mm Fixed Lens, 32.8 ft./10 m IR Range, 12VDC only
TVC-BIR-MR	TruVision Cam IR Bullet Mid-Res Camera, 480 TVL Color, 3.5–12 mm Varifocal Lens, 82 ft./25 m IR Range, 24VAC/12VDC
TVD-TIR-MR	TruVision Dome IR Mid-Res Camera, 480 TVL Color, 3.5–8.0 mm Varifocal Lens, 65.6 ft./20 m IR Range, 12VDC only
TVC-BIR-HR	TruVision Cam IR Bullet High-Res Camera, 530 TVL Color, 6.0–50.0 mm Varifocal Lens, 180.4 ft./55 m IR Range, 24VAC/12VDC
TVD-TIR-HR	TruVision Dome IR High-Res Camera, 530 TVL Color, 3.5–8.0 mm Varifocal Lens, 65.6 ft./20 m IR Range, 12VDC only

### PAL

TVC-BIR-SR-P	TVC-BIR-SR-P
TVD-TIR-SR-P	TruVision Dome IR Standard-Res Camera, 380 TVL Color, 4.3 mm Fixed Lens, 32.8 ft./10 m IR Range, 12VDC only, PAL
TVC-BIR-MR-P	TruVision Cam IR Bullet Mid-Res Camera, 480 TVL Color, 3.5–12 mm Varifocal Lens, 82 ft./25 m IR Range, 24VAC/12VDC, PAL
TVD-TIR-MR-P	TruVision Dome IR Mid-Res Camera, 480 TVL Color, 3.5–8.0 mm Varifocal Lens, 65.6 ft./20 m IR Range, 12VDC only, PAL
TVC-BIR-HR-P	TruVision Cam IR Bullet High-Res Camera, 530 TVL Color, 6.0–50.0 mm Varifocal Lens, 180.4 ft./55 m IR Range, 24VAC/12VDC, PAL
TVD-TIR-HR-P	TruVision Dome IR High-Res Camera, 530 TVL Color, 3.5–8.0 mm Varifocal Lens, 65.6 ft./20 m IR Range, 12VDC only, PAL

### Accessories

TVC-BIR-WM	Wall Mount Bracket for TruVision Cam IR Bullet Cameras
------------	--



imagination at work