

TM16Z7516N $f = 7.5\text{-}120\text{mm}$ F/1.6 3-Motors

TM16Z7516NPN $f = 7.5\text{-}120\text{mm}$ F/1.6 3-Motors with Preset(Zoom/Focus)

SPECIFICATIONS

MODEL No.		TM16Z7516N / TM16Z7516NPN
IMAGE FORMAT		1/2"
FOCAL LENGTH		7.5 - 120mm
APERTURE		F1 : 1.6
APERTURE RANGE		F1.6 - Close
ANGLE OF VIEW () = 1/3"	DIAGONAL	W55.49° - T4.01° (W42.68° - T3.01°)
	HORIZONTAL	W45.35° - T3.22° (W34.49° - T2.41°)
	VERTICAL	W34.49° - T2.41° (W26.03° - T1.81°)
M. O. D.		1.5m
BACK FOCAL LENGTH		12.8mm
FILTER SIZE		M72mm P=0.75
DIMENSIONS		W80.0 X H98 X L142.5mm
WEIGHT		980g
OPERATING TEMPERATURE		-20°C ~ 60°C
MOUNT		C-Mount

IRIS/ZOOM/FOCUS Controls	IRIS	ZOOM	FOCUS
INPUT VOLTAGE	DC+6 ~ +12V	DC+6 ~ +12V	DC+6 ~ +12V
CURRENT CONSUMPTION	Max. 30mA	Max. 60mA	Max. 60mA
MOTORIZATION SPEED	Approx. 4.5 sec.	Approx. 6 sec.	Approx. 7 sec.

CABLE CONNECTION

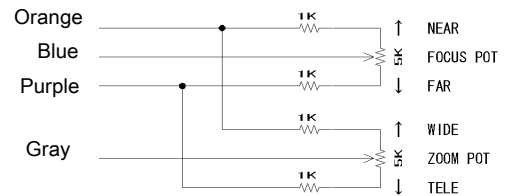
IRIS/ZOOM/FOCUS

FUNCTION	CABLE COLOR	POLARITY	DIRECTION
IRIS	YELLOW	+ (-)	Open (Close)
	BROWN	- (+)	
ZOOM	GREEN	+ (-)	Wide (Tele)
	WHITE	- (+)	
FOCUS	BLACK	+ (-)	Inf. (Near)
	RED	- (+)	

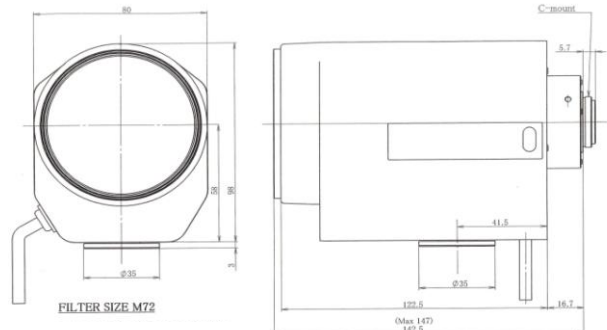
POTENTIOMETER-PRESET (TM16Z7516NPN Only)

CABLE COLOR	CONNECTION
ORANGE	Pot. Supply
BLUE	Focus Pot. Wiper
PURPLE	Pot. Return
GRAY	Zoom Pot. Wiper

* Potentiometer Resistance : 5KΩ (±20%) 0.19W
 Wiring details for potentiometer-preset



APPERANCE



*Design and specifications are subject to change without notice.