

SPECIFICATIONS

PREMIER 888 & PREMIER 8168 ENDSTATIONS

ELECTRICAL

Current Consumption
Quiescent current <50mA, Alarm <150mA
Fuses:
Mains 230Vac 125mA, 250V, 20mm
Battery 1.6A, 250V, 20mm
Auxiliary 1A, 250V, 20mm
External Sounder 1A, 250V, 20mm
Network 1 1A, 250V, 20mm
Network 2 1A, 250V, 20mm (Premier 8168 only)

Zones:

8 on board, fully programmable (DP or EOL)
EOL resistor value 2k2 (EOL) and 4k7 (contact)

Panel Outputs:

O/P 1 - 2 switched negative @ 500mA
O/P 3 - 4 switched positive @ 500mA
O/P 5 relay, contacts rated @ 3A
Communicator O/P 1 - 8 switched negative @ 100mA

External Sounder:

Switched negative @ 500mA for bell
Switched negative @ 500mA for strobe

Network:

4-wire connection including power (standard 7/0.2 alarm cable)
Up to 8 remote keypads and 8 zone expanders (Premier 888)
Up to 16 remote keypads and 16 zone expanders (Premier 8168)

POWER SUPPLY

Maximum Total Current Rating 1.5A, Ripple <5%
Rechargeable Battery Capacity 12V 7.0Ah to 17Ah

ENVIRONMENTAL

Operating Temperature -10°C (+14°F) to +45°C (+113°F)
Storage Temperature -20°C (-4°F) to +60°C (+140°F)
Maximum Humidity 95% non-condensing

EMC Environment Residential/Commercial/Light Industrial or Industrial

PHYSICAL

Case 1.2mm mild steel
Dimensions 305mm x 405mm x 100mm
Battery Compartment Space for up to one 12V 17Ah battery

PREMIER LCD & PREMIER LCDL REMOTE KEYPADS

ELECTRICAL

Operating Voltage 13.7Vdc nominal, 9.0Vdc minimum
Current Consumption 35mA nominal, 85mA when back lit
Network 4-wire up to 500m, Star, Daisy Chain or any combination (standard 7/0.2 alarm cable)
Number of Keypads 8 (Premier 888), 16 (Premier 8168)

ENVIRONMENTAL

Operating Temperature -10°C (+14°F) to +45°C (+113°F)
Storage Temperature -20°C (-4°F) to +60°C (+140°F)
Maximum Humidity 95% non-condensing

EMC Environment Residential/Commercial/Light Industrial or Industrial

PHYSICAL

Dimensions 140mm x 115mm x 30mm

BEST MANUFACTURER 2000

INTRUDER ALARM MANUFACTURER of the YEAR 2000

BEST MANUFACTURER 1999

1st For offering the best quality products at the right prices

1st For reliability & responsiveness

1st For excellence in customer care & service

1st For providing a high level of support & servicing including training & help lines

Premier 888
Premier 8-168

PREMIER XP8 ZONE EXPANDER

ELECTRICAL

Operating Voltage 13.7Vdc nominal, 9.0Vdc minimum
Current Consumption 65mA nominal, 320mA in alarm with 16Ω speaker
Network 4-wire up to 500m, Star, Daisy Chain or any combination (standard 7/0.2 alarm cable)
Number of Expanders 8 (Premier 888), 16 (Premier 8168)

ENVIRONMENTAL

Operating Temperature -10°C (+14°F) to +45°C (+113°F)
Storage Temperature -20°C (-4°F) to +60°C (+140°F)
Maximum Humidity 95% non-condensing
EMC Environment Residential/Commercial/Light Industrial or Industrial

PHYSICAL

Dimensions 170mm x 140mm x 33mm

PREMIER OP16 OUTPUT MODULE

ELECTRICAL

Operating Voltage 13.7Vdc nominal, 9.0Vdc minimum
Current Consumption 65mA nominal
Network 4-wire up to 500mA, Star, Daisy Chain or any combination (standard 7/0.2 alarm cable)
Number of Output Modules 4 (Premier 888), 8 (Premier 8168)

ENVIRONMENTAL

Operating Temperature -10°C (+14°F) to +45°C (+113°F)
Storage Temperature -20°C (-4°F) to +60°C (+140°F)
Maximum Humidity 95% non-condensing

EMC Environment Residential/Commercial/Light Industrial or Industrial

PHYSICAL

Dimensions 170mm x 140mm x 33mm

PREMIER Com300 & PREMIER Com2400 DIGIMODEMS

ELECTRICAL

Operating Voltage 13.7Vdc nominal, 9.0Vdc minimum
Current Consumption Quiescent current <10mA, Active <35mA
Protocols Fast Format (Scancom), Contact ID, SIA Level II and pager
Telephone Numbers 3 up to 24 digits each
Dialling Formats DTMF or Pulse

Approval

CTR21

REN Value

ENVIRONMENTAL

Operating Temperature -10°C (+14°F) to +45°C (+113°F)
Storage Temperature -20°C (-4°F) to +60°C (+140°F)
Maximum Humidity 95% non-condensing

EMC Environment Residential/Commercial/Light Industrial or Industrial

PHYSICAL

Dimensions 100mm x 63mm x 20mm

P C - C O M

ELECTRICAL

Operating Voltage 13.7Vdc nominal, 9.0Vdc minimum
Current Consumption 25mA nominal

ENVIRONMENTAL

Operating Temperature -10°C (+14°F) to +45°C (+113°F)
Storage Temperature -20°C (-4°F) to +60°C (+140°F)
Maximum Humidity 95% non-condensing

EMC Environment Residential/Commercial/Light Industrial or Industrial

PHYSICAL

Dimensions 72mm x 45mm x 30mm

EUROPEAN STANDARDS

Conforms to European Union (EU) Low Voltage Directive (LVD) 73/23/EEC (amended by 93/68/EEC) and Electro-Magnetic Compatibility (EMC) Directive 89/336/EEC (amended by 92/31/EEC and 93/68/EEC). EN 50131-1 Grades 1 and 2.

The CE mark indicates that this product complies with the European requirements for safety, health, environmental and customer protection.



Certificate Number: FM 35285

EASEM

BSIA

British Security Industry Association



P888/8168.EU1

Premier 888

Premier 8-168

CONTROL PANELS WITH PLUG-ON DIGIMODEM



THANK YOU FOR VOTING TEXECOM



The Premier 888 and Premier 8168 have been designed to provide advanced security protection for medium to large sized installations, where communication of system events is a priority. Both panels have a wide range of features including a plug-on multi protocol digital communicator/modem, full upload/download, completely independent areas, time and date stamped log and fully programmable User codes. Two types of LCD keypads are available: the Premier LCD keypad is designed for use where a standard size display is required, whereas the Premier LCDL keypad can be used when a larger display and speaker connectivity to the keypad is necessary.

Premier 888 outstanding features include:

- ✓ 8 TO 88 FULLY PROGRAMMABLE DP OR EOL ZONES
- ✓ 13 TO 93 FULLY PROGRAMMABLE OUTPUTS
- ✓ 8 AREAS EACH WITH SEPARATE ENTRY/EXIT & BELL TIMERS
- ✓ 1000 EVENT LOG (TIME & DATE STAMPED)
- ✓ 50 FULLY PROGRAMMABLE 4, 5 OR 6 DIGIT USER CODES

Premier 8168 outstanding features include:

- ✓ 8 TO 168 FULLY PROGRAMMABLE DP OR EOL ZONES
- ✓ 13 TO 173 FULLY PROGRAMMABLE OUTPUTS
- ✓ 16 AREAS EACH WITH SEPARATE ENTRY/EXIT & BELL TIMERS
- ✓ 2000 EVENT LOG (TIME & DATE STAMPED)
- ✓ 100 FULLY PROGRAMMABLE 4, 5 OR 6 DIGIT USER CODES

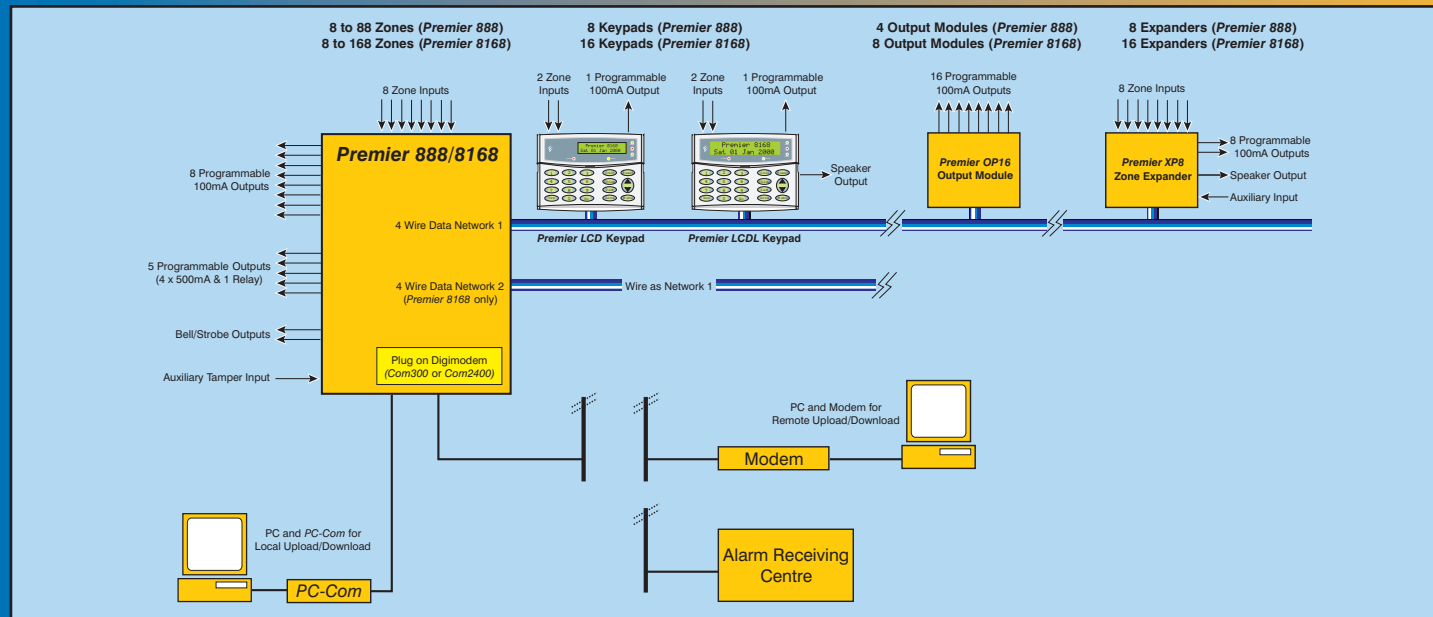
The Premier 888 & Premier 8168 also feature:

- ✓ 4-WIRE DATA NETWORK FOR CONNECTING KEYPADS & OUTPUT MODULES USING STANDARD 7/0.2 ALARM CABLE
- ✓ ZONE EXPANSION USING KEYPADS (2 ZONES) & ZONE EXPANDERS (8 ZONES)
- ✓ 8 PART ARM SUITES
- ✓ 32 CHARACTER ZONE TEXT
- ✓ FOOTPRINT FOR A PLUG-ON RedCARE OR Dualcom
- ✓ LOCAL & REMOTE UPLOAD/DOWNLOAD & PRINTER FACILITY
- ✓ CTR21 TELECOMMUNICATION APPROVAL
- ✓ PREMIER COM300 PLUG-ON DIGIMODEM (FAST FORMAT, CONTACT ID, SIA LEVEL II & PAGER)

Premier, PC-Com & Wintex are trademarks of Texecom Ltd. (P888/8168.EU1)

Texecom
www.texe.com

CONTROL PANEL FEATURES



- ✓ EACH ZONE PROGRAMMABLE TO 1 OF 19 TYPES
- ✓ EACH ZONE MAY BE WIRED AS DP OR EOL
- ✓ EACH ZONE HAS 16 PROGRAMMABLE ATTRIBUTES
- ✓ PROGRAMMABLE ZONE LOOP RESPONSE TIME
- ✓ ZONE SOAK TEST FACILITY
- ✓ 35 PROGRAMMABLE SYSTEM/PARTITION TIMERS
- ✓ 78 PROGRAMMABLE OUTPUT FUNCTIONS & 8 OUTPUT ATTRIBUTES

- ✓ EACH KEYPAD HAS 19 PROGRAMMABLE OPTIONS INCLUDING AREA ASSIGNMENT, EMERGENCY ALARM ENABLE/DISABLE, QUICK ARM ENABLE/DISABLE & SYSTEM ALARM TONES ENABLE/DISABLE
- ✓ EXTERNAL SOUNDER CONNECTIONS
- ✓ PRINTER OUTPUT VIA LOCAL PC-COM MODULE
- ✓ STAND-BY BATTERY TEST
- ✓ PROGRAMMABLE VOLUME CONTROL FOR PANEL/KEYPAD & EXPANDER SPEAKER OUTPUT



PREMIER LCD & PREMIER LCDL REMOTE KEYPADS

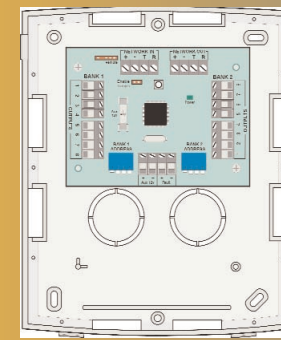
The Premier LCD and the Premier LCDL are both 32 character LCD remote keypads. The Premier LCD has a standard size display and the Premier LCDL has a large display and speaker output.

- ✓ 2 FULLY PROGRAMMABLE DP OR EOL ZONES
- ✓ 1 FULLY PROGRAMMABLE OUTPUT
- ✓ PROGRAMMABLE INFORMATION LED
- ✓ FULLY ADJUSTABLE BACKLIGHTING
- ✓ BUILT-IN PIEZOELECTRIC SOUNDER
- ✓ SPEAKER DRIVER OUTPUT (PREMIER LCDL only)
- ✓ 4-WIRE CONNECTION TO NETWORK USING STANDARD 7/0.2 ALARM CABLE
- ✓ UP TO 8 KEYPADS CAN BE CONNECTED (PREMIER 888)
- ✓ UP TO 16 KEYPADS CAN BE CONNECTED (PREMIER 8168)

PREMIER XP8 ZONE EXPANDER

The Premier XP8 Zone Expander provides additional zone and output expansion.

- ✓ 8 FULLY PROGRAMMABLE DP OR EOL ZONES
- ✓ 8 FULLY PROGRAMMABLE OUTPUTS
- ✓ SPEAKER DRIVER OUTPUT
- ✓ 4-WIRE CONNECTION TO NETWORK USING STANDARD 7/0.2 ALARM CABLE
- ✓ UP TO 8 EXPANDERS CAN BE CONNECTED (PREMIER 888)
- ✓ UP TO 16 EXPANDERS CAN BE CONNECTED (PREMIER 8168)
- ✓ PROGRAMMABLE AUXILIARY INPUT



PREMIER OP16 OUTPUT MODULE

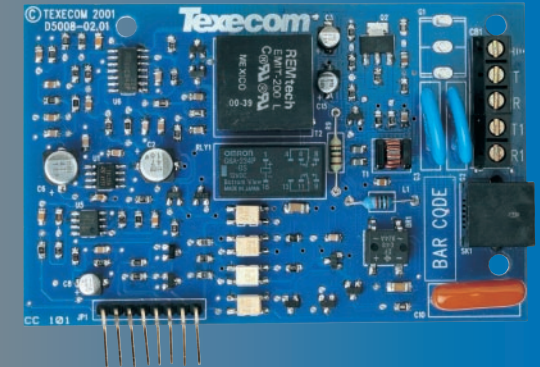
The Premier OP16 Output Module provides additional output expansion.

- ✓ 16 FULLY PROGRAMMABLE OUTPUTS (100mA -VE APPLIED)
- ✓ FAULT INDICATION OUTPUT
- ✓ 4-WIRE CONNECTION TO DATA-BUS USING STANDARD 7/0.2 ALARM CABLE
- ✓ UP TO 4 OUTPUT MODULES CAN BE CONNECTED (PREMIER 888)
- ✓ UP TO 8 OUTPUT MODULES CAN BE CONNECTED (PREMIER 8168)

PREMIER Com300 & PREMIER Com2400 DIGIMODEMS

The Premier Com300 is a plug-on multi protocol digital communicator/300-baud modem and the Premier Com2400 is a plug-on multi protocol digital communicator/2400-baud modem.

- ✓ 3 TELEPHONE NUMBERS (UP TO 24 DIGITS EACH)
- ✓ DTMF OR PULSE DIALLING FORMATS
- ✓ FAST FORMAT, CONTACT ID, SIA LEVEL II & PAGER PROTOCOLS
- ✓ PROGRAMMABLE REPORTING CODES FOR EACH SYSTEM EVENT (CONTACT ID & SIA LEVEL II)
- ✓ ANSWER PHONE DEFEAT OPTION



PC-Com

This module adds full local Upload/Download capability to the Premier 888 & Premier 8168. One end of the interface plugs onto the control panel, whilst the other end plugs into a PC or Laptop running the Wintex Software. The module can also be used for printing panel details or the Event Log using a standard RS232 printer.

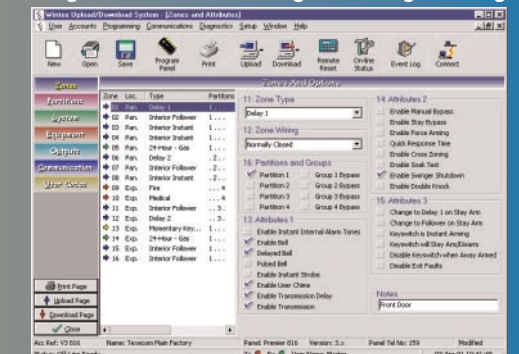
WINTEX UPLOAD/DOWNLOAD SOFTWARE

This user-friendly Windows based software, designed for use with the Premier Series of control panels, provides complete upload/download and systems diagnostics for total control and flexibility.

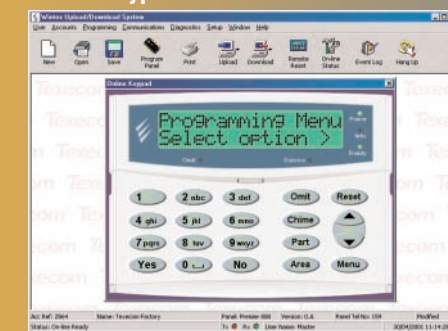
Main Program Screen



Program Screen - Showing Zone Programming



Online Keypad Screen



Diagnostics Screen - Showing Output & Systems Status

