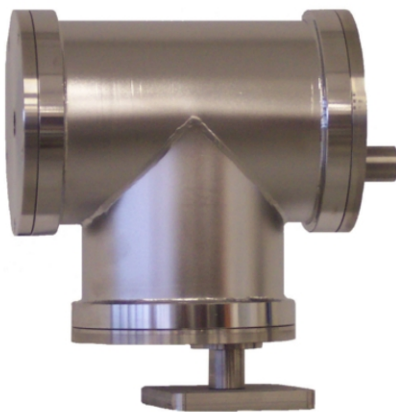




Stainless Steel P&T Unit

SSPT300

AISI316L Stainless Steel construction
For use in highly corrosive environments
Maximum Load 25 kg
24/240 VAC 50/60 Hz versions
Weatherproof standard IP67
Pre-set positioning fitted as standard



■ SSPT300
Stainless Steel Pan&Tilt Unit

- SSPT300 Pan/Tilt unit has been developed for use in the Offshore, Marine and Industrial installations and in general where corrosive agents can cause a rapid deterioration of a standard aluminum-steel unit.

The SSPT300 Pan & Tilt Unit comprises a 'T' body with three end covers. The 'T' body encapsulates the Pan and Tilt Drive Motors together with control and interconnection PCB. Two end covers are equipped with a pass through axis to accommodate the Pan and Tilt motor shafts. The third end cover provides access for cable entry.

SSPT300 internal parts are constructed of AISI316L Stainless Steel or aluminum.

The unit is capable of handling loads of up to 25 kg and features electronically adjusted limit switches and rugged high torque motors to ensure long operational life. Potentiometers on both axis allow the pre-set positioning of the unit.

Mounting brackets are available manufactured from AISI316L Stainless Steel.



■ SSPT300 + 129SH
Pan & Tilt with 129SH housing

Technical Specifications

MODELS

SSPT300 P&T unit, 24/110/230 VAC motors

ELECTRICAL

Voltage: 24/230 VAC 50/60 Hz

Power consumption: 7.5 W per Motor

Max Power Dissipation: 20 W

GENERAL & MECHANICAL

Construction: AISI316L Stainless Steel

Finish: Electro-polished

Pan Angle: 365° Max

Pan Speed: 6°/second

Pan Torque: 25 Nm

Tilt Angle: +10° -90° from horizontal

Tilt Speed: 3°/second

Tilt Torque: 48 Nm

Backlash: <0.3°

Maximum load: 25kg

Cable entries: M20x1,5 ISO

Weight: 16 kg

Mounting: 4x6mm on 101.6 mm PCD

MOUNTING ACCESSORIES

SSBK300 AISI316L Stainless Steel wall mounting bracket

SSPM300 AISI316L Stainless Steel pole mount adapter

SUITABLE CAMERA HOUSINGS

129 Series medium stainless steel camera housings

168 Series medium-large stainless steel camera housings

204 Series large stainless steel camera housings

Pre-set Positioning: Fitted as Standard

Seals: 'O' Ring

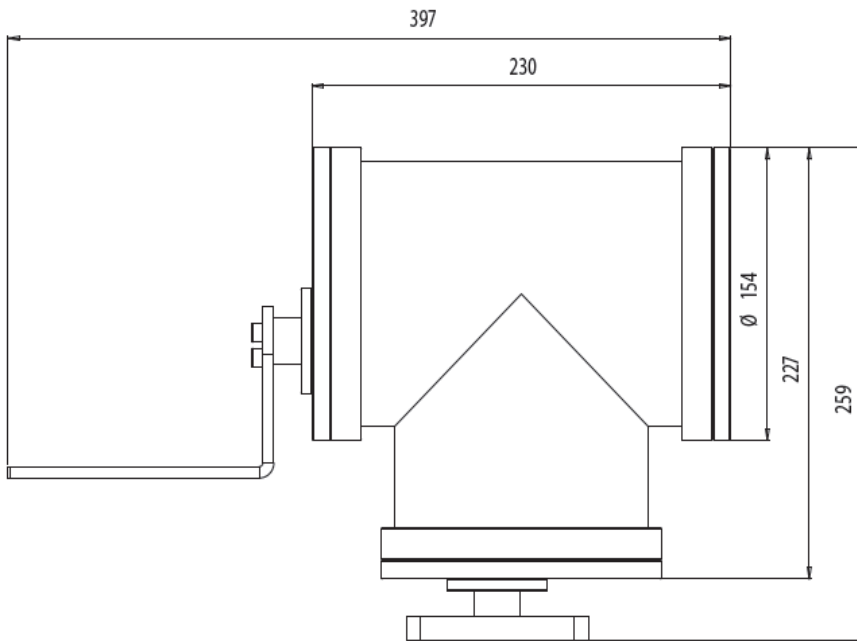
CERTIFICATION

Rating: IP67

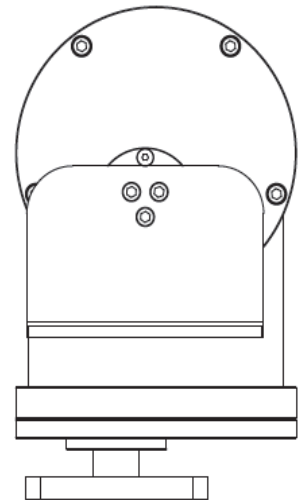
Ambient Temperature Range: -20° to +55° C

Dimensions

FRONTAL VIEW



SIDE VIEW



MOUNTING PATTERN

