

Stainless Steel Liquid Cooled Camera Housing

AISI316L Stainless Steel construction
For use in highly corrosive environments
Easy installation and maintenance
Liquid cooling system
Weatherproof standard IP67
Refined and modern design

129LC Series

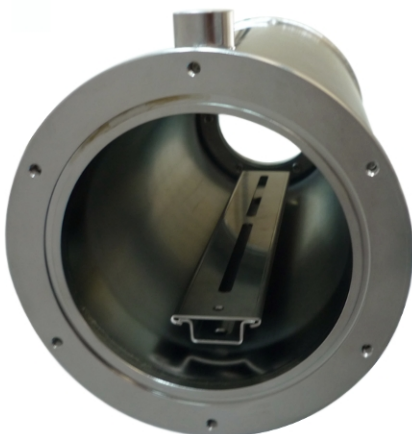


■ 129LC + SSBK129LC
Liquid cooled housing with wall mount bracket

- Hot and harsh environments require adequate equipment. The 129LC (liquid cooled) series stainless steel camera housing is designed to protect cameras and optics in the most severe applications. This series is conceived to fit cameras that are too small to need a 168LC series camera housing, but need an extra protection for very hot and dirty places, such as ovens and foundries. The front flange is engineered to have an air barrier, useful both to cooling down and keeping the front window clean. To avoid oil and dust particles and to grant clean air for the barrier, a filter battery is available as optional.

The 129LC series camera housings are made by two AISI316L stainless steel tubes close at their ends in a way that a special chamber that allows water or other cooling liquids to cool down the housing.

This camera housing series has been designed with highest quality materials and production processes, paying particular attention on good looking solutions and on mounting and maintenance tasks ease.



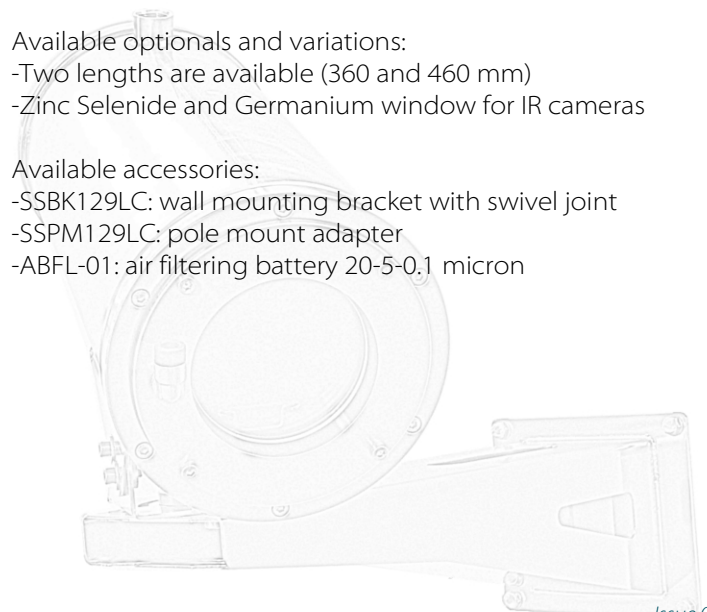
■ 129LC
Internal view

Available optionals and variations:

- Two lengths are available (360 and 460 mm)
- Zinc Selenide and Germanium window for IR cameras

Available accessories:

- SSBK129LC: wall mounting bracket with swivel joint
- SSPM129LC: pole mount adapter
- ABFL-01: air filtering battery 20-5-0.1 micron



Technical Specifications

MODELS

129LC*	Housing (Length=360mm)
129LC-L*	Housing (Length=460mm)
129LCIRZ70**	Housing (360mm) for IR viewings
129LCIRZ70-L**	Housing (460mm) for IR viewings
129LCIRG70***	Housing (360mm) for IR viewings
129LCIRG70-L***	Housing (460mm) for IR viewings

- * Usable front window 70mm; thickness 5mm, borosilicate glass (Borofloat), with high chemical resistance and low thermal expansion
- ** Usable front window 70mm; thickness 5mm, Zinc Selenide with AR/AR coating
- *** Usable front window 70mm; thickness 3mm, Germanium with AR/DLC coating; recommended environmental temperature not above 100° C

GENERAL & MECHANICAL

Construction: AISI316L Stainless Steel
Finish: Electro-polished

External Dimensions

Model	HxW [mm]	L [mm]
129LC	224,3x175	400
129LC-L	224,3x175	500

Internal dimensions, Maximum camera + lens size:

Model	HxW [mm]	L [mm]
129LC	89x89	345
129LC-L	89x89	445

Weight [kg]

Model	Unit	Package
129LC	13	14
129LC-L	15	16
129LCIR70	13	14
129LCIR70-L	15	16

Cable Entry:

2 M20x1,5 threaded holes on the rear flange. Cable glands not included.

TEMPERATURE

Temperature [°C]

Front window material	Outside	Inside
Borosilicate glass (Borofloat)	200	23
Borosilicate glass (Borofloat)	300	33
Borosilicate glass (Borofloat)	400	45
Zinc Selenide	200	23
Zinc Selenide	300	33

Temperature tests with 6 l/min water flow and with 6 bar air pressure in the front air barrier

Temperature [°F]

Front window material	Outside	Inside
Borosilicate glass (Borofloat)	392	74
Borosilicate glass (Borofloat)	572	92
Borosilicate glass (Borofloat)	752	113
Zinc Selenide	392	74
Zinc Selenide	572	92

Temperature tests with 1,59 US gal/min water flow and with 6 bar air pressure in the front air barrier

RECOMMENDED MOUNTING ACCESSORIES

SSBK129LC	AISI316L Stainless Steel wall mounting bracket with swivel joint
SSPM129LC	AISI316L Stainless Steel Pole Mount adapter

CERTIFICATIONS

Weatherproof standard: IP67
CE Compliant

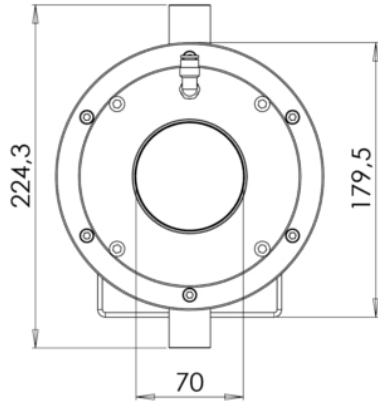
RECOMMENDED SPARE PARTS AND ACCESSORIES

MK129LC	Maintenance Kit with O-ring seals, screws seals, screws, desiccant bags.
ABFL-01	Air filtering battery 20-5-0.1 micron

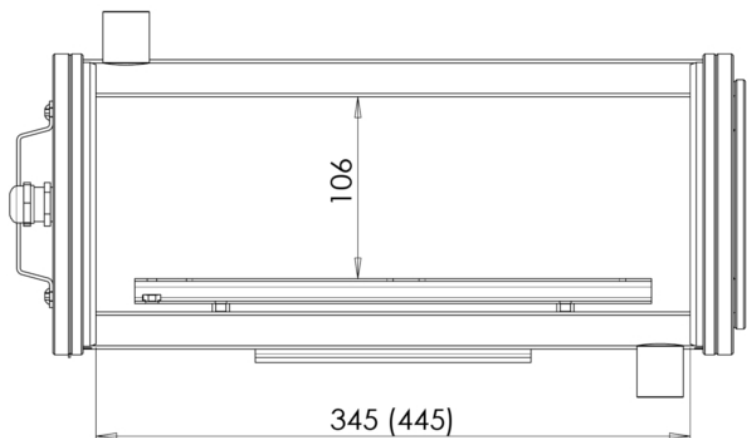
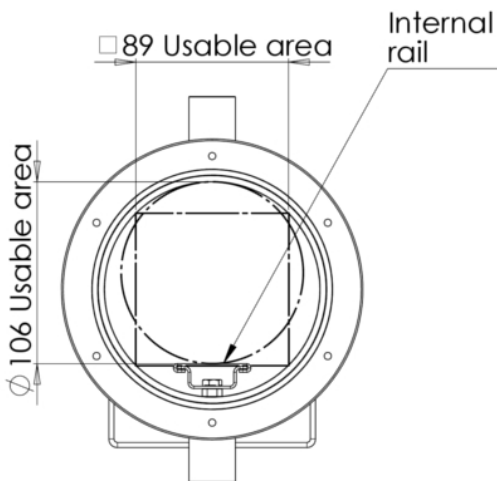
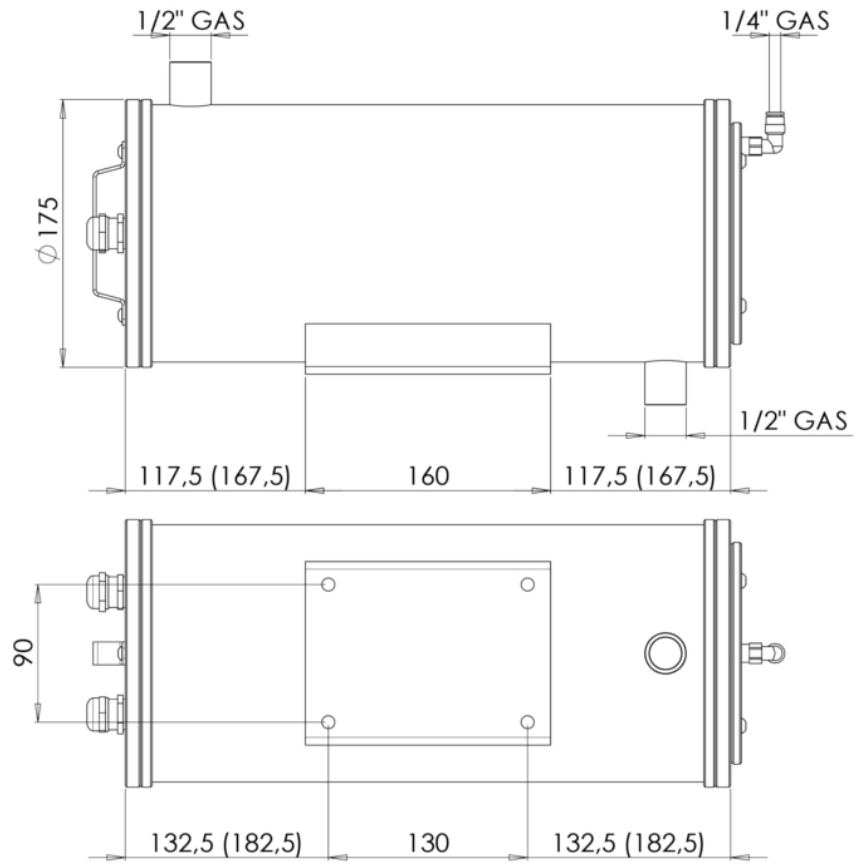


Dimensions

FRONTAL VIEW



SIDE VIEW



Dimensions in millimeters - Design and product specifications subject to change without notice