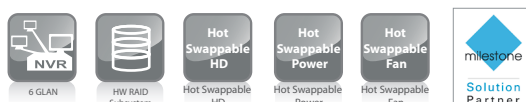


EMR9000

Enterprise Megapixel HW RAID NVR



- Built-in EonStor® Hardware RAID Controller with 3000+ Mbps IOPs
- Support HW RAID 0, 1, 5, 6, 50, 60
- Built-in 6 GLAN for Multi-channel Megapixel Surveillance Projects
- High Availability and Easy Maintenance with Redundant Modules
- Industrial Grade Platform Powered by Intel® Xeon Quad Core Processor
- 100% In-house Design and Production with 3 Years Warranty
- Surveon Megapixel Quality Assurance Lab Certificated
- Pre-load certified VMS



Megapixel solutions are the key trend in video surveillance with the advanced benefit of 6-time better image clarity. However, high I/O, huge capacity, and stability of the overall system are major challenges for system integrators. Surveon's Certified Megapixel Recorders, allied with the most qualified partners in the industry, provide a high performance and reliable platform. Built-in with the world's leading EonStor HW RAID subsystem, the EMR9000 secures the multi-channel megapixel recording performance while keeping the scalability for the maximum of 112 disks. The industrial grade design of XEON Quad Core processor, 2 SAS ports, 6 GLAN and redundant module have made EMR9000 an absolute choice over the commercial PCs and the ideal solution for mission critical surveillance projects, such as hotel, school, bank, factory, transportation, city surveillance and public utility.

Performance Validation

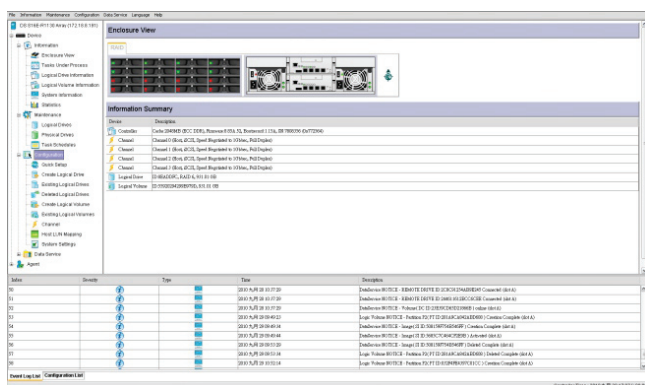
Model	Total Channels	Camera Resolution	Camera Compression	Camera Bit Rate	FPS	Recording Channels	Client Channels Live View	Client Channels Playback	Validation*
EMR9000-SAS	32	1080p	H.264	6Mbps	30	32	2 x 32	1 x 16	PASS
EMR9000-SAS	48	1.3M	H.264	4Mbps	30	48	2 x 32	1 x 16	PASS
EMR9000-iSCSI	32	1080p	H.264	6Mbps	30	32	2 x 32	1 x 16	PASS
EMR9000-iSCSI	48	1.3M	H.264	4Mbps	30	48	2 x 32	1 x 16	PASS

*Remarks:

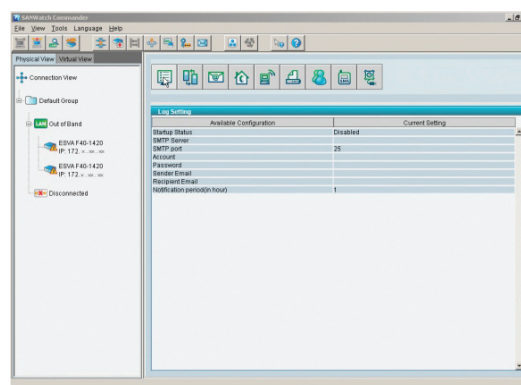
- Pass Condition: Server CPU < 80%, Live view/Playback: Gb port < 900Mb/s, Recording: Gb port < 300Mb/s, iSCSI: 2 GbE port < 1000Mb/s, Recording Server is stable.
- Tested with Milestone XProtect® Enterprise.

RAID Management Suite

The EMR9000 is built-in with the SANWatch storage management tool that provides a clear view on storage system information and overall system operation status, such as hardware components, firmware, CPU temperature, and read/write performance. The SANWatch also features a notification manager via a variety of methods, including email, LAN broadcast, fax, SNMP traps, SMS, and MSN.



Easy access to all storage system



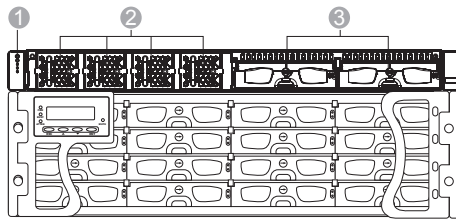
Multiple notifications supported

EMR9000

Enterprise Megapixel HW RAID NVR

Part Names and Functions

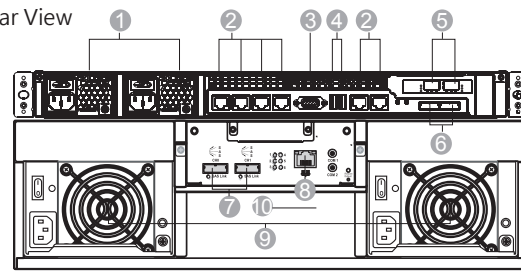
Front View EMR9000 Head



RAID Subsystem

- ① LED
- ② 4 x Hot Swappable Fan
- ③ System Drive (reserved)

Rear View



- ① Redundant Power
- ② 6 x Ethernet
- ③ Debug Console
- ④ 2 x USB
- ⑤ VGA
- ⑥ 2 x SAS Port
- ⑦ 2 x SAS Port (Storage)
- ⑧ Management Port
- ⑨ Redundant Power Supply
- ⑩ Redundant Thermal Fan

Hardware Specifications

EMR9000 Head	
System	Client-server architecture, Chassis: 1U 19" Rack
Server Processor	Intel® XEON EC5509 / EC5549 (64CH)
System Memory	6GB, DDR3
I/O Interface	<ul style="list-style-type: none"> • RJ-45: 6xGigabit Ethernet • SAS Expansion port
Electrical	<ul style="list-style-type: none"> • Input voltage :115 V AC @ 6 A/240 V AC @ 3 A • Power: 380 watt (Redundant Power)
Environmental	Temperature: <ul style="list-style-type: none"> • Operating: 10 °C to 35°C (50 ° F to 95 ° F) • Non-operating: -40 °C to 70°C (-40 ° F to 158 ° F) Humidity: <ul style="list-style-type: none"> • Operating: 5 % to 95 %, non-condensing • Non-operating: 5 % to 95 % non-condensing
Certificates	FCC Class A, CE, CB, UL60959/ IEC 60950, CCC
Weight	Gross weight: 17.3 kg (38 lb.)
Dimensions	50.4(W)x 43.7(D)x 4.3(H) cm (19.85 " x 17.2 " x 1.7 ")
RAID Subsystem	
Host Connectivity	1 or 2 SAS 4x wide ports per controller
Drive Connectivity	SAS/SATA-II disk, 12 or 16 drives per system, hot swappable
Form Factor	2~3U, 19 inch rackmount
RAID Functionality	RAID 0, 1 (0+1), 3, 5, 6, 10, 30, 50, 60, hot-spare, online expansion, RAID migration, intelligent drive handling
Environmental	Operating temperature: 5° to 40°C (35°C if battery is applied) Non-operating temperature: - 40° to 60°C Humidity: 5 to 95%, non-condensing
Certification	CE, FCC Class B, BSMI, UL, GOST-R (dependent of iVS model)
Weight	Gross weight : 12 Bay:25kg ; 16 Bay: 30.5kg
Dimensions	12 Bay: chassis without handles: 446(W) x 88(H) x 490(D) mm; chassis with handles: 482 (W) x 88(H) x 505(D) mm 16 Bay: chassis without handles: 445(W) x 130(H) x 488.2(D) mm; chassis with handles: 482.6(W) x 131(H) x 504.3(D) mm

Optional Accessories

Part Number	Description
H72A1XA3XXDX-0030	Desktop, 2TB SATA HDD, 6Gb/s
H72A2XA3XXDX-0030	Desktop, 3TB SATA HDD, 6Gb/s
H72A1XA3XXX-0030	Enterprise, 2TB SATA HDD, 6Gb/s
H72A2XA2XXX-0030	Enterprise, 3TB SATA HDD, 6Gb/s

Ordering Information

Barebone	
Part Number	Description
EMR9000-XXB*	EMR9000 HW RAID NVR Platform, Direct Attach Storage Solutions (SAS)
EMR9000 with iSCSI-XXB*	EMR9000 HW RAID NVR Platform, Storage Area Network Solutions (iSCSI)
* XXB = 12B/ 16B/ 24B/ 32B/ 36B/ 48B/ 60B/ 64B/ 80B/ 112B	

O.S. Pack & XProtect Installation Kit	
Part Number	Description
EMR9000C2B1 (RAID)	1 HDD (1TB HDD, 3Gb/s) + Windows Server 2008 R2, RAID Boot Protection
EMR9000C2B2 (RAID)	2 HDD (1TB HDD, 3Gb/s) + Windows Server 2008 R2, RAID Boot Protection
EMR9000C1B1 (RAID)	1HDD (1TB HDD, 3Gb/s) + Windows7 Professional, RAID Boot Protection
EMR9000C1B2 (RAID)	2HDD (1TB HDD, 3Gb/s) + Windows7 Professional, RAID Boot Protection

Milestone XProtect License*	
Part Number	Description
XLIC0XXXBYYY**	Milestone XProtect® Server License*** with Milestone XProtect® Camera License
XLIC0XXXCYYY**	Additional Milestone XProtect® Camera License

* For Greater China Only
 **XXX= Milestone XProtect Products (XProtect® Essential / Express / Professional / Enterprise / Corporate)
 YYY= Number of Camera Channels
 ***Milestone XProtect® Essential /Express Server Base License, Preload with 2 Camera License

EMR9000 Series Part Numbers

