



## STREAM-BRIDGE MULTIPOINT SYSTEM



**SKU: SILSTRBR**

### ■ Features

- Practical data-rate\*: **45+ Mbit/Sec** of user data or (SuperAG Enabled) **80+ Mbit/Sec** in turbo mode
- DFS (Dynamic Frequency Selection)
- TPC (Transmit Power Control)
- 108Mbps
- AP, AP Client, and Bridge
- IEEE802.11a
- Metal case design
- OFDM
- WEP, WPA, WPA2
- WEB Management
- Point-to-Point
- Point-to-Multipoint
- POE

### ■ What is the STREAM-BRIDGE?

The STREAM-BRIDGE is a Wireless outdoor Bridge that has been optimised for Multipoint applications. The STREAM-BRIDGE works at 5GHz and is compatible with the 802.11a standard.

The STREAM-BRIDGE is an Ideal high bandwidth solution for point to multipoint links, With staggeringly high throughput and very long distance transmission,

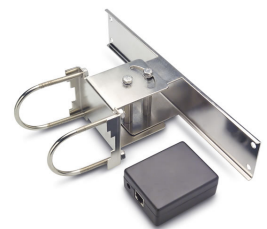
The STREAM-BRIDGE has WEP, WPA and WPA2 encryption and has a N-Type antenna port. Enhanced features, including Turbo mode (up to 108Mbps), eXtended Range (XR), real-time compression and packet bursting, gives the STREAM-BRIDGE unparalleled data throughput capabilities.

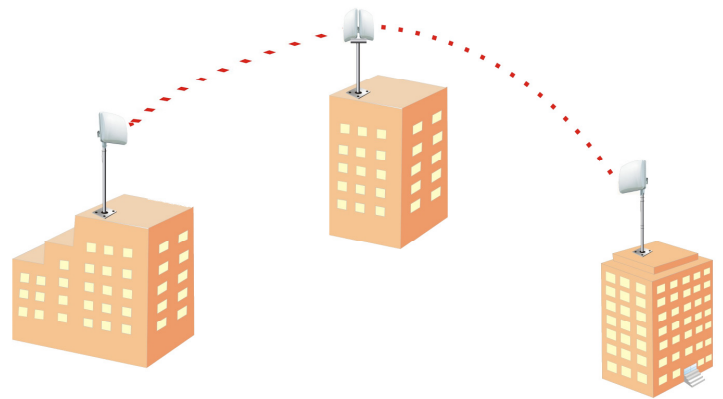
### ■ The advantages of the STREAM-BRIDGE

- Easy configuration
- Simple network structure. Easy to install. Power over Ethernet functionality requires only a single Ethernet cable between the LAN and the STREAM-BRIDGE for sufficient power.

### Contents

▪STREAM-BRIDGE	*1
▪Mounting brackets	*1
▪Product CD	*1
▪Power Adapter(48V)	*1





Multipoint System

Feature	
Transmission rate	108 54 48 36 24 18 12 9 6 Mbps
Operating Mode	AP, AP Client, and Bridge
Wireless	IEEE802.11a
Other wireless	Enable/Disable broadcast SSID
Standards	IEEE802.11a IEEE802.3/u IEEE802.3af
Security	
WEP Encryption	64 / 128 / 152 bits
Radius	Supports Radius Client
802.1x	Supports 802.1x Client and Server
WPA	Wi-Fi Protected Access (EAP, TKIP)
WPA2	AES/802.11i
SSID	Support Enable/Disable Broadcast
MAC	Supports MAC address filtering
Physical	
Antenna connector	N-Type
HPBW/ Horizontal/ Vertical	10° x 10°
Front to back ratio	20dB
Max-bandwidth	Full: 100Mbps (100Base), 10Mbps (10Base)
LAN/WAN	One 10/100BASE-T (RJ-45) LAN Port
Default button	Yes
Power	DC 48Volt/1A POE; AC Adapter 100V~240V
Channel (Country Dependent)	USA (FCC): 5.15GHz~5.35GHz; 5.725GHz~5.825GHz Europe (ETSI): 5.47GHz ~5.850GHz China: 5.725GHz ~5.85GHz
RF output power	20dBm MAX from port
Sensitivity	-72dBm@54Mbps
Dust and Waterproof	Ip65 Certified
Dimensions	19cm(L) x 14cm(W) x 8.5cm(H)
Weight	1.5Kg Each
Management	
WEB	Yes
Firmware	Upgradeable via web
Environment	
Operating Temperature	-20~60℃
Humidity	0~90 %

## STREAM Series Product Information

### STREAM-MINI

Wireless Outdoor bridge up to 2KM

◆ 11a up to **45 - 80Mbps data throughput** radio, DFS, TPC, IEEE802.11a, OFDM, WPA, WPA2, WEB Management, AP, AP Client, and Bridge, POE. Built in 14.5dBi antenna

SKU: **SILMINI**

Paired SKU: **SILMINI-PCP**

### STREAM-LITE

Wireless Outdoor bridge up to 6KM

◆ 11a up to **45 - 80Mbps data throughput** radio, DFS, TPC, IEEE802.11a, OFDM, WPA, WPA2, WEB Management, AP, AP Client, and Bridge, POE. Built in 18dBi antenna

SKU: **SILLITE**

Paired SKU: **SILLITE-PCP**

### STREAM-MAX

Wireless Outdoor bridge up to 58.5KM

◆ 11a up to **45 - 80Mbps data throughput** radio, DFS, TPC, IEEE802.11a, OFDM, WPA, WPA2, WEB Management, AP, AP Client, and Bridge, POE. Built in 23dBi antenna

SKU: **SILSTMAX**

Paired SKU: **SILSTMAX-PCP**

Distributed by:

Copyright © SilverNet Limited. All rights reserved. All rights reserved. All other company and product names may be trademarks of their respective companies. Whilst every effort is made to make sure the information shown is accurate SilverNet Limited cannot accept liability for any errors that may arise.

No freedom to use information, patents, trade marks, or other intellectual property rights is implied by the publication of this document. E&OE

SilverNet Limited reserve the right to change specifications and other information within this document without notice and your attention is brought to the fact that performance figures are under ideal conditions. Actual performance will depend on many environmental factors and it is recommended that a site survey if undertaken prior to installation.

Please also note that this equipment may also be subject to local legislative restrictions such as Band C operation within the UK. It is the end users responsibility to ensure that the installation complies with any such restrictions that are in force.