



Features

- 300Mbps
- AP, AP Client, and Bridge
- 802.11n/a/b/g
- Simple design
- OFDM
- TPC, DFS
- WEP, WPA(TKIP), WPA2(AES)
- WEB Management
- Point-to-Point
- Point-to-Multipoint
- POE

11n MICRO300



300Mbps

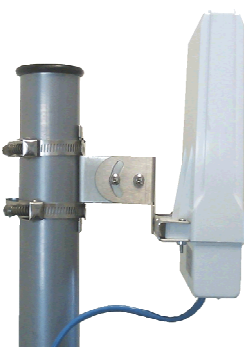
SKU: SILMMICRO-PCP

The advantages of the 11n MICRO300

- Easy configuration. Supplied as pre-configured pairs so that all you need to do is power them up.
- Simple network structure. Easy to install. Power over Ethernet functionality requires only a single Ethernet cable between the LAN and the 11n MICRO300 for sufficient power.

Contents

- 2 x 11n MICRO300
- 2 x Mounting brackets
- 1 x Product CD
- 2 x Power Adapter(48V)



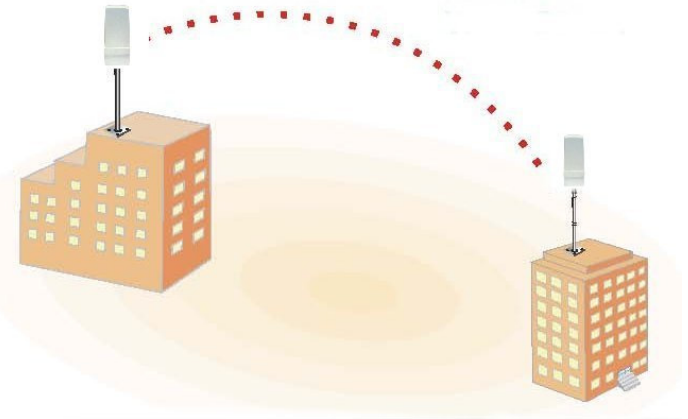
What is the 11n MICRO300?

The 11n MICRO300 is a Wireless outdoor bridge that has been optimised for distances up to 1km and has been designed to be extremely compact.

The 11n MICRO300 works at 2.4Ghz or 5Ghz and is compatible with the 802.11n/a/b/g standard.

The 11n MICRO300 also supports a variety of security features such as WEP, TKIP, AES, receive and transmit filtering, error recovery, quality of service (QoS) as well as IEEE802.1x standard, providing excellent security for the wireless network and increased WLAN performance.

The 11n MICRO300 is an Ideal low cost solution for short-range point to point or point to multipoint links and has a built in 13dBi antenna.



1KM 'Link in a Box'

11n Series Product Information

11n MICRO300

Up to 300Mbps

◆ 11n up to **100Mbps data throughput** radio, DFS, TPC, IEEE802.11n, OFDM, WPA, WPA2, WEB Management, AP, AP Client, and Bridge, POE. Built in dual 13dBi antenna

SKU: SILMICRO300-PCP

11n MAX300

Up to 300Mbps

◆ 11n up to **240Mbps data throughput** radio, DFS, TPC, IEEE802.11n, OFDM, WPA, WPA2, WEB Management, AP, AP Client, and Bridge, POE. Built in dual 23dBi antenna, including XSPAN spatial multiplexing and real-time compression.

SKU: SILMAX300-PCP

Feature		
Radio	5Ghz	2.4Ghz
Transmission rate	11n: 300, 270,240,180, 120, 90, 60, 30Mbps 11a: 54, 48, 36, 24, 18, 12, 9, 6Mbps	11b: 11,5.5,2,1Mbps 11g: 54, 48, 36, 24, 18, 12, 9, 6Mbps
Operating Mode	AP, AP Client, and Bridge	
Other wireless	Enable/Disable broadcast SSID	
Standards	IEEE802.11n IEEE802.11a	IEEE802.11b IEEE802.11g
Security		
WEP Encryption	64 / 128 / 152 bits	
Radius	Supports Radius Client	
802.1x	Supports 802.1x Client and Server	
WPA (TKIP)	Wi-Fi Protected Access (EAP, TKIP)	
WPA2 (AES)	AES/802.11i	
SSID	Support Enable/Disable Broadcast	
MAC	Supports MAC address filtering	
Physical		
Antenna	13dBi Integrated Antenna	8dBi Integrated Antenna
HPBW/ Horizontal/ Vertical	30°x 20°	60°x 60°
Front to back ratio	25dB	
Max-bandwidth	Full: 100Mbps (100Base), 10Mbps (10Base)	
LAN/WAN	Dual 10/100BASE-T (RJ-45) LAN Port (with Auto MDI/MDIX)	
Default button	Yes	
Power	DC 12~48Volt or POE	
Channel (Country Dependent)	USA (FCC): 5.15Ghz~5.35Ghz; 5.725Ghz ~ 5.825Ghz Europe (ETSI): 5.47Ghz ~5.850Ghz China: 5.725Ghz ~5.85Ghz	USA (FCC): 2.412GHz ~ 2.462GHz; Japan: 2.412GHz ~ 2.484GHz Europe (ETSI): 2.412GHz ~2.472GHz
RF output power	26dBm MAX	
Sensitivity	-70dBm@54Mbps	
Dust and Waterproof	Ip65 Certified	
Dimensions	22.3 x 12.3 x 6 (cm)	
Weight	0.4Kg	
Management		
WEB	Yes	
Firmware	Upgradeable via web	
Environment		
Operating Temperature	-20~70°C	
Humidity	0 ~ 90%	

Distributed by:

Copyright © SilverNet Limited. All rights reserved. All other company and product names may be trademarks of their respective companies. Whilst every effort is made to make sure the information shown is accurate SilverNet Limited cannot accept liability for any errors that may arise.

No freedom to use information, patents, trade marks, or other intellectual property rights is implied by the publication of this document. E&OE

SilverNet Limited reserve the right to change specifications and other information within this document without notice and your attention is brought to the fact that performance figures are under ideal conditions. Actual performance will depend on many environmental factors and it is recommended that a site survey if undertaken prior to installation.

Please also note that this equipment may also be subject to local legislative restrictions such as Band C operation within the UK. It is the end users responsibility to ensure that the installation complies with any such restrictions that are in force.