

VDC-D1185VP/D2185VP

Specifications

Model	VDC-D1185VP	VDC-D2185VP
Housing	Surface	In-ceiling
Scanning system	PAL standard TV system (625 TV lines, 25 frames/sec)	
Interlace	PLL 2:1 interlace	
Image device	1/4-inch interline transfer CCD	
Picture elements	795 (H) x 596 (V)	
Effective picture elements	752 (H) x 582 (V)	
Synchronizing system	Internal sync / Line lock	
Resolution	Horizontal: 520 TVL, Vertical: 400 TVL	
Video output level	1.0 Vp-p/75 ohms, composite	
Video S/N ratio	More than 48 dB	
Minimum illumination (approx.)	0.06 lx (F 1.4, B/W mode) / 1.2 lx (F 1.4, colour mode)	
White balance	ATW / Manual switching	
Backlight compensation	Manual ON (multi-spot photometry, center-focus photometry) / OFF	
Electronic shutter	4 speeds, selectable by switches: 1/50, 1/120, 1/1000, 1/2000 sec.	
Built-in lens	Varifocal lens, 2.8–5.8 mm	
Pan/tilt adjustment (manual)	Horizontal: 180°, Vertical: 90°	
Enclosure rating	IP66	
Operating environment	Temperature: -10°C to +50°C, Humidity: less than 90% (no condensation)	
Power requirement	12V DC or 24V AC, 50 Hz	
Power consumption (approx.)	2.9W	
Weight (approx.)	1.35 kg (2.97 lbs.)	1.02 kg (2.23 lbs.)

NOTE: Specifications subject to change without notice.

Dome Series Product Number System

VDC-D1185VP

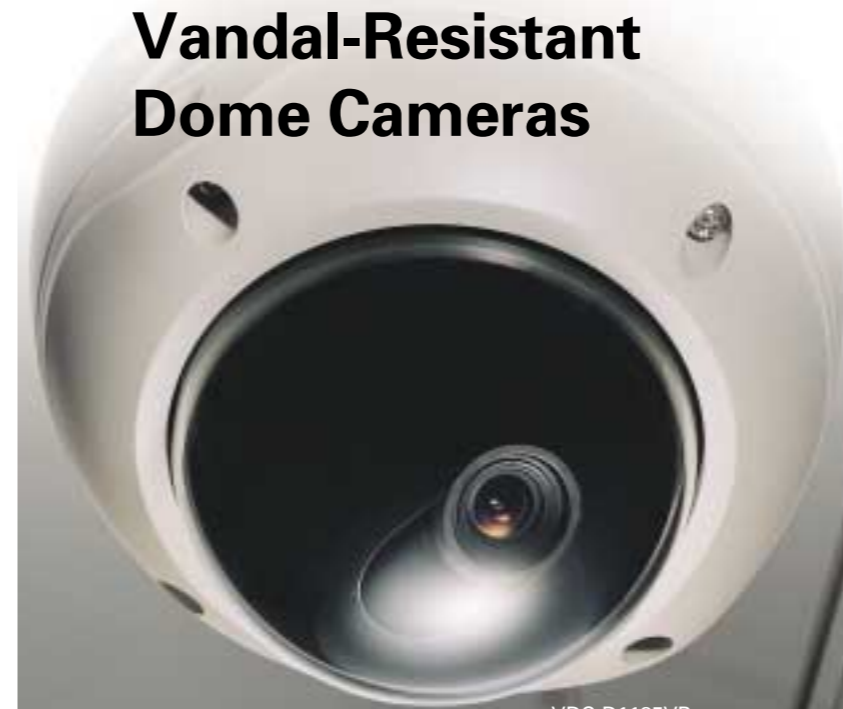
- D ...Day/Night Shooting
- 11 ...Surface Mount Housing
- 21 ...In-Ceiling Mount Housing
- 85 ...High Resolution (520 TV Lines)
- V ...Varifocal Lens

SANYO

1/4" Colour CCD Vandal-Resistant Dome Cameras

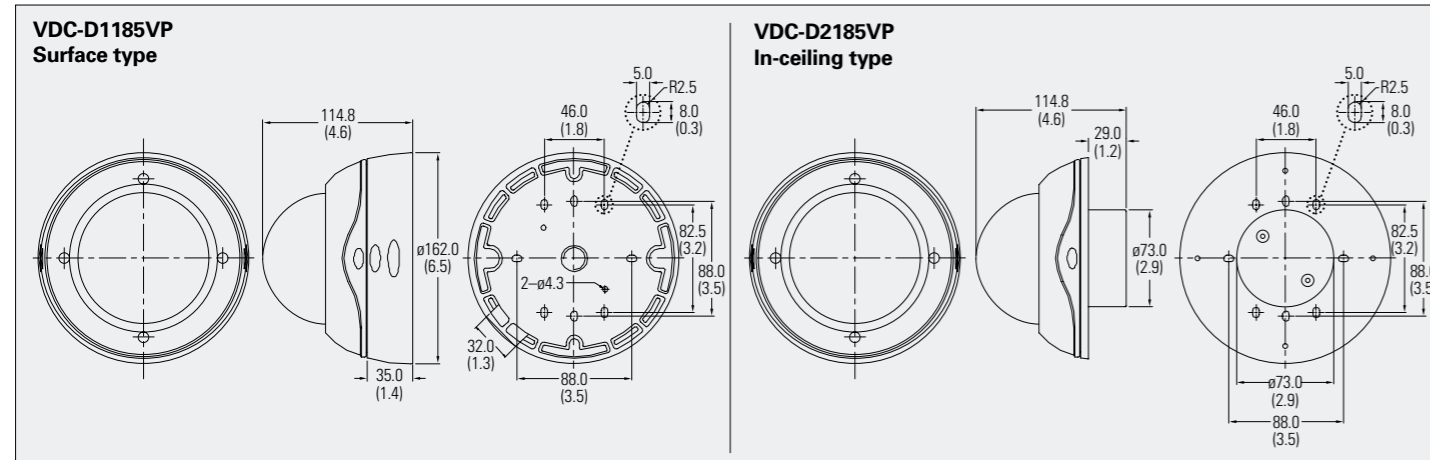
VDC-D1185VP VDC-D2185VP

DIGITAL



VDC-D1185VP

Dimensions [Unit: mm (inch)]



Rugged Construction
520 TV Line Resolution
Day / Night Operation
Simple Installation



DI Solutions Company of SANYO Electric Co., Ltd., obtained Quality Management System ISO 9001 and Environmental Management System ISO 14001 certifications.

Caution: Please consult the instruction manual to ensure safe and proper operation of the product.

Distributed by:

SANYO

SANYO Electric Co., Ltd.
www.sanyosecurity.com

©2003 SANYO Printed in Japan '03.6.MA.

SMS062



Building security systems with greater peace of mind.

Vandal-Resistant Dome Cameras that Work Round the Clock

Housed in impact-resistant enclosures, the latest additions to SANYO's vandal-resistant series of dome cameras combine digital signal processing (DSP) circuitry and a 1/4-inch charge coupled device (CCD) to deliver the industry's highest horizontal resolution at 520 TV lines. Together with these and a host of other features, colour-B/W switching and low-light capability for day/night surveillance and an all-in-one design for easy installation make these cameras ideally suited to a broad range of security applications.

Rugged Construction

Tough Die-Cast Aluminum Housing

Housed in an exceptionally tough die-cast aluminum enclosure for extra durability under the most demanding of conditions. To protect against tampering, the fixing screws of the enclosure cover have a unique shape that prevents it from being opened with ordinary tools.

Polycarbonate Dome for High Impact Resistance

Together with the rugged die-cast aluminum enclosure is a polycarbonate dome with excellent impact-resistance characteristics to provide a formidable defense against deliberate attacks intended to disable the camera.

Weatherproof Design

IP66 Rated Enclosure

The camera's protective enclosure safely meets the IP66 standard for resistance against debilitating water and dust.

High-Performance Imaging and Optics

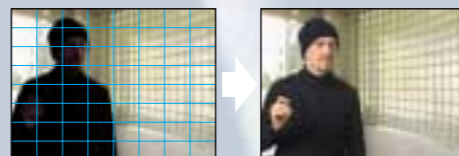
520 TV Line Resolution

Features SANYO's DSP circuitry and a high performance 1/4-inch CCD for an industry-leading horizontal resolution of more than 520 TV lines. Delivers sharp, crisp images for greater precision in surveillance under a varied range of conditions.



Sophisticated Backlight Compensation

Both models feature two selectable backlight compensation modes: multi-spot photometry (applied to the whole screen) and center-focus photometry (applied to the central portion only).



Built-In Varifocal Zoom Lens

Features a high-performance 2x zoom varifocal (2.8 to 5.8 mm) lens. SANYO's varifocal lens cameras eliminate the bother of having to choose the right lens for different installation sites, as in the case of fixed-focal lens cameras.



Day and Night Operation

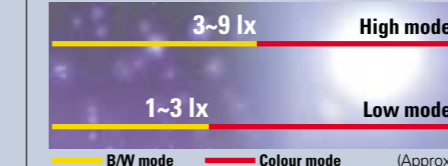
Automatic Colour-B/W Switching

Providing both daytime and nighttime shooting capabilities, the camera automatically switches between colour and B/W imaging modes in response to subject brightness. A HI-LOW switch enables selection of the switchover point between colour and B/W modes. Minimum required illumination in B/W mode is an impressive 0.06 lux at F1.4.

Proprietary auto-switching infrared cut filter



Switchover point



Manual Switching Options

In addition to automatic switching, wiring can be performed enabling manual switching for camera operation solely in colour or B/W mode irrespective of ambient lighting conditions.

Simple Installation

Surface or In-Ceiling Mounting

Each vandal-resistant dome series camera comes with everything you need for easy mounting and installation. Choose from two installation types: Surface and In-Ceiling.

Adjustable Viewing Angle

Manual adjustment of the camera's viewing angle allows for 180 degree panning in the horizontal plane and 90 degree tilting in the vertical plane. The viewing angle is easy to adjust even after installation.



Runs on AC or DC Power Sources

All vandal-resistant dome cameras can operate on either 12 V DC or 24 V AC (50 Hz). Switching to the correct mode occurs automatically when power is supplied.