

SANYO

DSR-M804P 4-channel PAL/NTSC

DIGITAL NETWORK SOLUTIONS

Digital Video Recorder With Built-in QUAD Compressor

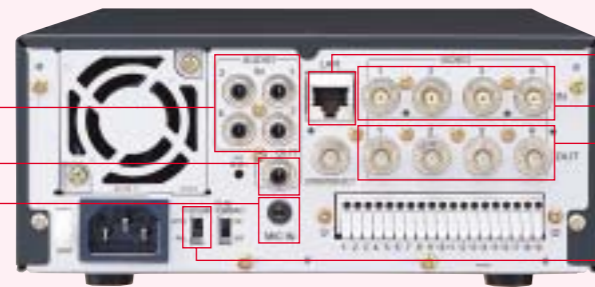
Two-week nonstop recording with standard picture quality
 With 4ch in/out terminals for a 4-screen display
 Exclusive in/out terminals for audio recording and playback
 Compact size of 210 mm width
 Remote surveillance and operation via network

Half Rack Width TWO-WEEK NONSTOP RECORDING



Rear View

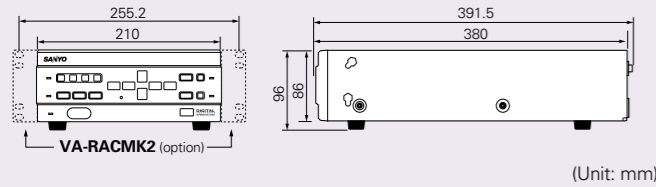
Audio input terminals
 Audio output terminal
 Microphone input terminal



100Base-TX Ethernet terminal
 Standard connection to PCs and HUB.
 Camera input terminals
 Camera output terminals
 Switching between PAL / NTSC is possible.

The device sends out clear sound and receives inputs from external devices.

DSR-M804P



MODEL	DSR-M804P
General	
Hard disk Capacity	120GB or 240GB (120GB x 2)
Picture resolution	PAL: 720 x 576, NTSC: 720 x 480
Compression	MPEG2 (Video), MPEG1 Audio layer2 (Audio)
Picture quality	3 levels (Super / High / Standard)
Recording type	Frame
Recording speed	PAL: 25 frames/sec, NTSC: 30 frames/sec
Screen display	1-screen display / 4-screen display
Number of cameras	4
Menu language	English / French / German / Spanish
Clock setup	Day / Month / Year / Hour / Minute / Second
Signal format	PAL / NTSC colour signal standard (Switchable)
Play back	Playback / Still / Search / Cue / Review / Frame advance / Slow
Search	
Time/Date Search	Search by time and date
Alarm Search	Search by alarm event list
Video	
Video input	1.0 V p-p / 75 Ω unbalanced (BNC x 4)
Video output	1.0 V p-p / 75 Ω unbalanced (BNC x 4)
Monitor output	1.0 V p-p / 75 Ω unbalanced (BNC x 1)
Audio	
Audio input	-8dBs, 27 kΩ unbalanced (RCA pin jack x 4)
Audio output	-8dBs, 600 Ω unbalanced (RCA pin jack x 1)
Microphone input	-60dBs, 10 kΩ unbalanced (3.5mm mini jack)
Interface	
LAN terminal	100BASE-TX (RJ-45)
USB terminal	For CompactFlash reader (Front)
Control signal	
RS-485	3 terminals: A / B / GND
Remote Control in	External switch connection
Clock adjust input	Normal open, Low level active
Clock adjust output	Normal 5 V, Low level active
Non REC output	Normal 5 V, Low level active
Alarm input	Normal open, Low level active x 4
Alarm output	Normal 5 V, Low level active
Alarm reset input	Normal open, Low level active
Warning output	Open collector (500mA), Low level active
Full output warning	Open collector (50mA), Low level active
Series REC input	Normal open, Low level active
Series REC output	Normal 5 V, Low level active
Electrical	
Power source	120 V to 240 V AC, 50 / 60Hz
Current consumption	36 W 480 to 300mA
Physical	
Operating conditions	Temperature: 5°C to 40°C [41°F to 104°F], Humidity: 10% to 80%
Dimensions (W x H x D)	210 (W) x 96 (H) x 380 (D) mm
Weight (Approx.)	3.7Kg [8.2 lbs.]

*Specifications subject to change without notice

Warnings regarding HDDs

- Do not attempt to install or replace a HDD on your own. You cannot use these HDDs on PCs.
- The unit may be damaged if it is exposed to an impact or vibration, or the power plug is disconnected during operation.
- Sanyo will not be held liable for any data loss due to an HDD error or a failure during recording.

* "Microsoft" and "Internet Explorer" are registered trademarks or trademarks of Microsoft Corporation in the United States and/or other countries.
 * All other company and product names are registered trademarks and/or trademarks of their respective owners.

Horizontal resolution 520 TV Line compatible devices

Camera

Standard

1/3" Colour CCD DSP High-resolution Camera
VCC-6572P (12V DC type)
VCC-6574P (24V AC type)

Line-operate

1/3" Colour CCD DSP High-resolution Camera
VCC-6570P (220-230V AC type) **New**

High-sensitivity

1/3" Colour CCD DSP High-resolution Camera
VCC-6592P (12V DC type)
VCC-6594P (24V AC type) **New**

Day/Night

1/3" CCD DSP High-resolution Day/Night Camera (Colour + B/W)
VCC-4592P (12V DC type) **New**
VCC-4594P (24V AC type) **New**

Recorder

16ch Digital Video Recorder **DSR-3016P** **New**
 9ch Digital Video Recorder **DSR-3009P** **New**

Zoom

SSP coaxial camera control compatible
 1/4" Colour CCD DSP High-resolution Auto Focus Zoom Camera
VCC-ZM300P (12V DC / 24V AC dual type)

SSP coaxial camera control compatible

1/4" Colour CCD DSP High-resolution Day/Night Auto Focus Zoom Camera (Colour + B/W)
VCC-ZM400P (12V DC / 24V AC dual type) **New**

Pan Tilt Zoom

1/3" Colour CCD DSP High-resolution Speed Dome Camera
VCC-9300P (24V AC type)

Day/Night

1/4" Colour CCD DSP High-resolution Day/Night Speed Dome Camera (Colour + B/W)
VCC-9400P (24V AC type) **New**

Vandal Proof Dome Camera

1/4" Colour CCD DSP High-resolution Day/Night Vandal Proof Dome Camera (Colour + B/W)
VDC-D1185VP (12V DC / 24V AC dual type) **DAY NIGHT**

Day/Night

1/4" Colour CCD DSP High-resolution Day/Night Vandal Proof Dome Camera (Colour + B/W)
VDC-D2185VP (12V DC / 24V AC dual type) **DAY NIGHT**

Day/Night

1/4" Colour CCD DSP High-resolution Day/Night Vandal Proof Dome Camera (Colour + B/W)
VDC-D2185VP (12V DC / 24V AC dual type) **DAY NIGHT**

Monitor

19" High-resolution Colour Video Monitor **VMC-8619P**
 14" High-resolution Colour Video Monitor **VMC-8614P**

SSP compatible devices

SSP System Unit

SSP System Controller
VSP-8000 **New**

SSP Signal Converter
VSP-CB10 **New**

SSP Signal Receiver
VSP-RV200 **New**

Recorder

Digital Video Recorder **DSR-3000P** **New**
 Digital Real Time VCR **DTL-4800P**

960-hour Recording + Real Time VCR
 *The optional VZU-485232C board is required
SRT-8960P **New**

40-hour Recording + Real Time VCR
 *The optional VZU-485232C board is required
SRT-8040P **New**

960-hour Recording S-VHS/VHS Time Lapse VCR
TLS-S8000P **New**

Camera

1/4" Colour CCD DSP High-resolution Speed Dome Camera (Colour + B/W)
VCC-9300P

1/4" Colour CCD DSP High-resolution Day/Night Speed Dome Camera (Colour + B/W)
VCC-9400P **DAY NIGHT** **New**

1/4" Colour CCD DSP High-resolution Auto Focus Zoom Camera
VCC-ZM300P

1/4" Colour CCD DSP High-resolution Day/Night Auto Focus Zoom Camera (Colour + B/W)
VCC-ZM400P **DAY NIGHT** **New**

1/3" Colour CCD DSP High-resolution Camera
VCC-6975P

960-hour Recording Time Lapse VCR
 *The optional VZU-485232C board is required
TLS-1960P **New**

24-hour Recording Time Lapse VCR
 *The optional VZU-485232C board is required
TLS-9924P **New**

24-hour Recording Time Lapse VCR
 *The optional board is required
TLS-4024P **New**



Video Imaging Systems Division of Sanyo Electric Co., Ltd. obtained Quality Management System ISO9001 and Environmental Management System ISO14001 certifications.

***Caution:** please consult the instruction manual to ensure safe and proper operation of the product.

Distributed by:

SANYO

SANYO Electric Co., Ltd.
 www.sanyosecurity.com
 © 2003 SANYO Printed in Japan '03.07. AP
 SMS-060

DSR-M804P 1-channel PAL/NTSC

DIGITAL
NETWORK SOLUTIONS



A DVR with four-screen recording function. Digital processing allows for quick retrieval. Features two-week nonstop recording with standard picture quality. Comes with audio in/out terminals and supports networking as well.

Compact, but boasting Full Capabilities with 4ch In/Out Terminals

DSR-M804P has a compact body, suitable for convenience stores and casinos. Its digital recording with four independent in/out terminals enables outstanding picture quality and clear sound. It allows one-week nonstop recording in high-definition quality and two-week nonstop in standard quality. Supports live video image surveillance and remote control via a network*.

*With the VA-SW804, sold separately.

Playback and Image Retrieval while Video Recording

DSR-M804P can record at 25 frames/sec (PAL) and allows more than 168 hours of recording time with 720 x 576 pixels (PAL). In addition, recorded images can be played back simultaneously and impeccable surveillance is possible even while retrieving and playing back desired video images.

Built-in 120GB HDD

The drive offers enough space for two-week (336 h) non-stop recording with standard picture quality. An expansion bay allows installation of another HDD. Adding a 120GB HDD enables more than four weeks (672 h) of nonstop recording. Added HDD can also be used for mirror recording* for data back-up. For further details about HDD expansion, contact the place of purchase.

*Mirror Recording

DSR-M804P each come with one HDD unit. By adding an optional HDD of the same capacity, it is possible to record the same video on two HDDs, thus allowing for a backup.

PICTURE QUALITY	SUPER 720 x 576 pxl	HIGH 720 x 576 pxl	STANDARD 720 x 576 pxl
CAPACITY	84 h	168 h (1-week)	336 h (2-week)
120GB			
240GB	168 h (1-week)	336 h (2-week)	672 h (4-week)
Bit Rate (Average)	2.6Mbps	1.2Mbps	0.5Mbps

Audio Recording with 4 Inputs

DSR-M804P comes with audio terminals for 4 inputs and one output. The implementation of MPEG1 Audio Layer2 allows recording and playback of clear sound. Audio can be easily downloaded over a network, along with video images.

	Input	Audio Recording
Recording	CH1, CH2	CH1+CH2
	CH3, CH4	CH3+CH4
Live	Input	1Audio Output (Select from Audio Key)
		CH1+CH2
		CH1
		CH2
		CH3
		CH4
		OFF
Playback	CH1, CH2	CH1+CH2
	CH3, CH4	CH3+CH4
		OFF

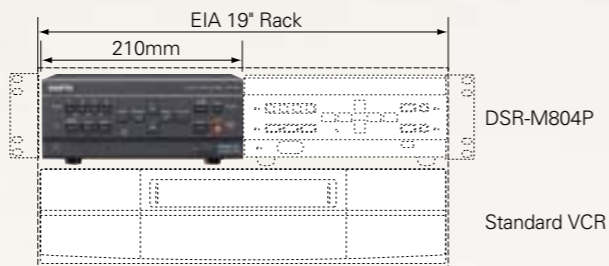
Playback of a single channel is not possible.

Reduction of Expenses

Unlike existing VCRs, this unit uses digital HDD recording, thus saving cassette handling time and freeing up space normally needed for tape storage. In addition, its compact-size body requires less area for an installation.

Compact Size of 210 mm Width

Digital recording is now available in a compact package of 210mm in width, which makes it possible to install two DSR-M804P units side-by-side in a EIA19" rack. It is an ideal solution for the limited spaces of convenience stores, or casinos where a large number of DVRs are needed.



Versatility in Recording

In addition to "Normal recording", which records live surveillance images, the "Timer recording" allows the user to program the recording. The unit also features a "Motion Sensor", which starts automatic recording when any movement is detected on the screen, and an "Alarm recording" that is triggered by an external alarm signal. The combinations of "Timer recording" + "Alarm recording" and "Motion Sensor" + "Alarm recording" make the DSR-M804P a versatile machine.

Timer recording

Uniform daily programming and independent programming for each day of the week are both available. Moreover, holidays can be input by specifying the date and month for which Sunday programming is applicable.

Alarm recording

When an alarm signal is received from an external sensor, DSR-M804P will automatically start recording in the mode pre-determined by the user.

Motion Sensor

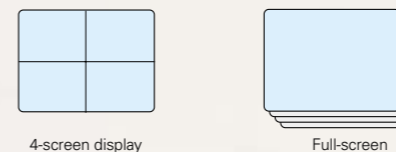
DSR-M804P comes with a built-in motion sensor. Different settings can be made for each camera image independently. The sensor can detect moving objects within the screen by picking up changes in brightness. The user can use this feature to trigger an alarm recording.

Various Playback Functions

DSR-M804P features 6 playback functions: Playback, Still, Cue / Review (7.5x to 180x), Frame advance, Slow motion (1/8 to 1/2, forward and backward), and Search.

4-Screen Display

The unit is capable of displaying video images from 4 cameras on one monitor by splitting the screen. A full-screen display, either by using the sequential switching function or designating a channel, is also possible. The user can also select the display mode (full or split screen) for alarm situations.



Search Functions

The two search functions — "Alarm search" and "Date / time search" — call up desired images instantly.

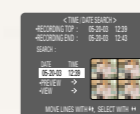
Alarm search

Recorded alarm images are retrieved from a list of alarm events and played back.



Date/time search

The user can designate date and time of recorded video images and play back retrieved images.



Security Lock

There are two levels of security lock — Administrators and Users. — offering users the best option for their security needs.

Buzzer

Depending on the user's preference, the unit can be setup to emit a warning buzzer when (1) there is an alarm; (2) HDD becomes full; (3) recording suddenly stops; (4) an abnormality occurs; (5) an operation button is pressed.

TV-System Switching between PAL / NTSC

A changeover switch in the back can transfer video signals of surveillance camera input / monitor output to PAL or NTSC format. (Note: this switch only route the video signal to an appropriate circuit and does not mean that the unit converts a NTSC input to PAL format, or vice versa.) Also, the AC power source is for 120 to 240V.

Other Features

- 30-day memory back-up
- Resume function
- End-of-medium alarm
- On-screen mode setting, menu languages built in: English / French / German / Spanish
- Built-in time date generator
- Auto repeat recording
- Monitor masking
- Alarm counter
- Automatic summer time adjustment
- Lifetime counter
- Through output of video
- Push-lock terminals for easy installation (refer to the rear panel photo)

This compact DVR excels in networking and expandability.

Built-in USB Terminal

The unit has a built-in USB terminal in the front. A CF card reader* allows the user to upload/download menu items and set up other DSR-M804P units.

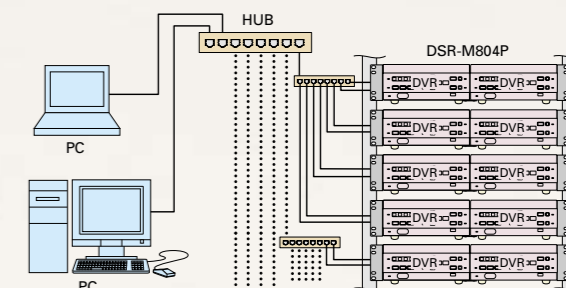
*For a validated CF reader, consult www.sanyosecurity.com.

Built-in Control Terminals

These terminals make it possible to control the DSR-M804P using Resistive Ladder Remote Controller.

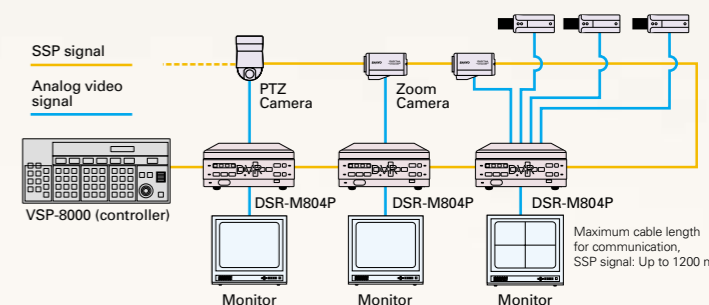
Also Comes with a LAN Terminal

There is a built-in 100Base-TX LAN terminal, allowing remote surveillance / control from PC via LAN with the VA-SW804 (sold separately).



Built-in RS-485 Terminals

The unit has built-in RS-485 terminals for SSP (Sanyo Security Serial Protocol) usage. Separately sold system controller VSP-8000 can control up to 128 units of DSR-M804P.



Remote surveillance/control available

DVR Utility Software VA-SW804 (sold separately)



By installing VA-SW804 in PCs, the user can build a remote surveillance system that links DVRs and PCs via LAN. In addition to each setup, recording, retrieval, playback and live surveillance are available. Moreover, up to 1000DVRs in a network can be controlled by a PC. Complete security involves an ID-password, regulating operational limits in 4 steps. In addition, the software features a function that verifies original data by detecting any alteration to recorded images.

System environment

	Multi Monitoring	Single Monitoring
System	Pentium® 4 3GHz or faster	Pentium® III 800MHz
CPU*	IBM PC / AT or Compatible	
Memory	256MB	
Interface	100Base-TX	
Display	XGA (1,024 x 768 pixel), 16-million colour or greater	
OS	Windows® XP Professional	

*For multiple split-screen monitoring, CPU clock frequency of 750MHz is required per screen.