

Digital Made ~~Easy~~ Easier!

VQ Series



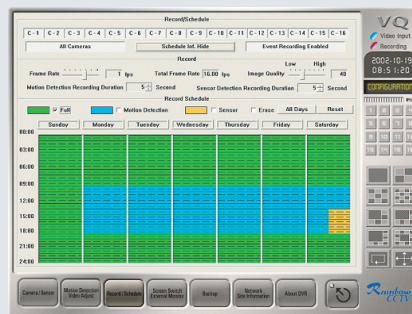
Digital Video Recorder

Rainbow's new DVR line Engineered With Patented Visual Q Technology

- **Large Storage Capacity** - 320 GB standard (expandable)
- **Fast Recording Speed** - 200 ips (images per second)
- **High Resolution** - 640 x 480
- **Reliability** - High quality components used with extensive system reliability testing
- **Patented Technology** - Visual Q Technology provides simple set-up and retrieval of recordings



VQ's user-friendly interface provides access to all functions



Scheduling made easy.
Just drag and click.



Frame by frame view
of recorded images

- Patented Anti-Frag Technology continuously stores video data without leaving unnecessary holes or fragments in the memory/storage space.
- Simultaneous Record, Playback, Remote Access, and Live Display
- Remote client software (included) allows for live viewing, playback of recorded data, and remote administration of the DVR settings
- Easy point and click interface
- Uses adaptive MJPEG compression for maximum use of storage capacity
- Motion Detection (Full, Grid, Custom)
- Visual Flag™ hot key for marking important events for easy recall during playback
- User-friendly software running on Windows® XP Pro platform for maximum stability
- On board P/T/Z controls (Protocols for: Li-Lin, Panasonic, Pelco D, Samsung, and Vicon (This is only a partial list))
- CD-RW standard
- Watchdog Function continuously checks the system and recovers it from unexpected failure
- Watermark technology protects against forgery

Rainbow® CCTV

TECHNICAL SPECIFICATIONS

Model	VQ8 (8-channel)	VQ16 (16-channel)
Max Video Display	240 i/s	240 i/s
Max Video Recording	200 i/s	200 i/s
Resolution	640x480 Display / 320x240 Recording	640x480 Display / 320x240 Recording
Average Frame Size	2~5 Kb	2~5 Kb
Video Compression	Adaptive MJPEG	Adaptive MJPEG
Screen Split Mode	1, 4, 8	1,4,6,8,9,10,13,16
Remote Monitoring	LAN & Internet	LAN & Internet
Remote Configuration	LAN & Internet	LAN & Internet
Motion Detection	Automatic Adjustable Threshold Setting	Automatic Adjustable Threshold Setting
Max Camera Inputs	8	16
Max Video Inputs	8	16
Max Video Outputs	4	4
Video Matrix Switcher	8x4	16x4
Max Digital Sensors	8	8
Max Digital Controls	8	8
Pan/Tilt/Zoom Control	Yes	Yes
Joystick Control	Yes	Yes
CD-ROM Drive	32X CD-RW	32X CD-RW
Watchdog Function	Auto Reset	Auto Reset
Operating System	Windows® XP Pro	Windows® XP Pro

Supplied Accessories:

106Key PS/2 Keyboard, A4Tech Wheel PS/2 Mouse, and remote site software. (Note: Monitor not supplied)

Minimum PC Requirements for Remote Site Software: Pentium III processor, 700MHz, 128MB of memory; 1024x768 display setup; 32 bit color display; 32 MB video card.

Recommended VGA Cards:

ATI 32M or better.

Electrical

Input Voltage: 100-240 VAC switchable, 50/60 Hz
 Power: 300W
 Signal System: NTSC/PAL
 CPU: Intel Pentium 4 1.8GHz or better
 Motherboard: Intel D845EBG2 PGA 478
 HDD: 2 x 160GB 7200RPM IDE
 RAM: Samsung PC133 128M or better
 VGA Card: ATI Radeon 7000 32MB
 Main Memory: 256MB DDR RAM
 LAN Card: 3COM 905BL
 Capture Board: (1 or 2) 4CH
 Back Panel: 8 or 16CH

Mechanical

Connectors:

BNC Video Inputs
 6-pin MiniDIN PS/2 mouse and keyboard
 Push-in Sensor and Control outputs
 9-pin D-type COM 1 and 2
 15-pin D-type SVGA monitor port
 25-pin D-type Printer port
 BNC 4 ports available for Analog or CCTV monitor
 RJ45 TCP/IP, LAN / WAN
 USB 4 ports available for external backup device
 S-Video 1 output available for external Monitors

General

Operating Temperature: 41° - 104° F (5° - 40° C)
 Relative Humidity: Maximum 80% non-condensing
 Dimensions: 48.0 W x 17.8 H x 44.0 D (cm)
 Unit Weight: 23kg (50 lb)

Certifications

CE, Class A | UL Listed | ISO 9000 | FCC, Class A
 10 Segment Reliability Test Program

Patented Technology

Anti-Frag® File System | Visual Q® Rapid Search

Options

VQ480U Upgrade to 480GB (160GB HDD x3)
 VQ960U Upgrade to 960GB (160GB HDD x6)
 VQMOD Add internal 56K modem
 VQSCSI Add SCSI card for use with external devices

Note: options are factory installed. Adding these options at a later time will require the unit to be sent to Rainbow. Labor charges will apply in addition to the upgrade price.



Rainbow CCTV
 2495 Da Vinci • Irvine, CA 92614
 800-654-5367 • 949-260-1599
 www.rainbowcctv.com