

*CCTV product guide 2008  
United Kingdom*



*Outstanding products - exceptional value*

**PLEXITY**  
C C T V   S Y S T E M S

Plexety CCTV products provide high quality, dependable security systems.

Produced and supported by Dowshu Electronica Ltd., the Plexety range offers businesses a professional, yet affordable, CCTV solution.

**PLEXETY**  
CCTV SYSTEMS

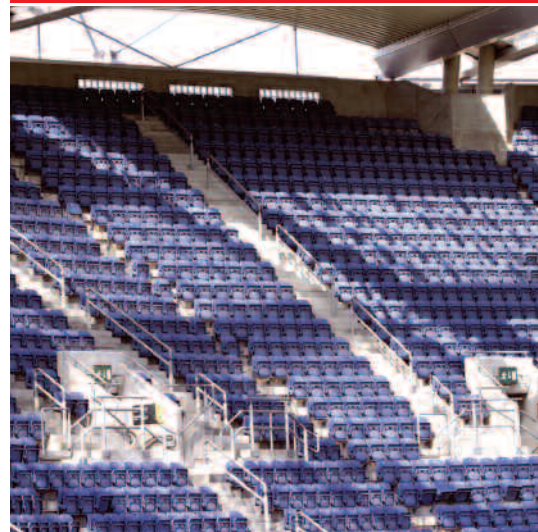
## Plexety provides:

- Thorough technical support, sales and customer service.
- 21 day product exchange.
- Total stock availability on all items listed.
- 2 year warranty on all products including PTZ domes.
- **Credit for cash™** purchase (page 11).
- System design and specification service.
- Comprehensive engineering training.
- Demonstration facilities.
- Fixed price product servicing.



## Dowshu assurance:

- Established in 1998, Dowshu is an experienced CCTV manufacturing company.
- Dowshu products are specialist and lead the market - a direct result of innovative product development.
- Dowshu products are installed and proven in countless high profile applications, for many prestigious customers.
- All Dowshu products have a unique and extensive feature set.
- Dowshu leads the market in reliable, high quality design - making Dowshu products the first choice amongst engineers worldwide.
- Dowshu products are simple and intuitive to use, making their set up and operation easy.



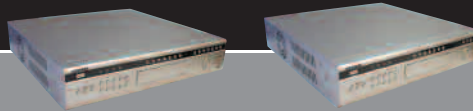
## 4 Channel DVRs

*Page 4 & 5*



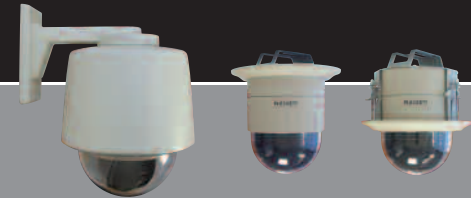
## 8 & 16 Channel DVRs

*Page 4 & 5*



## High Speed Domes

*Page 6 & 7*



## Infra-Red Cameras

*Page 8 & 9*



## Fixed & Vandal Resistant Domes

*Page 10*



## Information

*Page 11*

**Credit for cash™**  
 DELIVERY  
 PRICING (Ireland)  
 TERMS AND CONDITIONS  
 WARRANTIES  
 PAYMENT  
 21 DAY PRODUCT EVALUATION  
 REPAIRS AND RETURNS

# 4 200 series DVRs

- Embedded Linux operating system
- Mouse, key panel & remote control
- MPEG-4 compression
- Live, record, playback, back-up & network
- 400/200/100fps live (16/8/4 channel)
- Video output: 1x VGA, 2x composite (4ch), 3x composite (8 & 16 ch)
- Audio input & output
- USB storage (all), network & CD-RW or DVD-RW (8 and 16 channel only)

4 channel 160Gb



€445.00 / £311.50



8 channel 320 Gb



€995.00 / £696.50



16 channel 640 Gb



€1,195.00 / £836.50



## Part numbers

204-160

208-320

216-640

Recording resolution

Video input / loop output

Sensor input / relay output

Display mode

Storage media

Recording mode

Communication port

Network

Size

Weight

Power

Operating temperature

Operating humidity

D1 (704 x 576), half D1, CIF

4 / 0 BNC composite

4 input / 1 output

1/4/sequential/ PIP

2x HDD, 3 USB (USB 1.1)

Motion detection, sensor, constant & time lapse - 100fps max.

RS-232C, RS-485

Y (available)

380W x 308D x 65H

4.0Kg with single HDD

100~240vAC 50/60Hz

0.0°C ~ 40.0°C

10 ~ 80% RH

D1 (704 x 576), half D1, CIF

8 / 8 BNC composite

8 input / 4 output

1/4/7/9/sequential/PIP

3xHDD, 2xUSB 1.1 rear, USB 2.0 front

RS-232C, RS-485

Y (available)

430W x 440D x 90H

9.0Kg with single HDD

100~240vAC 50/60Hz

0.0°C ~ 40.0°C

10 ~ 80% RH

D1 (704 x 576), half D1, CIF

16 / 16 BNC composite

16 input / 4 output

1/4/7/9/13/16/sequential/PIP

3xHDD, 2xUSB 1.1 rear, USB 2.0 front

RS-232C, RS-485

Y (available)

430W x 440D x 90H

9.0Kg with single HDD

100~240vAC 50/60Hz

0.0°C ~ 40.0°C

10 ~ 80% RH



*Plexety 4 channel DVR*



*4 channel rear view*

T: 01925 232266 F: 01925 570666 [www.dowshu.com](http://www.dowshu.com) [sales@dowshu.com](mailto:sales@dowshu.com)



*Plexety 16 channel DVR*

*8 channel rear view*



*16 channel rear view*



# 6 High speed domes

- Day/night external, colour internal
- 1/4" Sony Super HAD
- 520TVL (752 x 582 effective pixels)
- 23x zoom (3.4~88.4mm) 10x digital
- 165 presets 16 character label
- 8 tours of 60 presets
- 4 privacy zones
- 4 alarm inputs 2 relay outputs
- RS-485 comms & multiple protocols
- Auto scan - programmable

Internal 23x PTZ dome - Flush Mount



External 23x PTZ dome - Wall Mount



## Part numbers

## PCD-23Z (colour)

## PDND-23Z (day/night)

Bracket included  
Construction & dimensions / weight  
Min. illumination / Luminance S/N  
Video output  
Pan angle / speed / accuracy  
Tilt angle / speed / accuracy  
Patterns  
Sector  
Set-up  
Communications / Protocols  
Power consumption / supply  
Motor  
Temperature: storage / operating

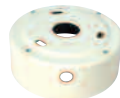
Surface	Wall
ABS body, polycarbonate: 147dia x 190Hmm / 1.9Kg	Aluminium + anticorrosive paint 190dia x 307Hmm / 5.7Kg
0.6Lux (50 IRE) / greater that 50dB	0.6Lux (50 IRE) Night: 0.1Lux (ICR on) / > 50dB
1.0 v p~p, 75Ω	
360° endless, manual 0.5°~100, 200°/s (64 step), to preset 10°~300°/s / 0.024°	
-2°~90°, manual 0.5°~100, 200°/s (64 step), to preset 10°~300°/s / 0.024°	
8 programmable patterns of 480 seconds total	
8 selectable sectors with 16 characters	
On screen display menu	
RS-485 / built-in Pelco-D, Pelco-P & Maxpro	
18W Max. / 18~32vAC 50/60Hz 850mA	
Stepper / 1/8 micro step	
20.0°C ~ 60.0°C / -10.0°C ~ 50.0°C	



*Plexety external dome shown with Wall Mount - included*



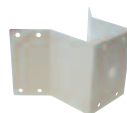
*Vertical adaptor*



*Bracket adaptor*



*Goose neck*



*Corner adaptor*



*Pole adaptor*

## Mounts & brackets <sup>7</sup>

Goose neck DDB-G €70 / £49

Vertical adaptor DDB-V €40 / £28

Corner adaptor DDB-C €60 / £42

Bracket adaptor DDB-A €70 / £49

Pole adaptor DDB-P €60 / £42



T: 01925 232266

F: 01925 570666

[www.dowshu.com](http://www.dowshu.com)

[sales@dowshu.com](mailto:sales@dowshu.com)



*Plexety internal high speed dome shown with False Ceiling Mount option*



*Plexety internal high speed dome shown with Surface Mount - included*

False ceiling DDB-F €70 / £49



*Surface Mount*

**PLEXETY**  
CCTV SYSTEMS



# 8 Infra red cameras

- 1/3" Sony Super HAD
- Integrated IR LED array for night time video capture
- Photo sensitive LED switching
- Aluminium waterproof enclosure
- Automatic white balance
- Automatic gain control
- Automatic electronic shutter
- Automatic back light compensation
- Outdoor sun shield

External infra red camera



€65.00 / £45.50

External infra red varifocal camera



€150.00 / £105.00

## Part numbers

## HRWPCC-12IR

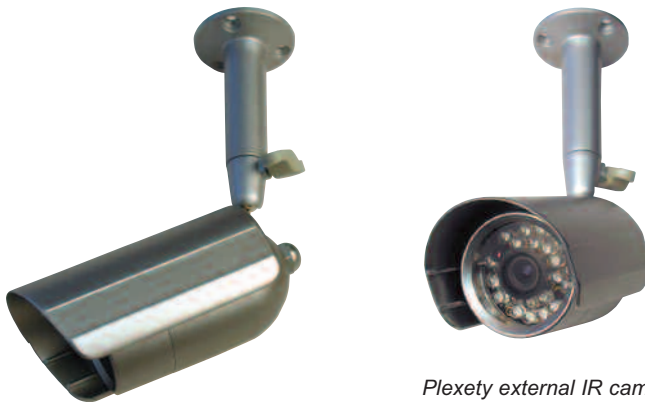
## HRIR-VF

Effective pixels  
Resolution  
S/N ratio  
Minimum illumination  
LED switch level  
Electronic shutter  
Automatic gain control  
Back light compensation  
Lens (other options available on request)  
IR-LED  
Audio  
Power input / consumption  
Operating temperature / humidity  
Weight

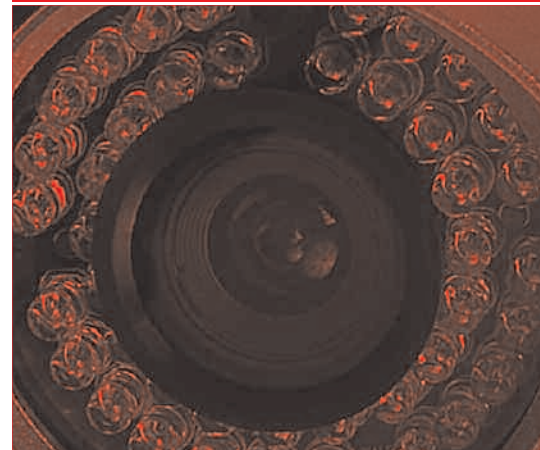
PAL 500H x 582V
420TVL
48dB
0.1 Lux/F1.2 IR off, 0 Lux IR on
1 ~ 3 Lux on, 5 ~ 6 Lux off
1/50~1/100,000 sec PAL
On/off
On/off
3.6 m
Wave length: 850nm
Optional
12vDC / 120mA to 300mA with LEDs on
-10.0°C ~ 50.0 °C RH95% Max
800g

PAL 752H x 582V
540TVL
48dB
0.3 Lux/F2.0 IR off, 0 Lux IR on
1 ~ 3 Lux on, 5 ~ 6 Lux off
1/50~1/100,000 sec PAL
Automatic
Automatic
DC auto-iris 4.0~9.0mm vari focal
Wave length: 850nm
Optional
12vDC / 150mA to 300mA with LEDs on
-10.0°C ~ 50.0 °C RH95% Max
960g





*Plexety external IR camera*



T: 01925 232266 F: 01925 570666 [www.dowshu.com](http://www.dowshu.com) [sales@dowshu.com](mailto:sales@dowshu.com)



*Plexety external IR varifocal camera*

**PLEXETY**  
CCTV SYSTEMS

# Fixed domes

- Colour 1/3" Sony HAD CCD
- Varifocal, DC AI lens 4.0~9.0 mm
- Tamper proof - HRVPD-12VF only
- 12vDC / 24vAC power supply
- Automatic back light compensation
- Automatic iris
- Automatic white balance
- Automatic gain control
- Manual pan / tilt mechanism

Internal - white

€110.00 / £77.00



Internal - black

€110.00 / £77.00



External vandal resistant

€130.00 / £91.00

*Tri-axis camera mount*

## Part numbers

HRD-12VFW

HRD-12VFB

HRVPD-12VF

Tri-axis mount

Output signal

Effective pixels

Resolution

Lens (other options available on request)

Minimum illumination

Signal to noise ratio

Gamma correction

Electronic shutter

Sync mode

Power consumption

Operating temperature

Dimensions

Weight

No

1.0 v p-p, 75Ω

PAL: 752H x 582V

480TVL

Varifocal - DC AI 4.0~9.0mm

0.3 Lux / F1.2

50dB

0.45

Automatic

INT

120mA max

-10.0°C ~ 50.0°C RH95% Max

128mm diameter x 93mm

100mm diameter dome

410g

No

1.0 v p-p, 75Ω

PAL: 752H x 582V

480TVL

Varifocal - DC AI 4.0~9.0mm

0.3 Lux / F1.2

50dB

0.45

Automatic

INT

120mA max

-10.0°C ~ 50.0°C RH95% Max

128mm diameter x 93mm

100mm diameter dome

410 g

Yes

1.0 v p-p, 75Ω

PAL: 752H x 582V

480TVL

Varifocal - DC AI 4.0~9.0mm

0.3 Lux / F1.2

50dB

0.45

Automatic

INT

120mA max

-10.0°C ~ 50.0°C RH95% Max

138mm diameter x 92mm

96mm diameter dome

580 g

Dowshu is currently celebrating its tenth year in the CCTV industry and what better way to do so than to bring out a new CCTV range – **Plexety**.

Dowshu is unrecognisable from its humble beginnings, 10 years ago, when the Hurley brothers set up their CCTV business in Cork. The company still prides itself on maintaining its family values and remains independently owned and managed.

Dowshu has taken great pride in the delivery of new and innovative products, with an emphasis on solid, prompt, after sales service. The company has manufacturing sites in Ireland, South Korea and Taiwan and a centre of excellence for the design of software and hardware in China. Dowshu products are sold

throughout the world, but customers still receive the same personal service akin to that of the original company.

Dowshu's world leading products include multi-channel DVRs, comprehensive CCTV camera systems, CCTV management software, lenses and mass storage devices. All are used in a huge variety of applications world wide, from retail and banking to industrial and sporting. Whether small or large, all benefit from Dowshu's wide-ranging support service.

We hope our Plexety range is of interest to you. For any further information please contact us on the numbers below.

### INSTANT CREDIT ACCOUNTS

#### *Credit for cash™*

Dowshu will automatically open a credit account for the same value as your first cash purchase of Plexety products. For example, if you buy £5000 of Plexety products, we will set your on-going credit limit at £5000.

T: 01925 232266

F: 01925 570666

[www.dowshu.com](http://www.dowshu.com)

[sales@dowshu.com](mailto:sales@dowshu.com)

### WARRANTIES

All Plexety products are covered by our manufacturers warranty which includes defects in parts and workmanship. "Fair wear and tear" is not covered.

### PAYMENT

Payment is due within 30 days from the month end in which the goods were invoiced.

**We accept the following cards:**



### 21 DAY PRODUCT EXCHANGE

We will credit or exchange any items listed in this guide purchased from Dowshu within 21 days of the invoice date provided they are returned unused and undamaged and complete with their original packaging, manuals, connectors and any ancillary items.

### REPAIRS AND RETURNS

Please obtain a returns number from Dowshu before sending products back for repair or return. Please also have your invoice number available when you do so.

### TERMS AND CONDITIONS

Our standard terms and conditions apply. These can be viewed and downloaded from our website [www.dowshu.com](http://www.dowshu.com) or can be sent by post on request.

**PLEXETY**  
CCTV SYSTEMS



Plexety is a Dowshu group company and wholly Irish owned.

### **United Kingdom**

15 Harvard Court  
Quay Business Centre  
Winwick Quay  
Warrington  
Cheshire WA2 8LT

**T +44 (0) 1925 232266**

**F +44 (0) 1925 570666**

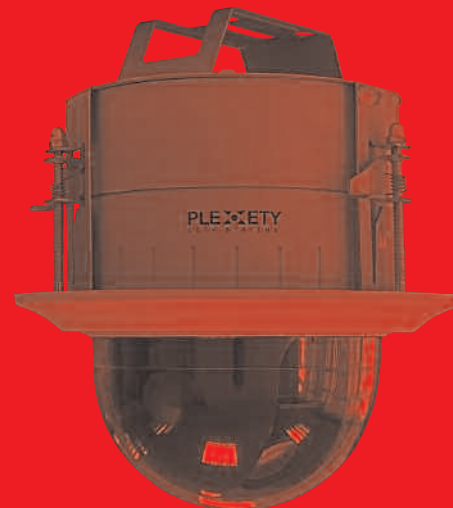
### **Ireland**

Airport East Business and Technology Park  
Cork  
Ireland

**T +353 (0) 21 432 3070**

**F +353 (0) 21 432 3024**

Product specifications, pricing and customer services are  
subject to change without notice.  
The information in this guide has been checked for accuracy.  
No liability will be accepted for any errors or omissions.



**Ireland** Cork and Dublin

**United Kingdom** Warrington

**South Korea** Seoul

**China** Shenzhen