

LL27 Series Infrared Illuminator

NARROW SPOT OR MEDIUM/WIDE FLOOD

Product Features

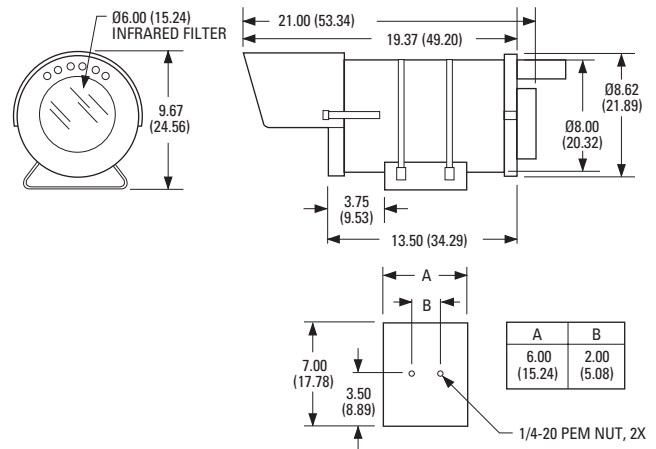
- 120 VAC or 230 VAC Input
- Automatic Photocell On/Off
- Accepts Readily Available Sealed-Beam Lamps
- Narrow Spot and Medium/Wide Flood Versions
- Air-Cooled for Longer Bulb Life



Pelco's **LL27 Series** infrared illuminator is designed to be used with low light level cameras with sensitivity in the IR spectrum (above 700 nm) for nighttime surveillance when a minimum of visible illumination is required. An IR "covert" filter transmits approximately 0.01 percent of the visible light spectrum. Automatic on/off operations are controlled by a photocell with a time delay feature that prevents the unit from being switched off by a momentary beam of light such as that from a headlight. This rugged weatherproof unit is equipped with a built-in sun visor, quick-release latches for ease of service, and sturdy mounting cradle.

Three models are available; the **LL27MF** with medium flood lamp, the **LL27WF** with wide flood lamp, and the **LL27NS** with narrow spot lamp for maximum distance coverage. All models are equipped with a highly efficient PAR56 sealed-beam lamp that provides an optimally uniform field of illumination, making the illuminator effective with shorter focal length lenses.

To ensure longer bulb life, all models are equipped with a built-in blower.



TECHNICAL SPECIFICATIONS

MODELS

LL27MF	Infrared illuminator with 500 watt, medium flood lamp
LL27NS	Infrared illuminator with 500 watt, narrow spot lamp
LL27NS-3	Same as LL27NS except 230 VAC input and 300 watt, narrow spot lamp
LL27WF	Infrared illuminator with 500 watt, wide flood lamp
LL27WF-3	Same as LL27WF except 230 VAC input and 300 watt, wide flood lamp

ELECTRICAL

Input Voltage	LL27MF, LL27NS, LL27WF LL27NS-3 and LL27WF-3	120 VAC, 50/60 Hz 230 VAC, 50 Hz
Power Requirements		Input voltage on/off controlled by photocell 515 watts for 120 VAC models, 317 watts for 230 VAC models
Power Cord		Supplied with grounded power cord; US standard (120 VAC) or European standard (230 VAC) plug

GENERAL

IR Filter		Coated pyrex, 0.190-inch (4.82 mm) thick, transmits approximately 0.01% of visible light.
Wavelength Transmission		≤1% at 715 nm and below ≤5% at 775 nm ±25 nm Avg ≥85% at 875-1200 nm
Average Life (Lamp)		3,500 hours at rated voltage (lamps sensitive to change in voltage)
Construction		6061 Aluminum
Finish		Gray polyester powder coat
Environment		-10° to 120°F (-23° to 49°C)
Unit Weight		
LL27LM		3.10 lb (1.41 kg)
LL27M		3.10 lb (1.41 kg)
LL27MF		11.77 lb (5.34 kg)
LL27NS		11.87 lb (5.38 kg)
LL27NS-3		11.82 lb (5.36 kg)
LL27WF		11.82 lb (5.36 kg)
LL27WF-3		11.71 lb (5.31 kg)
Shipping Weight		
LL27LM, LL27M		4 lb (1.81 kg)
All others		17 lb (7.70 kg)

CERTIFICATIONS/RATINGS

- CE compliant (models LL27NS-3 and LL27WF-3 only)
- UL Listed (except 230 VAC models)
- Meets NEMA Type 3R standards

RECOMMENDED MOUNTS

LL27LM	Bracket for mounting LL27 on Legacy® Series pan/tilts.
LL27M	Bracket for mounting LL27 on PT1200 Series pan/tilts.
EM22/MM22	Wall and ceiling/pedestal mounts.
PM2000/PM2010 with AH2000	Ceiling/pedestal mount with adapter.
WM2000 with AH2000	Wall mount with adapter.

REPLACEMENT LAMPS

PAR56NS	Narrow spot replacement lamp, 500W
PAR56NS-3	Narrow spot replacement lamp, 300W
PAR56MF	Medium flood replacement lamp, 500W
PAR56WF	Wide flood replacement lamp, 500W
PAR56WF-3	Wide flood replacement lamp, 300W

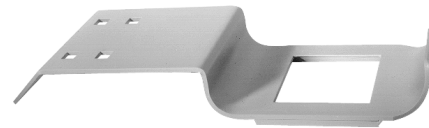
Minimum Lens Focal Length for Optimum Scene Illumination

Lamp Type	Camera Format			
	1/3"	1/2"	2/3"	1"
Narrow Spot	16 mm	25 mm	32 mm	50 mm
Medium Flood	12 mm	18 mm	24 mm	37 mm
Wide Flood	8 mm	12 mm	16 mm	25 mm

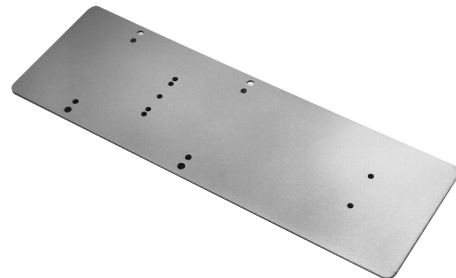
Typical Maximum Range for Usable Picture with an Infrared Sensitive Camera

Lamp Type	Approximate Angle of View	Distance (at f1.8)	
		120V, 500W	230V, 300W
Narrow Spot	12°H x 8°V	400 ft (121 m)	240 ft (73 m)
Medium Flood	26°H x 10°V	300 ft (91 m)	144 ft (43 m)
Wide Flood	40°H x 19°V	200 ft (60 m)	120 ft (36 m)

CAUTION: Prolonged direct exposure to the radiant energy from the illuminator can cause damage to the retina of the eye.



LL27LM MOUNTING BRACKET FOR LEGACY® SERIES



LL27M MOUNTING BRACKET FOR PT1200 SERIES PAN/TILT



Pelco Worldwide Headquarters:

3500 Pelco Way, Clovis, California 93612-5699 USA

USA & Canada Tel: (800) 289-9100 • FAX (800) 289-9150 • DataFAX (800) 289-9108

International Tel: (559) 292-1981 • FAX (559) 348-1120 • DataFAX (559) 292-0435

www.pelco.com

Legacy® is a registered trademark of Pelco. Specifications subject to change without notice. ©Copyright 2002, Pelco. All rights reserved.