



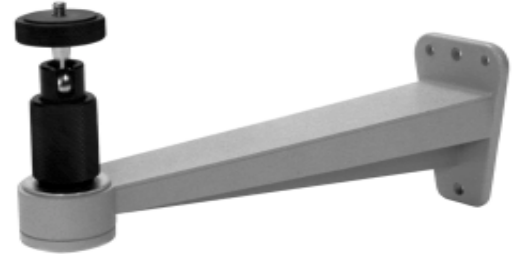
# PRODUCT SPECIFICATION

## CM1450 Mount WALL MOUNT, CAMERA



### Product Features

- Low Cost Wall Mount
- Decorator Styling
- Supports up to 7 Pounds (3.15 kg)
- Adjustable Swivel Head
- Accommodates Light-Duty Cameras
- Can be Adapted for Pole Mount Applications With Use of PA101 Adapter

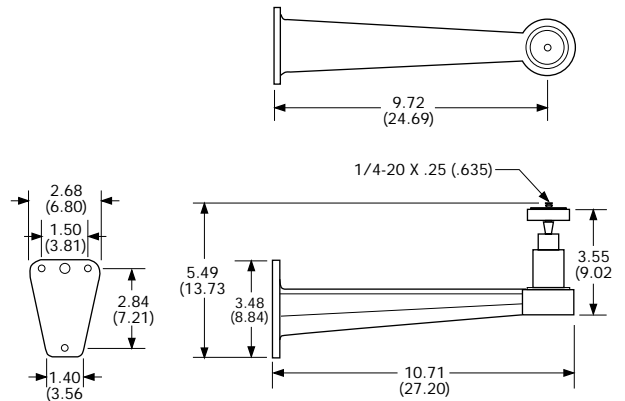


The **CM1450** is a light-duty camera mount designed for wall mount applications.

The **CM1450** is manufactured from aluminum and die-cast for low cost efficiency and features an easily adjustable swivel head which allows for 360-degree pan rotation and 90-degree tilt adjustments. The **CM1450** utilizes a set screw for final positioning of the swivel assembly.

The **CM1450** will accommodate cameras weighing up to 7 pounds (3.15 kg).

The **CM1450** can also be adapted for pole mount applications when used with a Pelco PA101 adapter.



NOTE: VALUES IN PARENTHESES ARE CENTIMETERS; ALL OTHERS ARE INCHES.



International Standards Organization Registered Firm ISO 9001 Quality System



# TECHNICAL SPECIFICATIONS

## MODELS

**CM1450** Light-duty camera mount with adjustable swivel head for wall mount applications

## RELATED PRODUCT

**PA101** Pole mount adapter for CM1450 mount. Minimum pole diameter 3 inches (7.62 cm). Stainless steel straps supplied. Strap length 28.5 inches (77.38 cm)

## MECHANICAL

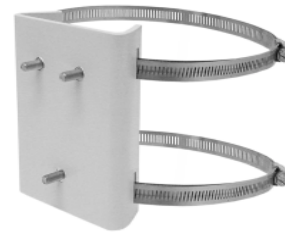
**Pan Adjustment** 360°  
**Tilt Adjustment** 90°  
**Locking Method** Set screw secures swivel assembly  
**Camera Mounting** 1/4-20 threaded stud and nut  
**Mounting Method** Secure with three 1/4-inch diameter fasteners to solid surface or use one 5/16-inch diameter and one 1/4-inch diameter fastener where wall studs are encountered. (Fasteners not supplied.)

## GENERAL

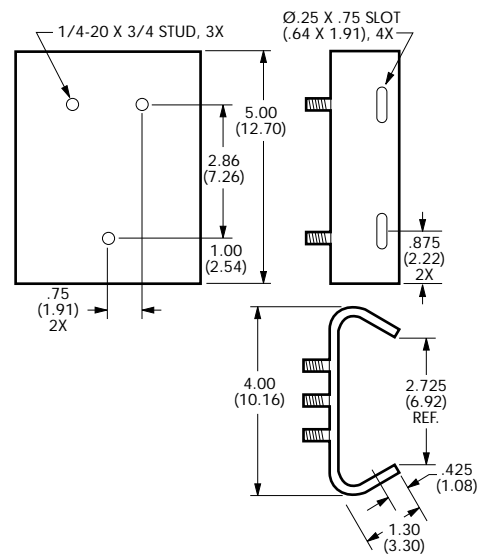
**Construction** Aluminum  
**Finish** Gray polyester powder coat  
**Maximum Load** 7 lb (3.15 kg)  
**Unit Weight**  
     **CM1450** 1.2 lb (0.5 kg)  
     **PA101** 0.88 lb (0.4 kg)  
**Shipping Weight**  
     **CM1450** 2 lb (0.9 kg)  
     **PA101** 2 lb (0.9 kg)

## CERTIFICATIONS

◆ UL listed to Standard 2044



PA1010 POLE ADAPTER



NOTE: VALUES IN PARENTHESES ARE CENTIMETERS; ALL OTHERS ARE IN INCHES.

PA101 DIMENSION DRAWING

■ Indicates change or addition since last revision.

Pelco • 3500 Pelco Way • Clovis, CA 93612-5699 • Pelco Online @ www.pelco.com  
 In the US and Canada: Tel (800) 289-9100 • FAX (800) 289-9150 • DataFAX (800) 289-9108  
 International Customers: Tel +1(559) 292-1981 • FAX +1(559) 348-1120 • DataFAX +1(559) 292-0435

Specifications subject to change without notice.  
 ©Copyright 2000, Pelco. All rights reserved.