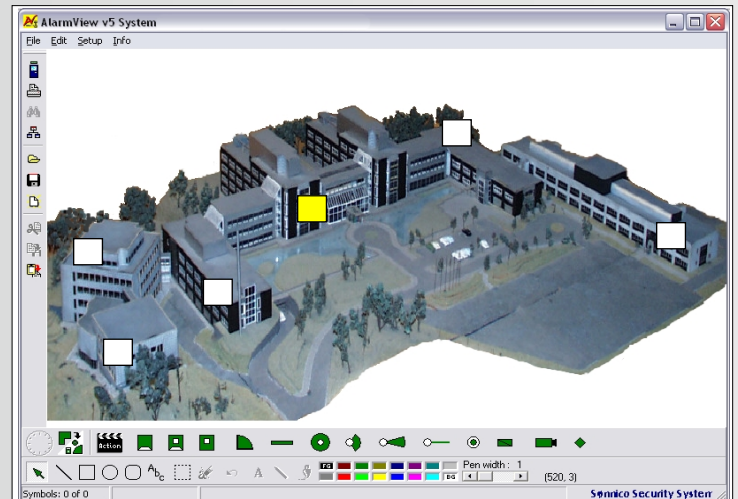


ALARMVIEW FOR WINDOWS

DYNAMIC GRAPHICAL ALARM TRACKING AND MANAGEMENT FOR ACCESS CONTROL APPLICATIONS

PCSC



AlarmView™ for Windows® is a software package designed for dynamic graphical presentation of alarms and conditions in any alarm and access control systems. A standard Windows setup utility guides the installation of the complete system, consisting of four separate programs:

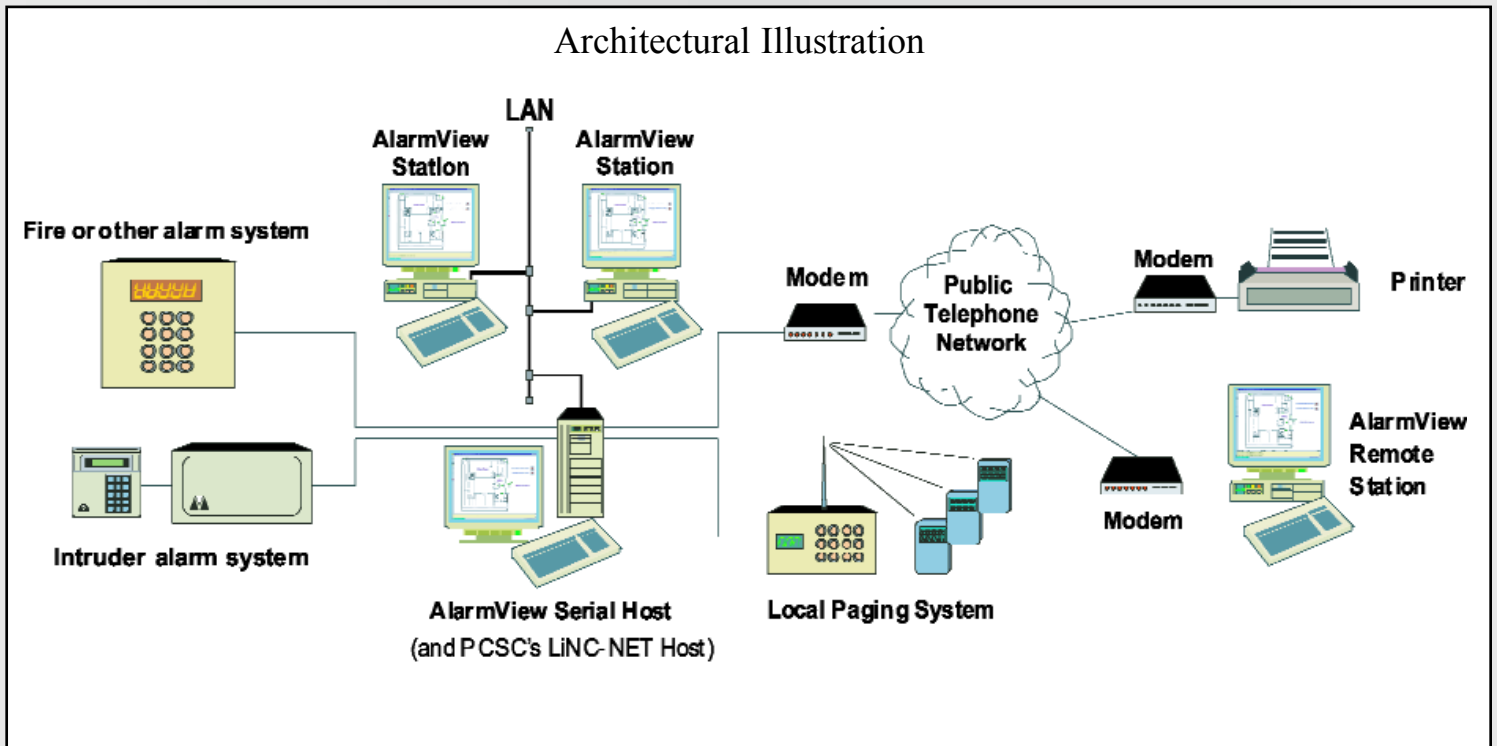
- AlarmView DB - System database creator
- AlarmView System - System configuration & maps design
- AlarmView RT - Real-time guard & operators routine
- AlarmView Report - Separate report generator for simple reports & scheduled history listings

AlarmView is designed to communicate on an interactive basis with PCSC's LiNC-NET® for Windows. Within this environment, AlarmView can control global outputs, open and close doors, acknowledge alarms and activate or deactivate cards.

Other alarm systems can also be serial connected to AlarmView and have their alarms and status changes presented using the same maps and pictures. In this configuration, AlarmView will look for and interpret messages sent by other alarm systems to their alarm/real-time/system printers. AlarmView can also present alarm symbols in several levels so that a 'zoom' effect is attained.

With its flexible communications features, AlarmView retransmits any messages to a wide variety of devices, including pager systems, fax machines and remote printers. AlarmView also supports multi-user configuration with AlarmView Host, which is the governing program for AlarmView workstations in a network system. Multi-user configuration supports common and/or individual alarms on each workstation.

Architectural Illustration



FEATURES

- Users can zoom to lower levels by clicking on Group Symbols until the Alarm Symbol level is reached
- Users can acknowledge alarms by clicking on Alarm Symbol
- Operators can open or close doors by clicking on the Door Symbol
- AlarmView's Action Button controls global outputs, executes command strings, opens pre-defined maps and executes other programs
- Activates or de-activates cards
- Time control and Time period display
- Alarm status reports
- Password protection
- Multi-user configuration with common and/or individual alarms on each workstation
- Seamless integration to LiNC-NET for Windows
- Acknowledges Alarms
- Manual Activation/de-activation of outputs
- CCTV Integration
- Pager Integration
- Multi-user Configuration
- System Configuration and Map Design