

MOBOTIX v25 6MP Indoor Camera



Technical specifications subject to change without notice

Perfect Protection. Professional Functions.

The new v25 camera offers as the first MOBOTIX vandalism indoor camera all outstanding MOBOTIX features. In addition to the standard lens options there is an on-wall audio kit with the suitable vandalism sets.

Technical specifications subject to change without notice. For more information on the v25 and on the entire range of MOBOTIX products, such as prices, manuals, video management software for computers and iOS devices, etc., please go to www.mobotix.com > **Products**. Or contact us by phone (+49 06302 9816-103) or email (sales@mobotix.com).



v25 Body

All inclusive

A complete standalone video surveillance system, including SD card or NAS event recording, alarming, professional video management (VMS) and video analysis functions like heat map and object statistics is available. The v25 body with MOBOTIX 6MP Moonlight day or night sensor technology is compatible with all standard lens options including the new 103° lens to cover a complete room without any blind spots. Also included is MxActivitySensor to avoid false alarms.



v25 with On-Wall Audio Kit

Easy Installation

Like all 6MP indoor models (i25, c25 and p25), the v25 can also be easily installed within minutes. v25 supports all standard lenses to ensure always the perfect solution for any indoor environment. Installed either in ceiling- or wall mount positions, the v25 can be adjusted in both directions, horizontally and vertically providing always the ideal viewing angle.



Perfect Protection

The new v25 6MP model will be supported with two vandalism kits including a stainless steel protection ring and reinforced dome cover. The new vandalism kits provide complete case protection up to IK10 of the v25 either for the standard v25 or equipped with the additional on-wall audio kit.

Technical Data

| | | | |
|--------------------------------|---|----------------------------------|---|
| Lens Options | B036 to B237 | Min. Light Sensitivity | Day Sensor: 0.1 lux at 1/60 sec Night Sensor: 0.02 lux at 1/60 sec |
| Image Sensors | 1/1,8" CMOS (6MP) Day (Color) or Night (B&W) | Sensor Resolution | 6MP: 3072x2048 pixels (Color/B&W) |
| Max. Frame Rate (MxPEG) | MEGA/HD: 30 B/s, QXGA: 15 B/s, 6MP: 8 B/s | Compression | MxPEG, M-JPEG, JPEG, H.264 (SIP video only) |
| DVR Recording | Internal: microSD Card External: PC/NAS (to 4 TB) | Audio (optional) | Sound recording using audio package |
| Operating Conditions | IP20, 0 to +40 °C, IK10 (with Vandalism kit) | Internal Sensors | Temperature, illumination, shock detector |
| Image Processing | MxActivitySensor, VMD, image correction, backlight, MxAnalytics | Software (free of charge) | MxManagementCenter, MOBOTIX App |


v25 Indoor Camera With 6MP Moonlight Image Sensor: Technical Data

| | |
|--------------------------------------|--|
| Model versions | v25-D036 (white), v25 body day and body night (body without lens, white or black) |
| Compatible MOBOTIX HD premium lenses | MX-B036 ultra wide angle • MX-B041 super wide angle • MX-B061 wide angle • MX-B079 standard • MX-B119 telephoto • MX-B237 distance telephoto |
| Operating conditions | Ambient temperature 0°C to 40°C (32°F to 104°F), protection class IP20 (protected from foreign bodies with diameters 12.5 mm or larger, not waterproof) |
| Intended use | Indoors • Not for use in areas at risk of explosions |
| Diameter | 143 mm (max. 148 mm with accessories) |
| Depth | 90 mm |
| Weight | <ul style="list-style-type: none"> • Approx. 360 g (v25 with lens B036 and ETH cable) • Approx. 600 g (v25 with lens B036, ETH cable and on-wall set with audio) |
| Image sensor | 1/1.8" CMOS sensor, 6MP (3072 x 2048), progressive scan |
| Lens tilting angle | 0° to -90° (desired position can be securely fixed using two screws) |
| Minimum light sensitivity | Color sensor: 0.1 lux at 1/60 sec; 0.005 lux at 1 sec B&W sensor: 0.02 lux at 1/60 sec; 0.001 lux at 1 sec |
| Maximum image size | 6MP (3072 x 2048 pixels) |
| Maximum frame rates MxPEG (fps) | 30@HD (1280 x 720), 30@MEGA, 15@QXGA, 10@5MP, 8@6MP |
| Maximum frame rates MJPEG (fps) | 15@HD (1280 x 720), 12@MEGA, 6@QXGA, 4@5MP, 4@6MP |
| Operation and display elements | Two buttons (protected from manipulation under the dome) • Two status LEDs |
| Audio | Optional v25 on-wall set with audio including integrated microphone and speaker; audio also possible via ExtIO (MOBOTIX accessory) |
| Image processing | MxLEO, backlight compensation, automatic white balance, image correction, panorama correction |
| Image formats | Freely configurable format 4:3/8:3/16:9 • User-defined formats (image cropping, e.g., 5MP, QXGA, full HD, MEGA) |
| Multi-streaming | Yes |
| PTZ | Digital pan/tilt/zoom, continuous 8x zoom |
| Intelligent video analysis | MxActivitySensor, video motion analysis, MxAnalytics (heat maps and counting corridor reports) |
| DVR | Via integrated microSD card • Externally on USB device • Externally on NAS (max. of 4 TB) • Separate live image feed and full image recording • MxFFS with archiving function • Pre- and post-alarm images • Automatic DVR surveillance including error notification |
| Alarm/event management | MxActivitySensor • Video motion analysis • Temperature sensor • Shock detector • Illumination sensor • Further sensors/IO via additional devices • Alarm notification via e-mail, FTP, VoIP |
| Video telephone | SIP client and server; two-way communication via on-wall set with audio or MX-ExtIO |

| v25 Indoor Camera With 6MP Moonlight Image Sensor: Technical Data | |
|---|--|
| Security | User/group management, SSL connection, IP address filter, IEEE 802.1x, intrusion detection, digital image signature, tamper detection |
| Protocols | IPv4, IPv6, HTTP, HTTPS, FTP, RTP, UDP, TCP, SNMP, SMTP, DHCP (client or server), NTP (client or server), SIP (client or server) |
| Interfaces | Ethernet (MxRJ45), MiniUSB • With optional MX-Bus-IO module with two additional signal outputs |
| Supply voltage | PoE (IEEE 802.3af, class 2), power consumption of max. 4.5 watts (without accessories) |
| Certifications | EMC (EN 55022, CISPR 22, EN 55024, EN 61000-6-1/2) • Further standards (FCC part 15 subpart B, CFR 47, AS/NZS 3548) |
| (Integrated) software functions | Digital zoom • Programmable exposure windows • Snapshot recording • Full feature recording (MxFFS archive, continuous recording, full image recording) • Time and event control • Time tables including holidays • Web functions • Logo generator • Flexible event logic • Master/slave arming • Multiple time-controlled privacy zones • Remote alarm notification • Programming interface/HTTP API |
| MOBOTIX Video Management Software (VMS) free of charge | Yes (MxManagementCenter MxMC, MOBOTIX App) |
| Accessories | <ul style="list-style-type: none"> - On-wall set including microphone and speaker - Vandalism set, also for the v25 with on-wall audio set - MX-OPT-IO3-INT expansion module, interface boxes, MX-ExtIO, NPA PoE Set |



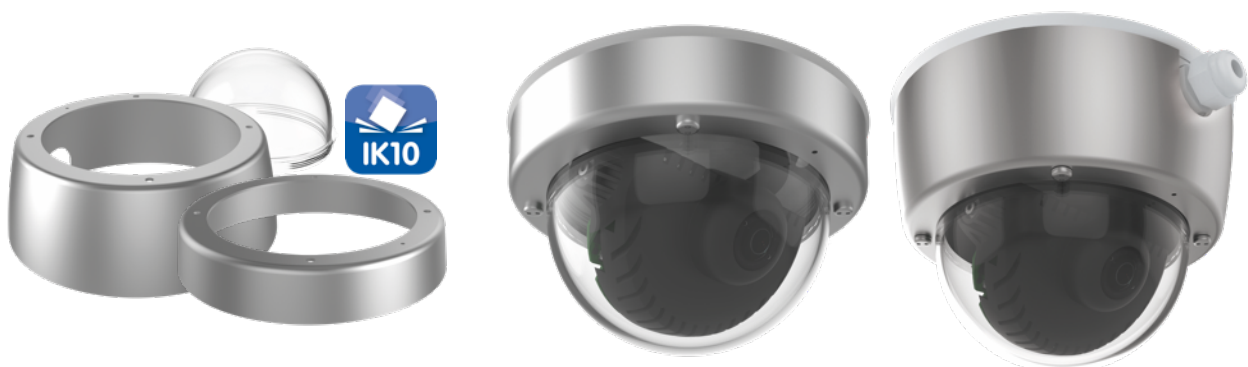


Easy To Install – On Any Ceiling

The light-sensitive HD premium lenses can be easily mounted on any body using the included red lens wrench. Using the further mounting materials included, the v25 can be quickly and easily mounted on all ceilings that can be equipped with a small cable guide opening for hidden Ethernet/PoE cables (behind ceiling tiles, for instance) and two-wire connections (only for optional external devices and sensors).

To mount the camera on a ceiling where the cable(s) cannot be hidden/laid under plaster (e.g., a concrete ceiling) and/or to expand the system to include a two-way communication function, MOBOTIX offers an **on-wall set with integrated microphone and speaker for the v25 (in black or white)**. Another advantage of this on-wall set is that the housing includes access-protected connectors for any two boards from the MOBOTIX interface boxes, allowing for expanded functionality.

With the **MxTubeMount**, the v25 (with or without on-wall set with audio) can be mounted to hang from unstructured ceilings such as in supermarkets, airports, warehouses, etc.



Optional Protective Equipment Makes The v25 An Attractive, Affordable Indoor Vandalism Camera

For public buildings and high-security environments like prisons or military facilities, MOBOTIX also offers a vandalism set for the v25 that includes a sturdy stainless steel ring (matt), a reinforced 3-mm polycarbonate dome and security screws.

The optional protective equipment provides complete, reliable protection for the housing (protection class IK10 planned) and is available in **two versions**, for a v25 with or without an on-wall set. The stainless steel ring for the on-wall system is designed to ensure that the audio functions remain available.



v25 – Technical Specifications

Security-Vision-Systems **MOBOTIX**

| Camera Variants | v25 Day | v25 Night |
|--|--|--|
| Lenses, Sensors | | |
| Fisheye Lens MX-B016 (Hemispheric, 180° x 180°) | – | – |
| Ultra Wide Lens MX-B036 (103° x 77°) | MX-v25-D036 (white) | Self-assembly with body |
| Super Wide Lens MX-B041 (90° x 67°) | Self-assembly with body | Self-assembly with body |
| Wide Lens MX-B061 (60° x 45°) | Self-assembly with body | Self-assembly with body |
| Standard Lens MX-B079 (45° x 34°) | Self-assembly with body | Self-assembly with body |
| Tele Lens MX-B119 (31° x 23°) | Self-assembly with body | Self-assembly with body |
| Distant Tele Lens MX-B237 (15° x 11°) | Self-assembly with body | Self-assembly with body |
| Super Tele Lens MX-B500 (8° x 6°) | – | – |
| CS-Vario Lens MX-B045-100-CS (39°-89° x 29°-65°) | – | – |
| Camera Module (body), lens can be ordered separately, housing color: white Camera Module (body), lens can be ordered separately, housing color: black | MX-v25-BOD1 MX-v25-BOD1-b | MX-v25-BOD1-N MX-v25-BOD1-N-b |
| Accessory: On-Wall Set with Audio, color: white | MX-MT-OW2-AUD | |
| Accessory: On-Wall Set with Audio, color: black | MX-MT-OW2-AUD-b | |
| Accessory: Vandalism Set for v25 without On-Wall Set (IK10) | MX-MT-v25-V | |
| Accessory: Vandalism Set for v25 with On-Wall Set (IK10) | MX-MT-v25-V-XL | |
| Image sensor with individual exposure zones | Color | B/W |
| Sensor sensitivity in lux at 1/60 s /1 s | 0,1/0,005 | 0,02/0,001 |
| Image sensor resolution (color or B/W sensor) | 6MP (3072 x 2048) | 6MP (3072 x 2048) |
| Hardware Functions | | |
| Protection class | IP20, additionally IK10 with Vandalism Set | IP20, additionally IK10 with Vandalism Set |
| Temperature range 0 to 40°C/32 to 104°F | • | • |
| Temporary internal DVR | 64 MB | 64 MB |
| Internal DVR, ex works | 4 GB (microSD) | 4 GB (microSD) |
| Microphone/speaker | Optional (with on-wall set) | Optional (with on-wall set) |
| Passive infrared sensor (PIR) | – | – |
| Integrated temperature sensor | • | • |
| Shock detector | • | • |
| Power consumption (typical) | 4 watts | 4 watts |
| Variable PoE class (factory default: 3) | 2 or 3 | 2 or 3 |
| Image Formats, Frame Rates, Image Storage | | |
| Maximum image format (per sensor) | 6MP (3072 x 2048) | 6MP (3072 x 2048) |
| Maximum frame rate (MxPEG, max. resolution) | 8 fps (6MP) | 8 fps (6MP) |
| CIF images with 4 GB MicroSD DVR | 250,000 | 250,000 |
| VGA images with 4 GB MicroSD DVR | 125,000 | 125,000 |
| HD images with 4 GB MicroSD DVR | 40,000 | 40,000 |
| QXGA images with 4 GB MicroSD DVR | 20,000 | 20,000 |

- available ex works
- not available



v25 – Technical Specifications

Security-Vision-Systems

MOBOTIX

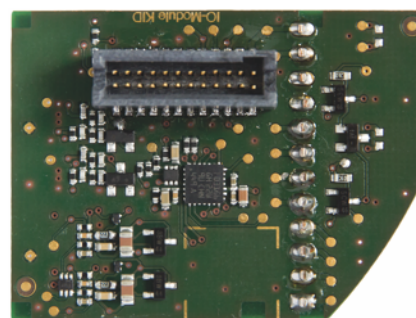
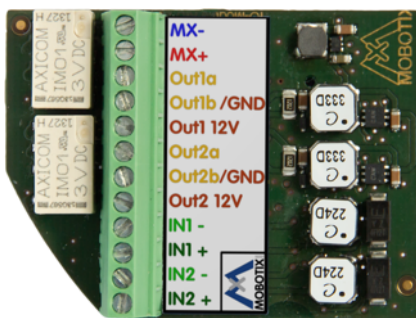
| Camera Variants | v25 Day | v25 Night |
|---|------------------|------------------|
| General Functions | | |
| Digital zoom (continuous) with panning | • | • |
| Codecs: Motion-JPEG/MxPEG/H.264 for SIP | •/•/• | •/•/• |
| Programmable exposure zones | • | • |
| Snapshot recording (pre/post-alarm images) | 50 | 50 |
| Terabyte ring buffer storage (internal/network) | • | • |
| Continuous recording with sound, 0.2 to 30 fps (with on-wall set with audio) | • | • |
| Event recording with sound (with on-wall set with audio) | • | • |
| Time and event control/flexible event logic | •/• | •/• |
| Weekly schedules/holidays | • | • |
| Web functionality (FTP, email) | • | • |
| Playback/QuadView and MultiView | •/• | •/• |
| Bidirectional sound in browser (with on-wall set with audio) | • | • |
| Logo generator, animated | • | • |
| Master/Slave arming | • | • |
| Privacy zones (time-controlled) | • | • |
| Customized voice messages (with on-wall set with audio) | • | • |
| VoIP telephony (audio/video, alert – with on-wall set with audio) | • | • |
| Remote alarm notification (network message) | • | • |
| Signal inputs/outputs and MxBus via | MX-Bus-IO-Module | MX-Bus-IO-Module |
| Programming interface (HTTP API) | • | • |
| Security Features (HTTPS/S/L, IP-based access control, IEEE 802.1X network authentication) | • | • |
| Video Analysis | | |
| Video Motion | • | • |
| MxAnalytics | • | • |
| MxActivitySensor | • | • |
| Video Management Software | | |
| MxManagementCenter | • | • |
| MOBOTIX App (iOS) | • | • |

- available ex works
- not available

MX-Bus-IO-Module (Option)

Connecting And Switching Of External Devices Via v25

The MX-Bus-IO-Module is a practical, optional extension board for the v25, which is simply attached to the back of the camera on the camera board. The module expands every camera to include two extra inputs and two 12V outputs and enables access to the two-wire MxBus. The outputs can be directly connected to a relay and thus higher voltages and loads, e.g., lamps or motors. MxBus is an encoded two-wire cable developed by MOBOTIX for transferring data and current. Using this solution, users can simply and securely power and control various MOBOTIX IO devices over distances of more than 100 m.



Left: Front of MX-Bus-IO-Module with green terminal connector for connecting external devices: The 12V-powered ports Out1 and Out2 serve, for instance, to connect relays (e.g., Eftako ER12-002-UC).

Right: Back with black camera socket (plug onto back/board of camera).

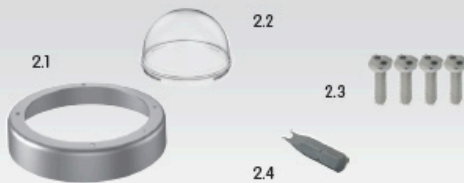
| MX-Bus-IO-Module: Technical Data | |
|----------------------------------|--|
| MOBOTIX order code | MX-OPT-IO3-INT |
| Ambient temperature range | 0°C to 40°C (32°F to 104°F) |
| Connectors for MxBus devices | 1 (1 x 2 terminals) |
| Inputs | 2 inputs (galvanically isolated; 0 V to 48 V DC) |
| Outputs | Option 1: 2 outputs (floating); max. capacity per contact: 30 W or 1 A or 48 V AC/DC Option 2: 2 outputs (12 V DC, max. 50 mA per output) |
| Configuration of inputs/outputs | Via camera software (available in web browser) |
| Max. power output at 12 V | 1.2 W |
| Terminal specification | AWG26 to AWG21 (wire thicknesses supported at the terminal connectors) |
| Power consumption | Typical 1 W |
| Specific information | <ul style="list-style-type: none"> • Note the MxBus power supply: Max. one additional module (e.g., GPS-Box), otherwise expand with BPA-Box (available soon) • Camera firmware required: 4.3.4.50 and higher |
| MTBF | > 80,000 h |

v25 Standard Delivery



| Item | Count | Part Name |
|------|-------|--|
| 1.1 | 1 | v25 with standard dome |
| 1.2 | 1 | Seal |
| 1.3 | 1 | Ethernet patch cable, 50 cm/19.7 in, black |
| 1.4 | 1 | Allen wrench 2.5 mm |
| 1.5 | 1 | MicroSD card pre-installed (SDHC montiert, SDXC supported) |
| 1.6 | 1 | Lens wrench, red |
| 1.7 | 4 | Allen screws M4x16 mm, black (for black housing) Allen screws M4x16 mm, white (for white housing) |
| 1.8 | 4 | Dowels 8 mm |
| 1.9 | 4 | Stainless steel washers Ø 5.3 mm |
| 1.10 | 4 | Stainless steel wood screws with Torx head 4.5x60 mm |

Delivered Parts, v25 Vandalism Set



| Item | Count | Part Name |
|------|-------|-------------------------------------|
| 2.1 | 1 | Vandalism ring |
| 2.2 | 1 | Vandalism dome, reinforced |
| 2.3 | 4 | Security screws |
| 2.4 | 1 | Screwdriver bit for security screws |

Connecting the v25



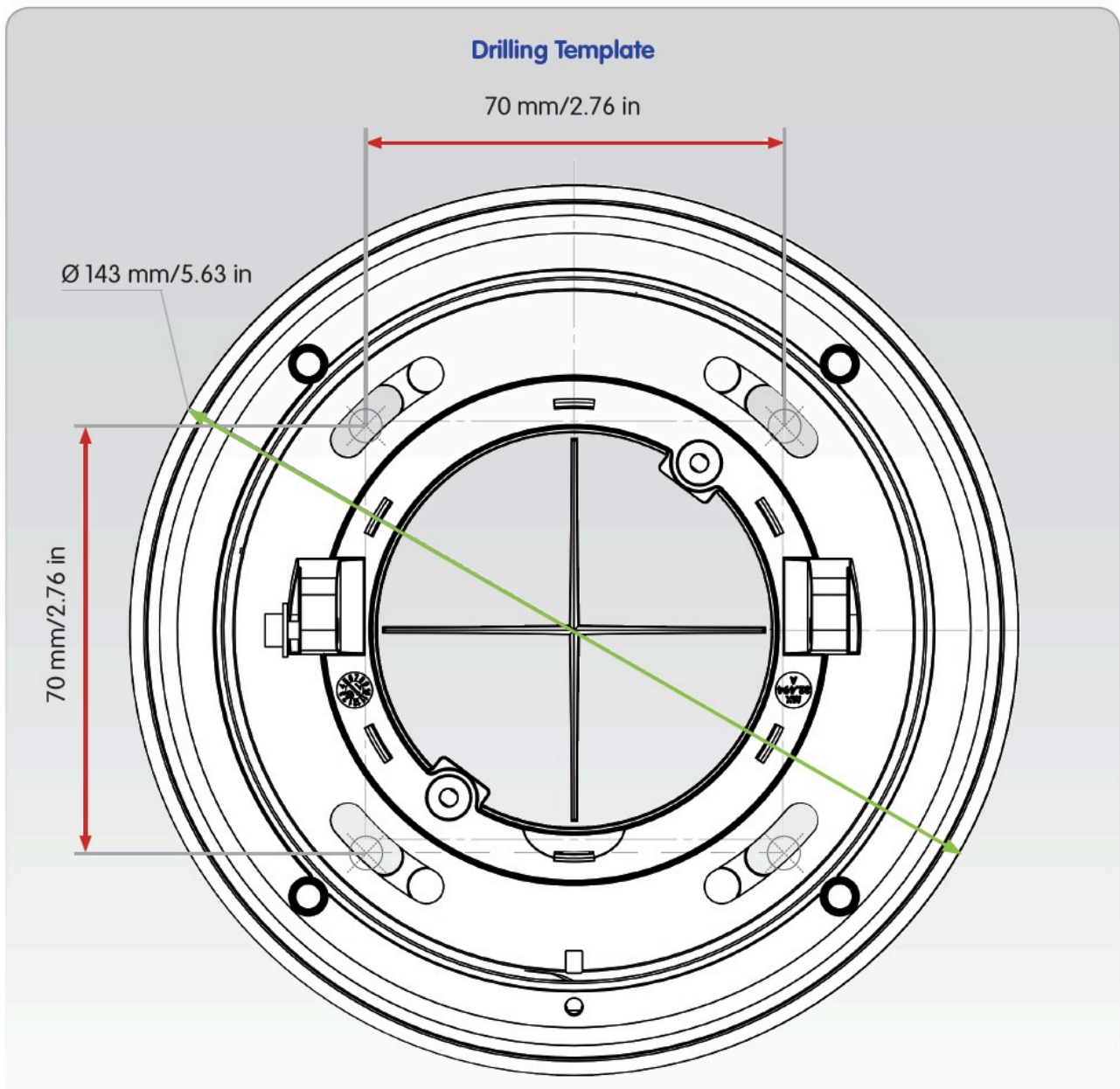
For information on **connecting** the v25, please see the D25 Camera Manual, *Section 2.9, «Network and Power Connection»*.

Regarding the **initial operation** of the v25, please see the D25 Camera Manual in *Chapter 3, «Initial Operation»*.

Use a suitable device for operating the camera keys (e.g., a screw driver).



(Excerpt from the technical documentation: www.mobotix.com > Support > Manuals)



(Excerpt from the technical documentation www.mobotix.com > Support > Manuals)