

Q22 with in-ceiling mount



Allround Easy. Allround Secure.

MOBOTIX ultra-compact, weatherproof IP-Dome camera is so inconspicuous that many do not recognize it to be a camera. Thanks to its 360° allround view, the camera can monitor and record, event-driven, an entire room.



MxEasy

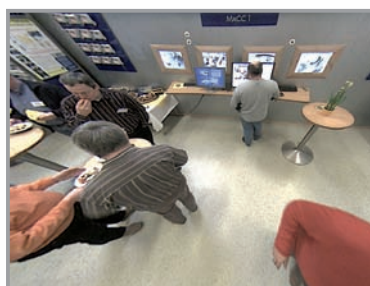
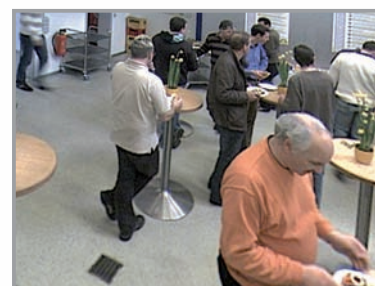


Image correction



Digital zoom/pan

Powerful performance in complete video solutions ...

- Hemispherical allround view for complete room coverage
- Digital, continuous zooming and panning
- Robust and maintenance-free, without mechanically moving parts
- Event-controlled, complete room recording directly in the camera
- Alarm function, speaker and microphone integrated
- Discreet and inconspicuous design

... starting at £388* incl. MxEasy software

HiRes Video Innovations

The German company MOBOTIX AG is known as the leading pioneer in network camera technology and its decentralized concept has made high-resolution video systems cost efficient.

MOBOTIX UK • Pegasus Business Park • Castle Donington, DE74 2TZ • Sales: 0844 4411 412 • uk-sales@mobotix.com

HiRes

3 Megapixel
2048 x 1536
software zoom

Skyline

Format free
each image format
freely definable

30 Frames/s
VGA (640 x 480)
12 F/s Mega

Virtual PTZ
digital pan, tilt,
zoom

Backlight
safe using CMOS
without mechanical iris

Internal DVR
internal via SD card,
external via Network

Win/Lin/Mac
Recording
via Network on PC
up to 1 Terabyte

microphone & speaker
Audio
bi-directional via IP,
variable framerates

SIP-Client with video
IP-Telephony
alarm notify,
cam remote control

Video motion
multiple windows
precision pixel-based

-22°F ... +140°F
Weatherproof
- 30° ... +60°C, IP65
no heating necessary

IEEE 802.3af
PoE
network power
even in winter

Robust
no moving parts
fiber glass housing

MxCC
Licence free
Video-Management-
Software

Technical Specifications Q22 Hemispheric Camera

Models	Basic, Sec	Virtual PTZ	Digital Pan/Tilt/Zoom, continuous 8x zoom
Lenses	L11 (hemispherical) L22 (90° x 67°)	Alarm/Events	Triggering of events by integrated multiple-window motion detection, external signal, temperature sensor, notification over email, FTP, IP-Telephony (VoIP, SIP), visual/acoustic alarm Pre- and post-alarm images
Sensitivity	Color: 1 lux (t=1/60 sec), 0,05 lux (t=1/1 sec)	Audio	Integrated microphone and speaker, Line-In/Line-Out, lip-synchronous audio, two-way speaker, audio recording
Sensors	1/2" CMOS, progressive scan	Interfaces	Ethernet 10/100, USB, Audio (microphone/speaker)
Max. image resolution	Color: 2048 x 1536 (3 Mega)	Audio/Telephony	VoIP, SIP, two-way speaker, remote controlling of the camera in- and outputs, event notification
Image format	2048 x 1536, 1280 x 960, 1024 x 768, 800 x 600, 768 x 576 (D1), 704 x 576 (TV-PAL), 640 x 480, 384 x 288, 352 x 288, 320 x 240, 160 x 120; free image format selection (e.g. 1000 x 200 for skyline)	Security	User-/Group management, HTTPS/SSL, IP address filter, IEEE 802.1x, Intrusion Detection
Max frame rate (M-JPEG) (Live/Recording)	VGA: 16 fps, TV-PAL: 12 fps, Mega: 6 fps, 3Mega: 4 fps	Certificates	BGV C9 ("UVV"), EMV (living environments, industry), EN 50155 (shock, vibration, temperature), CE, FCC
Video stream (MxPEG) (Live/Recording/Audio)	VGA: 30 fps, TV-PAL: 24 fps, Mega: 14 fps, 3Mega: 10 fps	Power supply	Year-round Power over Ethernet (IEE 802.3af; Class 0), Netpower-Adapter, typ. 4 W
Image compression	MxPEG, M-JPEG, JPG, H.263 (Video-VoIP-Telephony)	Operating conditions	IP65 (DIN EN 60529), -30° to +60 °C (-22°F to +140°F)
Internal DVR	Slot for SD card (up to 16 GB)	Dimensions	Ø x H: 16 x 5 cm, Weight: ca. 450 g
External storage	Directly on NAS and PC/Server without additional recording software	Standard delivery	Housing (high-resistance composites - PBT-PC), white, lens protection (transparent polycarbonate), incl. 360° lens, mounting parts, allen wrench, patch cabel S/FTP yellow 8-wire 50 cm (double-shielded), manual, software
Software (inclusive)	Video-Management-Software MxEasy, Control room software MxControlCenter		
Image processing	Backlight compensation, automatic white balance, image distortion correction, video sensor (motion detection)		

Technical information subject to change without notice!

Q22 Hemispheric

Available Accessories Q22 Hemispheric Camera

Standard Housing MX-Q22M-Sec



- Hemispherical allround view 360°
- For wall and ceiling mounting
- Robust and maintenance-free, without mechanically moving parts

Vandalism Housing MX-Q22M-Sec-Vandal



- Stainless steel vandalism housing incl. lens protection
- Matt, polished or white, silver, black powder-coated

In-Ceiling-Set MX-D22M-OPT-IC



- In-Ceiling set incl. mounting parts
- Easy mounting from front
- 150 mm installation standard

ExtIO Extension Module MX-ExtIO



- Microphone/speaker
- PIR sensor for motion detection, temperature sensor
- Integrated switch functions

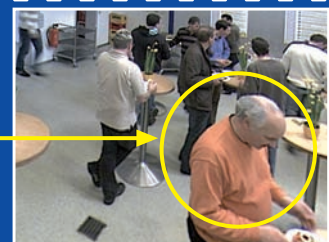
MxEasy



Image Distortion Correction



Digital Zoom/Tilt



HiRes Video Innovations

The German company MOBOTIX AG is known as the leading pioneer in network camera technology and its decentralized concept has made high-resolution video systems cost efficient.

MOBOTIX UK • Pegasus Business Park • Castle Donington, DE74 2TZ • Sales: 0844 4411 412 • uk-sales@mobotix.com