

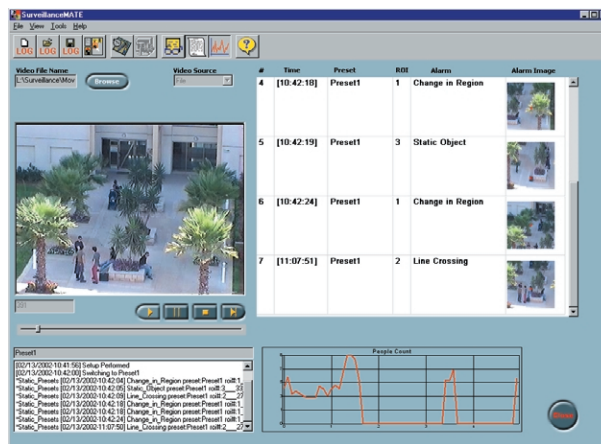
# AVMS 1000

## Automatic Video Monitoring Server

### A Powerful Real-Time and Integrated Facial and Area Surveillance Solution

Today's world requires security and surveillance solutions that empower the user, allowing ease of use and convenience at their fingertips. The increasing amount of Closed Circuit Television (CCTV) cameras being used today in commercial, residential, transportation and government environments demand both cost-effective and multifunctional products. Mate's AVMS 1000 offers a cost-effective entry level integrated solution for real-time **Face Verification, Facial Identification, Facial Surveillance and Area Surveillance.**

- RecognitionMATE™ and SurveillanceMATE™ for facial and area surveillance applications
- Supports single video input
- Internal database for face verification / access control applications
- Includes RMS for face identification and surveillance supporting 250 different persons (expandable to 5000)
- Rich area surveillance features set including SmartScene™ technology
- Simply connects to existing LAN/WAN for database backup and functional extensions



AVMS SurveillanceMATE™ functions can be set for people or objects within a specified region of interest.

### Face Recognition



Answering the need for biometric, non-intrusive and accurate means of real-time recognition, coupled with the power of video for monitoring and reconstructing events. RecognitionMATE™ maximizes functionality for **access control systems, facial identification and facial surveillance applications** by using MATE's proprietary technology for high-performance face detection and tracking in video streams, high precision face feature location, and high-speed face to database matching which is robust to illumination and pose variations.

### Area Surveillance

MATE offers a fully functional area surveillance application that automatically detects objects or people in a CCTV monitored area and recognizes threats and operational inefficiencies. SurveillanceMATE™ incorporates proprietary technology for accurate and robust detection and classification of static and other objects, counting people, identifying and tracking motions. MATE's SmartScene™ technology uniquely deals with the multitude of variations found in real-world area surveillance scenarios such as illumination changes over time, camera vibrations, multiple camera presets, and unknown camera positions. SmartScene™ allows for continuous and robust area surveillance with ease of use.



**Mate**  
CCTV

4 Hachorash St.  
Yehud 56470. Israel  
Tel: +972-3-5369061  
Fax: +972-3-5369062  
info@mate.co.il  
www.mate-cctv.com

# AVMS 1000

The most powerful single solution for all your security and surveillance needs.

## Hardware Specifications:

- DELL Intel® Pentium®4 workstation
- Network interface
- Single BNC video input: NTSC / PAL
- Voltage requirements: 100-240 volts / 60-50 Hz
- Operating temperature: 10°C-40°C (41°F-104°F)
- Workstation dimensions: 7.50"w x 16.77"h x 17.67"d

## Functional Specifications:

### Face Detection and Recognition

- Detects faces in field of view
- Tracks detected faces
- Computes recognition face characteristic data (FCD)
- Matches detected faces against "Watch-List" database

## Face Recognition Modes:

- Verification (one-to-one)
- Identification (one-to-many)
- Facial Surveillance (many-to-many)

## Performance Specifications (Per Camera):

### Face Detection and Recognition

- Face processing: 20 faces / sec, 5 fps\*
- Face detection size (across face): 10% - 90% of frame size
- Face matches: 2 million / sec\*\*

### Area Surveillance

- Processing speed: 10 fps
- Minimum detectable object: 0.05% of frame area

## Functional Specifications:

### Area Surveillance

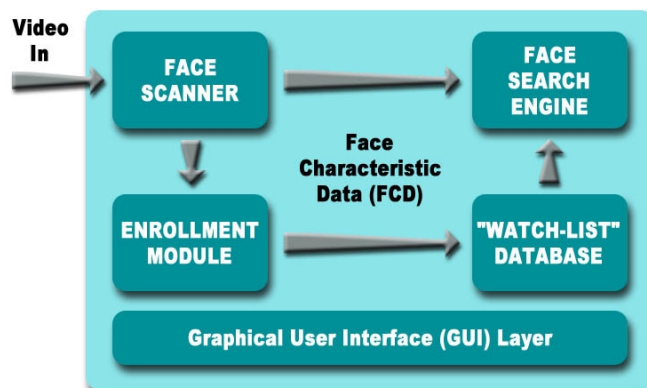
- Object in region of interest
- Directional line crossing
- Directional path
- Static object
- Report generation
- Speed limit crossing
- People counting
- Pre and post-alarm recording
- Proprietary SmartScene™ technology
- Graphs

## Optional Performance Enhancements:

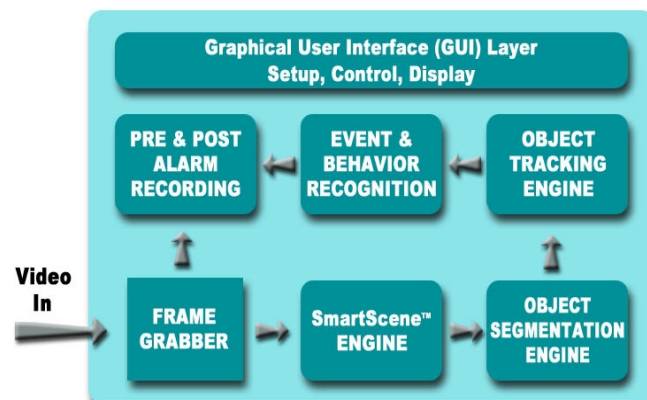
- RMS 1000: increases database size to 5000 FCD
- RMS 1004: increases database size to 5000 FCD and supporting 4 cameras (with additional AVMS 1000 units)

\* Complete processing including detection, tracking and computation of Face Characteristic Data (FCD).

\*\* When face matching is conducted on separate PC with RMS 1000 or RMS 1004 configuration.



AVMS 1000 - Standalone RecognitionMATE™ Configuration



AVMS 1000 - Standalone SurveillanceMATE™ Configuration