



## M420 Series Megapixel Network Video Recorder

A high performance IP Network Video Recorder for Megapixel Cameras. Capable of recording and displaying up to 16 Megapixel streams simultaneously, supporting a wide range of IP cameras including LILIN. Brilliantly easy time line search with drag and drop exporting of clips for copying to the DVD burner or network location makes this one of the easiest NVR products to operate.

Users can define multiple regions of interest creating separate channels of recording for sections of a megapixel image, rather than recording the entire frame. Available with 8 or 16 channels, with up to 6TB of internal storage.

### Key Features:

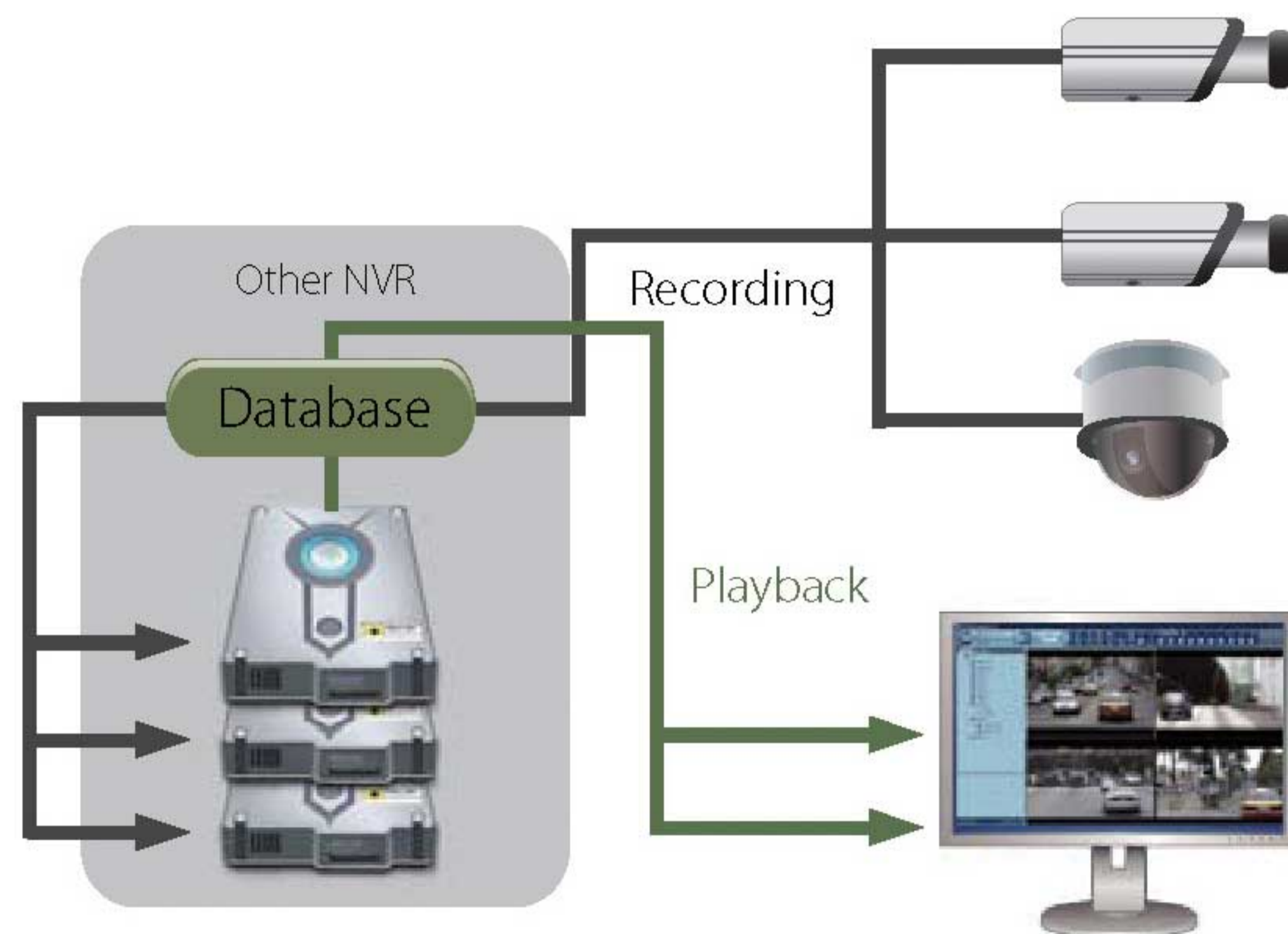
- Pre-built 8 or 16 channel licenses for all IP cameras from D1 up to 8 Megapixels
- Supports large data throughput for multiple megapixel cameras and triplex video functions
- Provides the unique Time Sector Engine for best video read-write performance on hard disk drives
- Easy video export function with DVD, USB or network disk drives
- Supports NVR client software for simple remote viewing

# Features That Make a Difference

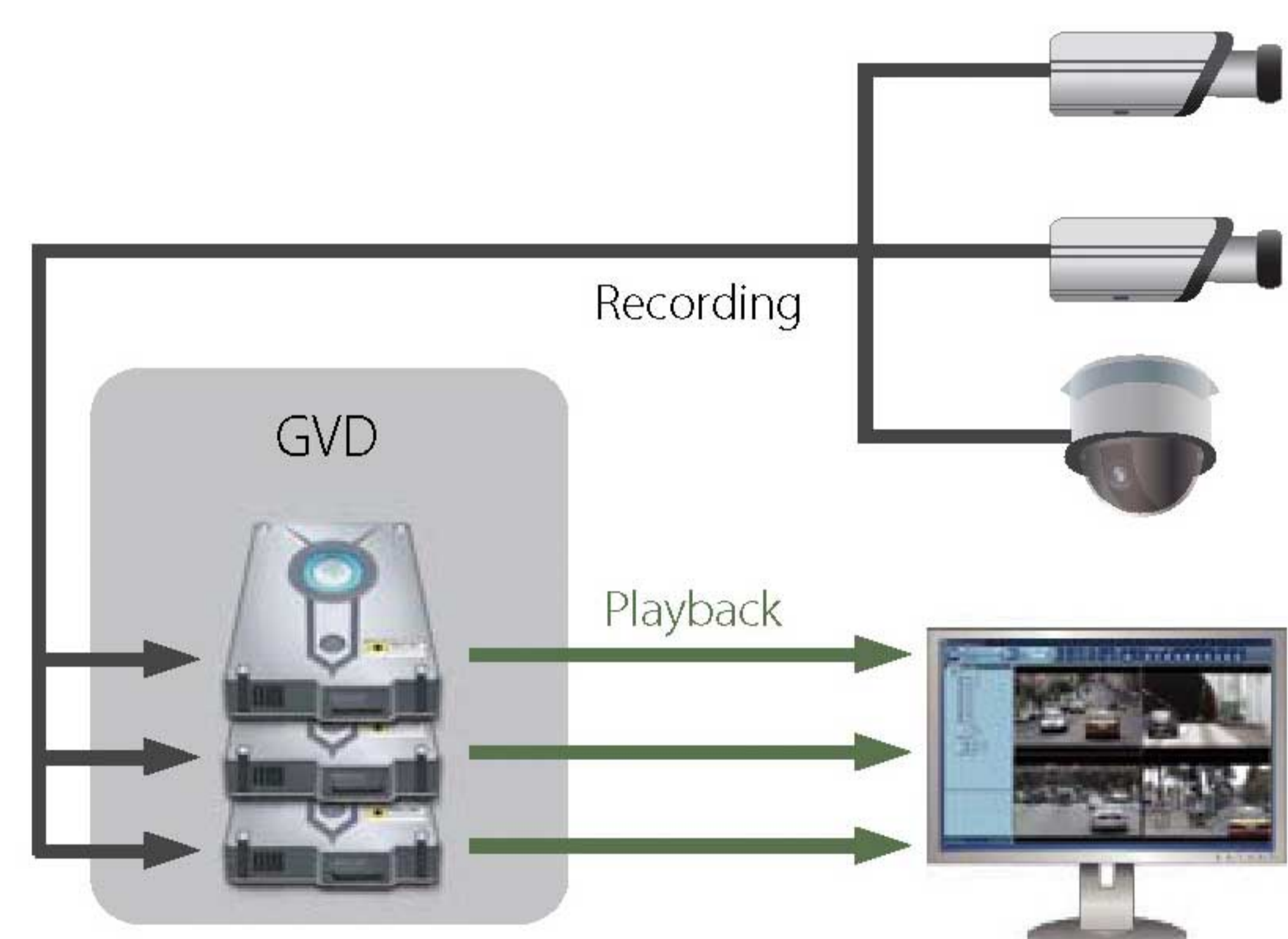
## Simultaneous Live Video View, Recording and Playback

### Time Sector Engine (TSE)

Time Sector Engine uses GVD's proven state of art technology and brings best video performance in the industry. Without using the inefficient free database design, the Time Sector Engine retrieves video data directly from pre-allocated HDDs and guarantees the performance for simultaneous live video viewing, video recording and playback. With only a few clicks of mouse, users can view every instance promptly when someone crossed a perimeter or moved an object.



Database - Retrieves video from HDD through Index

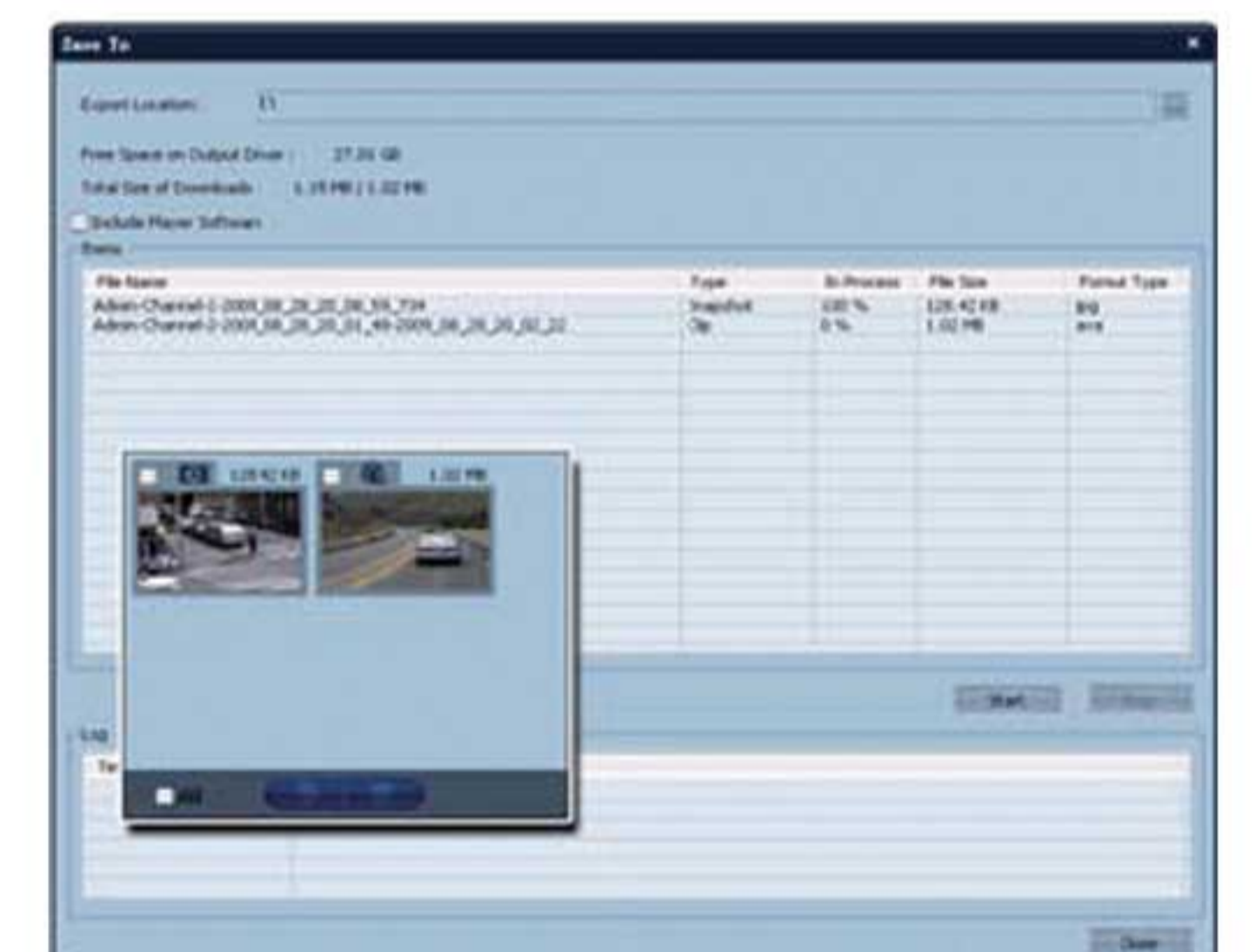


TSE - Retrieves video directly from pre-allocated HDD

## Exports Video with Clicks of Mouse

### Spooler

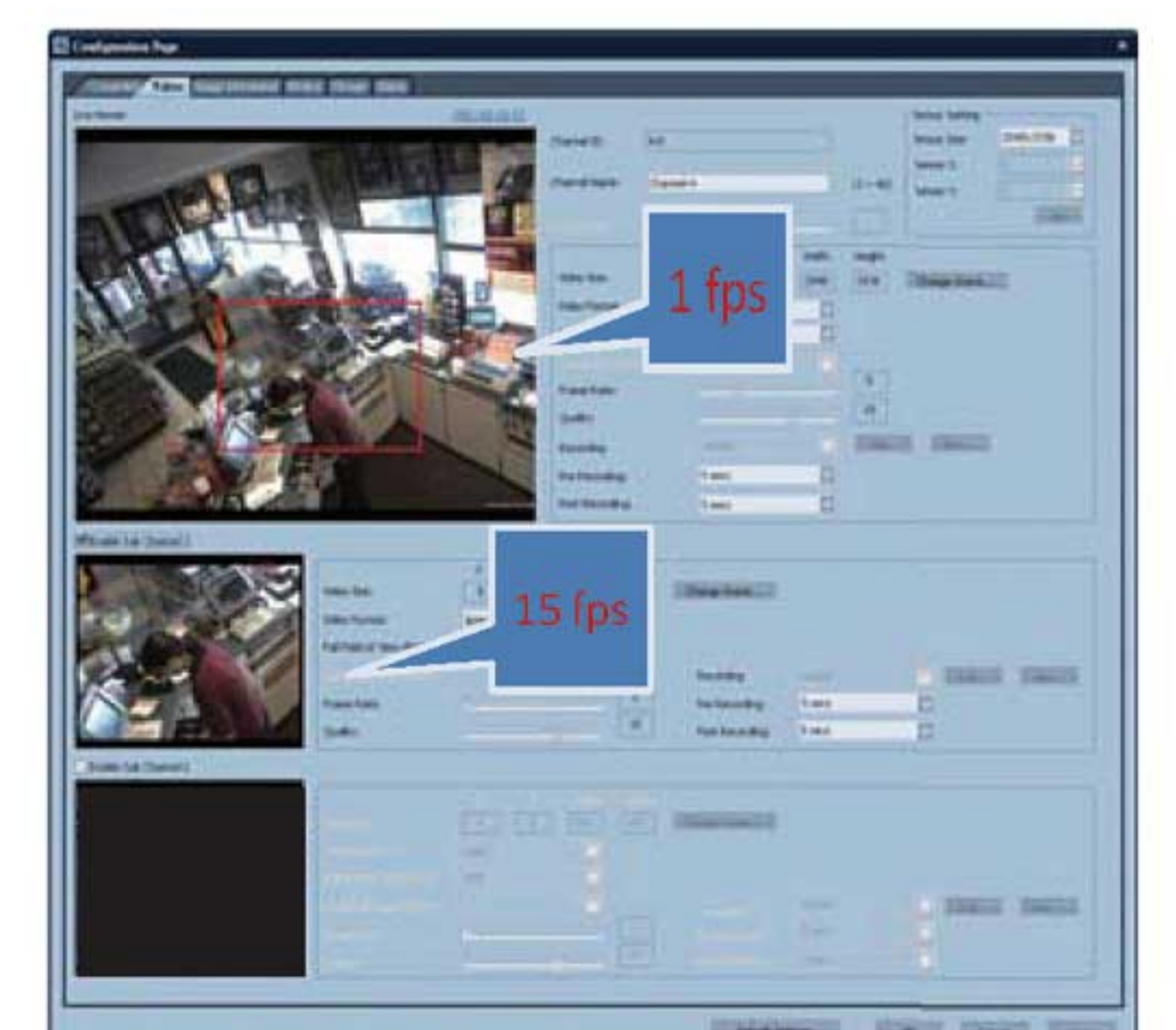
Spooler is an area designed for temporary video bookmarking. With single click of mouse, users can easily save and export video/images. The users could preview the video or snapshots in the spooler to verify the content and quality of video/images before exporting.



## Saves Bandwidth and Storage by Sub-channel and Dual Codec

### Sub-Channel

By taking the full advantage of the camera multiple-streaming feature, GVD NVR supports up to two additional sub-channel streams independent from the main stream. With this powerful feature, users could flexibly plan their recording and streaming solution based on the available storage and bandwidth at each location.



## Features That Make a Difference

### Supports HTML Map for Premise Overviews and Quick Navigation

- HTML map

GVD NVR supports HTML maps for easy navigation to cameras in multiple locations. Users can directly download maps from internet or from any drawing tools.

With the powerful HTML feature, users can put camera icons on the maps, add hyperlinks and bring up live video directly from the map with a click of mouse.




## Storage Capability

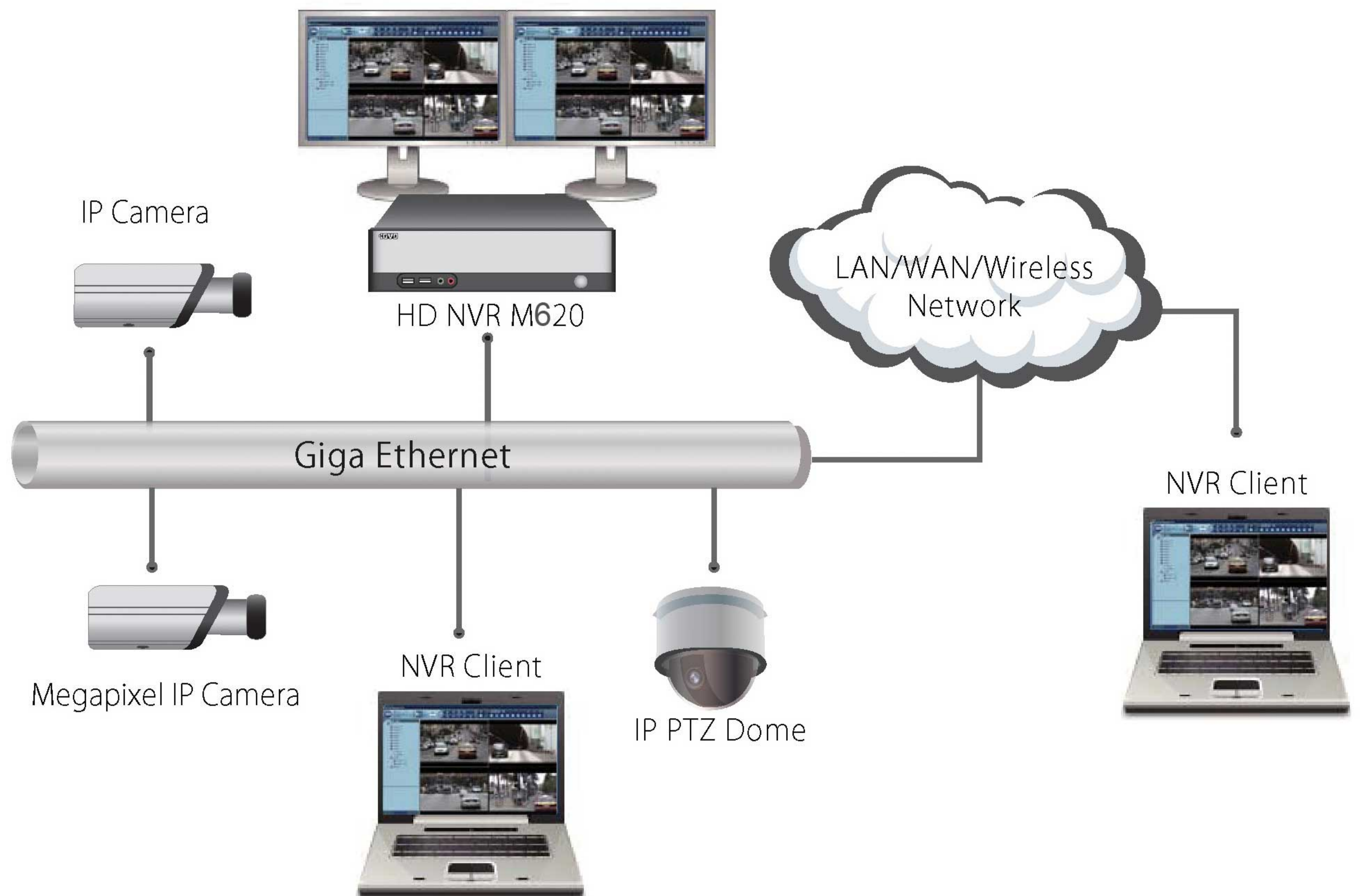
Model	Channel	Compression	Resolution	Frames Per Second			
				7	10	15	30
M620	16	H.264	D1	26(days)	16.5	11.6	8.25
	16	H.264	1.3M	19.9	14.7	9.3	4.6
	16	H.264	3.0M	9.3	6.6	4.6	
	25	H.264	D1	16.5	11.6	8.2	5.6
	25	H.264	1.3M	14.7	9.3	6.6	

\*Noted: based on 3 HDD trays of 1TB each

## Hardware Specification

Model No <b>M420</b>	
Processor	Intel Core 2 Quad E7500
Memory	2G
Operation System	Windows XP
Hard Disk Drive	3
Display Port	1
USB Port	6
LAN Port	Gigabit x 1
Dimensions(DxWxH)	185 x 413 x 486mm
Power Consumption	200W

# System Diagram



## Camera Support List



## Contact Details

Merit LILIN UK Limited, Davy Avenue, Knowlhill, Milton Keynes, MK5 8NB  
 Tel: 0870 120 5550 Fax: 0870 120 5551  
 Email: [uk@meritlilin.com](mailto:uk@meritlilin.com) [www.LILIN.co.uk](http://www.LILIN.co.uk)