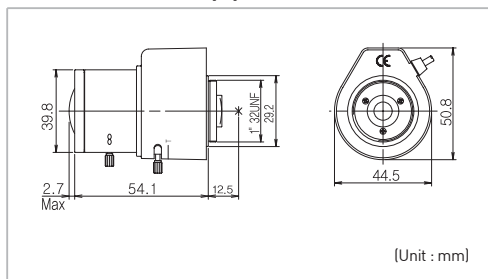


# KL-0308D IR

# VARIFOCAL LENS



## Outward Appearance



## Specifications

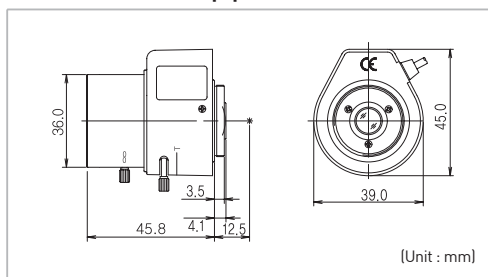
General Spec		KL-0308D IR			
Focal Length		3.0 ~ 8.0mm			
Mount		CS (1"-32 UNF)			
Max. Aperture Ratio		1 : 1.2 ~ 360			
Max. Image Format (H X V)		4.8 X 3.6			
Effective Lens Aperture	Front	Ø27.8mm			
	Rear	Ø8.5mm			
Back Focal Length		7.3 ~ 13.9mm			
Flange Back Length		12.5mm			
Angle of View	D		97.5° ~ 43.9°		78° ~ 33.2°
	H	1/3"	82.4° ~ 35.4°	1/4"	63.9° ~ 26.6°
	V		63.9° ~ 26.6°		48.7° ~ 20°
Object Size at 50cm (H X V)	3.0mm	1/3"	87.5 X 62.4cm	1/4"	62.4 X 45.3cm
	8.0mm		31.9 X 23.6cm		23.6 X 17.6cm
Iris Coil	Drive	190Ω			
	Control	850Ω			
Operation	Iris	Auto (F1.2 ~ 360)			
	Focus	Manual			
	Zoom	Manual			
Operating Voltage	Open	4.0V			
	Close	0.5V			
Operating Temperature		-10°C ~ +50°C			
Dimensions (L X W X H)		56.8 X 44.5 X 50.8			
Weight		85g			

# KL-358D IR

# VARIFOCAL LENS



## Outward Appearance



## Specifications

General Spec		KL-358D IR			
Focal Length		3.5 ~ 8mm			
Mount		CS (1"-32 UNF)			
Max. Aperture Ratio		1 : 1.4 ~ 360			
Max. Image Format (H X V)		4.8 X 3.6			
Effective Lens Aperture	Front	Ø17.5mm			
	Rear	Ø8.8mm			
Back Focal Length		8.4 ~ 14.2mm			
Flange Back Length		12.5mm			
Angle of View	D		101.7° ~ 44.3°		76.2° ~ 33.2°
	H	1/3"	80.7° ~ 35.4°	1/4"	60.5° ~ 26.6°
	V		60° ~ 26.6°		45° ~ 19.8°
Object Size at 50cm (H X V)	3.5mm	1/3"	85.0 X 57.7cm	1/4"	58.3 X 41.4cm
	8.0mm		31.9 X 23.5cm		23.5 X 17.5cm
Iris Coil	Drive	190Ω			
	Control	700Ω I			
Operation	Iris	Auto (F1.4 ~ 360)			
	Focus	Manual			
	Zoom	Manual			
Operating Voltage	Open	4.0V			
	Close	0.5V			
Operating Temperature		-10°C ~ +50°C			
Dimensions (L X W X H)		45.8 X 39 X 45			
Weight		65g			