

JVC®

The Perfect Experience / —

4-CH NETWORK ENCODER

VN-E4

Multi-streaming 4-Channel Encoder with Two-way Audio Input/output, Multicast, Built-in Viewer and More

The True Full Motion Encoder

30 fps at VGA (640 x 480) on all channels simultaneously



<http://www.jvc-victor.co.jp/english/pro/vnetworks/index-e.html>

- 30 fps at VGA (640 x 480) per channel offering 120 fps in total
- Multi-streaming encoding for simultaneous VGA and QVGA video on all four channels
- Direct connection with up to 4 analog cameras
- High-quality JPEG compression
- Pre/Post alarm recording and Motion detection function
- Support for JVC and Pelco-D* protocol
- Two-way audio input/output
- FTP client function
- NAT/IP masquerade
- Multicast capability
- Built-in Web server
- Built-in Web based viewer requires no proprietary software
- DC 5 V power supply

*PTZ dome camera only

Features

30 fps at VGA (640 x 480) per Channel

Capable of encoding at a maximum frame rate of 30 fps per channel at VGA, the VN-E4 offers 120 fps in total. Normally, when the number of channels increases the frame rate tends to drop, however the VN-E4 will ensure "VGA 30fps" for each channel. This produces a smooth and natural pictures without degradation.

Multi-streaming Encoding

The VN-E4 is capable of streaming VGA and QVGA simultaneously. This feature comes in very handy when some clients have limited bandwidth while other clients have enough bandwidth.

Pre/Post Alarm Recording and Motion Detection Function

Add extra layers of security with these functions. Built-in alarm in/out terminals allow you to connect an infrared sensor or door alarm to automatically trigger an alarm recording. A 2MB memory is available for pre/post alarm image storage, and via FTP it is able to send the alarm image to specified server. Motion detection function automatically indicates if any movement occurs in a specified area of the screen. You can specify the detection area and select the sensitivity level.

Support for JVC and Pelco-D Protocol

The VN-E4 is equipped with two ports, RS-485 or RS-232C, to control external cameras. Using the external device controller in combination with built-in viewer, this convenient capability makes it possible to control operations and settings on cameras supporting JVC and Pelco-D* protocol, all through a single window on your PC screen.

*PTZ dome camera only

Two-way Audio Input/Output

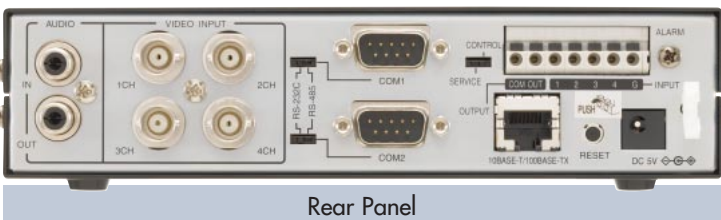
Increase your surveillance twofold with two-way audio capability. The VN-E4 offers audio input and output terminals so it not only can monitor audio but also emit a sound to startle and discourage intruders.

Multicast Capability

With the VN-E4, camera monitoring is never restricted to a dedicated system or monitor. Multicast capability allows this versatile video server to deliver the same high-quality images to any and all computers on your network. There's virtually no frame rate degradation when the VN-E4 is accessed by multiple clients. Network traffic management becomes easy and efficient.

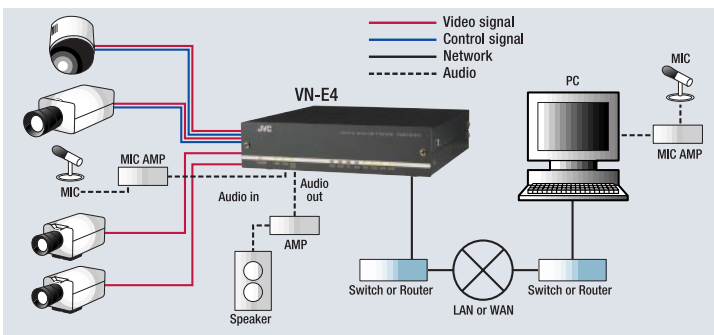
Other Features

- Built-in Web server
- FTP client function
- RJ-45 (cat 5) and 10Base-T/100Base-TX/full/half interface
- NAT/IP masquerade
- DC 5 V power supply



Rear Panel

System Example



All brand or product names may be trademarks and/or registered trademarks of their respective owners. Copyright © 2005, Victor Company of Japan, Limited. All Rights Reserved.



DISTRIBUTED BY



■ The Hachioji Plant of Victor Company of Japan, Ltd., has received ISO14001 and ISO9001 Certifications under the global standard for environmental management.

Viewing

Built-in viewer is available for viewing and controlling cameras, monitoring audio, and various settings.

• Built-in Viewer



• External Device Controllers



PTZ dome cameras

TK-C1480 series

PTZ Dome Camera Controller

Controls the TK-C655E(B), TK-C676E(B), and TK-C625 series dome cameras

TK-C1480 Series Controller

Controls the TK-C1460 series, TK-C1480 series and TK-C1430E/TK-C1431EG

Separate controller available for cameras supporting Pelco-D.

Enhanced Interface

Initial set up is easily achieved by Internet Explorer. Various operating parameters can be similarly adjusted, and firmware updates are easy to perform.

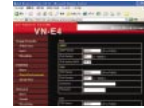
• Encoding Setting:

Setup image quality, frame rate, interpolation (fine mode on/off) for each channel



• Alarm Environment Setting:

Setup connected server address, port number, etc.



• External Serial Port Setting:

Setup serial port for external device controller (e.g. cameras supporting JVC and Pelco-D protocol)



Accessories

EIA Rack Mount Adapter

- VN-BK10 (for one unit)
- VN-BK11 (for two units)

Specifications

Video input	VN-E4U NTSC composite video signal: 1.0 V (p-p), 75 Ω (BNC) x 4
	VN-E4E PAL composite video signal: 1.0 V (p-p), 75 Ω (BNC) x 4
Audio input	Analog audio RCA x 1 2 Vrms input impedance 10 kΩ or more
Audio output	Analog audio RCA x 1 2 Vrms output impedance 600 Ω (max.)
Interface	RJ-45 (cat 5) x 1 10Base-T / 100Base-TX / Full / Half (auto negotiation supported)
Alarm I/O	Input x 4, Output x 1
Protocol	UDP / IP, TCP / IP, HTTP, FTP, DHCP, IGMP, ARP
Picture	Resolution (pixels) 320 x 240, 640 x 480
	Compression JPEG
Frame rate (fps)*	VGA (640 x 480): 30 fps (max.), total 120 fps QVGA (320 x 240): 30 fps (max.), total 120 fps
Serial connectors	RS-485, RS-232C, D-Sub 9-pin (male) 2 ports
Internal memory	2 MB SDRAM for pre/post alarm recording (10 MB RAM)
Motion detection	Yes
Multicast	Yes
Multi stream	Yes (Up to total of 40 Mbps and 10 streams)
Web server	Yes
View through	Web browser (I.E. 6.0 SP2)
Power supply	DC 5 V (AC adapter included)
Power consumption	3.0 A (max.)
Operating temperature	0°C to 40°C (32°F to 104°F)
Dimensions (H x W x D)	44 mm x 185 mm x 189 mm (1-23/32 inches x 7-9/32 inches x 7-7/16 inches)
Weight	1.1 kg (2.4 lbs.)
SYSTEM REQUIREMENTS (recommended)	
OS	Windows XP Pro (SP2) / Home (SP2)
Web browser	Internet Explorer 6.0 (SP2)
CPU	Pentium IV 1.5 GHz for 1 channel Pentium IV 3.4 GHz for 4 channels
Memory	More than 1 GB
HDD space	More than 20 MB
Display/video card	1,600 x 1,200 pixels, True color (24-bit, 32-bit)
Sound card (for audio use)	Sound Blaster PCI

VN-E4U: accepts NTSC composite input only

VN-E4E: accepts PAL composite input only

*Frame rate varies depending on the operating environment.

Design and specifications subject to change without notice.