

Ikegami

GIVING NEW VALUE TO IMAGES

Security Camera Series



High Performance Black & White Camera

ICD-38/38E

High Performance Black & White Super Dome Camera

ICD-68/68E

Super Cube DSP Color Camera

ICD-505/505P

High Performance Affordable DSP Color Camera

ICD-508/508P

High Performance DSP Super Dome Color Camera

ICD-608/608P



TO IMAGES

Provides Unquestionable High Quality Image and Reliability

High Quality Image



Previous Model

Professionally tuned for natural and stable picture reproduction with the best frequency modulation clarifying to produce image sharpness surpassing other cameras in the similar category.

Reliability

TV Broadcast Camera Technology Incorporated

Reliable surveillance camera series which draw upon Ikegami's extensive experience in the high end broadcast camera field.



Durable Metal Case

Metal case for added durability, reliability and RFI protection.



Easy Setup

Easy Installation and Set up Dome Camera

Easy Installation and Set up



AC24V/DC12V Push Terminals

Power connection is provided by easy to use spring loaded push terminals



GIVING NEW VALUE

NEW VALUE Sharp and High Sensitivity Image for The Surveillance Field

Sharp Image



Previous Model

High Sensitivity Image



Previous Model

High Performance Black & White Camera

ICD-38[EIA] 38E[CCIR]



Lens:Optional

Multi Function

● Mirror Image Function

The mirror image function corrects flipped images acquired through the use of prism lenses or L-angled pinhole lenses.



- AES (Automatic Electronic Shutter)
- BLC (Back Light Compensation)
- Auto Iris Function
- AC Line-Lock



ICD-38 AC24V



ICD-38E AC24V



ICD-38E AC230V

High Performance Black & White Super Dome Camera

ICD-68[EIA]/68E[CCIR]



Multi Function

● Aesthetic Appearance

Dome cameras designed to be unobtrusive and not conflict with the aesthetic properties of stores and commercial/residential areas. The same dome cameras can be recessed into ceiling, showing only dome portion of the camera with the optional ceiling mount kit, or surface mounted as is on to ceiling.

● Built-In Varifocal Lens

Equipped with a Varifocal auto iris lens as standard for view angle adjustment.

ICD-68 EIA model Varifocal Lens (4-9mm) view angle: (H) 71 - 31.6 degrees
ICD-68E CCIR model Varifocal Lens (2.6-6mm) view angle: (H) 106 - 47 degrees

- BLC (Back Light Compensation)
- AC Line-Lock
- Service Monitor Output (RCA)



Option



In Ceiling Mount Adaptor
XHG-6829

E TO IMAGES

NEW VALUE

Provision of both Sharpest Image Expressiveness and Color Reproduction for The Surveillance Applications

Sharp Image



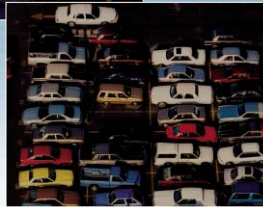
Previous Model



High Sensitivity Image



Previous Model



Low Smear Image



Previous Model



Super Cube DSP Color Camera

ICD-505[NTSC]
505P[PAL]



Lens:Optional

Multi Function

● Ultra Compact Design : W64 x H64 x D40.5mm (2.52 x 2.52 x 1.59)
ICD-505/505P comes with an ultra compact body for flexibility to fit a variety of locations and equipment to be installed such as intercommunication system, ATM machines and a variety of indoor and outdoor housings.



- AES (Automatic Electronic Shutter)
- BLC (Back Light Compensation)
- Auto Iris Function
- AC Line-Lock and Crystal Lock
- AGC (Auto Gain Control)



ICD-505 AC24V/DC12V



ICD-505P AC24V/DC12V

High Performance Affordable DSP Color Camera

ICD-508[NTSC]/**508P**[PAL]



Lens:Optional

Multi Function

- AES (Automatic Electronic Shutter)
- BLC (Back Light Compensation)
- Auto Iris Function
- AC Line-Lock and Crystal Lock
- AGC (Auto Gain Control)



ICD-508 AC24V/DC12V



ICD-508P AC24V/DC12V



ICD-508P AC230V

High Performance DSP Super Dome Color Camera
ICD-608[NTSC]/**608P**[PAL]



Multi Function

● **Aesthetic Appearance**

Dome cameras designed to be unobtrusive and not conflict with the aesthetic properties of stores and commercial/residential areas.

The same dome cameras can be recessed into ceiling, showing only dome portion of the camera with the optional ceiling mount kit, or surface mounted as is on to ceiling.

● **Built- In Varifocal Lens**

Equipped with a Varifocal lens as standard, which can help the view angle adjustment without trouble.

ICD-608	NTSC model	Varifocal Lens (4-9mm)
		view angle: (H) 71 - 31.6 degrees
ICD-608P	PAL model	Varifocal Lens (2.6-6mm)
		view angle: (H) 106 - 47 degrees

● **BLC (Back Light Compensation)**

● **AC Line-Lock and Crystal Lock**

● **AGC (Auto Gain Control) On/Off**

● **Service Monitor Output (RCA)**



Option



In Ceiling Mount Adaptor
XHG-6829

Function

AES (Automatic Electronic Shutter)

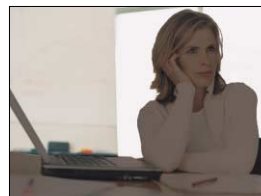
Incorporates a wide ranging (F1.4 to F64) AES function which produces optimum image reproduction even without the use of an Auto Iris Lens



EIA / NTSC : 1:1600
CCIR / PAL : 1:2000

BLC (Back Light Compensation) [Adjustable]

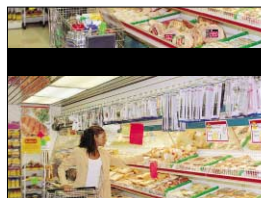
The object under the back light conditions such as at doorway and by the windows are clearly visible with this



Effect by BLC function

Line-Lock

Line-Lock, phase adjustable sync system is used so that stable picture can be obtained even when multiple cameras are switched for surveillance.



Without Line-Lock function



Effect by Line-Lock function

Auto Iris Function [Video Iris/ DC Iris Switchable]

ICD-38/38E/505/505P/508/508P can support Video and DC Auto iris lenses, available industry wide.

Digital Recorders

1CH Digital Recorder
SDR-301



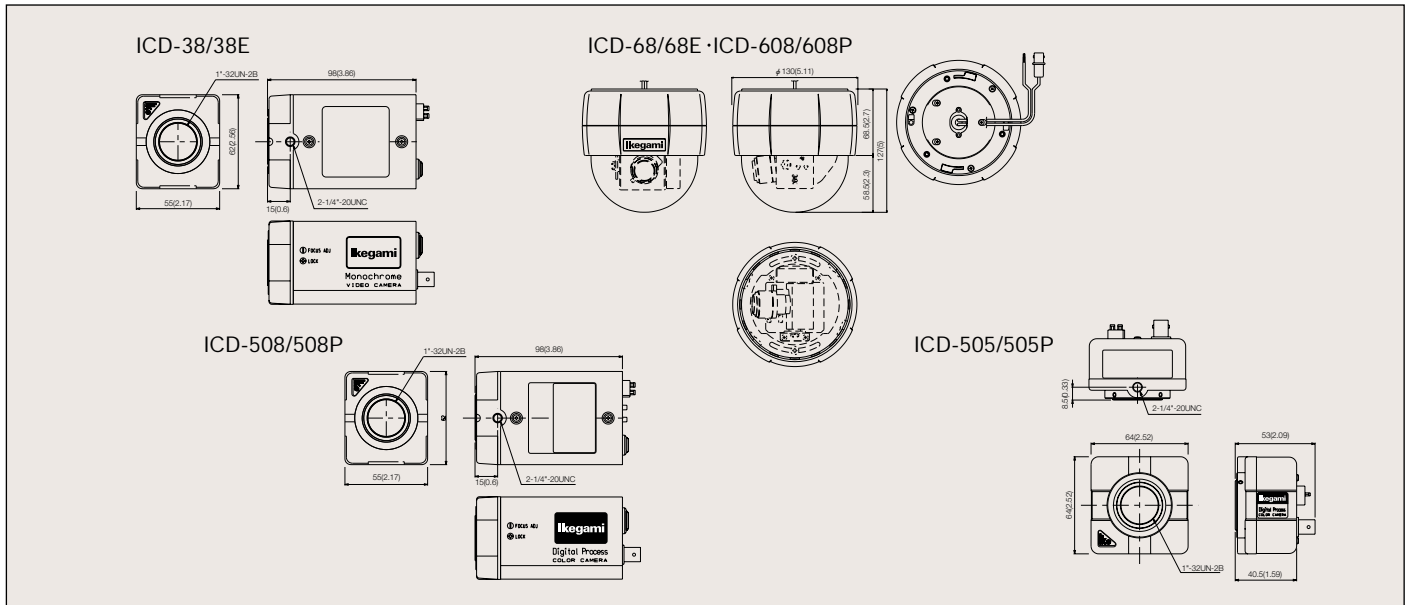
4CH Digital Recorder
SDR-304



Specifications

	ICD-38[EIA]/38E[CCIR]	ICD-68[EIA]/68E[CCIR]	ICD-505[NTSC] ICD-505P[CCIR]	ICD-508[NTSC] ICD-508P[PAL]	ICD-608[NTSC] ICD-608P[PAL]
Pickup Device	1/3 inch Interline Transfer CCD EIA : 512(H)X492(V), approx. 250,000 pixels CCIR : 512(H)X582(V), approx. 290,000 pixels		1/3 inch Interline Transfer CCD NTSC : 768(H)X494(V), approx. 380,000 pixels PAL : 752(H)X582(V), approx. 440,000 pixels		
Scanning System	2:1 Interlaced EIA or CCIR		2:1 Interlaced NTSC or PAL standard		
Sync. System	Line-Lock (Phase adjustment)		INT/Line-Lock(Phase adjustment)		
Frequency	EIA (H) 15.75kHz(V) 60Hz CCIR (H) 15.625kHz(V) 50Hz	VIDEO OUT :VS 1.0Vp-p/75ohms MON. OUT :VS 1.0Vp-p/75ohms	INT Line-Lock :NTSC (H)15.734kHz (V)59.94Hz :NTSC (H)15.750kHz (V)60Hz	PAL (H)15.625kHz (V)50Hz PAL (H)15.625kHz (V)50Hz	
Video Output	VS 1.0Vp-p/75ohms	VIDEO OUT :VS 1.0Vp-p/75ohms MON. OUT :VS 1.0Vp-p/75ohms	VBS 1.0Vp-p/75ohms		VIDEO OUT :VBS 1.0Vp-p/75ohms MON. OUT :VBS 1.0Vp-p/75ohms
Horizontal Resolution	380 TV Lines		480 TV Line		
S/N ratio	48dB				
Smear Level	-110dB				
Minimum Illumination	0.07 lux /F1.2(30IRE) 0.35 lux /F1.2(50IRE)	0.3 lux(30IRE)/ Wide Angle side 1.4 lux(50IRE)/ Wide Angle side	0.35 lux/F1.2 (30IRE) 0.7 lux/F1.2 (50IRE)		1.0 lux(30IRE)/Wide Angle side 2.0 lux(50IRE)/Wide Angle side
Auto White Balance	ATW (Automatic Tracking White Balance)				
Back Light Compensation (BLC)	ON/Off switchable(LEVEL Adjust)				
AES	ON/Off switchable, RANGE EIA :1:1600 RANGE CCIR:1:2000	—	ON/Off switchable, RANGE NTSC :1:1600 RANGE PAL :1:2000		—
AGC	Built-in(ON-fixed)		On/Off selectable		
Auto Iris Function	Video iris/DC iris (Selectable)	—	Video iris/DC Iris (Selectable)		—
Mirror Image Function	NOR/INV(Switchable)				
Built-in Lens	—	Focal Distance:4.0~9.0mm EIA View angle:(H)71°~31.6° Focal Distance:2.6~6.0mm CCIR View angle:(H)106°~47° [Manual Variofocal] Iris Control:Auto Iris (Max. scene illumination 10000lux)	—	—	Focal Distance:4.0~9.0mm NTSC View angle:(H)71°~31.6° Focal Distance:2.6~6.0mm PAL View angle:(H)106°~47° [Manual Variofocal] Iris Control:Auto Iris (Max. scene illumination 10000lux)
PAN/TILT Angle Adjustment	—	Horizontal:0°~360° at installation, ±30°detail adjustment Vertical:7°~166°	—	—	Horizontal:0°~360° at installation, ±30°detail adjustment Vertical:7°~166°
Lens Mount	CS mount				
Flange Back Adjustment	Built-in				
Power Requirement/ Power Consumption	EIA :AC24V±10% 60Hz/ Approx. 4W CCIR :AC24V±10% 50Hz/ Approx. 4W CCIR :AC230V±15% 50Hz/Approx. 4.5W	EIA :AC24V±10% 60Hz /Approx. 1.7W CCIR :AC24V±10% 50Hz /Approx. 1.7W	NTSC :AC24V±10% 60Hz /Less than 4W NTSC/PAL DC10.5V~15.0V /Less than 4W PAL :AC24V±10% 50Hz/Less than 4W	NTSC :AC24V±10% 60Hz /Approx.4W PAL :AC24V±10% 50Hz /Approx.4W NTSC/PAL DC10.5V~15.0V /Approx. 4W PAL :AC230V±10% 50Hz /Approx.4.5W	NTSC :AC24V±10% 60Hz/Approx.3.2W NTSC/PAL DC10.5V~15.0V /Approx.2.9W PAL :AC24V±10% 50Hz/Approx.3.2W
Ambient Temperature	-10°C+50°C (13.5°F-122°F)				
Camera Mount	1/4"-20UNC(each one for Upper/Bottom)	Fixing plate for latching dome camera	1/4"-20UNC (each one for Upper/Bottom)		Fixing plate for latching dome camera
Dimensions	W62XH55XD98mm (W2.44XH2.17XD3.86inch)	φ130XH127mm (φ5.12XH4.92inch)	W64XH64XD40.5mm (W2.52XH2.52XD1.59inch)	W62XH55XD98mm (W2.44XH2.17XD3.86inch)	φ130XH127mm (φ5.12XH5inch)
Weight	AC24V :540g (1.19lbs.) AC230V :760g (1.68lbs.)	Less than 900g(1.9 lbs)	Less than 300g(0.66lbs)	AC24V :Less than 400g(0.88lbs.) AC230V:Less than 800g(1.76lbs.)	Less than 900g(1.9 lbs)
Input/Output Connector	Video Output:BNC Lens:4P (Plug type E4-191J-150 or equivalent) AC24V Input:2P Push terminal	Video Output: Coaxial cable Pig —tail Type AC24V Input: 2 core wire Pig —tail Type MON. OUT:RCA Pin Jack	Video Output : BNC Lens:4P (Plug E4-191J-150 or equivalent) 24V Input:2P push terminal	Video Output: Coaxial cable Pig —tail Type AC24V Input: 2 core wire Pig —tail Type MON. OUT: RCA Pin Jack	Video Output: Coaxial cable Pig —tail Type AC24V Input: 2 core wire Pig —tail Type MON. OUT: RCA Pin Jack
Accessories	Operation Manual				

Dimensions:mm(inch)



Design and specifications are subject to change without notice.

Ikegami IKEGAMI ELECTRONICS (U.S.A.), INC. ■URL <http://www.ikegami.com>

U80A042-HI-K5 Printed in Japan

HEADQUARTERS 37 BROOK AVENUE, MAYWOOD, NJ 07607
Phone:(201) 368-9171 Fax:(201) 569-1626

WESTCOAST OFFICE 2631 MANHATTAN BEACH BLVD., REDONDO BEACH, CA 90278 Phone:(310) 297-1900 Fax:(310) 536-9550

SOUTHWEST OFFICE 526 BLUEBIRD LANE, RED OAK, TX 75154 Phone:(972) 869-2363 Fax:(972) 556-1057

MIDWEST OFFICE 747 CHURCH ROAD, UNIT C1 ELMHURST, IL 60126 Phone:(630) 834-9774 Fax:(630) 834-8689

SOUTHEAST OFFICE 5200 N.W. 33RD AVENUE, SUITE 111 FORT LAUDERDALE, FL 33309 Phone:(954) 735-2203 Fax:(954) 735-2227



Certified
JOA-0755



Accredited by the Dutch
Council for Certification