



Setting New Standards
in Entrance Control

- Optical turnstile with integrated barrier arms
- Deters all unauthorised entry attempts
- Fast throughput
- Physical and visual deterrent
- Compatible with all access control systems
- Premium design with architectural flexibility
- Total bi-directional control with 5 modes of operation
- Compliant with most international disability regulations

Concept

Fastlane *plus* is the very latest in high tech entrance control systems. The system uses state of the art optical technology to monitor the passage of every individual entering and leaving a facility, and fast-acting barrier arms to physically deter unauthorised access. This unique combination of technologies provides all the ease of use and aesthetic qualities associated with Fastlane, the world's leading optical turnstile range, with the added protection and deterrent effect that physical barriers provide.

Clients and employees alike pass through Fastlane *plus* with speed and safety whilst unauthorised entry attempts are identified. The intelligence of Fastlane *plus* combined with the speed of activation of the barrier arms enables the system to have a minimal footprint thereby ensuring a discreet presence and minimal impact on the building design whilst maintaining the highest level of security.



The Fastlane R400 MA has been designed with security and architectural flexibility in mind. The R400 MA comes with 24 individual beam paths. The large number of beam paths gives even greater accuracy of detection and reduces the chances of false activations of the barrier arms. The Fastlane R400 MA features anti-crawl beams to detect anyone trying to gain entry by crawling under the barrier arms. This unit features interchangeable vanity tops, giving a virtually unlimited choice of materials, to easily blend the unit in to the fabric of the building. Integral card reader mounting options are available to give the most discreet overall finish possible. The use of Cat 5 interconnections between the pedestals simplifies and speeds up installation.

Function

Fastlane *plus* is designed to ensure only one person gains access for each authorised card presented. The system uses active infra-red beams to create an invisible electronic field between two pedestals. These beams are controlled by a microprocessor utilising neural network technology designed to monitor the movement of people with pinpoint accuracy, detecting tailgaters at just 1/4 inch apart.

Versatile

Fastlane *plus* R400 MA has five modes of operation:

1. Normally Closed (Barriers extended).
2. X Mode (Barriers partially extended).
3. Optical Mode (Barriers permanently retracted).
4. Lane Closed Mode (Barriers permanently extended).
5. Auto Mode (Barriers extended).

Operating modes are electronically selectable so it is possible to change the modes at different times of the day or week. The lanes can be connected to a manual remote control panel, or integrated with 3rd party systems for automatic mode selection.

Secure 2-Stage Alarm Response

Fastlane *plus* functions automatically and in the event that someone enters without an authorised card an alarm will sound and the barriers will activate to deter the unauthorised entrant. If that person then attempts to push past the barrier arms then a second louder alarm will sound and a secondary relay will be triggered, which can be used to control stricter security actions such as triggering CCTV, locking doors or controlling elevators.

As well as monitoring for unauthorised entry and exit, Fastlane *plus* can also detect tailgating, collusion, obstruction, non-entry and assist any anti pass-back features in the access control system.

User Friendly and Safe

The barrier arms of Fastlane *plus* have a typical closing time of 1/2 second. This, combined with its safety beams, allows the system to close on tailgaters as close as 6 inches apart. The safety beams are designed to stop the arms closing if they detect someone is in the way of them.

Fastlane *plus* is compliant with many international regulations regarding emergency egress. The barrier arms feature a unique 'break away' mechanism, which allows safe emergency egress in the event of power failure. The force of the barrier 'break away' can be varied to suit the application. Fastlane *plus* also features a fire alarm input to retract and disable the barrier arms, thereby allowing free, unrestricted exit.

Disabled Access

Fastlane *plus* is fully compliant with the UK Disabilities Act, as well as most similar international standards. Audio/Visual feedback is provided as standard and the lane provides for unhindered wheelchair access without the need for a separate passgate.

Power Requirements:

12v DC (11.9-14v) Supply current 2A nom per lane
35v DC (32-38v) peak current 3A
Mains PSU supplied (115v or 230v).

Optics:

Optical Turnstile - pulsed multi infra-red beam array, synchronised for detection.
Barrier Safety - pulsed multi infra-red beam array.
Environmentally hardened to avoid sunlight interference.

Display:

Tri Colour 'chasing' LED display

Sounders:

Single Tone Sounder: Card Authorisation
Multi Tone Variable Volume Sounder: Alarm Condition

Inputs:

Require voltage-free switching (current sense 1mA typical)
Entry Request (NORMALLY OPEN)
Exit Request (NORMALLY OPEN)
Visitor Access (NORMALLY OPEN)

Outputs:

Voltage free relay contacts rated 0.5A, 28vDC in two groups for the following functions:

Output to System:

Entry (NORMALLY CLOSED) Exit (NORMALLY CLOSED)
Alarm (NORMALLY CLOSED)
Barrier Arms Forced Alarm (Depending upon arm type) (NORMALLY CLOSED)

Flow Control and Alarm Outputs:

Ready for Entry (NORMALLY CLOSED, NORMALLY OPEN, COMMON poles)
Ready for Exit (NORMALLY CLOSED, NORMALLY OPEN, COMMON poles)
Remote Alarm (NORMALLY OPEN)

Display Programming Software:

Operating System: Windows 95, 98, NT compatible
Operating Modes

- Card In/Card Out • Card Entry/Free Exit
- Free Entry/Card Out • Free Entry/Free Exit
- No Entry/No Exit • Auto Entry/No Exit

Opening/closing time

1/2 second

Speed of Throughput

1 person per second (subject to response time of access control system)

Tailgate Detection Distance

1/2 centimetre (1/4 inch)

Barrier Arms:

Breakaway Arms: 38 mm (1.5 Inches) dia. tube, self returning

Variable break away force: Short Arm: 0.7-1.5 Newton (5-15 Kg) Long Arm: 0.5-1.0 Newton (5-10 Kg)

Lane width:

Standard: 600-700 mm (23-28 inches)

Disabled: 850-960 mm (33-38 inches)

Pictures show vanity top options
(Due to continued improvements specifications are subject to change without prior notice)

for further information please contact your local dealer or the manufacturer

Visitor Management

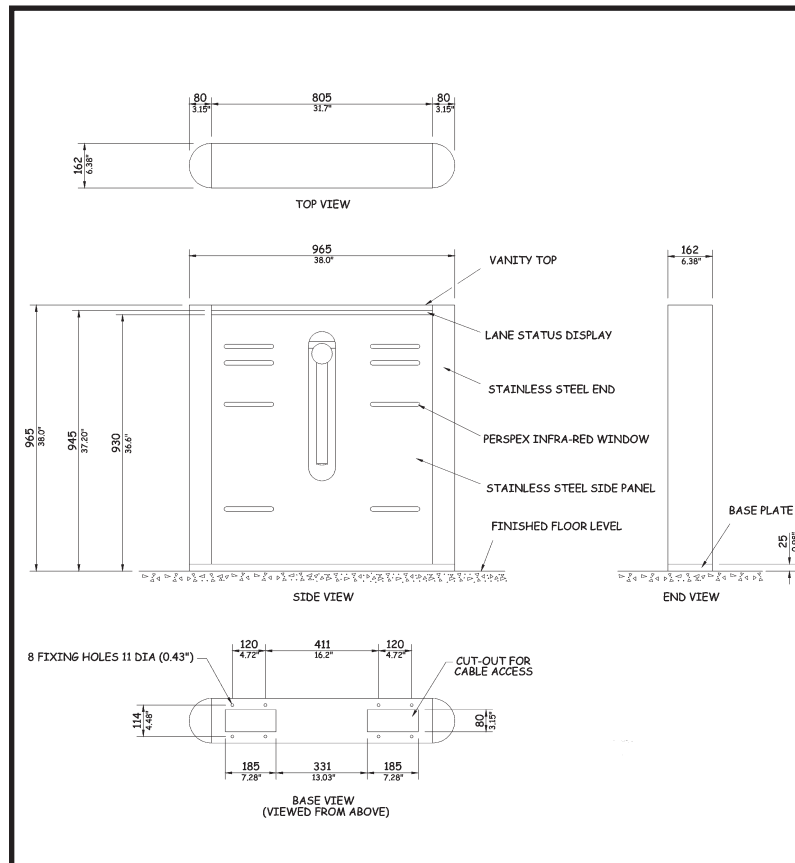
Fastlane *plus* features a Visitor Management input. When activated this allows an unlimited number of people to pass through the lane. Once the visitors have entered and the system the no longer sees anyone entering or exiting, for a period of time, it returns to its original state. The lane should be supervised during this time. This input can also be used in other situations such as post trolleys.

Reliability

Fastlane *plus* has been designed with easy installation and low maintenance in mind. Fastlane *plus* can be integrated into any existing access control or building management system and can be used in conjunction with most card and biometric readers. Fastlane *plus* builds on Fastlane's proven track record of over 1000 systems installed worldwide over 10 years.

Applications

The primary use for Fastlane *plus* is in access control environments that require similar levels of security as a traditional 1/2 height turnstile, but need the highest level of tailgate detection and discreet aesthetics that Fastlane *plus* offers. The design concept allows a flexible approach to providing effective access control in areas where previously security had been desirable but the associated aesthetic implications had been unwelcome or prohibitive. Typical applications include office entrances, reception areas, financial institutions, government buildings, advertising and media agencies, health clubs and other leisure facilities.



Accessories and Optional Extras

Fastlane Floor Protector

The Fastlane Floor Protector system is designed for temporary installations and enables Fastlanes to be installed quickly and cost effectively, without drilling or otherwise damaging the floor on which they stand.

Fastlane Infill System

The Fastlane Infill System is a series of decorative modular panels, which compliment the Fastlane and Fastlane *plus* turnstiles by guiding users in the desired direction.

Fastlane Remote Control

This desk mounted controller is designed to allow the guard to override some of the features of the Fastlanes, facilitate visitor entry and to give a visual indication of alarms at the guard desk.

Card Reader Mounting

A number of alternative card reader mounting options are available.

Alternative material and colour finishes.

IDL offers a full design service for custom enclosures, as well as alternative colours and materials.