



## Domed camera

# HTC-12 SERIES MINI DOME CAMERA

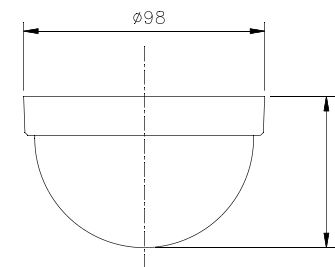
DSP colour camera  
**FEATURES**  
 Auto trace white balance  
 2H Mode Aperture Correction  
 Electronic shutter up to 1/100,000 sec  
 Night vision available for colour camera



	MONOCHROME	COLOUR
Pick-up Device	1/3" CCD image sensor	1/3" or 1/4" CCD image sensor
Picture Elements	Sony & Samsung chip: NTSC/EIA: 510*492 / 768*494 (hi-res.), PAL/CCIR: 500*582 / 752*582 (hi-res.)	
	Panasonic & Sharp chip: NTSC/EIA: 512*492 / 771*492 (hi-res.), PAL/CCIR: 512*582 / 753*582 (hi-res.)	
H. Sync Frequency	NTSC/EIA:15.734 KHz, PAL/CCIR:15.625 KHz	
V. Sync. Frequency	NTSC/EIA:59.94 Hz, PAL/CCIR:50 Hz	
Synchronization	Internal	
Horizontal Resolution (TV lines)	420 / 580(Hi-res.)	380 / 480(Hi-res.)
Back Light Compensation	AUTO	
Electronic Shutter	AUTO, Range:1/50(1/60) ~ 1/100,000 sec.	
Gain Control	AUTO	
Lens	3.6mm standard, 2.9mm, 3.7mm, 6mm, 8mm and 12mm option	
Gamma Correction	0.45	
S/N Ratio	More than 48 dB (AGC OFF)	
Video Output	1 Vp-p, 75 Ohms	
Dimension mm	φ 98 * W66	
Power Supply	12VDC only	
Power Consumption	115mA	125mA (1/4"), 220mA(1/3")
Weight gr	110	
Storage Temperature	-30°C ~ +60°C	
Operating Temperature	-10°C ~ +45°C	

SPECIFICATIONS ARE SUBJECT TO CHANGE WITHOUT NOTICE

Model	Image	B/W	Colour	Med-res.	Hi-res.	Chips	Sensitivity (F2.0)
HTC-12I	1/3"	○		○		Samsung	0.1
HTC-12N	1/4"		○	○		Sharp	1
HTC-12H	1/3"		○		○	Pro-vision	0.1



**Special Price for Over 10Pcs (Inclusive),  
 Please Contact:020 8965 0111 or E-mail:sales@huntelect.co.uk**

MODEL	DESCRIPTION
HTC-12I	1/3" med-res. B/W mini dome, 3.6mm lens, 420 TV lines, 0.1 Lux, DC12V, Samsung chips
HTC-12N	1/4" med-res. colour mini dome, 3.6mm lens, 380 TV lines, 1 Lux, DC12V, Sharp chips
HTC-12H	1/3" hi-res. colour mini dome, 3.6mm lens, 480 TV lines, 2 Lux, DC12V, Panasonic chips