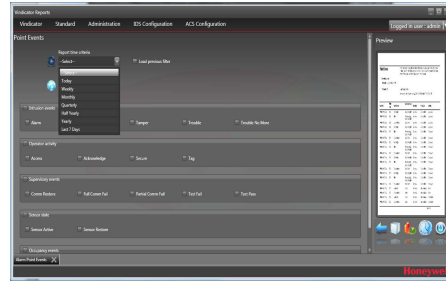


Vindicator® SAW 2

Security Archive Workstation



System Reporting and Archiving

The SAW 2 interfaces with the Vindicator V5 and V3 head-end panels and the Vindicator Badge Manager to provide the capability to log, retrieve, and generate reports on all events and actions occurring during system operation.

Event information logged includes access, intrusion and communication event descriptions, dates and times. Actions such as operator assessments, configuration changes and maintenance back-ups and restores can also be logged and reported on.

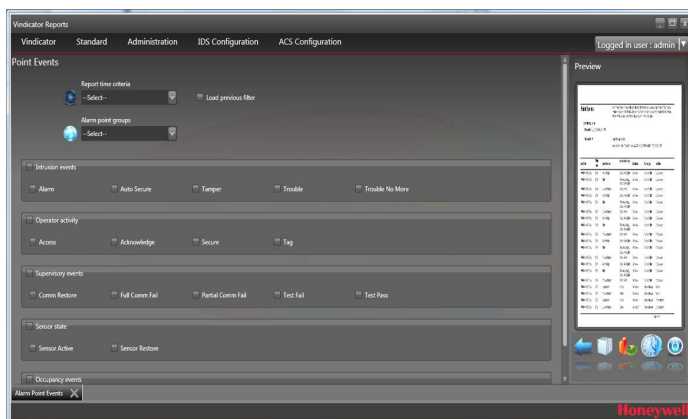
The event data is transferred over the security network from the V5 or V3 to the SAW workstation. Up to 750,000 events are stored on the hard disk. This data can be downloaded at periodic intervals, such as daily or weekly, to a diskette for permanent storage

SAW 2 enables the user to query the system. Pre-formatted reports may be generated automatically for alarm points, communication events, and entry control event categories. Additional customized reports can be created as desired.

FEATURES

Scalable - SAW 2 may be deployed as a stand alone system for use in a SCIF, or can be used with the Vindicator VSS server. From one to five SAW 2 clients may be deployed to a VSS server. SAW 2 utilizes the powerful Microsoft SQL Database for archiving.

Flexible - A wide variety of standard SAW 2 reports are available for easy use. Additionally, the operator may create a customized report to meet their site specific needs. SAW 2 may also be installed on a VCC 2 workstation.



Vindicator® SAW 2

Security Archive Workstation



System Reporting and Archiving

SPECIFICATIONS

Intel Core I7 Processor
16GB DDR3 1600MHz RAM
GeForce GT730 Graphics Card
2x 1TB Enterprise 7200 RPM Hard Drives
RAID Level 1
SeaLevel 232/422/485 Serial Card

Microsoft Windows 7 or 10
Microsoft SQL 2012 R2
Microsoft Office 2010 Professional
USB Wired Keyboard
USB Optical Mouse
24x SATA DVD

2U Rack Mount Chassis
Lockable Faceplate
400w Power Supply
2x Removable HD Trays
HDMI, DVI, VGA Cables
USB Speakers

ORDERING INFORMATION

SAW 2 Workstations and Options

USAF AE Edition

548-51200-01 AE VCC 2 / SAW 2 Client Workstation (Win 7)
548-51200-11 AE VCC 2 / SAW 2 Client Workstation (Win 10)
548-51300-01 AE VCC 2 / SAW 2 SCIF Workstation (Win 7)
548-51300-11 AE VCC 2 / SAW 2 SCIF Workstation (Win 10)
548-51400-01 AE SAW 2 Client Workstation (Win 7)
548-51400-11 AE SAW 2 Client Workstation (Win 10)
548-51500-01 AE SAW 2 SCIF Workstation (Win 7)
548-51500-11 AE SAW 2 SCIF Workstation (Win 10)

SE Edition

548-61200-01 SE VCC 2 / SAW 2 Client Workstation (Win 7)
548-61200-11 SE VCC 2 / SAW 2 Client Workstation (Win 10)
548-61300-01 SE VCC 2 / SAW 2 SCIF Workstation (Win 7)
548-61300-11 SE VCC 2 / SAW 2 SCIF Workstation (Win 10)
548-61400-01 SE SAW 2 Client Workstation (Win 7)
548-61400-11 SE SAW 2 Client Workstation (Win 10)
548-61500-01 SE SAW 2 SCIF Workstation (Win 7)
548-61500-11 SE SAW 2 SCIF Workstation (Win 10)

For more information: www.honeywellvindicator.com

Honeywell Security Group

Honeywell Vindicator Technologies
3019 Alvin Devane Blvd, Bldg 4, Suite 430
Austin, TX 78735
1.512.301.8400 (sales)
1.800.367.1662 (support)
www.honeywell.com

LVCCD/D
May 2012
© 2012 Honeywell International Inc.

Honeywell