

Varifocal Lenses

Ultrak professional varifocal lenses are designed and manufactured to provide security professionals with the best combination of high performance, ease of installation and competitive cost.

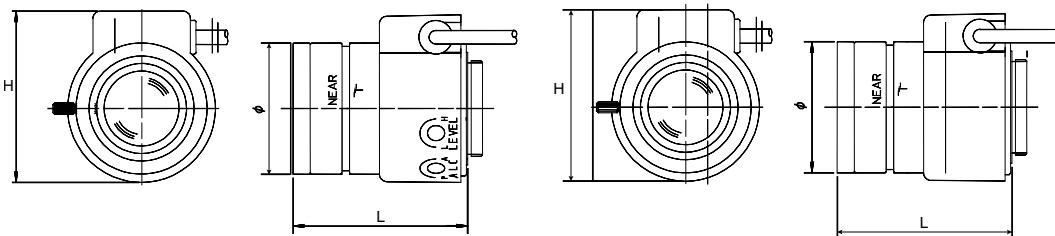
Ultrak provides a complete range of varifocal lenses. With a choice from 12 different models we are sure to meet the needs of your surveillance application. With their manual zoom and focus adjustment these varifocal lenses enable you to select the precise field of view, to suit your specific requirement, thus ensuring installation is simplified. The Ultrak range includes manual-iris, video drive and direct drive auto-iris lenses.



Features:

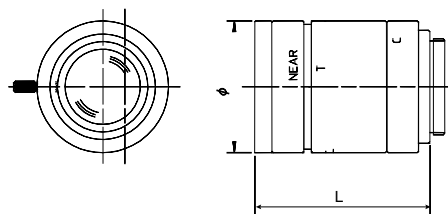
- 1/2" and 1/3" versions available
- CS- and C-mount
- High-quality glass optics
- Metal screw threads
- Auto-iris versions supplied with pre-fitted plug
- ND360 spotted
- 5 years limited warranty

Dimensions



Auto Iris Video Drive

Auto Iris Direct Drive



Manual Iris

Varifocal Lenses

Technical Specifications

	<i>Focal length (mm)</i>	<i>Aperture</i>	<i>Iris operation</i>	<i>Mount type</i>	<i>4-pin connector</i>	<i>Angle of field of view (°) (D x H x V)</i>	<i>Dimensions (Ø x H x L or Ø x L) (mm)</i>	<i>Weight (g)</i>
1/3" LENSES								
KL25V6IS	2.5-6	1.4-Close	Manual	CS	N/A	W:133.3 x 107.6 x 80.9 T:56.8 x 45.6 x 34.2	39.5 x 46.1	83
KL25V6VDS	2.5-6	1.4-360	A.I. DD.	CS	Y	W:133.3 x 107.6 x 80.9 T:56.8 x 45.6 x 34.2	39.5 x 51 x 46.1	90
KL25V6VS4	2.5-6	1.4-360	A.I. Video	CS	Y	W:133.3 x 107.6 x 80.9 T:56.8 x 45.6 x 34.2	39.5 x 54.5 x 46	95
KL35V8IS	3.5-8	1.4-Close	Manual	CS	N/A	W:109.3 x 81.9 x 59.4 T:43.9 x 35.0 x 26.1	35 x 46.5	83
KL35V8DS	3.5-8	1.4-360	A.I. DD.	CS	Y	W:109.3 x 81.9 x 59.4 T:43.9 x 35.0 x 26.1	35 x 46 x 46.5	80
KL35V8VS4	3.5-8	1.4-360	A.I. Video	CS	Y	W:109.3 x 81.9 x 59.4 T:43.9 x 35.0 x 26.1	35 x 46 x 46.5	80
KL55V33IS	5.5-33	1.6-Close	Manual	CS	N/A	W:63.9 x 50.1 x 37.2 T:11.0 x 8.7 x 6.5	42 x 54.5	148.5
KL55V33DS	5.5-33	1.6-360	A.I. DD.	CS	Y	W:63.9 x 50.1 x 37.2 T:11.0 x 8.7 x 6.5	42 x 54.3 x 54.5	144.5
KL55V33VS4	5.5-33	1.6-360	A.I. Video	CS	Y	W:63.9 x 50.1 x 37.2 T:11.0 x 8.7 x 6.5	42 x 54.3 x 54.5	146
1/2" LENSES								
KL06V13IC	6-13	1.8-Close	Manual	C	N/A	W:75.5 x 60.3 x 45.2 T:35.5 x 28.5 x 21.4	42 x 54.4	80
KL06V13VDC	6-13	1.8-360	A.I. DD.	C	Y	W:75.5 x 60.3 x 45.2 T:35.5 x 28.5 x 21.4	39.5 x 51 x 54.4	88
KL06V13VC4	6-13	1.8-360	A.I. Video	C	Y	W:75.5 x 60.3 x 45.2 T:35.5 x 28.5 x 21.4	39.5 x 54.4 x 54	97

Technical specifications for all models:

- **Relative humidity: 95% (non condensing)**
- **Operating temperature: from -10°C to +50°C**
- **Minimum object distance: 0.3 m**
- **5 years limited warranty**

Your local contact is: