

VideoBloX Lite

Video BloX

VideoBloX Lite is a cross-point matrix switch and control system that provides a powerful, cost effective, solution for smaller systems. More than just a video matrix switcher, VideoBloX Lite is an integrated control system for video, CCTV peripheral equipment and alarm processing. It has proven to be easy to install, easy to configure and easy to operate.



VideoBloX Lite

FEATURES:

- Configured systems of up to 96 video inputs and 8 video outputs
- Stainless steel Fabrication provides excellent grounding and heat dissipation
- High density, compact design
- Embedded controller with high-speed processor and non-volatile memory
- Powerful diagnostic and monitoring tools
- Flexible, powerful sequence engine for custom applications
- User-friendly operation with user-defined keys for quick group and scene review
- Integrated control of ADEMCO Video and other manufacturers' PTZ/Domes/VCR/MUX/DVR
- RS232 auxiliary control port, allows third-party systems to access and control the features of VideoBloX

ADEMCO Video Systems Support Center

Toll-free 800-796-CCTV
Direct 972-353-6500
Fax 972-353-6670
www.ademcovieo.com

1305 Waters Ridge Drive
Lewisville, Texas 75057

Copyright ©2003 Honeywell International Inc.

ADEMCO
VIDEO SYSTEMS
A Honeywell Company

Modules



VideoBloX Lite CPU Module - AVBLITECPU

The central processing unit contains the operating system and database in non-volatile memory that can retain critical data for up to one month without power. It is an embedded controller designed specifically for the purpose of video switching in a security environment. The CPU module contains many features to ensure its reliability – including a watchdog timer and supply voltage monitoring.

Rear connectors on the unit provide an RS232 connection to the configuration PC (only required for system configuration and editing), an RS232 connection for auxiliary control (e.g. an access control system), an RS422 connection for keyboards and protocol interface translators, a removable terminal block for the connection of 8 alarm inputs and 2 control outputs and an I2C (a communications protocol) connection for alarm and control expansion.

The CPU module also includes 8 titled video outputs, with BNC connectors on the rear of the chassis. The titling provides up to 24 characters that can be positioned in any one of the 12 horizontal lines. Time and date may also be displayed and are kept accurate by a real-time, battery-backed clock.

Installed in the matrix chassis, the CPU module occupies only a 1/2U slot, making it smaller and more efficient than PC-based switchers.

VideoBloX Configuration Software (VideoCFG)

The configuration software is a 32-bit application that is compatible with Windows 95/98/NT/2000, and provides easy-to-use programming for system configuration. The software is installed in a PC that is only required for system configuration and editing. It does not have to be permanently connected to the VideoBloX Lite CPU.

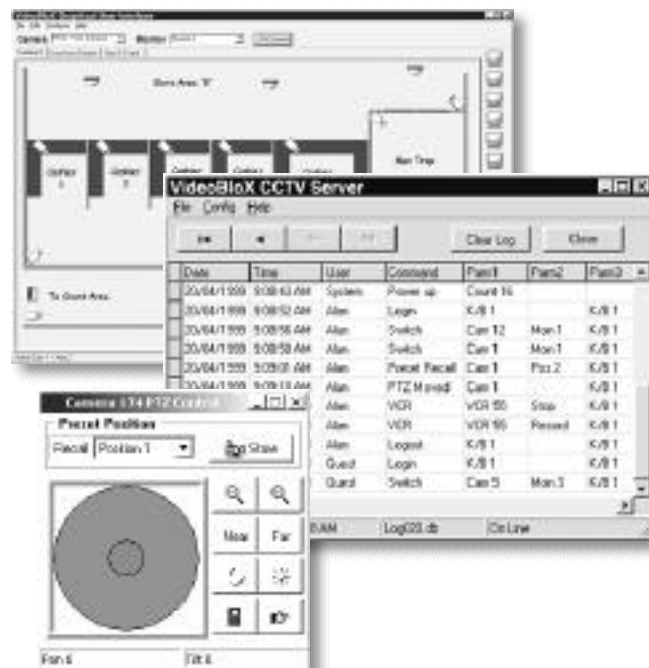
The system utilizes a 32-bit, ODBC-compliant, Borland Paradox 7.0 Database Manager. Data is organized into tabbed folders, each representing a logical function. Information is entered into named fields or selected from lists of parameters. Interactive “help” is available to assist the user. For the more experienced operator, data can be edited directly in the database tables.



Video Input Module

The video input module provides capacity for up to 16 video inputs being switched to any of the 8 video outputs on the CPU module. Front panel gain adjustment enables fine-tuning of the image and BNC connectors are provided on the rear termination panel.

Installed in the matrix chassis, the video input module occupies only a 1/2U slot, making it smaller and more efficient than PC-based switchers. An optional module provides looping connectors, however the module then increases to a 1U height.



Protocol Interface Translator - PIT

The PIT is the versatile device that provides the capability for interface to PTZs, High speed domes, VCRs, multiplexers and DVRs. The PIT provides control for all ADEMCO Video products, and also converts VideoBloX protocol to that of other manufacturers – enabling retrofit installation to third party equipment. Simple dipswitch configuration selects a variety of protocols.

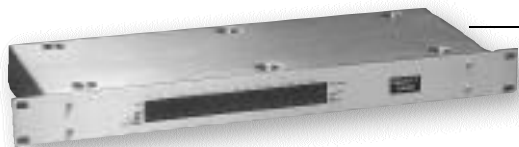
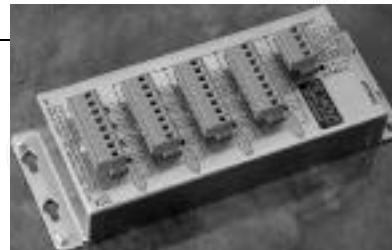


Programmable Control Keyboards - PCK

The programmable control keyboard provides the operator with full control of VideoBloX Lite. Basic functions such as switching video inputs to video outputs, controlling high speed domes and controlling VCRs and/or DVRs, are all easily performed using positive action keys. User-defined keys provide the capability of performing enhanced functions and selecting groups and scenes for “Quick View” of cameras. An enhanced keyboard with a “Twist-to-Zoom” is available.

Alarm Input/Output Expansion Modules

Alarm Inputs are utilized to activate sequence actions in response to alarm conditions. The standard 8 alarm inputs and 2 control outputs can be expanded using the expander modules. The expansion modules have either a 16 Input or a 16 output capability and up to 5 of the modules may be connected to the I2C port on the CPU module. This provides a total of 80 additional alarm inputs or control outputs or any combination of the two.



Data Port Expander

There is a single RS422 connector on the CPU Module. The Data Port Expander may be connected to this to provide additional ports for the easy connection of programmable control keyboards and protocol interface translators.

Ordering Information

VideoBloX Lite Configured Systems

Configured system includes 2U or 4U chassis, VideoBloX Lite CPU with 8 titled outputs, VideoBloX configuration software with RS232 cable and appropriate number of AVB16M8 video input modules

Chassis size - 2U (3 modules) 19" Rack Mount: Dimensions 3.5" high x 9.65" deep

AVBLT2U16X8	16 x 8 Matrix in 2U chassis, requires (not included) 16.5v at 40 VA transformer
AVBLT2U32X8	32 x 8 Matrix in 2U chassis, requires (not included) 16.5v at 40 VA transformer
AVBLT2U16X8L	16 x 8 Looping Matrix in 2U chassis, requires (not included) 16.5v at 40 VA transformer

Chassis size - 4U (7 modules) 19" Rack Mount: Dimensions 7.0" high x 9.65" deep

AVBLT4U16X8	16 x 8 Matrix in 4U chassis, includes power supply module
AVBLT4U32X8	32 x 8 Matrix in 4U chassis, includes power supply module
AVBLT4U48X8	48 x 8 Matrix in 4U chassis, includes power supply module
AVBLT4U64X8	64 x 8 Matrix in 4U chassis, includes power supply module
AVBLT4U80X8	80 x 8 Matrix in 4U chassis, includes power supply module
AVBLT4U96X8	96 x 8 Matrix in 4U chassis, includes power supply module
AVBLT4U16X8L	16 x 8 Looping Matrix in 4U chassis, includes power supply module
AVBLT4U32X8L	32 x 8 Looping Matrix in 4U chassis, includes power supply module
AVBLT4U48X8L	48 x 8 Looping Matrix in 4U chassis, includes power supply module

VideoBloX Lite Peripheral Equipment

Select one or more (maximum 8) keyboards - requires RS422 cable, selected below

AVBPCK	Programmable control keyboard with 16-character, high brightness LED display, function keys for PTZ/high speed dome, VCR, multiplexer or DVR control and four user-defined keys.
AVBPCKZ	As above except with "twist-to-zoom" joystick

Select one or more PITs (if required) - requires RS422 cable, selected below

AVBPIT422	Converts RS422 VideoBloX protocol to RS422 output protocol for control of other equipment such as high speed domes.
AVBPIT232	Converts RS422 VideoBloX protocol to RS232 output protocol for control of other equipment such as VCRs, multiplexers and DVRs.
AVBPIT232I	Provides an extension of the AVBPIT232, offering integral optical isolation on the RS232 output.

Select a DPE (if required) to expand number of RS422 ports - requires RS422 cable, selected below

AVB422FT8	Provides 8 RS422 ports
AVB422FT16	Provides 16 RS422 ports

Select Alarm Input/Output Expander Modules (if required) - includes interconnect cable.

AVBI2C16I	Provides 16 potential free inputs, simple, normally open/normally closed devices. A status LED is provided for each input.
AVBI2CO	Provides 16 FET outputs—allowing the switching of low-power devices (LEDs etc.) Addition of an external 12 VDC power supply allows switching of heavier loads.
AVBI2CKB	Provides 16 keys, each with an LED. The keys may be manually operated to activate a sequence for remote control of lighting, electrically controlled doors, or other complex functions.

VideoBloX Lite Cables

Female-to-female connections are used for PC to VideoBloX CPU RS232 connections. For example, configuration PC to VideoBloX CPU (RS232 slave port) or third party PC to AUX Port.

AVBD9FD9F1	9-pin serial cable with female ends, straight through (pin-to-pin) connection - 1'
AVBD9FD9F6	9-pin serial cable with female ends, straight through (pin-to-pin) connection - 6'
AVBD9FD9F15	9-pin serial cable with female ends, straight through (pin-to-pin) connection - 15'

Male-to-male connections are used to connect RS422 serial devices (keyboards and/or PITs) to the VideoBloX CPU Master Port or to Data Port Expanders.

AVBD9MD9M1	9-pin serial cable with male ends, straight through (pin-to-pin) connection - 1'
AVBD9MDMF6	9-pin serial cable with male ends, straight through (pin-to-pin) connection - 6'
AVBD9MD9M15	9-pin serial cable with male ends, straight through (pin-to-pin) connection - 15'