

# Fusion DVR Series

Technology In Its Most Connected Form



## Features:

- Capture rates up to 480 IPS
- Live viewing up to 480 IPS
- Multiplexed or Spot Output
- Direct POS Interface (TVS compatible)
- Remote Notification
- Display Maps of Facilities
- Smart, Preview and Index Search
- Supports simultaneous remote connections
- Records resolution up to 720x480
- Link events to control outputs
- Up to 1 Terabyte of onboard storage
- Up to 4 channels of audio
- Remote access through PSTN, LAN/WAN DSL and ISDN

The Fusion DVR Series by Honeywell Video Systems offers the latest in digital technology. Models range from an eight-channel unit, 120 GB HDD to a thirty-two-channel unit with 1 terabyte of storage.

Fusion's ability to select resolutions up to 720x480 and capture up to 480 images per second, allow critical information to be processed in an accurate and efficient manner.

The Fusion Series offers intelligent recording. Users can customize recording schedules based on their security and surveillance needs. The flexible set-up parameters allow users to record continuously or record only specified events. Targeted recording can be implemented by defining specific time periods and/or pre-and-post alarm recording by individual cameras.

In addition, Fusion allows for instant access to information through its advanced search capabilities and remote access. Fusion's advanced search and motion-based object search provide users the ability to access critical information in seconds. Remote viewing capabilities also provide instant access to critical information. Users have the ability to view images via wireless LAN and Internet using compatible PDA products.

The Fusion Series is compatible with CYA-Retail Security Software by Honeywell Video Systems. Users can search recorded POS transactions combined with actual transaction video. In addition to POS interface, Fusion also interfaces with ATM machines. Captured video, along with the ATM

transaction details are recorded.

Both POS and ATM interfaces have the ability to view recorded details locally and remote.

Changes in security environments are simplified by the use of Fusion. All Fusion DVRs use the same software platform, offering compatibility across the entire Fusion line. Never has a DVR Series been so versatile and comprehensive, as the Fusion DVR Series.

# Fusion DVR Series

## Features & Benefits:

### Easy Installation and Operation

The Fusion Series offers an exceptionally simple, easy to use interface. A few mouse commands can quickly take users through set-up.

### High Resolution and Image Capture Rates

With the ability to record up to 720 x 480 and capture images up to 480 IPS, Fusion processes information in an accurate and expedient manner.

### Intelligent Recording

Easy customization allows users to optimize the DVR for their specific needs. The flexible set-up parameters give the ability to record continuously or only for specified events. Fusion also enables users to record based on specific motion zones and target specific needs by programming pre-and-post alarms on individual cameras.

### Upgradeable Platform

Fusion was built to respond and adapt to the constant changes in security environments. Keeping up with the latest developments or upgrades has never been easier.

### Simultaneous Connections to Multiple Sites

Versatility is the key to the multi-site capability of the Fusion's Remote Management Software. Multiple users have the ability to connect to a single unit or connect to multiple sites simultaneously.

### Bandwidth Throttling

The Fusion Series has the capability to regulate the data rate of each remote video unit to ensure that images and system messages are delivered quickly within the capabilities of the network's available bandwidth.

### Instant Access to Information

Fusion has advanced index search and motion-based object search functionality that allows users to retrieve critical information in seconds. Saving hours of valuable time and resources.

### Preview Search

The Preview Search gives a quick overview of a 24-hour period, which can be narrowed down to ten-minute increments or one-minute increments based on reviewing needs.

### Remote Accessibility

Users can view remotely through a standard Web browser or full control through client or management software. Fusion provides the ability to view live video, retrieve video, control pan-and-tilts and more.

### Flexible Connectivity

Fusion connects to PSTN, ISDN, LAN/WAN, and cable modems giving the flexibility needed for multiple installations.

### Transaction Management Security Software

Fusion includes the option to integrate with existing POS Systems, or integrate with Honeywell Video Systems CYA Retail Software by TVS.



Fusion Remote View Software

# Fusion DVR Series

## Features:

Resolution	Hours	Days	Options
360x240			
120GB	1376.49	57.4	TOTAL IPS <b>16</b>
250GB	2882.40	121.1	
500GB	5823.62	242.7	
750GB	8764.84	365.2	
1TB	11706.06	487.8	
720x240			MOTION <b>35</b>
120GB	778.59	32.4	QUALITY LEVEL <b>NORMAL</b>
250GB	1630.38	68.5	
500GB	3294.03	137.3	
750GB	4957.69	206.6	
1TB	6621.34	275.9	
720x480			AUDIO <b>2</b>
120GB	391.70	16.3	
250GB	820.23	34.5	
500GB	1657.19	69.0	
750GB	2494.15	103.9	
1TB	3331.12	138.8	

STORAGE CALCULATOR

Sample Storage Calculator Image

**Honeywell**

**MOTION GUIDELINE**  
 20% Low Traffic Areas  
 35% Industry Average  
 50% High Traffic Areas  
 100% Continuous Recording

**CALCULATING TOTAL FPS**  
 Add the Images Per Second (IPS) for all the cameras together.  
 EX. 16 Cameras set to record at 5 IPS each would be a total of 80 IPS.


**60 IPS MODELS**  
 \*640x480 Resolution cannot exceed 30 IPS

**120 IPS MODELS**  
 \*640x480 Resolution cannot exceed 30 IPS  
 \*640x240 Resolution cannot exceed 60 IPS

**240 IPS MODELS**  
 \*720x480 Resolution cannot exceed 60 IPS  
 \*720x240 Resolution cannot exceed 120 IPS

**480 IPS MODELS**  
 \*720x480 Resolution cannot exceed 120 IPS  
 \*720x240 Resolution cannot exceed 240 IPS

**FUSION**



Recording durations can be effected by multiple factors:

1. Higher levels of activity
2. Higher levels of details
3. Image rate
4. Image quality
5. Light levels
6. Noise
7. PTZ cameras

**Motion Guideline**

- 20% Low traffic area
- 35% Industry average
- 50% High traffic
- 100% Continuous recording

Sample Recording Specification Tables

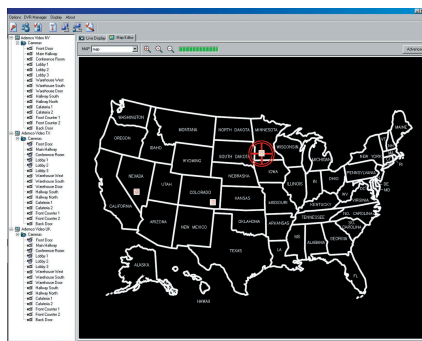
Fusion Series Recording Specifications								
Disk Capacity	120 GB							
Images per Second	1	16	30	60	90	120	240	480
360x240								
Continuous Recording	338	20.9	11	5.4	3.5	2.6	1.2	0.5
35% Motion	967	60.2	32	15.9	10.5	7.8	3.8	1.8
720x480*								
Continuous Recording	93.8	5.6	3.7	1.3	0.8	0.5		
35% Motion	268.4	16.5	8.7	4.2	2.7	2		

Fusion Series Recording Specifications								
Disk Capacity	1TB							
Images per Second	1	16	30	60	90	120	240	480
360x240								
Continuous Recording	2877	178	93.9	45.9	29.9	21.9	9.9	3.9
35% Motion	8223.8	512	272	135	89.3	66.5	32.2	15.1
720x480*								
Continuous Recording	93.8	47.9	24.6	11.3	6.8	4.6		
35% Motion	2282	141	74.1	36	23.3	17		

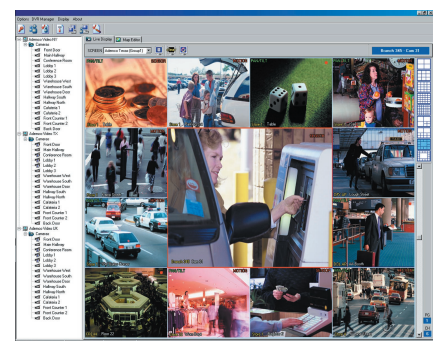
Results listed in days of recording \* Note: Size of image effects max ips.

**Fusion Remote Management Software**

- Monitor multiple sites simultaneously
- View live and /or recorded video
- Control PTZ domes
- Remote alarm monitoring
- Mapping capabilities



Mapping Capabilities



Multi-Site Monitoring

## Fusion DVR Series

### Specifications:

#### Video Recording System

- Video Standard:  
NTSC: 720x480 max.  
PAL: 720x576 max.
- Image Compression: Proprietary
- 2~4 Kbytes per frame (360x240)
- Record/Viewing: Up to 480 ips
- Storage Media Internal: Up to 1TB
- Record Directly to Network Attached Device

#### Video Inputs

- Composite: Up to 32 1v p-p, 75ohm, BNC

#### Video Outputs

- Composite: Controllable analog out, display up to 16 images
- SVGA: 15 pin D-type port for a PC monitor connection

#### Rear Panel Connections\* See chart for actual

- Alarm inputs: Up to 16 dry

- contact, NC/NO programmable
- Control outputs: Up to 16
- Audio Inputs: Up to 4 line inputs – RCA Connector
- Audio Out: 1 line output – RCA Connector
- Network connectivity: 10/100 Mbps Ethernet, RJ45
- Com Ports: 2
- Printer Port: 25 Pin D-Type
- USB Port: Up to 4 USB 2.0
- Keyboard & Mouse: 6 Pin mini-Din
- RS485/422 Port: Plug in connector Control of Ademco Video and Ultrak speed domes along with other major manufactures

#### Recording Archive

- On Board Device: Floppy Drive, CD-RW
- Optional: DVD, SCSI port

#### Mechanical

- Dimensions: 17" W x 20" D x 7"H
- Weight: 38-65 lbs dependent on model

#### Electrical

- Power: 100-240VAC (50Hz/60Hz)

#### Environment

- Operation Temperature: 40° to 104°F (5° to 40°C)

#### Base System

- Includes: AFRVS- Fusion Remote Video Software, Keyboard, Mouse, Rack Mounts, CD-RW and 3.5" Floppy Drive

#### Warranty

- 2 year warranty including drives

Specification Chart	480 - 32 Channel		480 - 16 Channel		240 - 32 Channel		240 - 16 Channel		240 - 8 Channel		120 - 16 Channel		60 - 16 Channel	
	32	16	32	16	32	16	8	16	8	16	16	16	16	16
Cameras	32	16	32	16	32	16	8	16	8	16	16	16	16	16
Looping Outputs		16		16		16		8						
Sensors	16	16	16	16	16	16	8	16	8	16	16	16	16	16
Control Outputs	16	16	16	16	16	16	8	4	4	4	4	4	4	4
Display - Live (L) or Recorded Rate (R)	L	L	L	L	L	L	L	R	R	R	R	R	R	R
Frame Setup - Individual (I) or Global (G)	I	I	I	I	I	I	I	I	I	I	I	I	I	I
Resolution - Individual (I) or Global (G)	I	I	I	I	I	I	I	G	G	G	G	G	G	G
Resolution - 720x480 (720) or 640x480 (640)	720	720	720	720	720	720	720	640	640	640	640	640	640	640
Resolution - 720x240 (720) or 640x240 (640)	720	720	720	720	720	720	720	640	640	640	640	640	640	640
Resolution - 360x240 (360) or 320x240 (320)	360	360	360	360	360	360	360	320	320	320	320	320	320	320
Audio - Line In	4	4	4	4	4	4	4	2	2	2	2	2	2	2
Spot Monitor - Multi-Screen Controllable	M	M	M	M	M	M	M	S	S	S	S	S	S	S
Intensive Record - Selectable (S) or Max (M)	S	S	S	S	S	S	S	M	M	M	M	M	M	M
USB 2.0 Ports	4	4	4	4	4	4	4	2	2	2	2	2	2	2

#### Part Number and Optional Accessories Guides

Use the Part Number Configurator to create a part number based on your needs. Example, AFDVR1624050 Fusion Series 16 Channel, 240 IPS, and 500 GB Hard Drive

Optional Accessories	
<b>AFRVS</b>	Fusion Remote Video Software
<b>AFVMS</b>	Fusion Video Management Software
<b>AFDVRDVDWR</b>	DVD Burner
<b>AFDVRSCSI</b>	SCSI Adaptor
<b>AFDVRUSBM</b>	USB Modem
<b>AFDVRGBNIC</b>	Giga Bit Network Interface Card
<b>AFDVR4VOUT</b>	4 Port Analog Output Card
<b>AFDVRR1</b>	Internal Raid One
<b>AFDVRR5</b>	Internal Raid Five
<b>AFDVRCYASA</b>	Stand Alone CYA Software
<b>AFDVRCYA1NWR</b>	Network Accessible Version of CYA
<b>AFDVRCYACL1</b>	CYA Client Software

AFDVR Product Series		
Inputs	Image Rate	HHD Capacity
<b>32</b> - 32 Channels	<b>480</b> - 480 ips	<b>1T</b> - 1 Terabyte
<b>16</b> - 16 Channels	<b>240</b> - 240 ips	<b>75</b> - 750 GB
<b>8</b> - 8 Channels	<b>120</b> - 120 ips	<b>50</b> - 500 GB
	<b>60</b> - 60 ips	<b>25</b> - 250 GB
		<b>12</b> - 120 GB

- 8 Channel available only at 240 ips
- 16 Channel available only at 60, 120, 240 or 480 ips
- 32 Channel available only at 240 or 480 ips

For remote access of TVS CYA Software, both AFDVR-CYASA and AFDVR-CYA1NWR are needed.

Honeywell Video Systems - <a href="http://www.ademcovieo.com">www.ademcovieo.com</a>			
<b>North America</b> 1.800.796.CCTV	<b>Europe</b> 44.1928.754000	<b>Asia</b> 61.2.8837.9300	<b>Latin America</b> 1.305.805.8188